

998 FLUSHING AVE
BUSHWICK

COMMERCIAL
LEASE



998 FLUSHING AVE
BUSHWICK

JUSTIN LOSH
(347) 388-4649
JUSTIN@COUNTRYNY.COM

OFFICE
250 MOORE ST, #302
BROOKLYN, NY 11206



PROPERTY DETAILS

-  **INQUIRE FOR PRICING**
-  **1945 SF - 4195 SF**
-  **NEGOTIABLE LEASE LENGTH**

CAN BE LEASED AS 1 STORE OR 2

NEWLY RENOVATED

NEW STOREFRONTS, MECHANICALS
AND BATHROOMS

FLOOR TO CEILING FRAMELESS
WINDOWS

HEAVY FOOT TRAFFIC

TWO BLOCKS FROM THE L TRAIN

BASEMENT STORAGE

HIGH CEILINGS

EASILY VENTED FOR COOKING

998 FLUSHING AVE
BUSHWICK

JUSTIN LOSH
(347) 388-4649
JUSTIN@COUNTRYNY.COM

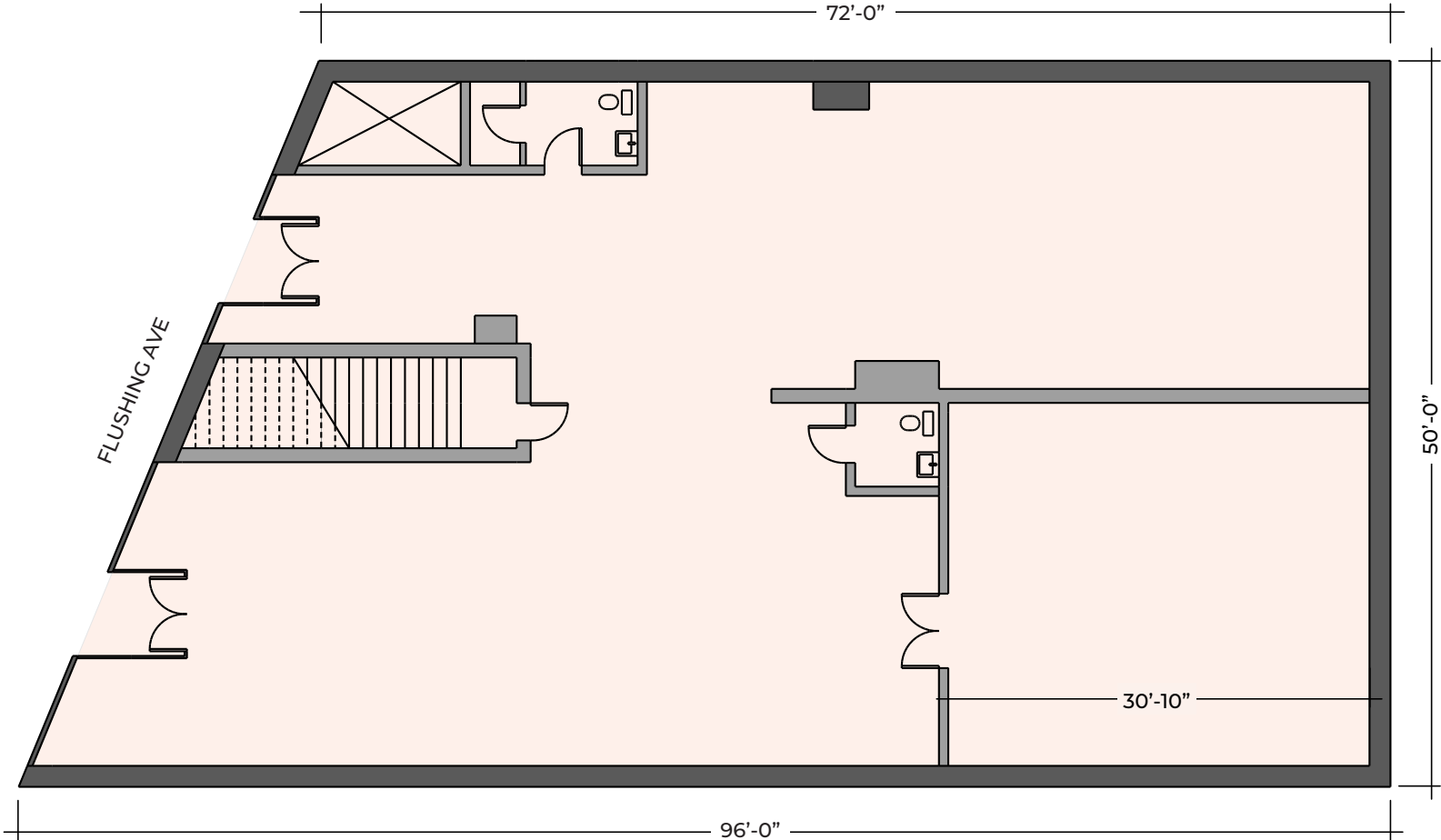
OFFICE
250 MOORE ST, #302
BROOKLYN, NY 11206



998 FLUSHING AVE
BUSHWICK

JUSTIN LOSH
(347) 388-4649
JUSTIN@COUNTRYNY.COM

OFFICE
250 MOORE ST, #302
BROOKLYN, NY 11206

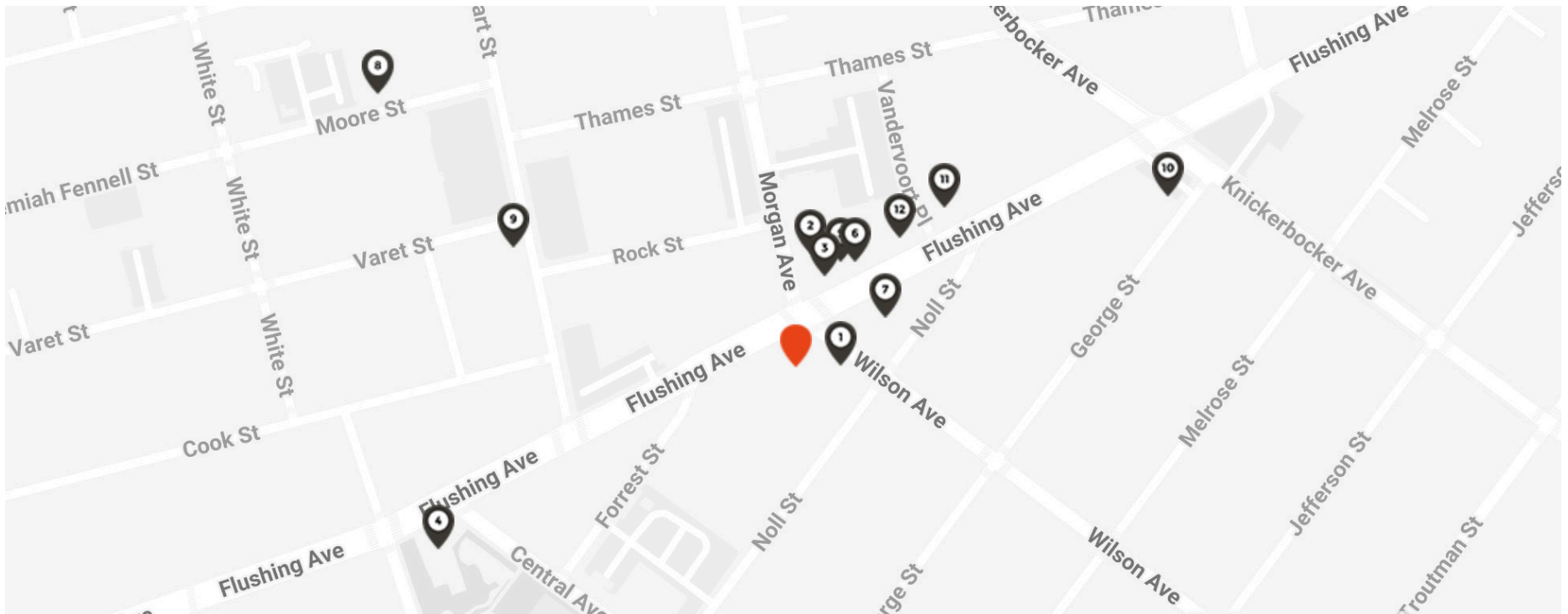


Disclaimer: Please note this floor plan is for marketing purposes and is only to be used as a guide. All efforts have been made to ensure its accuracy at time of print. Approximate measurements listed in this floor plan are reflective of the interior space dimensions only.

998 FLUSHING AVE BUSHWICK

JUSTIN LOSH
(347) 388-4649
JUSTIN@COUNTRYNY.COM

OFFICE
250 MOORE ST, #302
BROOKLYN, NY 11206



NEIGHBORS

- 1 - DAYGLOW
- 2 - SEITAN'S HELPER
- 3 - FOREVER THAI
- 4 - CHIANGMAI THAI DINER
- 5 - YIA YIA'S TAVERNA
- 6 - THE NARROWS
- 7 - TABARÉ BUSHWICK
- 8 - ROBERTA'S PIZZA
- 9 - EYVAL
- 10 - DUNKIN'
- 11 - EL SANTO
- 12 - NORWINDS

DEMOGRAPHICS

(1MI/3MI)
POPULATION - 131,106 / 1,127,406
AVERAGE AGE - 34.4 / 36
AVERAGE HH INCOME -
\$72,718 - \$82,230

TRANSPORT

L TRAIN: MORGAN AVE
AVERAGE DAILY RIDERS
WEEKDAY - 7,769
WEEKEND - 11,465