

**AVISON
YOUNG**

Available for Lease

2355 Skymark Avenue

Mississauga, ON



Get more information

Colin Bell
Principal, Broker
905 283 2335
colin.bell@avisonyoung.com



Platinum member



2355

Skymark Avenue
Mississauga, ON

Property details

SUITE 300

2,840 sf

SUITE 301

3,000 sf

SUITE 302

5,320 sf

3RD FLOOR

11,160 sf

ADDITIONAL RENT

\$15.38 psf (2025 est.)

ASKING NET RATE

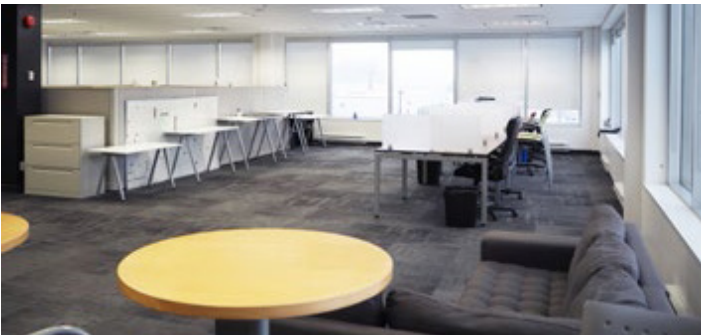
\$17.00 psf

Highlights

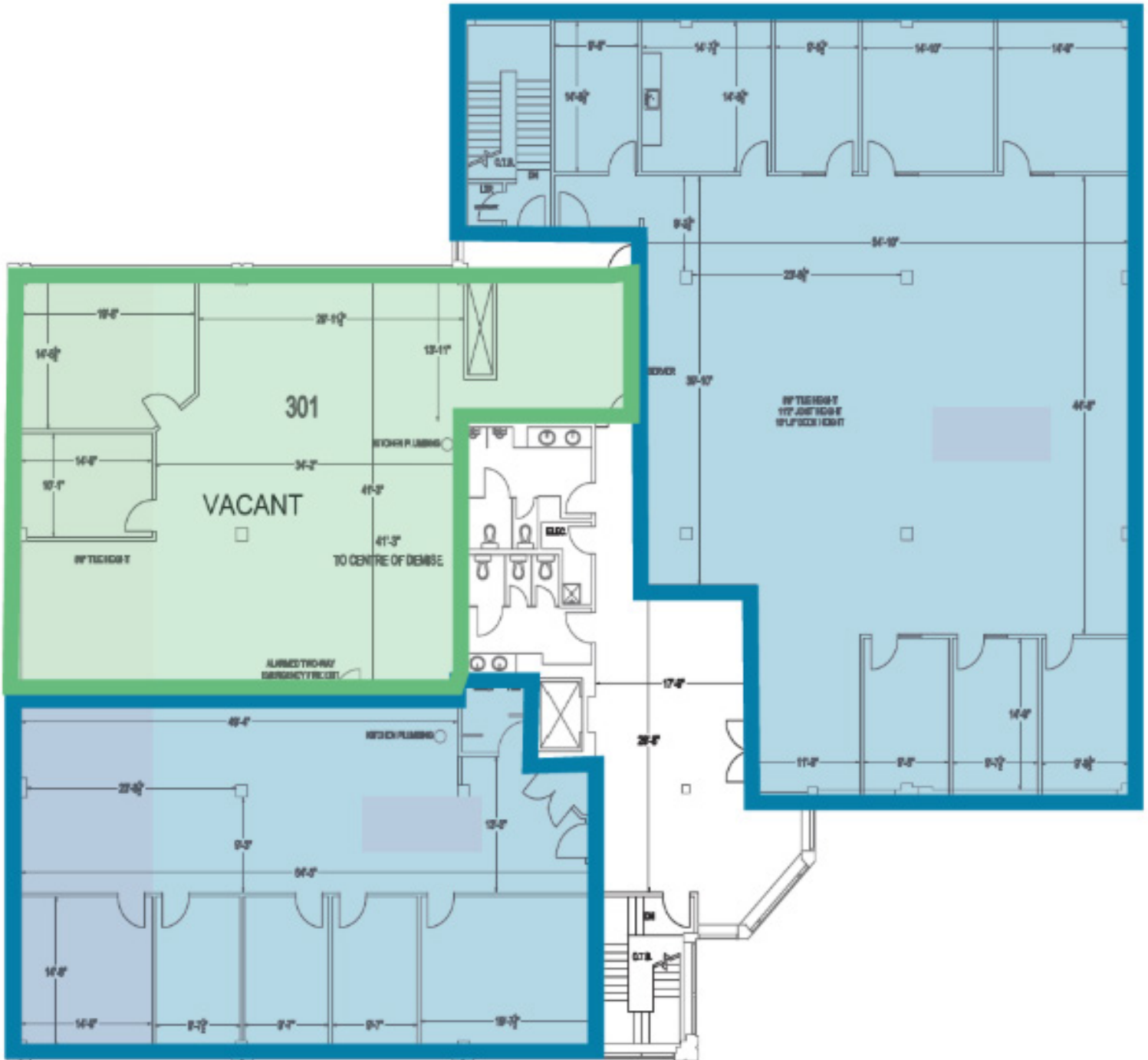
- Beautifully renovated, move in ready space available
- Modern building with many recent upgrades
- Flexible and entrepreneurial landlord
- Located in prominent Airport Corporate Centre with immediate access to amenities, transit, and highways
- Parking ratio is 4: 1,000 sf

Professional Office Space
For Lease

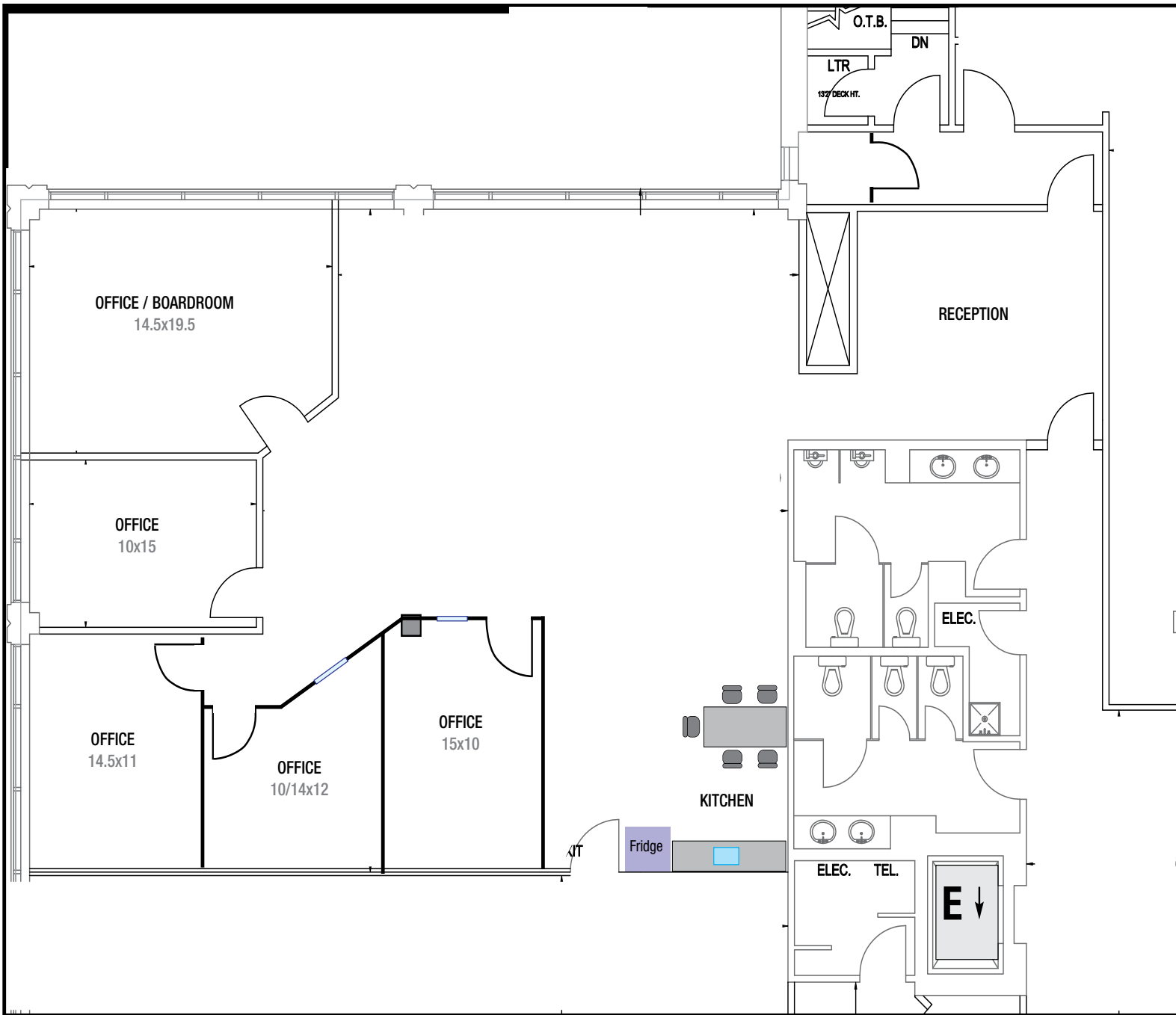
2355 Skymark Avenue
Mississauga, ON



Floorplan - 3rd Floor



Floorplan - Suite 301



Amenities & Transit Map

2355 Skymark Avenue
Mississauga, ON

BUS ROUTES

- 109 Meadowvale Express
- GO Transit Milton Line
- BRT Corridor Stops
- 57 Courtneypark
- 74 Explorer
- 107 Malton Express
- 24 Northwest
- 35 Eglinton
- 39 Britannia



Distances from 2355 Skymark Avenue

5.4 KM to Toronto Airport

3.7 KM to Highway 401

3.5 KM to Highway 427

4.8 KM to Highway 403



**2355
SKYMARK
AVENUE
AVAILABLE**

SKYMARK AVENUE

AVISON YOUNG

FOR LEASE

2355 Skymark Avenue

Mississauga, Ontario

For more information, please contact:

Colin Bell
Principal, Broker
905 283 2335
colin.bell@avisonyoung.com



Platinum member

Avison Young
Commercial Real Estate Services, LP, Brokerage
77 City Centre Dr, Suite 301, Mississauga, ON L5B 1M7
T 905.712.2100 F 905.712.2937 W avisonyoung.ca

© 2025 Avison Young Commercial Real Estate Services, LP, Brokerage. Information contained herein was obtained from sources deemed reliable and, while thought to be correct, have not been verified. Avison Young does not guarantee the accuracy or completeness of the information presented, nor assumes any responsibility or liability for any errors or omissions therein.