



# ±1490-SF TURNKEY SALON OR AVAILABLE AS BRIGHT AND OPEN RETAIL SPACE ON COLLEGE AVE

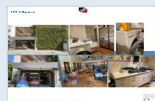


**2887 College Avenue**  
Berkeley CA 94705

**\$3.25 PSF**  
**NNN**

**Matt Gondak**  
510 450 1434  
mgondak@mrecommercial.com  
CA DRE No: 00832220

Suited for many retail uses as well, this bright and clear space is currently configured with eight styling stations, full mirrors, trolley trays, overhead hanging hair dryers, two shampoo stations, waiting area, upstairs shampoo bowl, washer / dryer, electric reclining bed for waxing, facials and massage. Equipment purchase negotiable; to also include the audio system, HVAC and window roller shades. Co-tenants include 7-11 and Elm Laundry, with convenient shared parking. In the vicinity are quality merchants, service establishments, restaurants and cafés. [\[VIEW\]](#)



2887 College Avenue



All information herein is offered in good faith and deemed accurate but not guaranteed.

