

34-B MAUCHLY

SUITE 200, IRVINE, 92618



FOR LEASE | 3,000 SF Office Suite in the Heart of Irvine Spectrum
Asking Rate: \$1.99/Gross

NAI Capital
COMMERCIAL REAL ESTATE SERVICES, WORLDWIDE

PROPERTY SUMMARY



34-B MAUCHLY

SUITE 200, IRVINE, 92618

For more information:

John Manion

Executive Vice President

jmanion@naicapital.com

949.207.6424

CA DRE License #01247695

FOR LEASE

3,000 SF Office Suite in the Heart of Irvine Spectrum

Prime corner office suite featuring four private offices, a conference room, and a collaborative layout ideal for team interaction.

The space includes private restrooms, a full kitchen, and abundant natural light throughout. Conveniently located in the Irvine Spectrum with easy access to the 55 and 405 freeways and ample free surface parking. Perfect for professional users seeking a centrally located and functional workspace in a premier Irvine location.



3,000 SF Office Suite



Corner Unit



Full Kitchen



Collaborative Layout



Conference Room



Private Restrooms



Four Private Offices



Centrally Located w/ Easy Access to 55 & 405 freeways

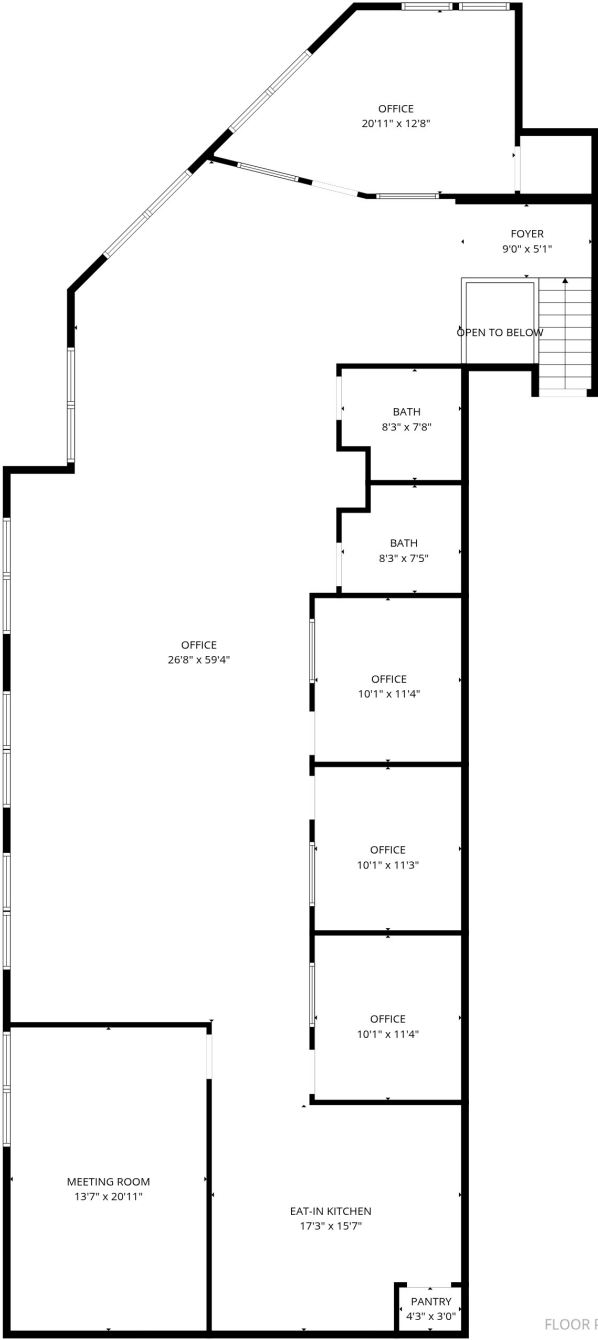


Free Surface Parking

PROPERTY PHOTOS



FLOOR PLAN



FLOOR PLAN CREATED BY CUBICASA APP. MEASUREMENTS DEEMED HIGHLY RELIABLE BUT NOT GUARANTEED.

AERIAL MAP



For more information:
John Manion
Executive Vice President
jmanion@naicapital.com
949.207.6424
Cal DRE License #01247695

34-B MAUCHLY

SUITE 200, IRVINE, 92618

FOR LEASE

3,000 SF Office Suite in the Heart of Irvine Spectrum
Asking Rate: \$1.99/Gross

For more information, please contact:

John Manion

Executive Vice President
jmanion@naicapital.com | 949.207.6424
CA DRE License #01247695