

625 MARKET

The Metropolis Trust Building

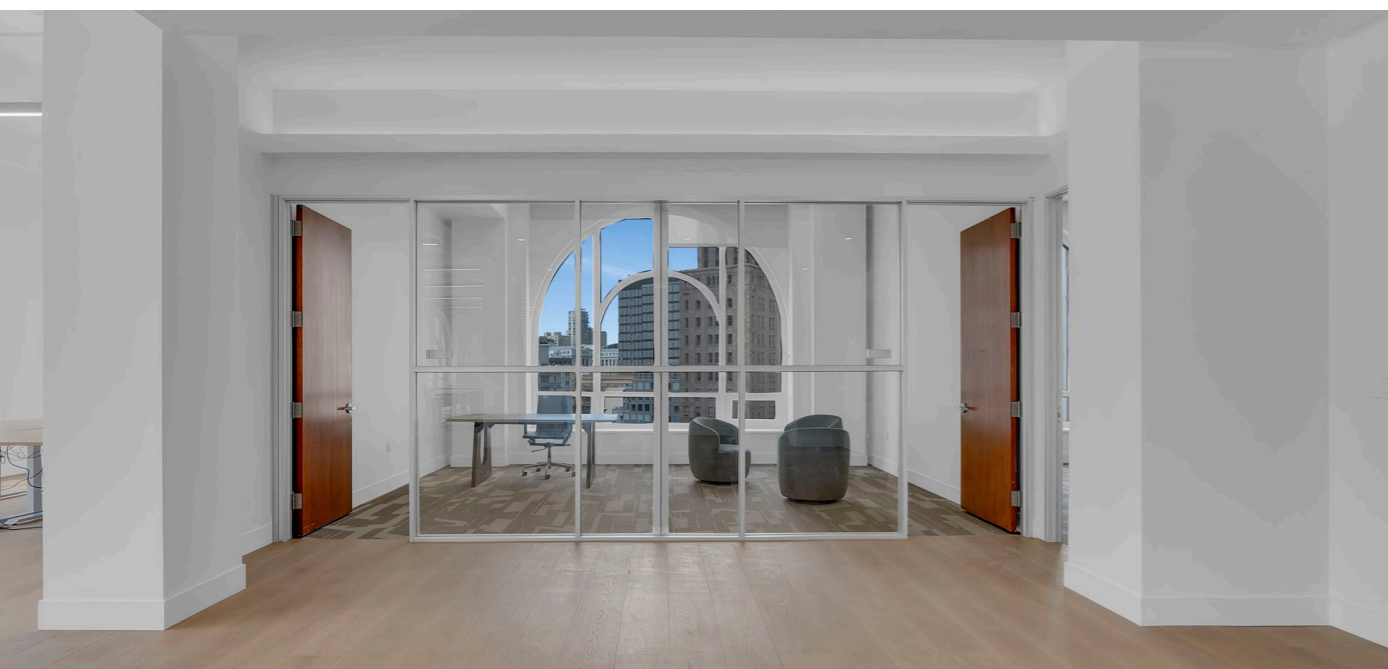
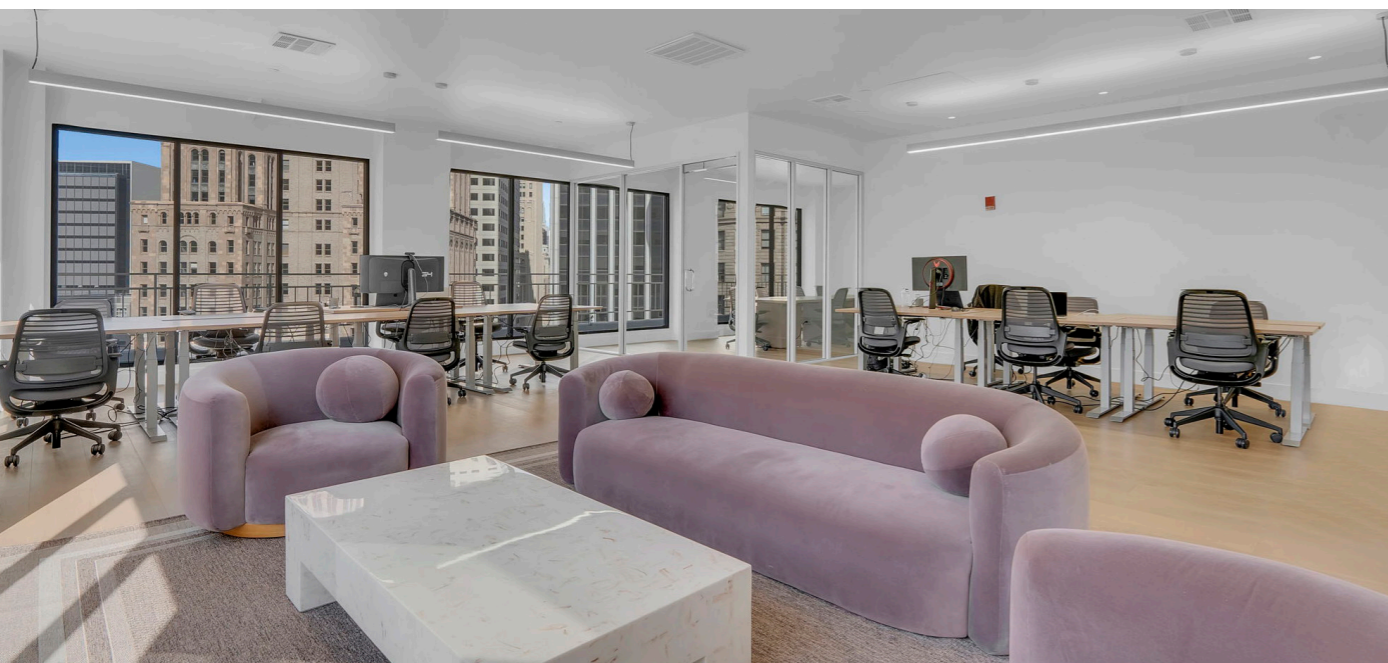
 **CALCO**
COMMERCIAL, INC.

WHERE HISTORIC
CRAFTSMANSHIP
MEETS MODERN
WORKSPACE

TREVOR GUDIM | trevor@calco-sf.com | 858.922.2632 | DRE #01979980

LINDSAY CUTLER | lindsay@calco-sf.com | 714.322.9194 | DRE #02198286

BOUTIQUE OFFICE BUILDING WITH MODERN TENANT AMENITIES



BIKE ROOM



LOCKERS



SHOWER ROOM



LACTATION ROOM



TENANT CLUB HOUSE

Presentation Area w/ Installed AV Equipment, Pool Table, Catering Kitchen, Wine Storage etc.

MULTIPLE FULL-FLOOR OFFICE SUITES

**625
MARKET**

The Metropolis Trust Building

Suites Available Now

PENTHOUSE | 1,852 SQ. FT.
\$100 / SQ. FT. / YEAR, IG

14TH FLOOR | 5,138 SQ. FT.
MID \$80'S / SQ. FT. / YEAR, IG

12TH FLOOR | 5,164 SQ. FT.
\$60 / SQ. FT. / YEAR, IG

10TH FLOOR | 5,116 SQ. FT.
HIGH \$70'S / SQ. FT. / YEAR, IG

9TH FLOOR |
SUITE 900 2,698 SQ. FT.
SUITE 910 2,408 SQ. FT.
HIGH \$70'S / SQ. FT. / YEAR, IG

8TH FLOOR | 3,848 SQ. FT.
HIGH \$70'S / SQ. FT. / YEAR, IG

Suites Available Now

7TH FLOOR |
SUITE 700 2,709 SQ. FT.
SUITE 710 2,413 SQ. FT.
HIGH \$70'S / SQ. FT. / YEAR, IG

5TH FLOOR |
SUITE 500 2,718 SQ. FT.
SUITE 510 2,458 SQ. FT.
\$70 / SQ. FT. / YEAR, IG

2ND FLOOR | 4,838 SQ. FT.
\$80'S / SQ. FT. / YEAR, IG

Suites Coming Soon

11TH FLOOR | 5,143 SQ. FT.
HIGH \$70'S / SQ. FT. / YEAR, IG

6TH FLOOR | 5,134 SQ. FT.
MID \$70'S / SQ. FT. / YEAR, IG

PENTHOUSE | 1,852 SQ. FT.

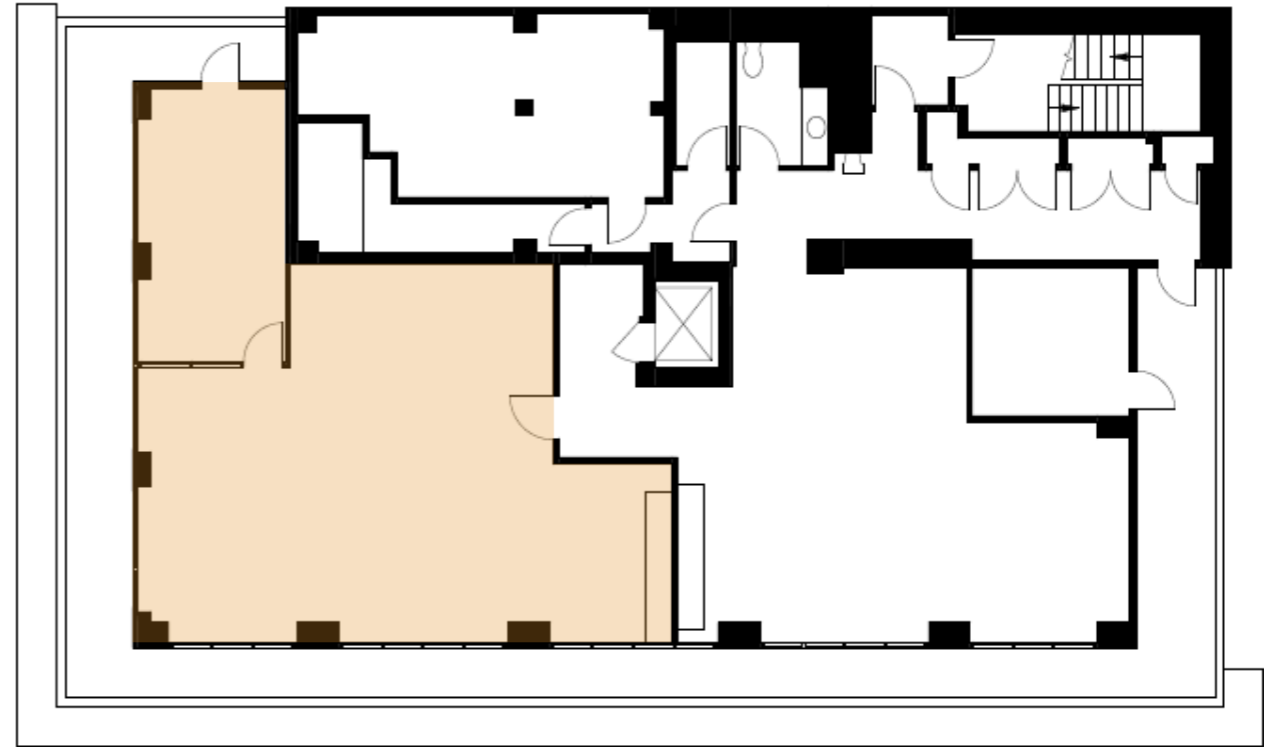
JUST LEASED

625
MARKET

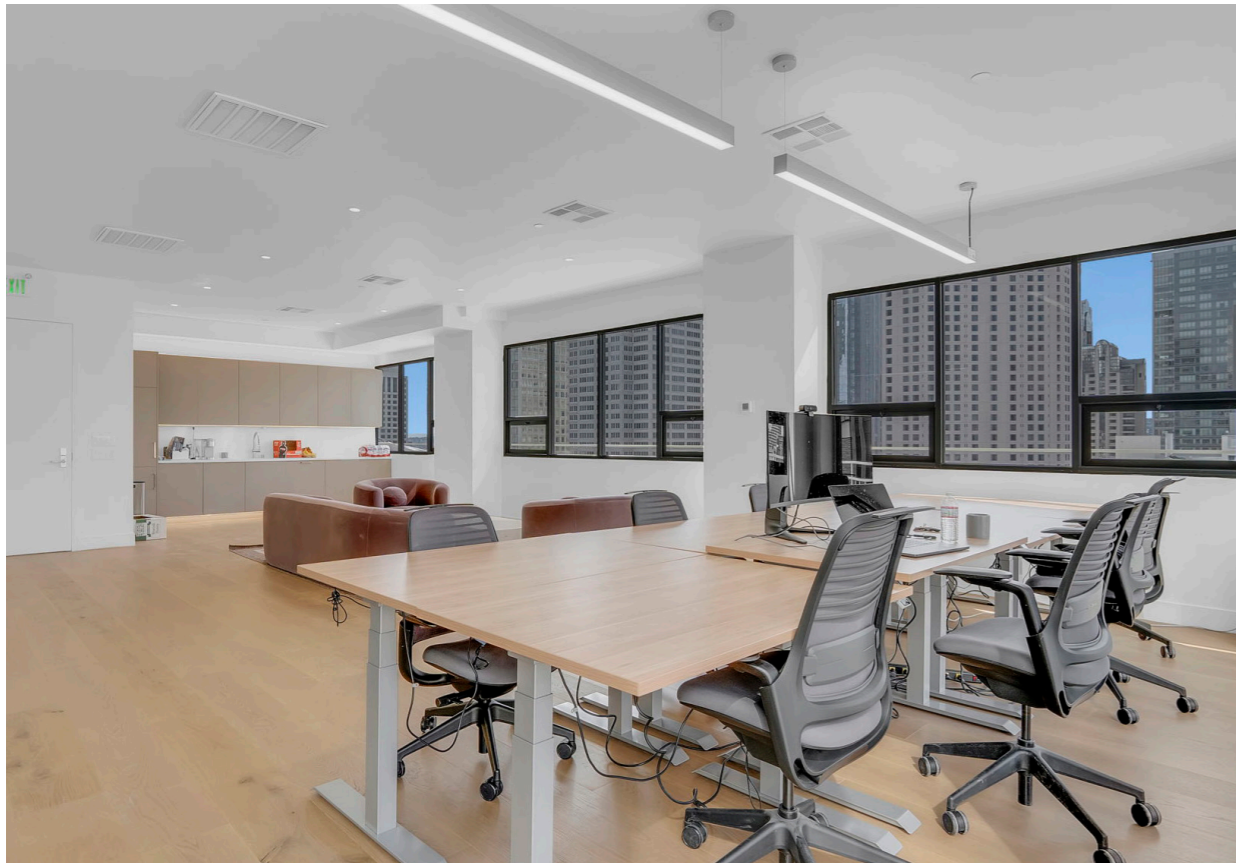
The Metropolis Trust Building

Completely Renovated Penthouse

- | Sweeping Views of the Palace Hotel, Union Square, Twin Peaks and More
- | Fully Furnished with Fourteen (14) Workstations
- | Operable Windows
- | One (1) Glass Conference Room
- | Wrap Around Private Roof Deck
- | Brand New Kitchenette
- | New Hardwood Throughout
- | Fully Renovated Marble Bathroom
- | Full HVAC



NEW MONTGOMERY ST



14TH FLOOR | 5,138 SQ. FT.

JUST LEASED

**625
MARKET**

The Metropolis Trust Building

Completely Renovated Full Floor Creative Office

- | Elevator Access Directly Into Suite
- | Floor-to-Ceiling Arched Window Line, Operable Windows
- | Fully Furnished with Forty-three (43) Workstations
- | Three (3) Conference Rooms
- | One (1) Boardroom
- | Built-in Phone Booths
- | Brand New Kitchenette
- | New Hardwood Throughout
- | Two (2) Renovated Marble Bathrooms
- | Full HVAC



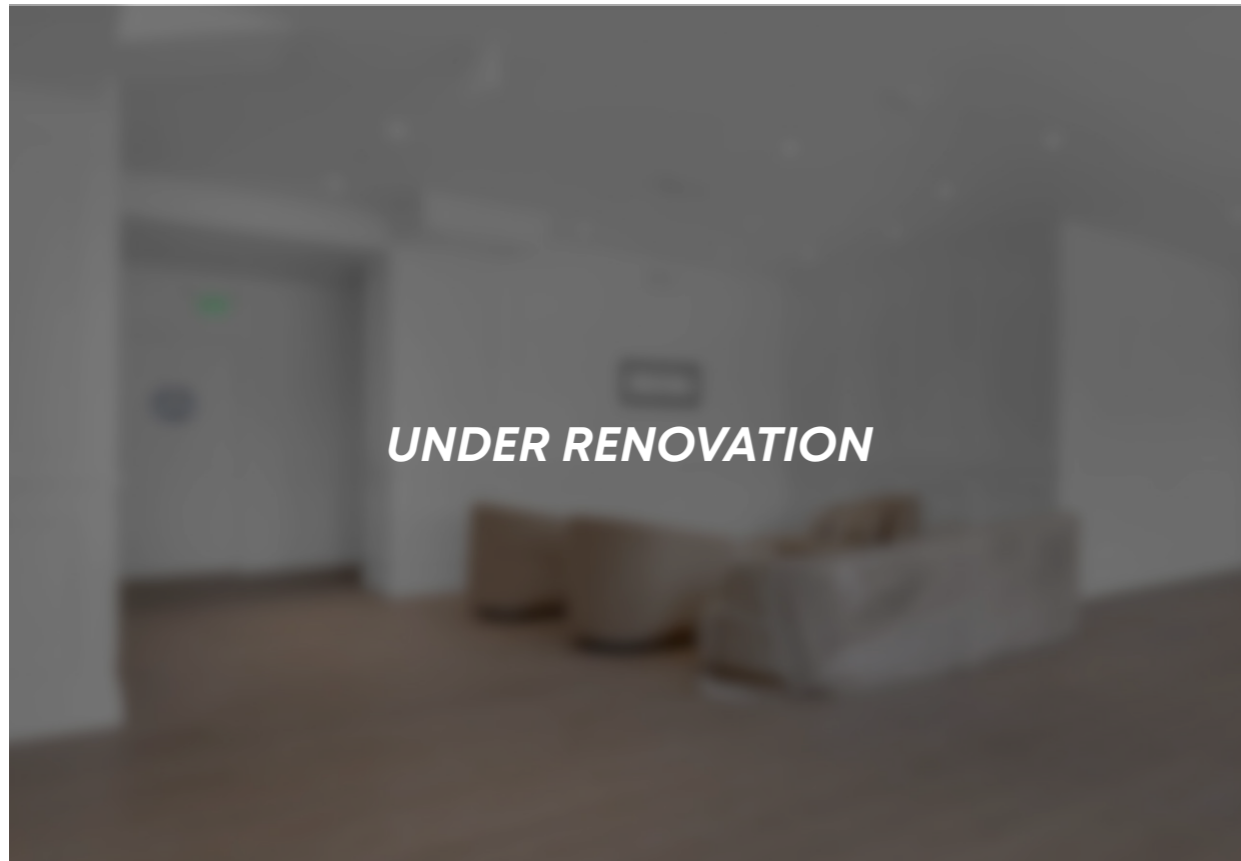
12TH FLOOR | 5,164 SQ. FT.

**625
MARKET**

The Metropolis Trust Building

Professional Services Build Out

- | Elevator Access Directly Into Suite
- | Unobstructed Window Lines with City Views
- | Ample Natural Light Throughout, Operable Windows
- | Ten (10) Conference Rooms / Private Offices
- | One (1) Board Room
- | Full HVAC



11TH FLOOR | 5,143 SQ. FT.

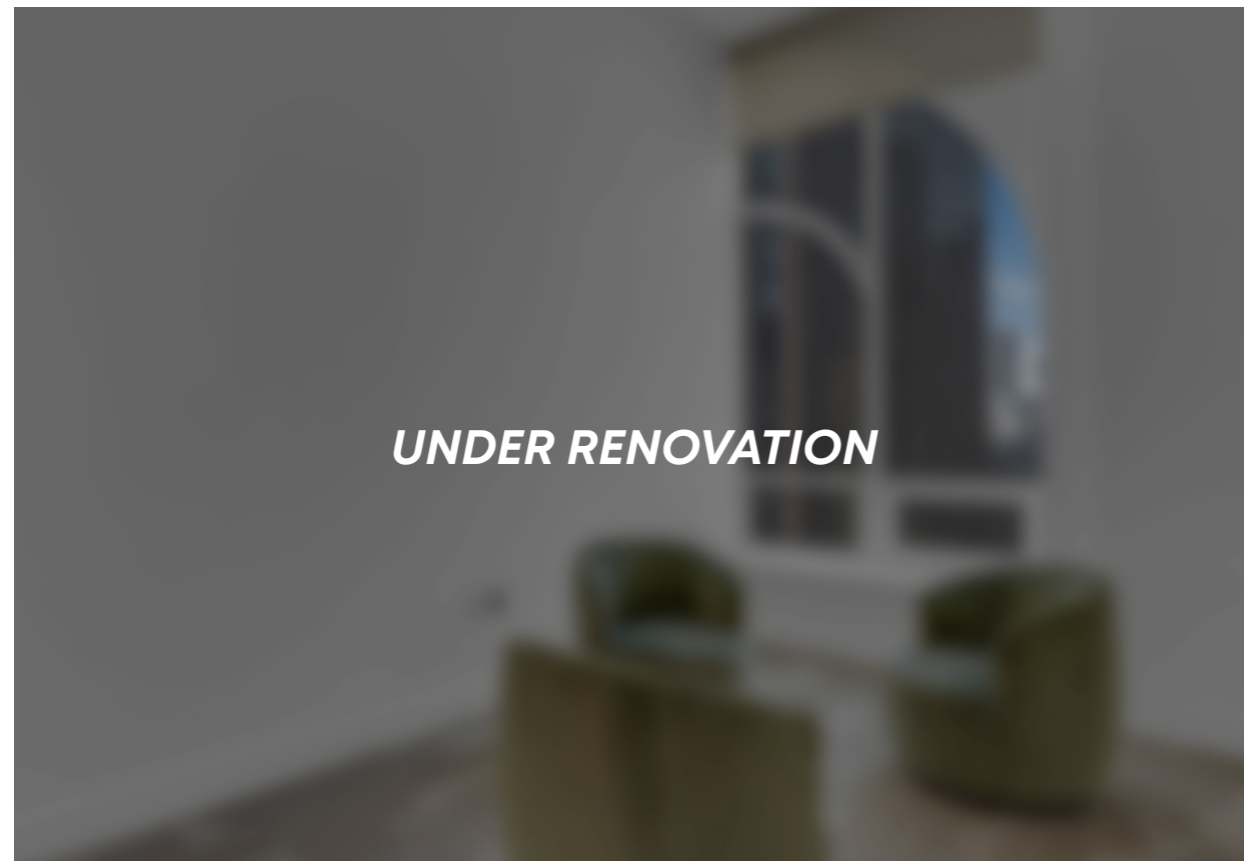
COMING SOON

625
MARKET

The Metropolis Trust Building

Completely Renovated Full Floor Creative Office

- | Elevator Access Directly Into Suite
- | Unobstructed Window Lines with City Views
- | Ample Natural Light Throughout, Operable Windows
- | Fully Furnished with Thirty (30) Workstations
- | Two (2) Conference Rooms
- | Two (2) Private Offices
- | Built-in Phone Booths
- | Brand New Kitchenette
- | Two (2) Renovated Marble Bathrooms
- | Full HVAC



10TH FLOOR | 5,116 SQ. FT.

**625
MARKET**

The Metropolis Trust Building

2nd Generation Creative Suite

- | Elevator Access Directly Into Suite
- | Unobstructed Window Lines with City Views
- | Ample Natural Light Throughout, Operable Windows
- | Partially Furnished
- | Four (4) Conference Rooms
- | One (1) Board Room
- | Two (2) Renovated Marble Bathrooms
- | Full HVAC



UNDER RENOVATION

UNDER RENOVATION

9TH FLOOR | SUITE 900 2,698 SQ. FT. & SUITE 910 2,408 SQ. FT.

**625
MARKET**

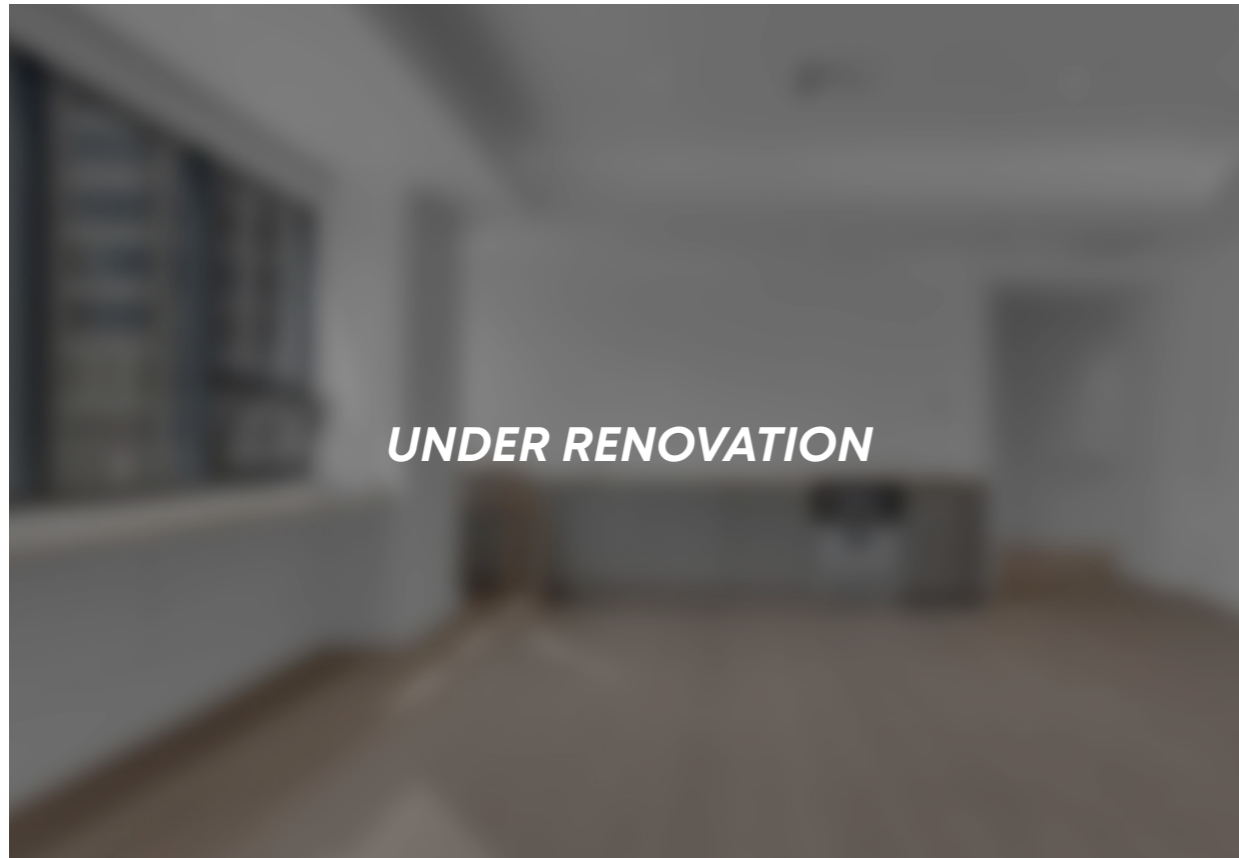
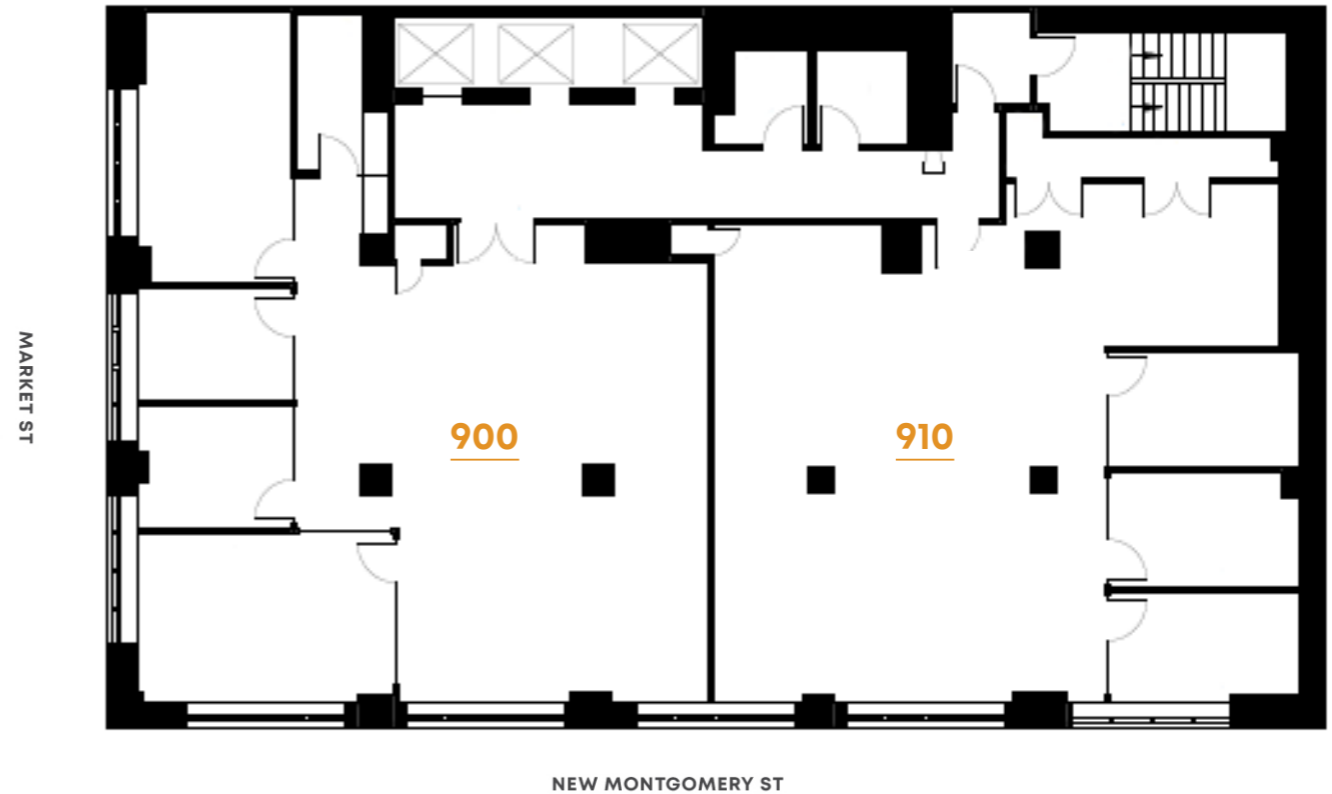
The Metropolis Trust Building

Suite 900

- | Four (4) Conference Rooms
- | Fully Furnished with Ten (10) Workstations
- | One (1) Phone Booth
- | Two (2) Sides of Floor to Ceiling Operable Windows
- | Abundant Natural Light Throughout
- | Brand New Kitchenette
- | New Hardwood Throughout
- | Full HVAC

Suite 910

- | Three (3) Conference Rooms
- | Fully Furnished with Ten-Fifteen (10-15) Workstations
- | Large Window Line with Operable Windows
- | Brand New Kitchenette
- | New Hardwood Throughout
- | Full HVAC



8TH FLOOR | 3,848 SQ. FT.

**625
MARKET**

The Metropolis Trust Building

Completely Renovated Full Floor Creative Office

- | Unobstructed Window Lines with City Views
- | Ample Natural Light Throughout, Operable Windows
- | Partially Furnished with Thirty-six (36) Workstations
- | Built-in Phone Booths
- | Brand New Kitchenette
- | Full HVAC



7TH FLOOR | SUITE 700 2,709 SQ. FT. & SUITE 700 2,413 SQ. FT.

**625
MARKET**

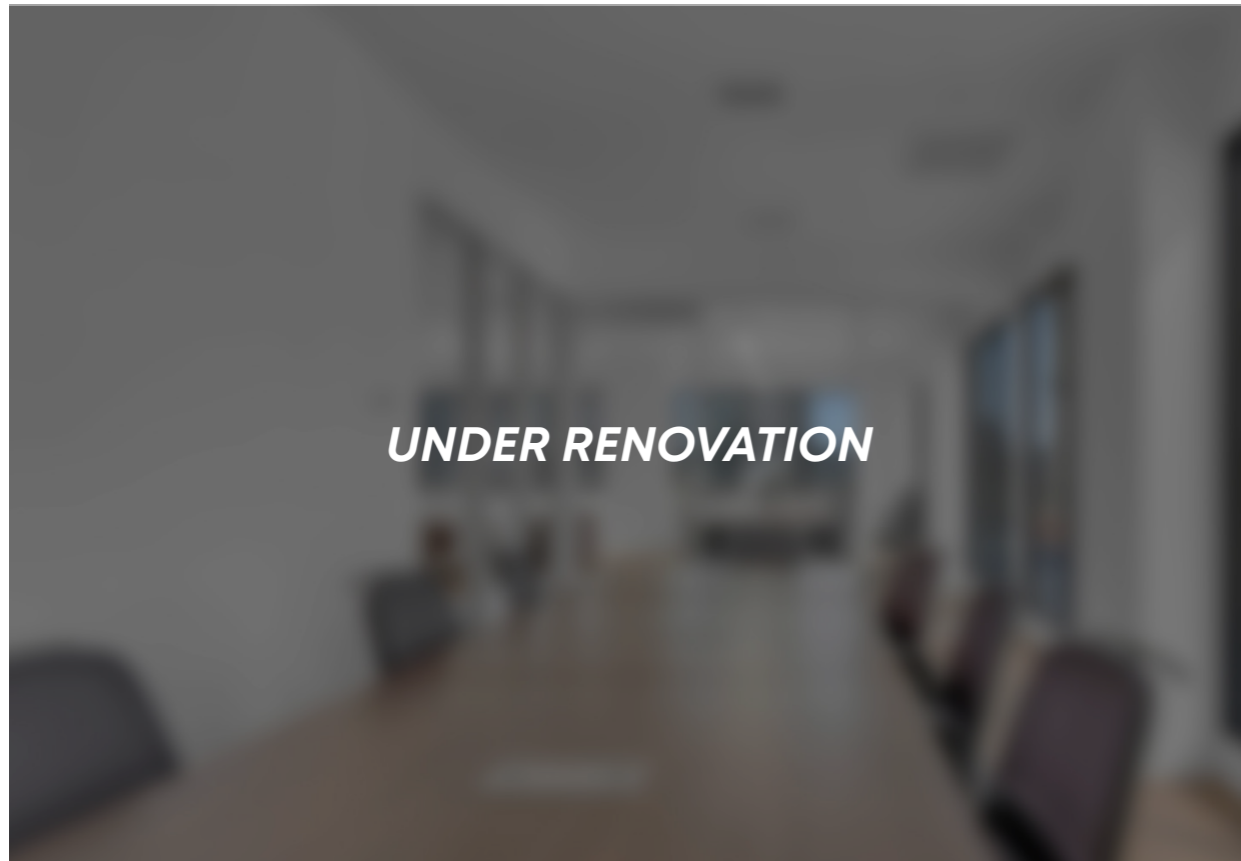
The Metropolis Trust Building

Suite 700

- | Four (4) Conference Rooms
- | Fully Furnished with Ten (10) Workstations
- | One (1) Phone Booth
- | Two (2) Sides of Floor to Ceiling Operable Windows
- | Abundant Natural Light Throughout
- | Brand New Kitchenette
- | New Hardwood Throughout
- | Full HVAC

Suite 710

- | Three (3) Conference Rooms
- | Fully Furnished with Ten (10) Workstations
- | Large Window Line with Operable Windows
- | Brand New Kitchenette
- | New Hardwood Throughout
- | Full HVAC



6TH FLOOR | 5,134 SQ. FT.

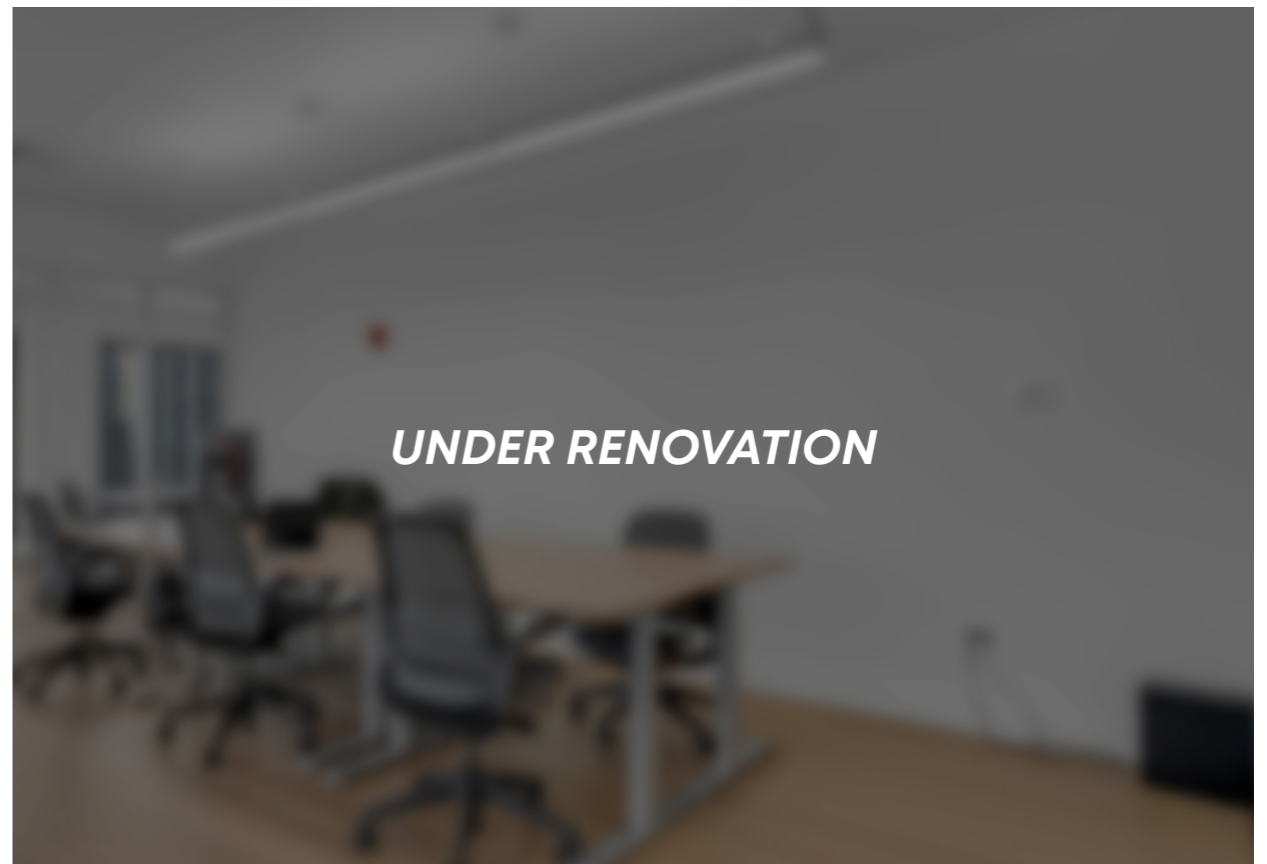
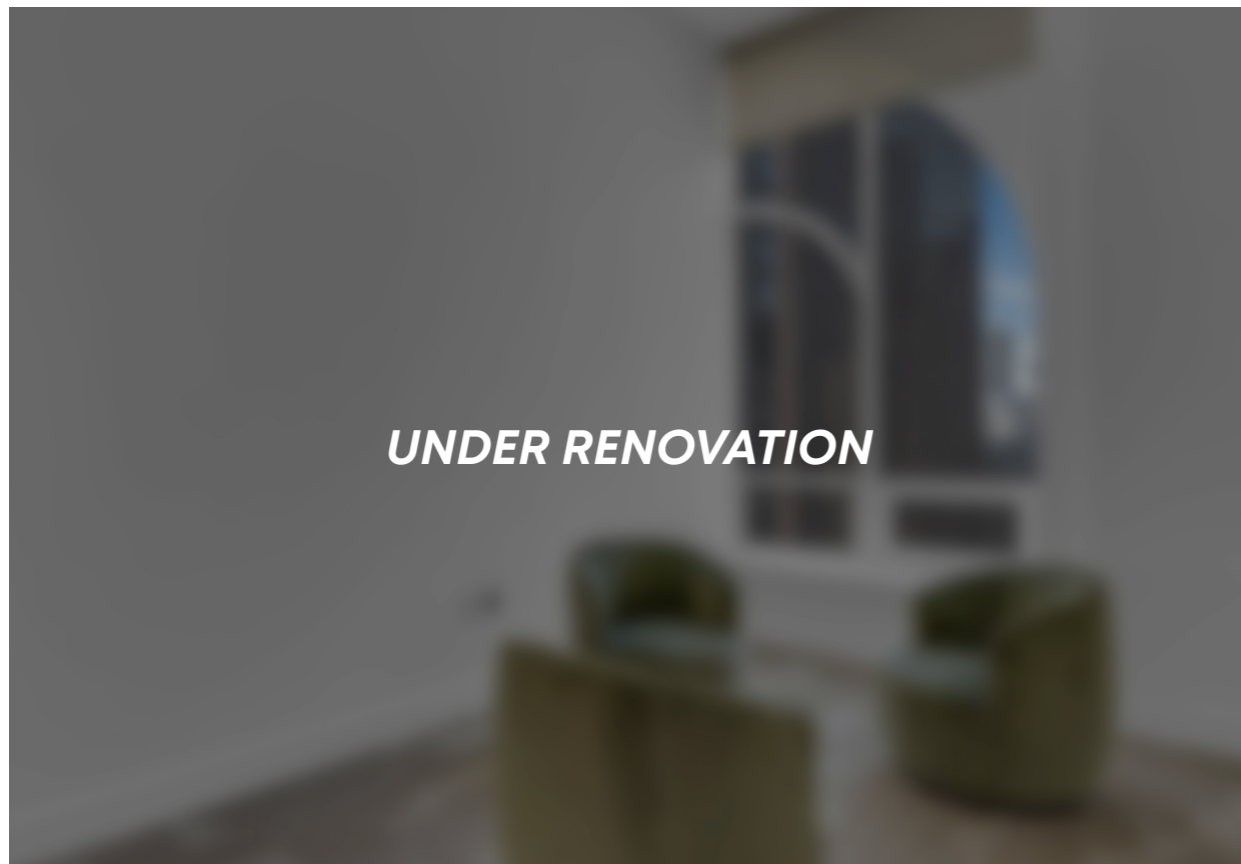
COMING SOON

625
MARKET

The Metropolis Trust Building

Completely Renovated Full Floor Creative Office

- | Elevator Access Directly Into Suite
- | Window Lines with City Views
- | Ample Natural Light Throughout, Operable Windows
- | Fully Furnished
- | Five (5) Conference Rooms
- | Full HVAC



5TH FLOOR | SUITE 500 2,718 SQ. FT. & SUITE 510 2,458 SQ. FT.

**625
MARKET**

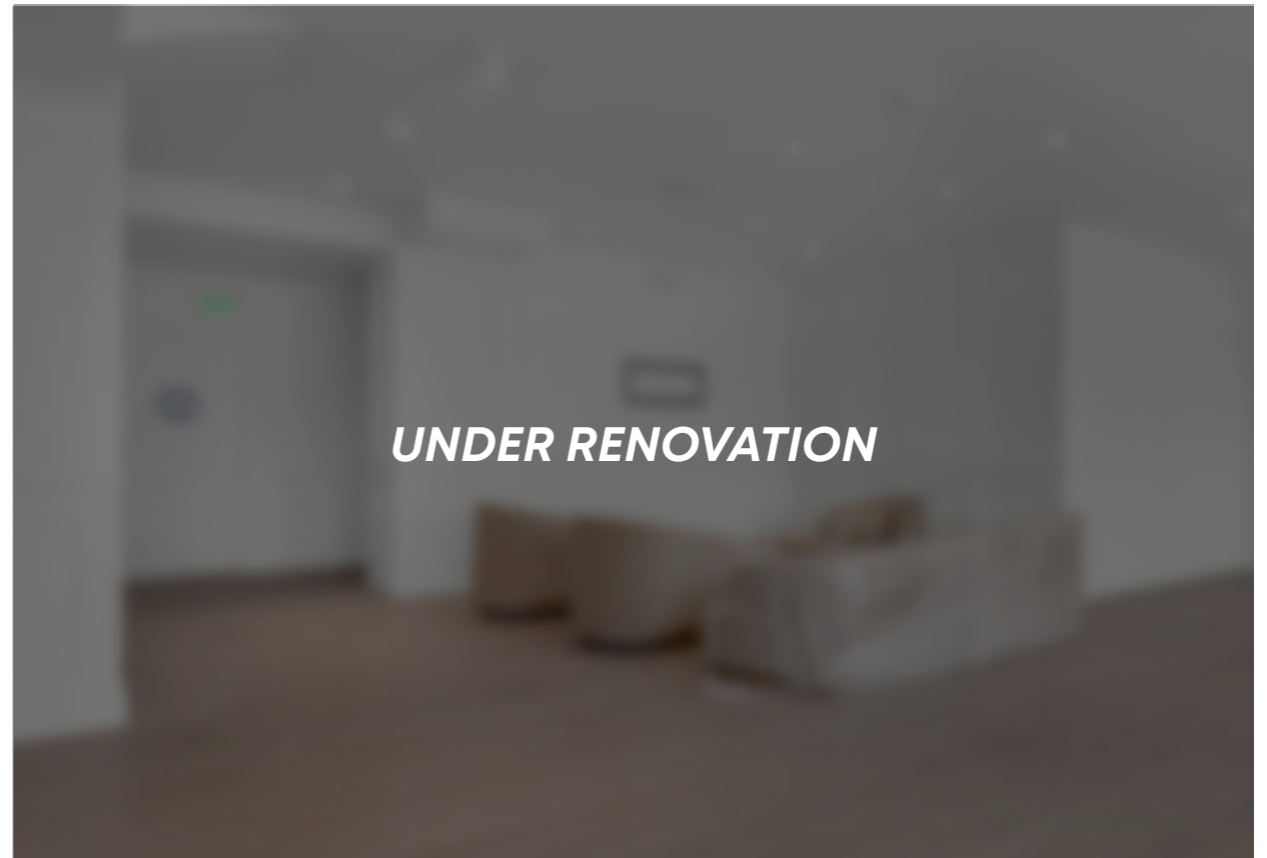
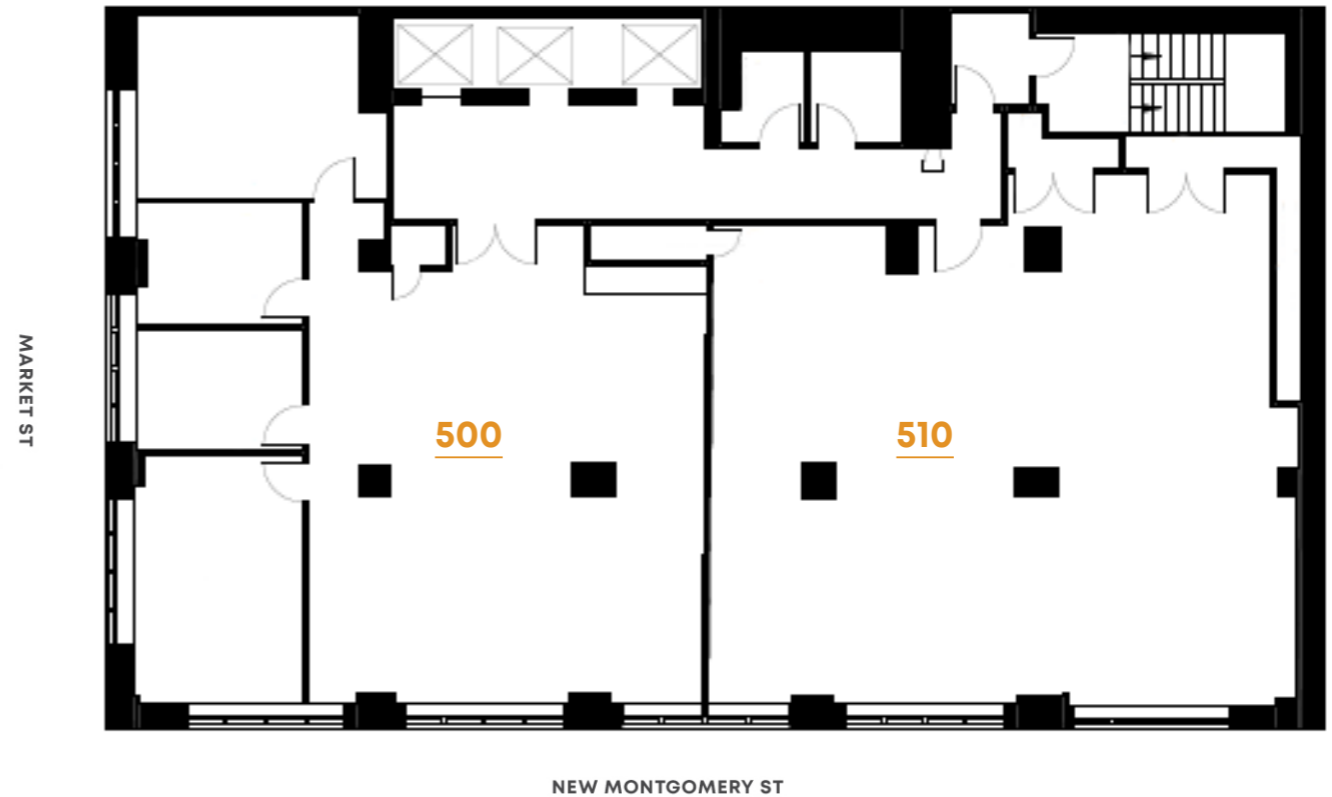
The Metropolis Trust Building

Suite 500

- | Four (4) Conference Rooms
- | Fully Furnished with Ten (10) Workstations
- | One (1) Phone Booth
- | Two (2) Sides of Floor to Ceiling Operable Windows
- | Abundant Natural Light Throughout
- | Brand New Kitchenette
- | New Hardwood Throughout
- | Full HVAC

Suite 510

- | Fully Furnished with Ten (10) Workstations
- | Large Window Line with Operable Windows
- | Brand New Kitchenette
- | New Hardwood Throughout
- | Full HVAC



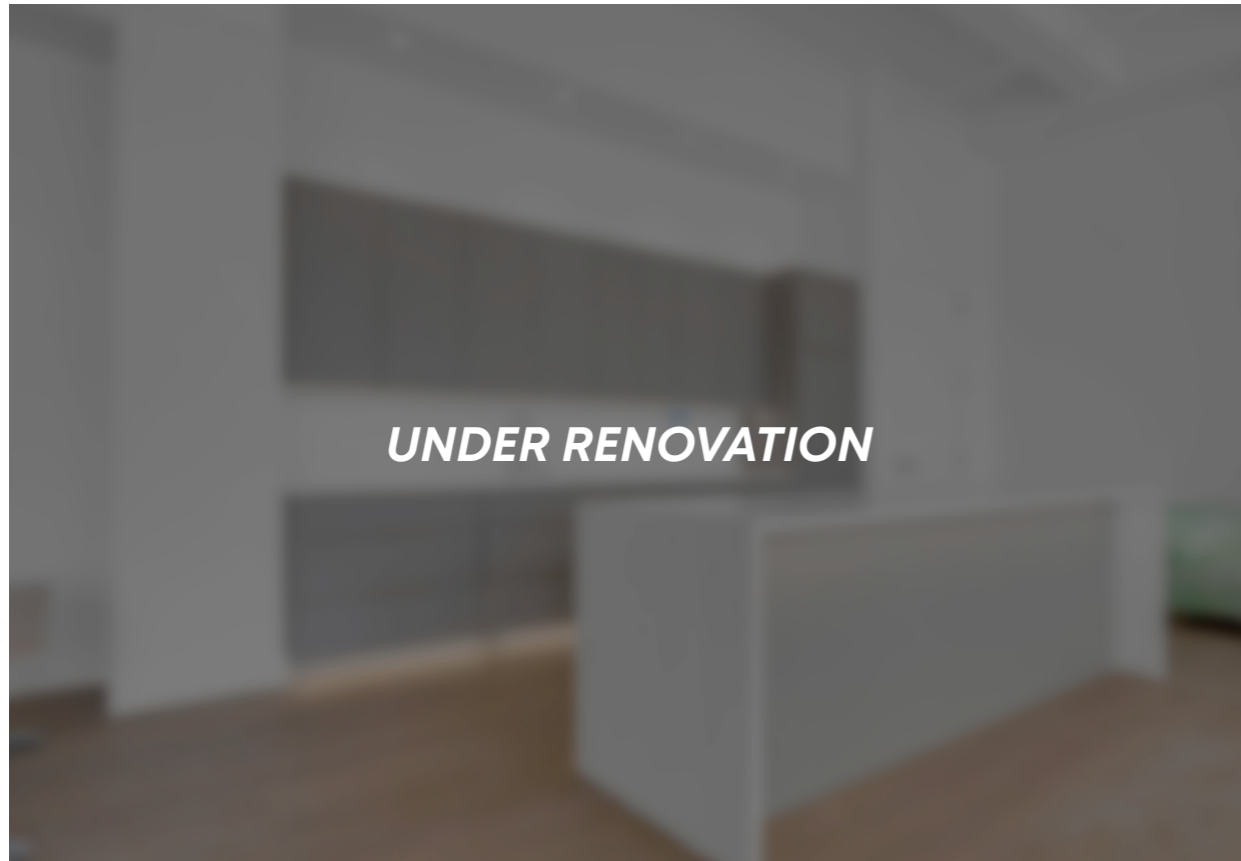
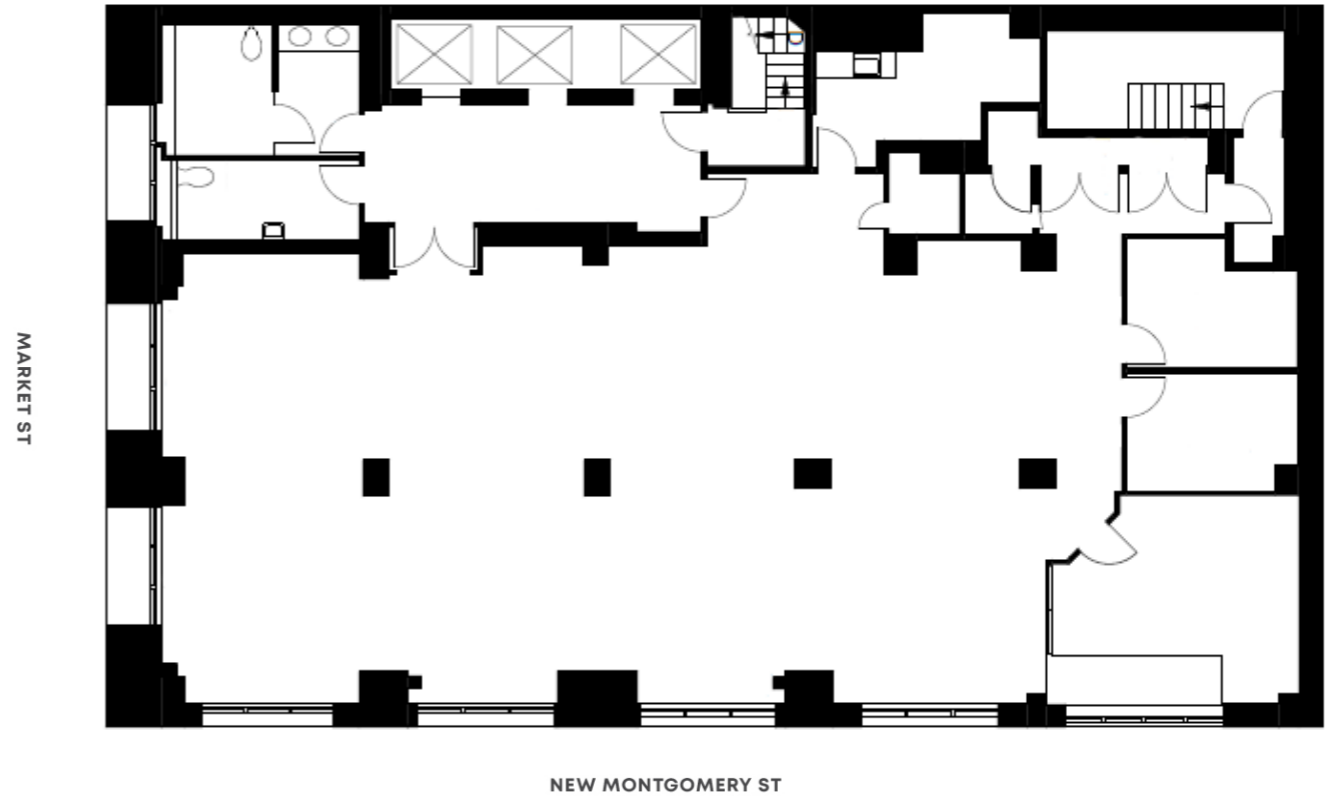
2ND FLOOR | 4,838 SQ. FT.

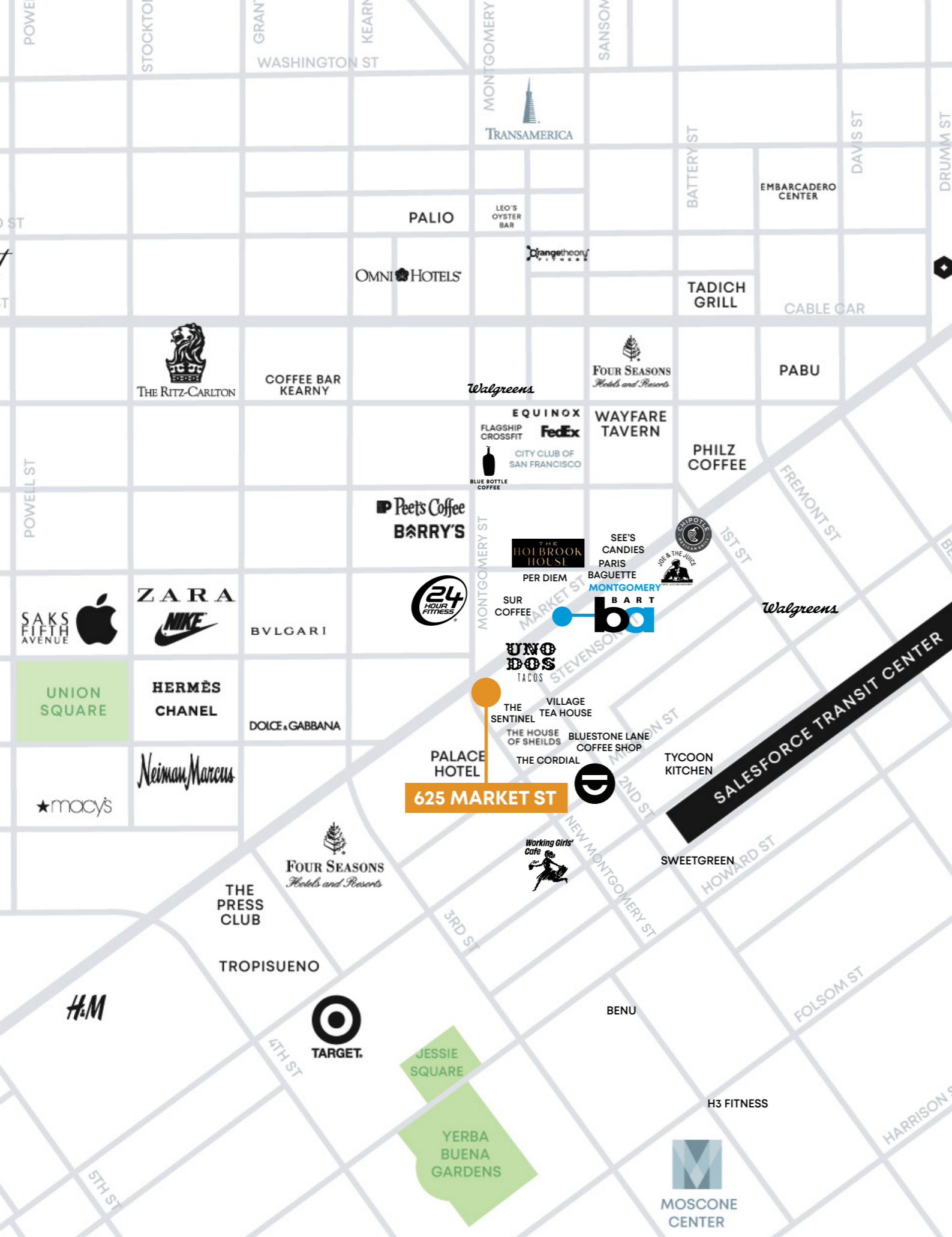
625
MARKET

The Metropolis Trust Building

Completely Renovated Full Floor Creative Office

- | Rarely Available Creative Space with 20' Ceiling Heights
- | Elevator Access Directly Into Suite
- | Two (2) Sides of Floor to Ceiling Operable Windows
- | Three (3) Conference Rooms
- | Fully Furnished with Twenty-one (21) Workstations
- | Brand New Kitchenette
- | New Hardwood Throughout
- | Two (2) Renovated Marble Bathrooms
- | Full HVAC





625 MARKET
The Metropolis Trust Building

SURROUNDING AMENITIES

HOTELS

- | 1 Hotel
- | Fairmont
- | Four Seasons
- | Omni Hotel
- | Palace Hotel
- | Ritz Carlton
- | The Sentinel

RESTAURANTS

- | Battery
- | House of shields
- | Kokkari Estiatorio
- | Chipotle
- | Palio D'Asti
- | Press Club
- | Vault Garden
- | Vault Steakhouse
- | Tropisueno
- | Wayfare Tavern
- | Sweetgreen
- | Village Tea House
- | Uno Dos Tacos
- | Benu
- | Tycoon Kitchen
- | Holbrook House
- | Paris Baguette

COFFEE SHOPS

- | Blue Bottle
- | Sur coffee
- | Kearney
- | Peets Coffee
- | Philz Coffee
- | The Cordial
- | Working Girls' Cafe
- | Bluestone Lane
- | Joe & the juice
- | Outset Coffee

GYMS

- | Bay Club
- | Equinox
- | Flagship Crossfit
- | Orangetheory Fitness
- | H3 Fitness
- | 24 hour fitness

CONVENIENCE

- | Fed Ex
- | Poke Bar
- | Proper Food
- | Walgreens
- | Per Diem

625 MARKET

The Metropolis Trust Building

BANK OF AMERICA

BANK OF AMERICA



TREVOR GUDIM

Executive Vice President
Email: trevor@calco-sf.com
Cell: 858.922.2632
DRE #01979980

LINDSAY CUTLER

Associate
Email: lindsay@calco-sf.com
Cell: 714.322.9194
DRE #02198286

 **CALCO**
COMMERCIAL, INC.

We're Here to Help – Reach Out Today!

425 2nd St. Suite 450, San Francisco, CA 94107 | info@calcosf.com | (415) 970-0000 | calcosf.com