



AVAILABLE 2Q2026



237,636 SF AVAILABLE FOR LEASE

10156 LIVE OAK AVENUE | FONTANA, CA 92335

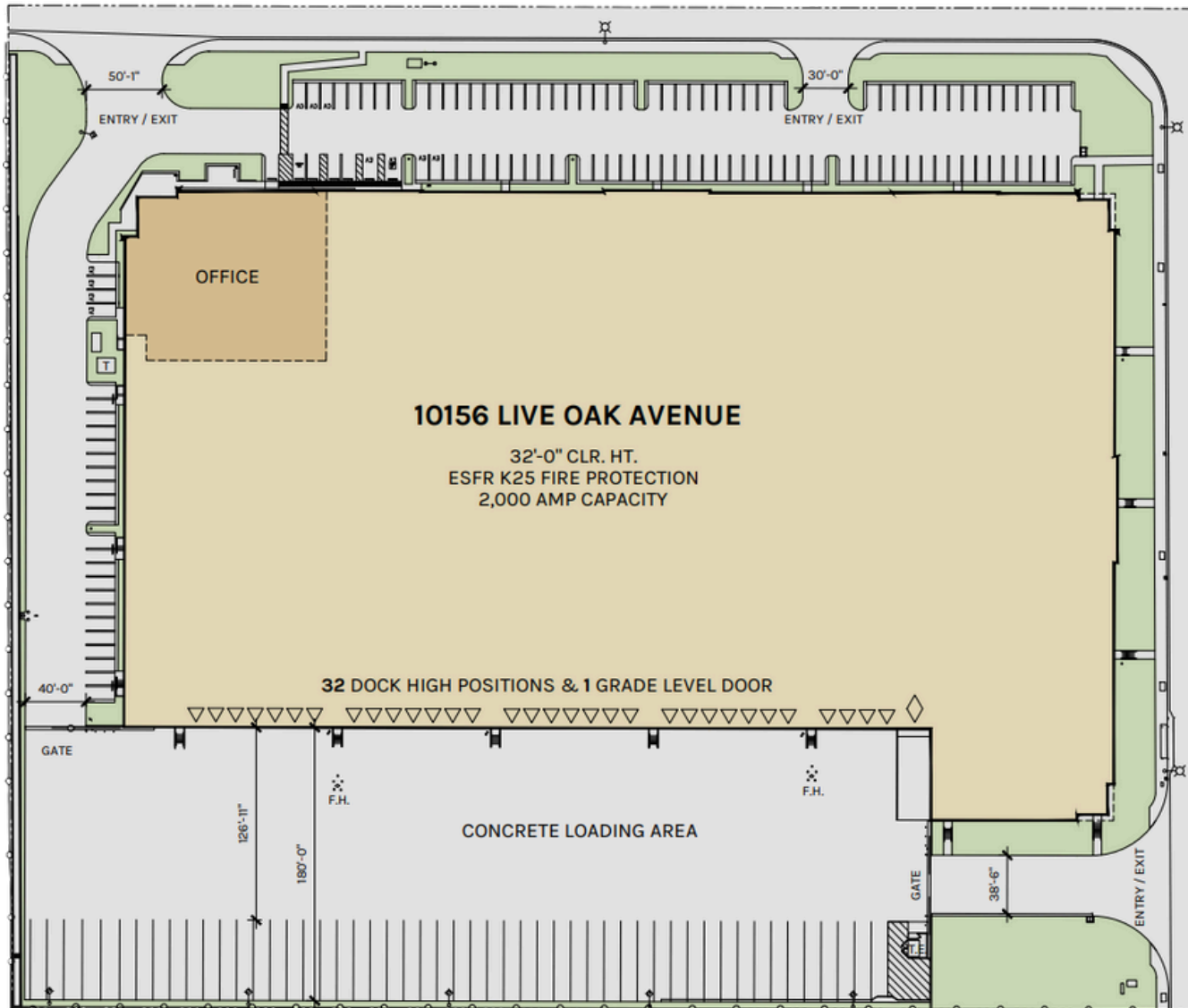
PREMIER WAREHOUSE DISTRIBUTION FACILITY



Property Highlights

- 237,636 SF Building
- 14,146 SF of Office Space
- 32' Clear Height
- 32 (9' x 10') Dock High Doors
- 1 (12' x 14') Ground Level Door
- 3% Skylights
- 2,000 Amp UGPS with 800 Amp House Panel
- ESFR Fire Sprinkler System (K-25, 40 psi)
- 4-ply Built-Up Roof
- Scrim Foil Insulation
- Secured, Full-Concrete Truck Court (180') & Drive Aisles
- 51 Trailer Storage Stalls
- 128 Auto Parking Stalls



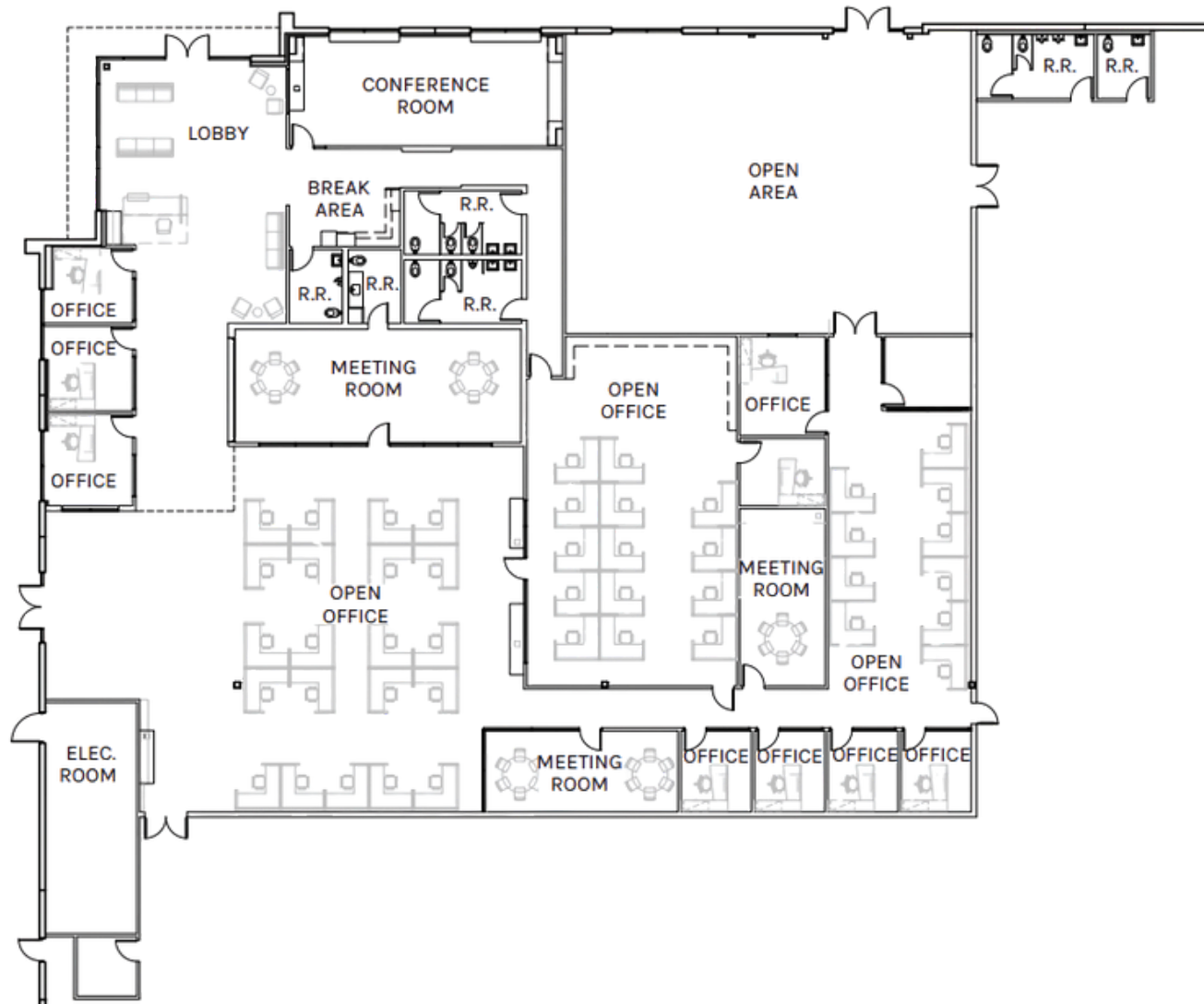


WAREHOUSE
223,490 SF

OFFICE
14,146 SF

TOTAL
237,636 SF

PLAN LAYOUT SUBJECT TO FIELD CONDITIONS AND MAY DIFFER FROM PLAN AS SHOWN. ALL INFORMATION PRESENTED ON THIS DRAWING IS PRESUMED TO BE ACCURATE, HOWEVER TENANT SHOULD VERIFY PERTINENT INFORMATION PRIOR TO COMMITTING TO A LEASE. ANY FURNITURE OR APPLIANCES SHOWN ON PLAN ARE FOR CONCEPT ONLY AND WILL BE TENANT PROVIDED.



WAREHOUSE
223,490 SF

OFFICE
14,146 SF

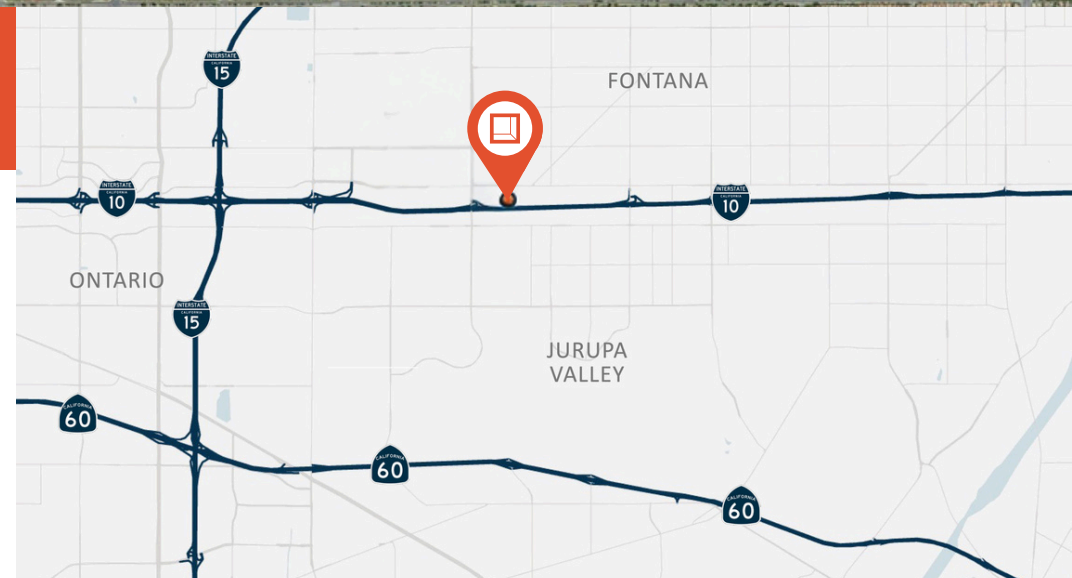
TOTAL
237,636 SF

PLAN LAYOUT SUBJECT TO FIELD CONDITIONS AND MAY DIFFER FROM PLAN AS SHOWN. ALL INFORMATION PRESENTED ON THIS DRAWING IS PRESUMED TO BE ACCURATE, HOWEVER TENANT SHOULD VERIFY PERTINENT INFORMATION PRIOR TO COMMITTING TO A LEASE. ANY FURNITURE OR APPLIANCES SHOWN ON PLAN ARE FOR CONCEPT ONLY AND WILL BE TENANT PROVIDED.



Location Highlights

- I-10 Freeway Exposure
- Immediate Access to Cherry Ave Off Ramp
- Inland Empire West Location
- Industrial Business Park Environment
- 0.9 miles to I-10 Freeway
- 4.2 miles to I-15 Freeway
- 6.4 miles to Ontario Int'l Airport





**Rexford
Industrial**

Leasing Contacts

AUSTIN HILL
SVP / Principal
909.373.2732
ahill@lee-assoc.com
LIC # 01921364

TYLER PLATA
SVP / Principal
909.373.2948
tplata@lee-assoc.com
LIC # 02083579

HOLDEN EDMONDSON
Associate
909.373.2916
hedmondson@lee-assoc.com
LIC # 02124931

IAN ARMBRUSTER
Senior Associate
909.373.2902
iarmbruster@lee-assoc.com
LIC # 02151900

JEFF SMITH
SVP / Principal
909.989.7771
jsmith@lee-assoc.com
LIC # 01186136



Lee & Associates
3535 Inland Empire Blvd
Ontario, CA 91764
Corporate ID 00976995
909.989.7771

All information furnished regarding property for sale, rental or financing is from sources deemed reliable, but no warranty or representation is made to the accuracy thereof and same is submitted to errors, omissions, change of price, rental or other conditions prior to sale, lease or financing or withdrawal without notice. No liability of any kind is to be imposed on the broker herein.