

SIGNIFICANT RESTAURANT WITH PATIO OPPORTUNITY AVAILABLE SPRING 2028



# JUNCTION AT MARKET AND MAIN BLOCK B

4150 Market Street SE  
Calgary, AB

**Brookfield**  
Residential

**CBRE**

# Highlights

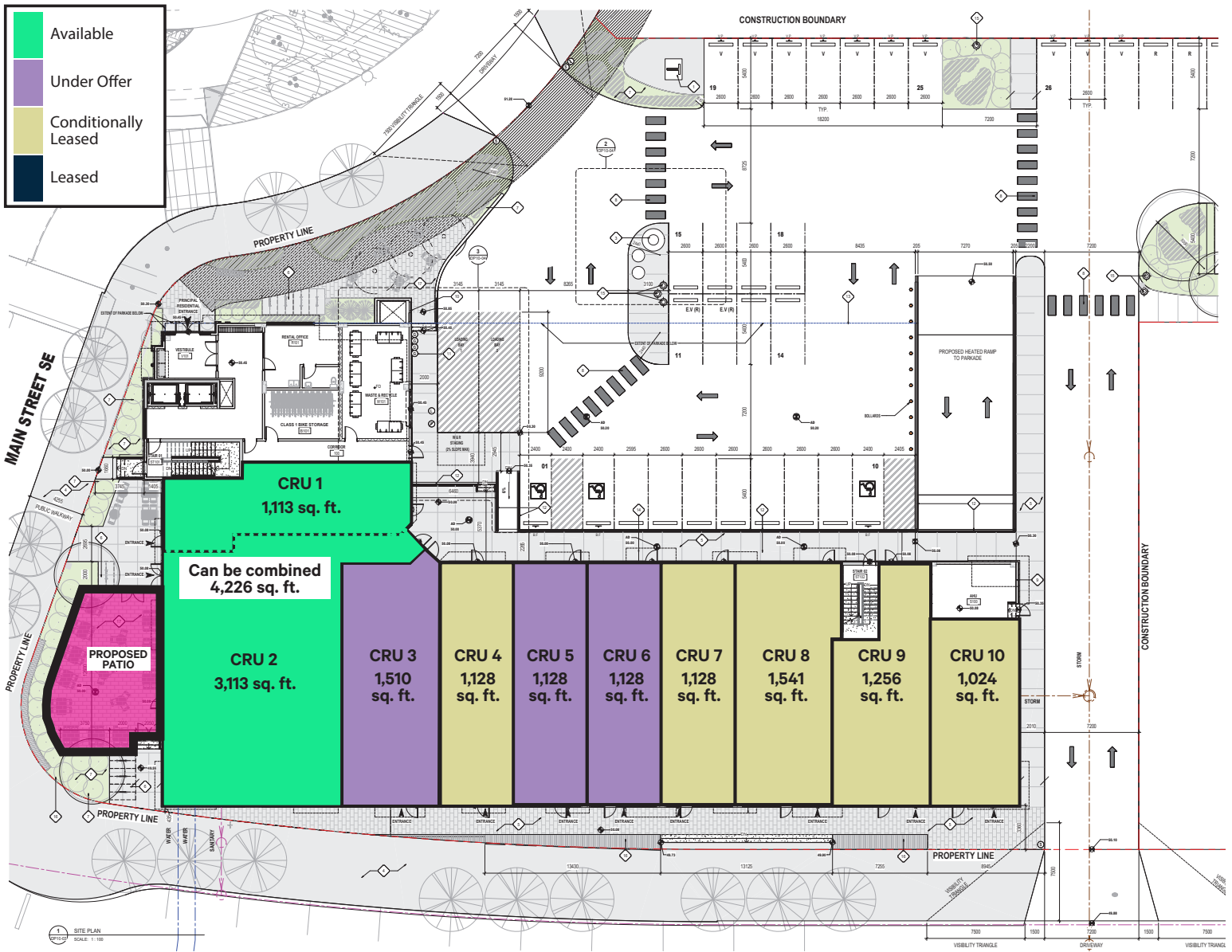


## Prime opportunity for signature restaurant & retail in the new Junction at Market and Main development in SE Calgary

- Community uses include Retail, Employment, Public Services (Healthcare, Emergency Services, LRT, Education & Recreation) and Residential
- Anticipated build out by 2035
- 675 acre residential community adding 8,300 dwelling units for an expected population of 17,500
- Construction is set to start on this portion of Market Street in 2026 and turnover in 2028
- Market Street uses include grocery, retail, restaurant and residential
- Block B envisages a total of 14,532 sq. ft. of high quality main floor space



# Block B Building Plans



## Space Available

CRU 1 - 1,113 sq. ft.

CRU 2 - 3,113 sq. ft. with patio

**\*\* CRU 1 & 2 can be combined (4,226 sq. ft. with patio) \*\***

CRU 3 - 1,510 sq. ft.

CRU 4 - 1,128 sq. ft. (C/L)

CRU 5 - 1,128 sq. ft.

CRU 6 - 1,128 sq. ft.

CRU 7 - 1,128 sq. ft. (C/L)

CRU 8 - 1,541 sq. ft. (C/L)

CRU 9 - 1,256 sq. ft. (C/L)

CRU 10 - 1,024 sq. ft. (C/L)



BASIC RENT - Market

OP COSTS & TAXES - TBD

SIGNAGE - Fascia

COMMENCEMENT - Spring 2028

TERM - 5 - 10 years

# Land Use Overview

## MARKET STREET

- 155,000 sq. ft. multi tenant retail space
- 236 assisted living units
- 450 condo/townhouse units
- 100,000 sq. ft. medical office (Front Street)

## RECREATIONAL

- Brookfield Residential YMCA & Public Library, JCS (CBE) High School, 16 acre Regional Park

## MULTI FAMILY RESIDENTIAL

- 1,000+ multi family residential units

## PUBLIC SERVICES

- 2 LRT (Greenline) Park & Ride Stations
- Multi-services facility (Police, Fire, ABS, CNS)

## EMPLOYMENT DISTRICT

- Up to 1.5 million sq. ft. of office space
- Seniors Village (311 unit supportive living & 170 units assisted and independent living)

## GATEWAY DISTRICT

- 225 room Marriot Hotel
- 117 room Microtel Hotel
- 25,000 sq. ft. retail

## SOUTH HEALTH CAMPUS

- Phase 1 - 1.7 million sq. ft. offering 130 + programs/services, 265 beds, typically 3,800 staff on site at any given time
- Phase 2 (future) - capacity upgraded to 695 beds, 5500 staff

## REGIONAL RETAIL & DESIGN DISTRICT

- 700,000 sq. ft. of regional and local oriented retail space



# Aerial Views

Looking North



Looking West



Looking East



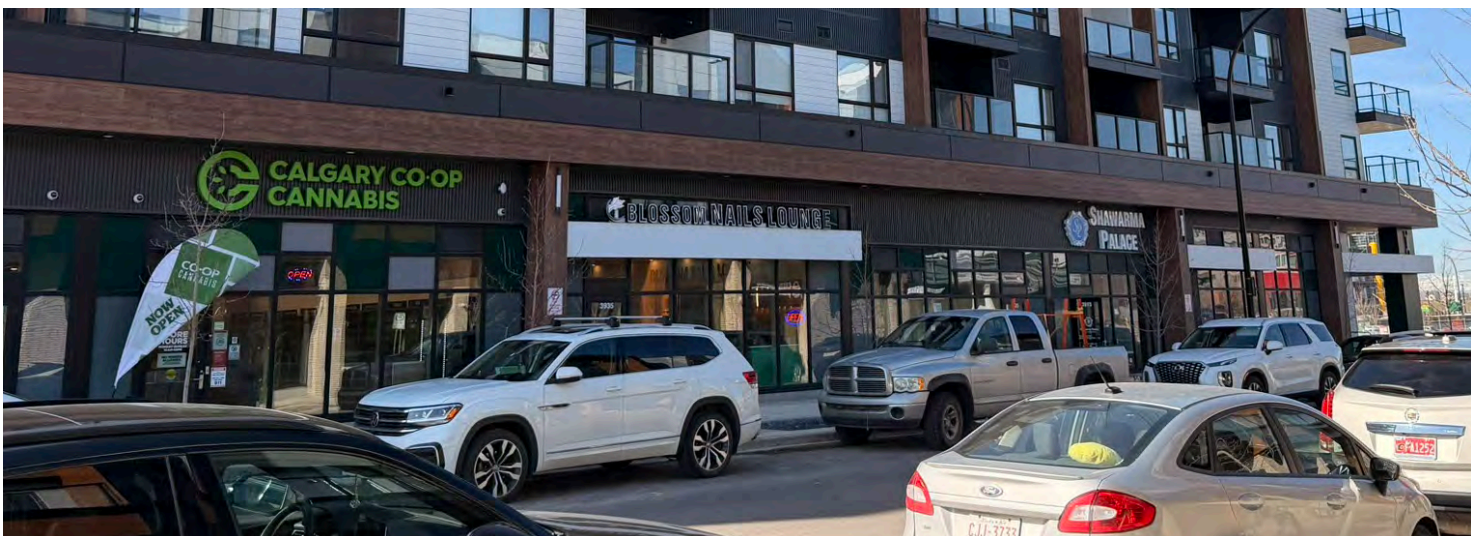
# Block B Renderings



# Junction 21 Photos



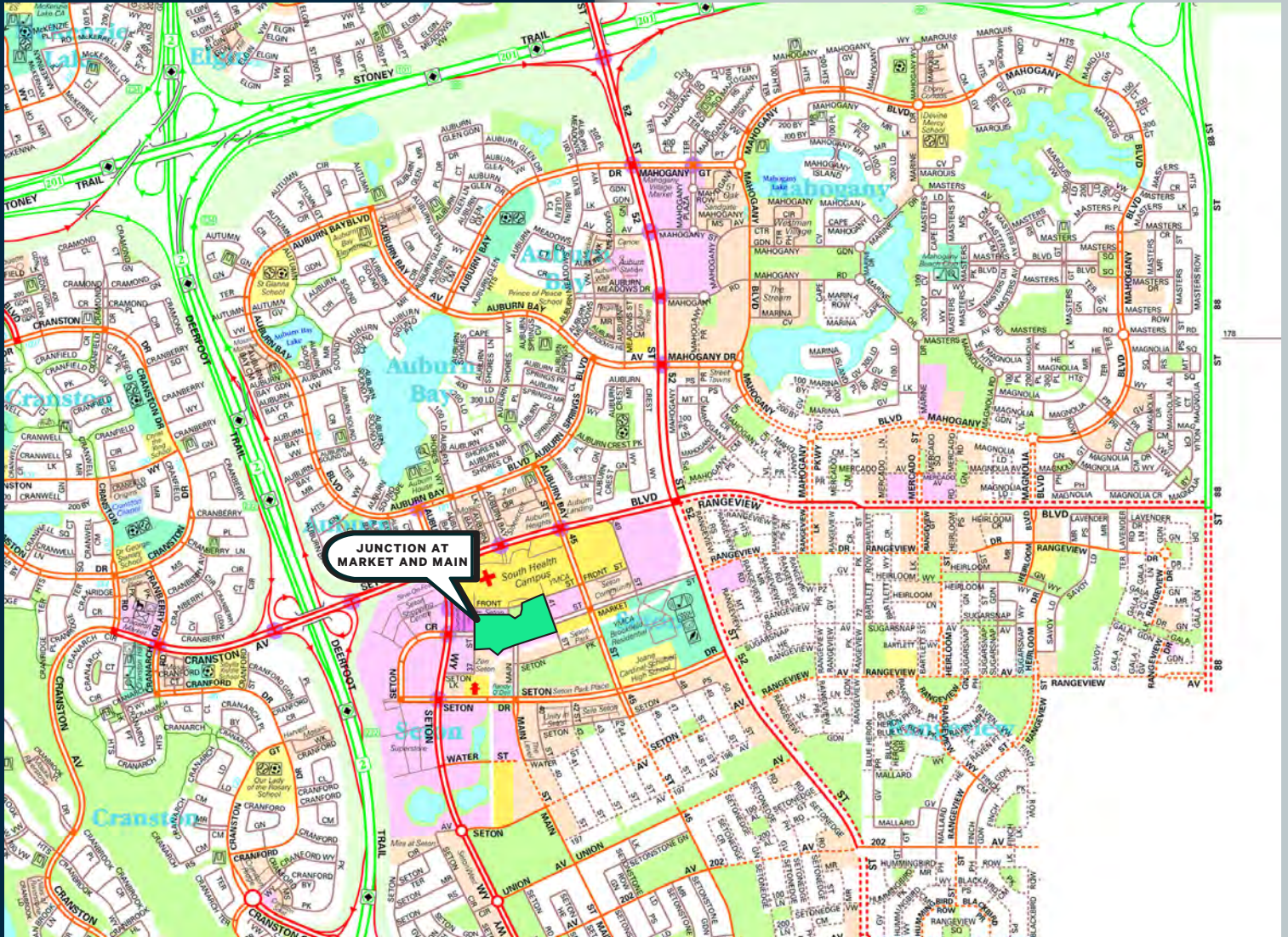
# Junction 88 Photos



# Block C Photos



# Area & Nearby



For More Information Please Contact

**Alistair Corbett**  
Senior Vice President  
403.294.5709  
alistair.corbett@cbre.com

**Cory Miles**  
Senior Sales Associate  
403.750.0523  
cory.miles@cbre.com

**Mac Marcinew**  
Sales Associate  
587.583.7197  
mac.marcinew@cbre.com

**Jayne Rogers**  
Transaction Manager  
403.750.0535  
jayce.rogers@cbre.com

**Brandy Chorney**  
Marketing Specialist  
403.303.3609  
brandy.chorney@cbre.com

CBRE Calgary  
Eighth Avenue Place  
East Tower 525 8 Avenue SW Suite 3200  
Calgary, Alberta T2P 1G1

This disclaimer shall apply to CBRE Limited, and to all divisions of the Corporation ("CBRE"). The information set out herein (the "Information") has not been verified by CBRE, and CBRE does not represent, warrant or guarantee the accuracy, correctness and completeness of the Information. CBRE does not accept or assume any responsibility or liability, direct or consequential, for the Information or the recipient's reliance upon the Information. The recipient of the Information should take such steps as the recipient may deem necessary to verify the Information prior to placing any reliance upon the Information. The Information may change and any property described in the Information may be withdrawn from the market at any time without notice or obligation to the recipient from CBRE. Mapping Sources: Canadian Mapping Services canadamapping@cbre.com; DMTI Spatial, Environics Analytics, Microsoft Bing, Google Earth. Map© 2024 Sherlock Publishing Ltd.