

LONDON

# Welcome to eOffice Strand

A flexible office solution with more  
freedom for you and your business.

+44 2078 514700 | [hello@eoffice.net](mailto:hello@eoffice.net)

eoffice®  
the alternative workspace

NEVER  
GIVE UP  
GREAT THINGS  
TAKE  
TIME

Why choose eOffice?

At eOffice, we bring over 20 years of experience in providing innovative and flexible office solutions.

Office solutions for the changing world of work

We offer flexible managed office solutions that give you the flexibility to change as your business does.



# 5 good reasons to choose eOffice for your next workspace.

Our packages help you work in a way that suits you, your employees and the nature of your business. As a Certified B Corporation we also recognise our social and environmental responsibilities, balance profit with purpose and are committed to building a fairer, more inclusive and sustainable future for the people we work with.

**Certified**



**Corporation**

## 1 - We Have a Bespoke 1-1 Client Approach

We believe that no two businesses are the same, which is why our dedicated team works closely with you to understand your specific requirements, tailoring solutions that perfectly fit your company's needs and goals.

## 2 - We're Environmentally Conscious

As a B Corp certified company, eOffice is committed to sustainability and ethical practices. We prioritise eco-friendly initiatives, ensuring that our operations contribute to a healthier planet while helping you reduce your own environmental footprint.

## 3 - We Provide an Exceptional Service to our Clients

We pride ourselves on delivering exceptional customer service. From the moment you engage with us, you'll experience professionalism, responsiveness, and a deep commitment to your success.

## 4 - There are no Hidden Fees or Extras

Transparency is key to building trust, which is why eOffice operates with no hidden fees. What you see is what you get—clear, honest pricing with no surprises.

## 5 - We Have Plug & Play Solutions for all Your Tech

Get started with ease! Our hassle-free solutions allow you to seamlessly integrate our services into your business, with minimal setup and maximum efficiency. Whether you're scaling up or transitioning to a new setup, we make it simple to hit the ground running.



# Flexible office solutions on 60 Strand

A range of fully managed spaces for small and large teams



Located on the southern side of the Strand in the central section, just a few minutes' walk from Covent Garden, eOffice Strand sits on 2nd and 3rd floor of a newly renovated period building. eOffice Strand offers a range of flexible workspace solutions for small and large teams, excellent transport links both to tube and train networks – Embankment, Charing Cross and Waterloo being just a few minutes' walk away. The offices are fully furnished and managed, with a receptionist on ground floor, 24/7 secured access, meeting rooms, kitchen, advanced IT infrastructure with its own access App and additional support.

This location offers the perfect work/life balance for your team with access to buzzing Covent Garden, main cultural attraction, all the convenience of Strand. When choosing a new office, we know that the combination of flexible conditions, state of the art technology and beautiful design is difficult to beat.










# eOffice Strand

60 Strand, London WC2N 5LR



Our newly refurbished Strand Flex office offers a range of office spaces for small and large team over 6,000 SqFt.

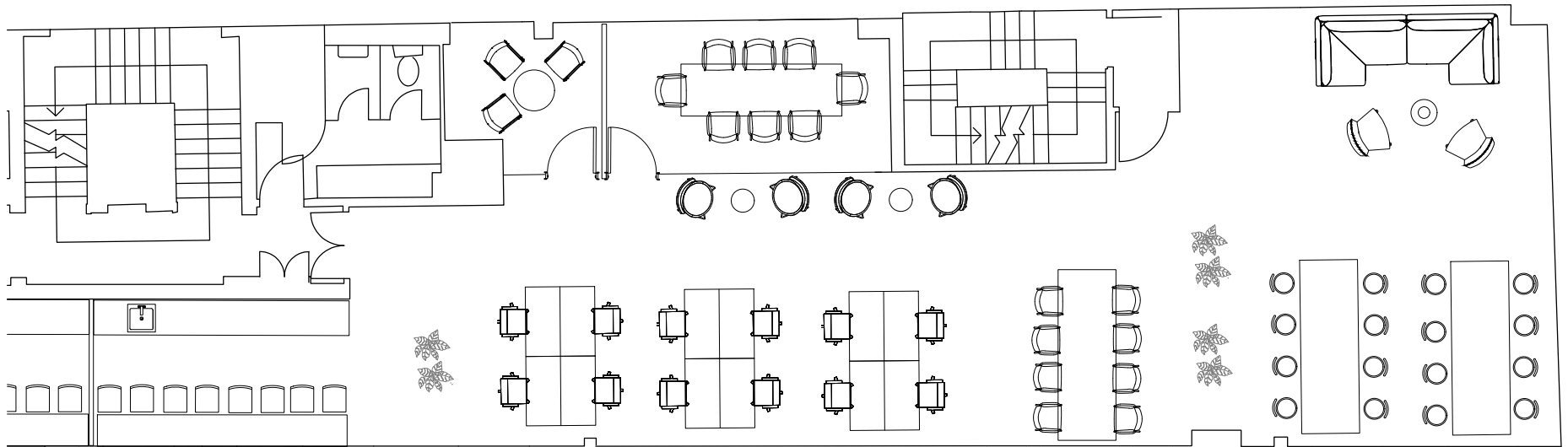
## Amenities

-  B Corp Certified Space
-  Super Fast Dedicated Fibre Connection
-  Kitchen
-  Meeting Rooms and Boardrooms
-  Breakout Areas
-  Bike racks
-  Space can be Fully Bespoke
-  Reception on ground floor
-  24/7 Secured access

# Floorplan

2nd Floor

Approx 1,600 sq ft



[View / download 2D floor plan >](#)



# Location & Contact

## Location

60 Strand,  
London WC2N 5LR

## Contact

+44 2078 514700  
london@eoffice.net



<b>Embankment</b> 2 min walk	<b>Charing Cross</b> 4 min walk	<b>Covent Garden</b> 5 min walk	<b>Waterloo</b> 8 min walk

