

300 WEST PRATT STREET

Baltimore, MD 21201

Office For Lease

1,797 - 9,804 SF



Leasing Information:
410.659.1234

Brent Prossner **Kyle Bell**
410.659.1234 x122 410.659.1234 x117
bprossner@lpc.com kbell@lpc.com

Lincoln

Lincoln Property Company
300 W Pratt Street Suite 520
Baltimore, MD 21201

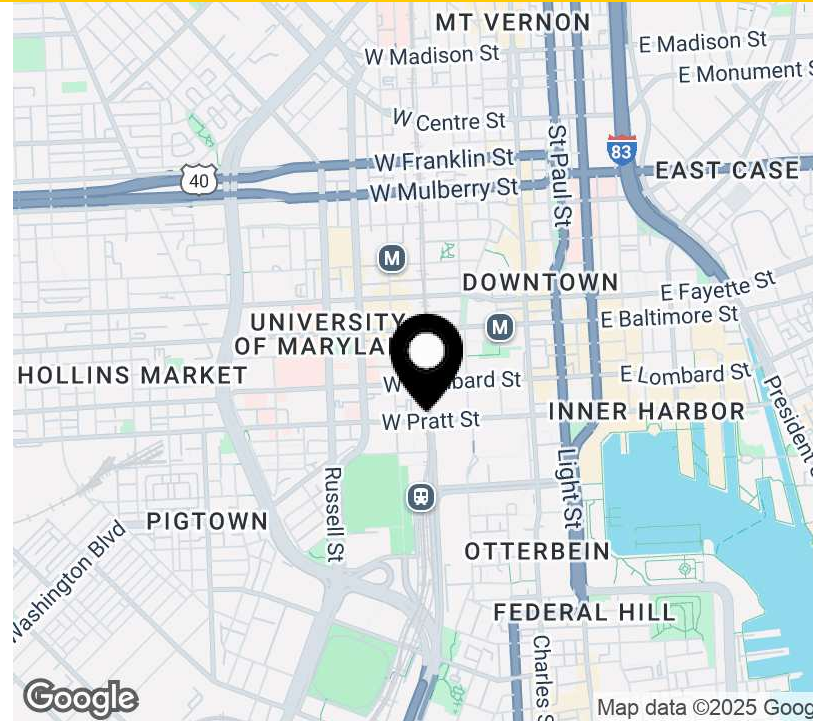
www.lpc.com

300 WEST PRATT STREET

Office For Lease

61,655 SF

Baltimore, MD 21201



Property Highlights

- Class A office building in premier location
- Above standard finishes
- On-site security
- 1st floor retail to include Chipotle, Dunkin Donuts, and Luna Del Sea
- 36 on-site parking spaces, plus located across the street from a public parking garage
- Located across the street from Camden Yards, Baltimore Convention Street, etc.
- Walking distance to 2 light rail stops and the MARC train (Camden Station)
- Free parking and passes for local gym membership for new tenants
- Small suites available
- Single offices or desks available

Availabilities

SF

Date Available

Suite 250	1,797 SF	Immediately
Suite 310	6,813 SF	Negotiable
Suite 350	3,375 SF	Immediately
Suite 400	2,750 SF	Immediately
Suite 450	8,067 SF	Immediately
Suite 500	2,206 - 9,804 SF	Immediately

Brent Prossner

Kyle Bell

410.659.1234 x122

410.659.1234 x117

bprossner@lpc.com

kbell@lpc.com

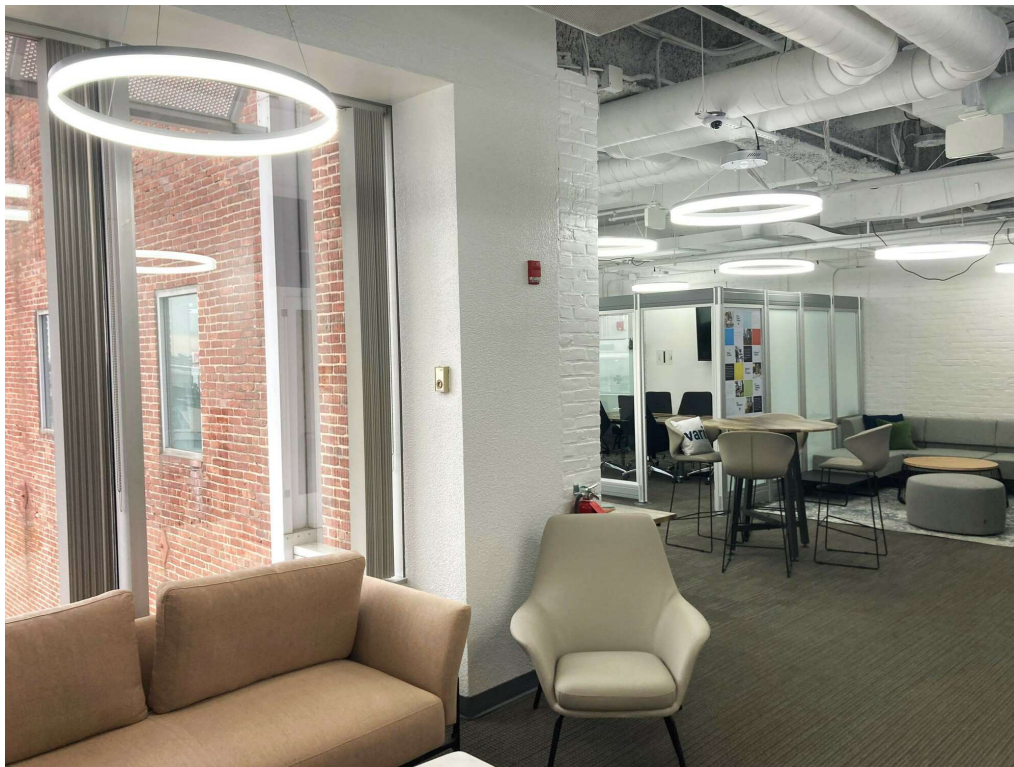
Lincoln

300 WEST PRATT STREET

Baltimore, MD 21201

Above Standard Finishes

61,655 SF



Brent Prossner
410.659.1234 x122
bprossner@lpc.com

Kyle Bell
410.659.1234 x117
kbell@lpc.com

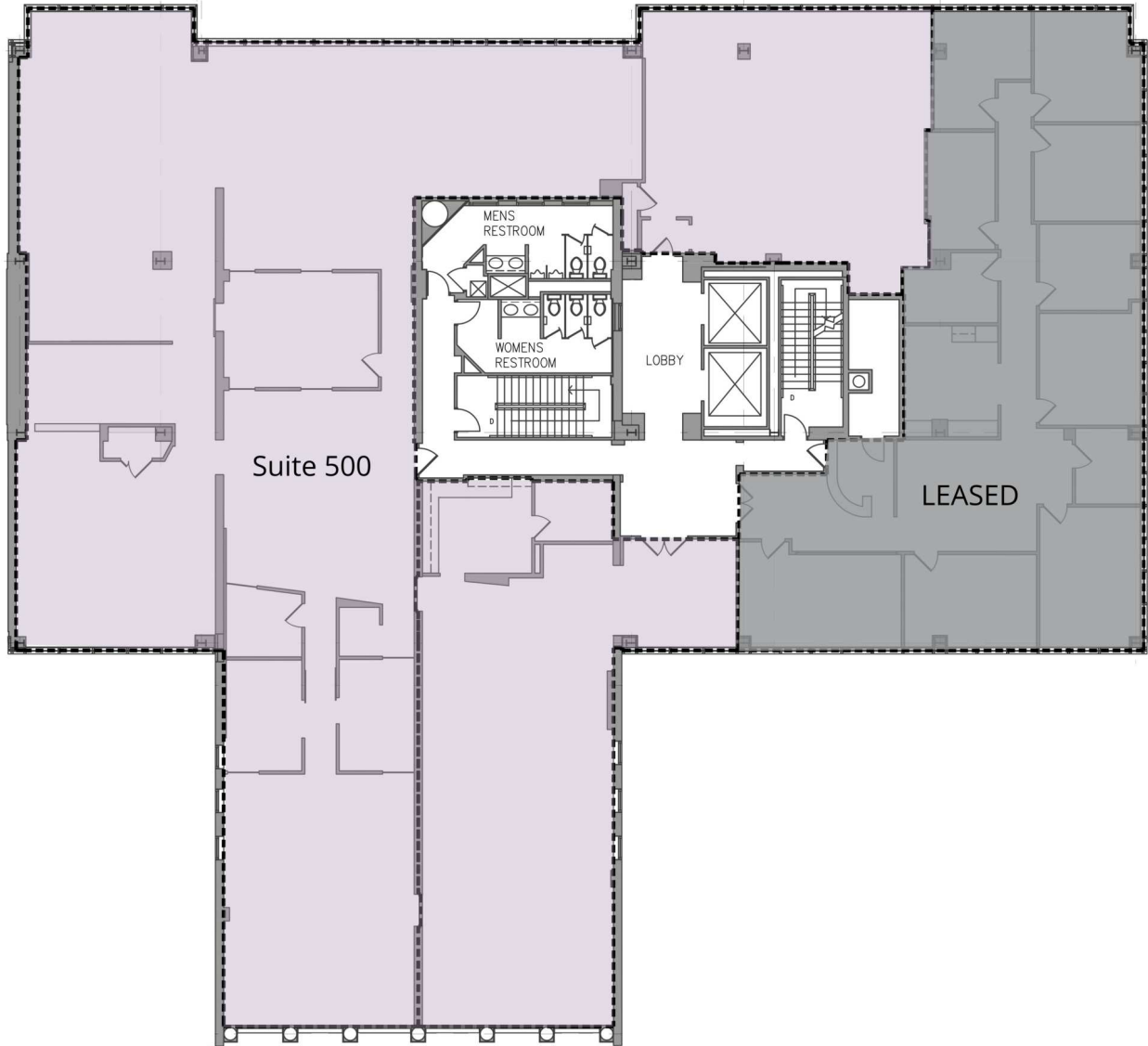
Lincoln

300 WEST PRATT STREET

Baltimore, MD 21201

Suite 500

2,206 - 9,804 SF



Suite	Size	Description
■ Suite 500	2,206 - 9,804 SF	Available immediately

Brent Prossner

410.659.1234 x122
bprossner@lpc.com

Kyle Bell

410.659.1234 x117
kbell@lpc.com

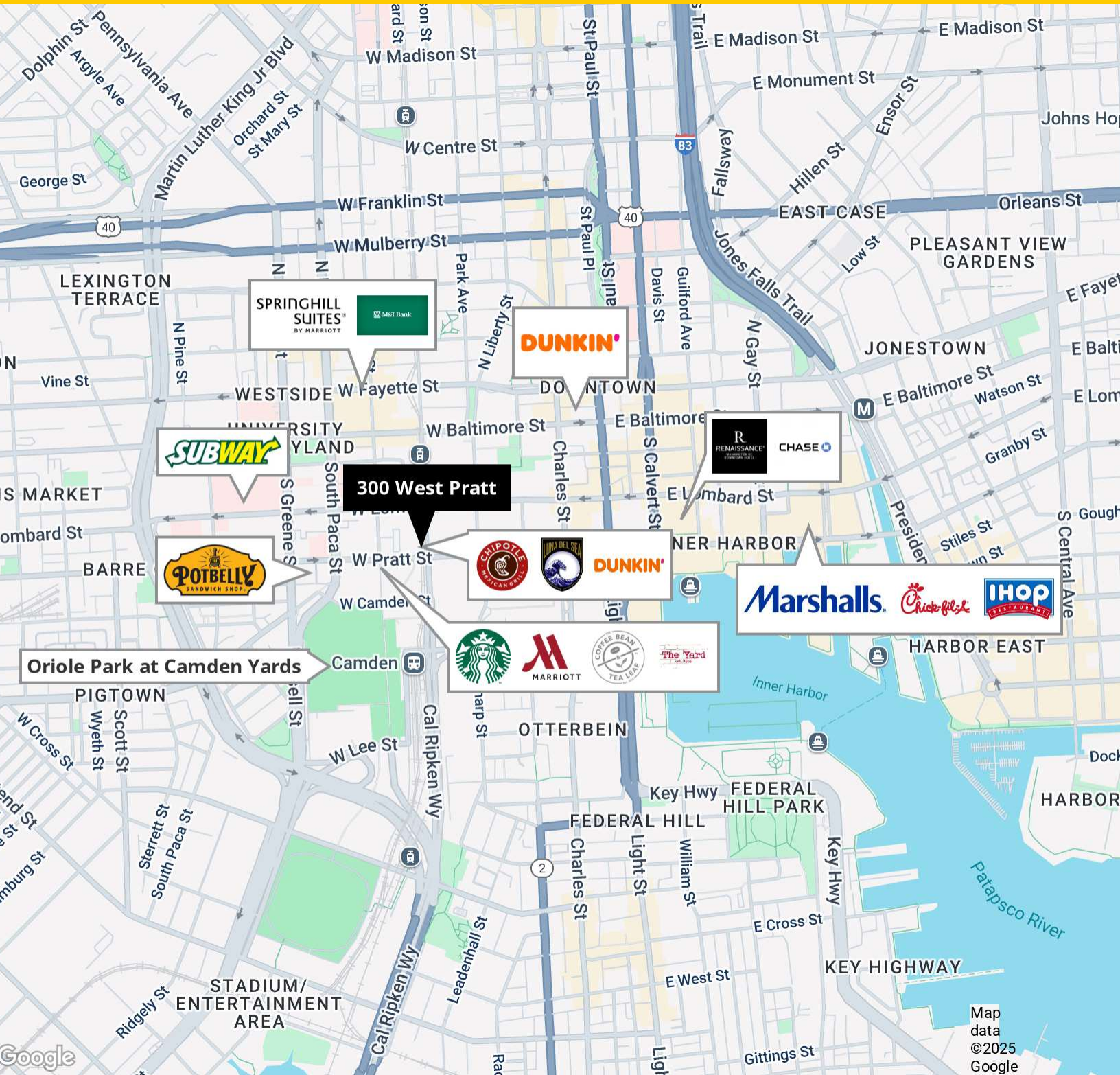
Lincoln

300 WEST PRATT STREET

Baltimore, MD 21201

Location Map

61,655 SF



Brent Prossner

410.659.1234 x122
bprossner@lpc.com

Kyle Bell

410.659.1234 x117
kbell@lpc.com

Lincoln



300 WEST PRATT STREET

Baltimore, MD 21201

Leasing Information:
410.659.1234

Brent Prossner
410.659.1234 x122
bprossner@lpc.com

Kyle Bell
410.659.1234 x117
kbell@lpc.com

Lincoln

Lincoln Property Company
300 W Pratt Street Suite 520
Baltimore, MD 21201

www.lpc.com