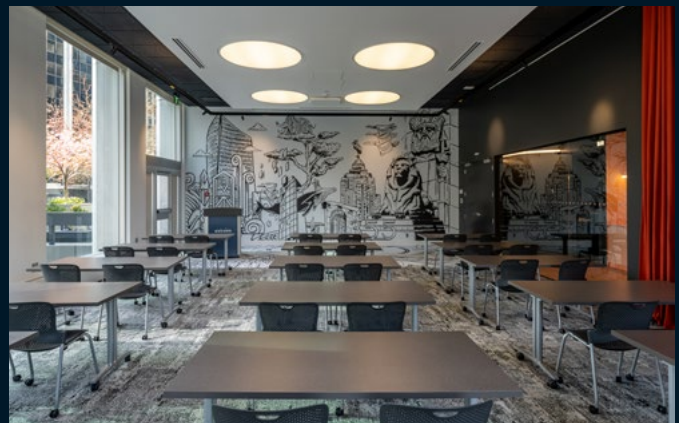
 **JLL** SEE A BRIGHTER WAY

For Sublease

Guinness Tower
1055 West Hastings Street
Suite 1620 - 3,015 s.f.

BUILDING & AMENITIES

Guinness Tower is prominently located in the heart of the Downtown Core and benefits from unparalleled amenities as part of the Oxford Place complex, including a fitness facility with change rooms that include lockers, laundry service and saunas, multiple bike storage facilities with laundry, conference rooms, a climbing wall, outdoor sport court, a corporate concierge and an abundance of on-site food and beverage options. The building is also a short walk from the Seawall, Burrard SkyTrain Station and Waterfront Station.



SALIENT DETAILS



SUITE 1620
3,015 s.f.



AVAILABILITY
Immediately



FLEXIBLE TERM
3-5 years



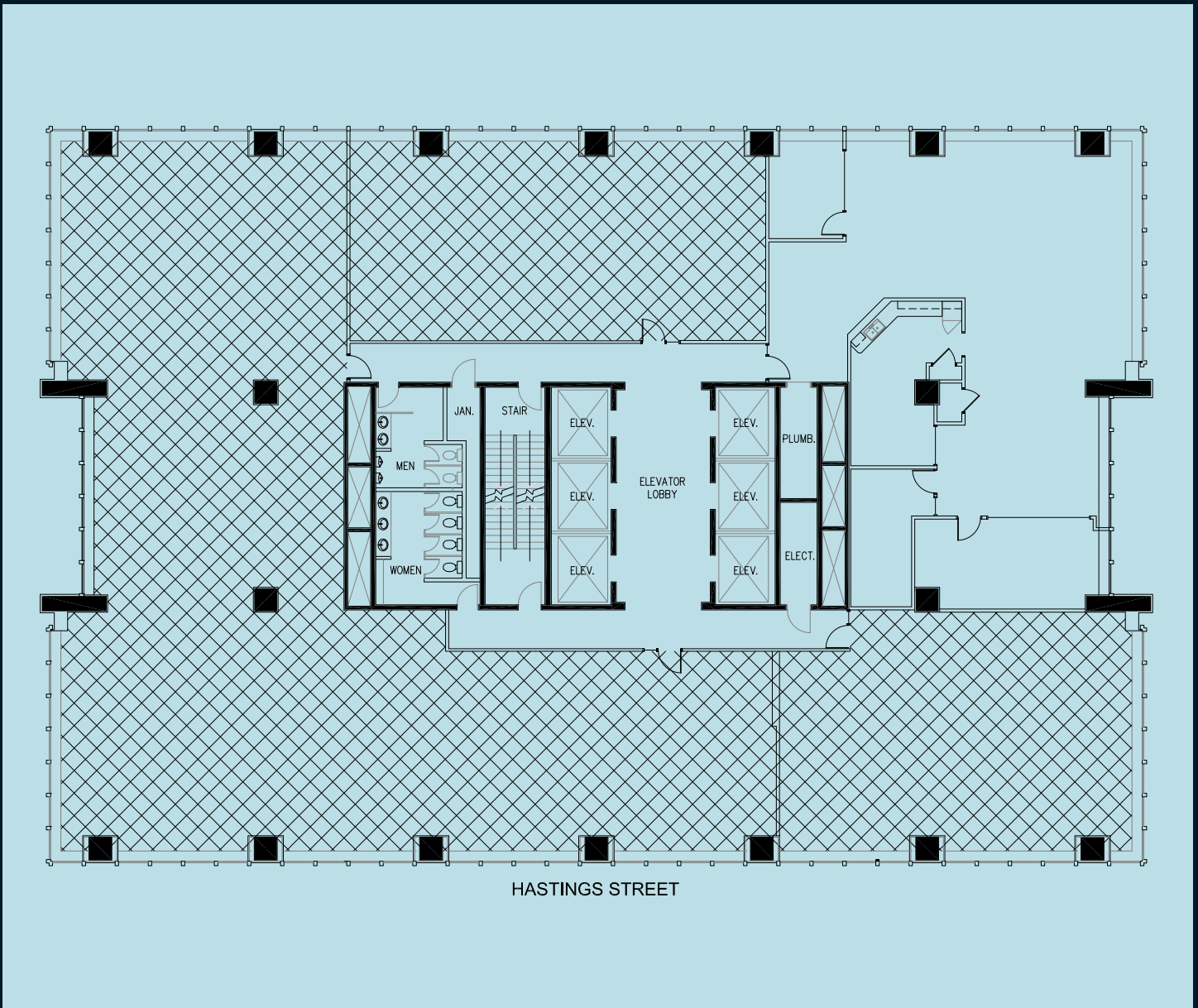
BASIC RENT
Contact listing agents



ADDITIONAL RENT
\$28.20 psf/pa (2026)


THE SUITE

Largely open space with one window office, one internal office, kitchen space, and boardroom. Excellent North-East facing unit with water and mountain views.







 **JLL** SEE A BRIGHTER WAY

Gavin Reynolds*

Executive Vice President

gavin.reynolds@jll.com

+1 604 998 6015

Graham Hyslop

Associate

graham.hyslop@jll.com

+1 604 354 7284

Although information contained herein has been obtained from sources deemed reliable, the owner, Jones Lang LaSalle Real Estate Services, Inc. ("JLL Canada"), and/or their representatives, brokers or agents make no guarantees as to the accuracy of the information contained herein, and offer the property/portfolio without express or implied warranties of any kind. The property/portfolio may be withdrawn without notice. If the recipient of this information has signed a confidentiality agreement regarding this matter, this information is subject to the terms of that agreement.