



.....  
**MADISON AVENUE**  
**P L A Z A**  
.....

**NEW AVAILABILITY  
FOR LEASE**

 **LEE &  
ASSOCIATES**  
COMMERCIAL REAL ESTATE SERVICES

**27270 AND 27290 MADISON AVENUE  
TEMECULA | CA 92590**

**PROFESSIONAL OFFICE SPACE FOR LEASE**



# MADISON AVENUE PLAZA

## PROPERTY HIGHLIGHTS:

- Madison Avenue Plaza is a prestigious class A office park that offers an impressive corporate atmosphere.
- Campus-style setting with mature landscaping.
- Excellent Interstate 15 freeway exposure.
- Freeway frontage signage available with 199,933 AADT (Regis 2023)
- Each building offers first-class finishes and elevator service.
- High speed data transfer available via fiber optics communications network
- Office suite available to be built out to fit tenant's needs
- Parking lot expansion project is completed!

An aerial photograph of the Madison Avenue Plaza area. The main building is a large, multi-story structure with a light-colored facade and several green-roofed sections. It is surrounded by a large parking lot filled with cars. In the background, there are rolling hills and other commercial buildings. A red trapezoidal overlay is placed over a section of the parking lot, indicating an 'SJVC Exclusive Parking Lot'.

# MADISON AVENUE PLAZA

**SJVC EXCLUSIVE  
PARKING LOT**

# MADISON AVENUE PLAZA

## AVAILABILITY

27270 MADISON AVENUE

FULLY LEASED

27290 MADISON AVENUE

SUITE 103

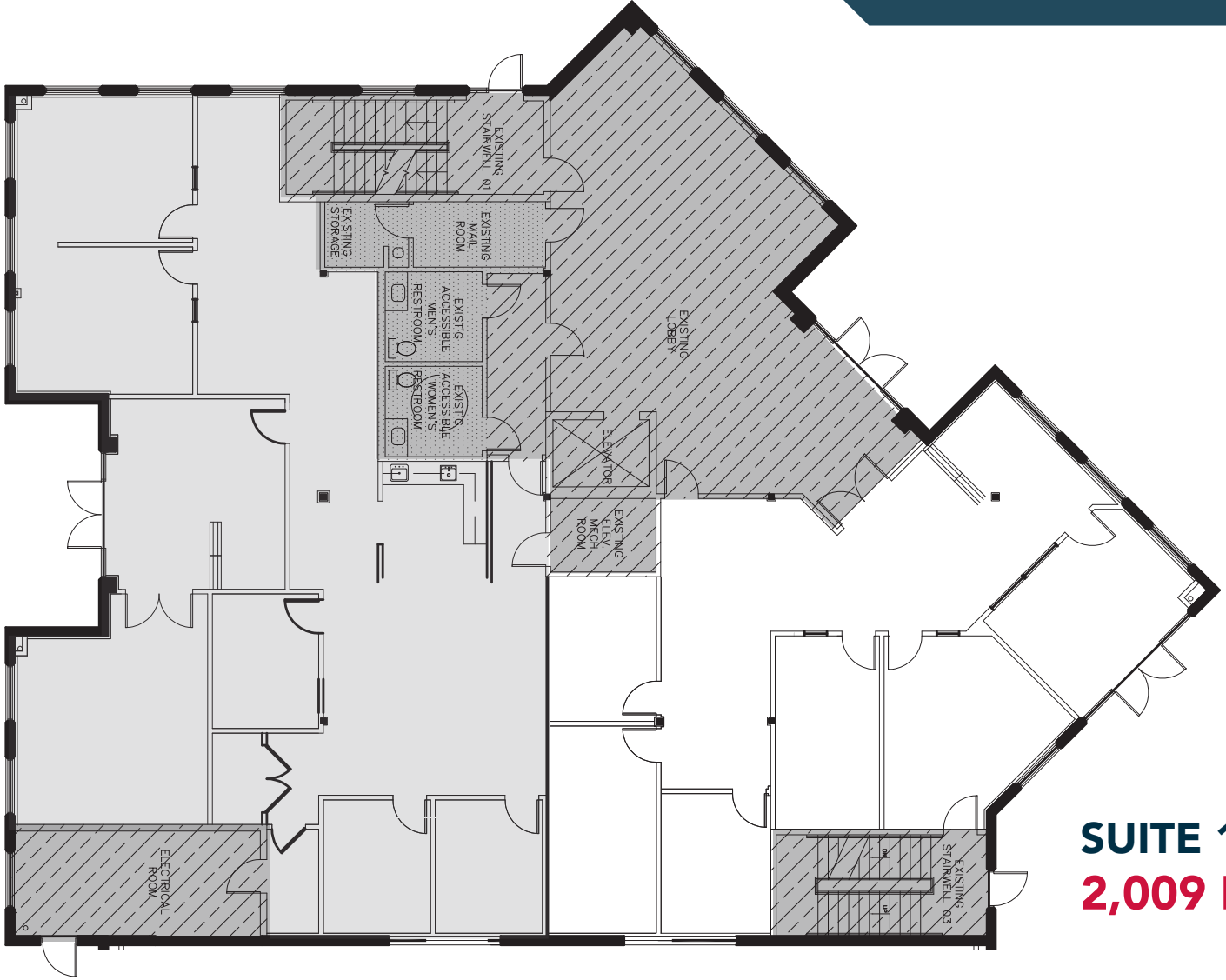
2,009 RSF    \$2.25 MG\*    Double door exterior entry, single door lobby entrance, 5 private offices, conference room  
Available with 30 days notice.

*Contact Broker for touring instructions.*

\*MG - (Net of Janitorial) Rate does not include Tenants in suite electricity.

**27290 MADISON AVENUE**  
**1ST FLOOR**

**MADISON AVENUE**  
**PLAZA**



**SUITE 103**  
**2,009 RSF**

MADISON AVENUE  
PLAZA

MADISON AVENUE



WINCHESTER RD



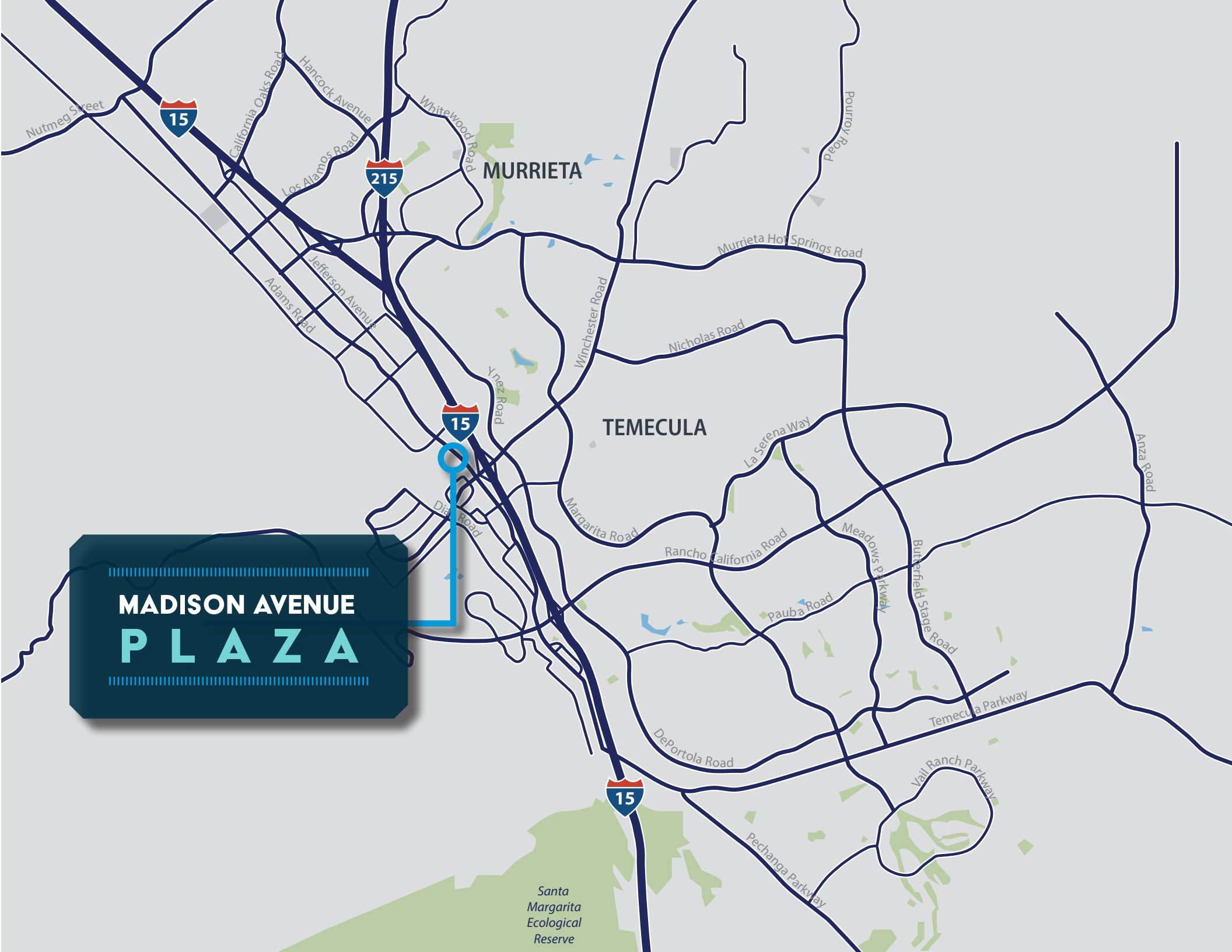
199,933 CPD

PROMENADE  
TERRAZZA

macy's	JCPenney	COSTCO WHOLESALE	Souplantation	CHIPOTLE MEXICAN GRILL	corner bakery CAFE	Puffs LOCO
NORDSTROM rack	KARL STRAUSS ESTERIE & COMPANY	REGAL OUTLET CENTER GRILLE	BARNES & NOBLE	PF CHANG'S CHINA	Lazy D DOG	
Apple	JO-ANN STORES INC.	WORLD MARKET	PIGALLEY PIZZERIA	Yard House	POTTERY BARNS	
PETCO Where the pets go.	organic roots	FIVE GUYS BURGERS and FRIES	DSW DESIGNER SHOE WAREHOUSE	WILLIAMS-SONOMA		
Total Wine & MORE	PACIFIC SALES LIVING, BATH & ELECTRONICS	SEPHORA	Office DEPOT Taking Care of Business	PARTY CITY The Discount Party Super Store!		

MADISON AVENUE  
PLAZA

MADISON AVENUE  
PLAZA



MURRIETA

TEMECULA

Santa  
Margarita  
Ecological  
Reserve



# MADISON AVENUE PLAZA







## PREMIER SOUTH WEST RIVERSIDE LOCATION

- Strategically situated at the convergence of the Interstate 215 and 15 freeways with direct access to the Orange County and Riverside County marketplaces (via I-15 and I-215 North) and the San Diego County marketplace (via I-15 South and Highway 78 West). Only 15 miles East of the Pacific Ocean and 4 miles South of the French Valley Airport.
- Old Town Temecula is 2.4 miles away and offers some of the area's best retail, restaurant, night-life and entertainment for the entire family. Additional area comforts include golf, resorts, wine country, Pechanga Resort and Casino and the Promenade Regional Mall.
- Pechanga Resort and Casino is under construction on a \$285 M expansion project which includes a new wing of hotel rooms, a resort-style pool complex, a large showroom designed to attract A-list stars, a huge new spa, two new restaurants and more space for special events.
- One of the fastest growing and centrally located business districts on the West Coast - The City of Temecula offers a cost-effective and business friendly environment and provides access to a highly skilled labor force, high-quality of living and a surplus of available affordable housing, making it a successful location for a wide variety of professional service firms and high technology companies.
- Affluent trade area demographics - average household incomes of \$90,224 in the 5-mile trade area and \$97,548 in the 3-mile trade area.
- Poised to benefit from the influence of growing technology and biotechnology companies, Temecula sees a strong future business growth potential.

Over the past two decades, the City of Temecula has evolved into a innovative, dynamic City and a regional economic center for Southwest Riverside County, all while retaining its small town feel and character. Many families began to move to the area from San Diego and Orange County drawn by the affordable housing prices and the popular wine country. Temecula is an affluent community. Supported by high median and mean income levels as well as the city's favorable tourist and resort industries, the city is a prominent tourist destination. Temecula remains the ideal city for relocating, expanding and developing a new project in Southern California.

The Temecula / Murrieta Twin Cities area has emerged as a center for job growth due to the migration of new residents to this are from neighboring San Diego. As is common in newly developing ares of Southern California, this and initially caused the growth of retail and other population - serving businesses to grow in the community. The City of Temecula - in conjunction with the City of Murrieta - have since begun to undertake a proactive joint program to attract additional high technology firms and advanced manufacturing firms to the Twin Cities area. These efforts have been supported by the proximity to San Diego, the high quality of life, the affordable housing, affordable land and buildings, the highly acclaimed school system, the well-educated work force as well as the moderating effect of the sea breezes passing over the mountains between Southwest Riverside County and San Diego compared to other inland areas.

## DEMOGRAPHICS

	3 Mile	5 Mile	10 Mile
 POPULATION	<b>79,643</b>	<b>184,308</b>	<b>357,564</b>
 MEDIAN HOUSEHOLD INCOME	<b>\$80,081</b>	<b>\$88,817</b>	<b>\$97,245</b>
 HIGH SCHOOL DEGREE OR HIGHER	<b>14,229</b>	<b>32,659</b>	<b>63,250</b>
 GRADUATE DEGREE OR HIGHER	<b>14,752</b>	<b>37,416</b>	<b>72,282</b>
 TOTAL EMPLOYEES	<b>57,989</b>	<b>79,692</b>	<b>99,287</b>
 TOTAL BUSINESSES	<b>7,333</b>	<b>10,018</b>	<b>12,789</b>



# MADISON AVENUE PLAZA

## **MATT SHAW, CCIM**

Vice President

951.445.4502

[mshaw@leetemecula.com](mailto:mshaw@leetemecula.com)

DRE# 01917622

## **BLAKE VALDEZ**

Vice President

951.445.4509

[bvaldez@leetemecula.com](mailto:bvaldez@leetemecula.com)

DRE# 02107941



No warranty or representation has been made to the accuracy of the foregoing information. Terms of sale or lease and availability are subject to change or withdrawal without notice. Lee & Associates Commercial Real Estate Services, Inc. - Riverside. 25240 Hancock Avenue, Suite 100 - Murrieta, CA 92562 | Corporate ID# 01048055