



OFFICE BUILDING FOR LEASE

CHESTERMAN PLACE

100 WEST FRANKLIN STREET, RICHMOND, VA 23220



CHESTERMAN PLACE

100 WEST FRANKLIN STREET, RICHMOND, VA 23220

PROPERTY OVERVIEW



OFFERING SUMMARY

Available SF:	848 - 4,310 SF
Lease Rate:	\$16.50 - 18.50 SF/yr (Full Service)
Building Size:	36,988 SF

AVAILABLE SPACES **SF**

Lower Level	4,310 SF Can be subdivided
Suite 302	848 SF

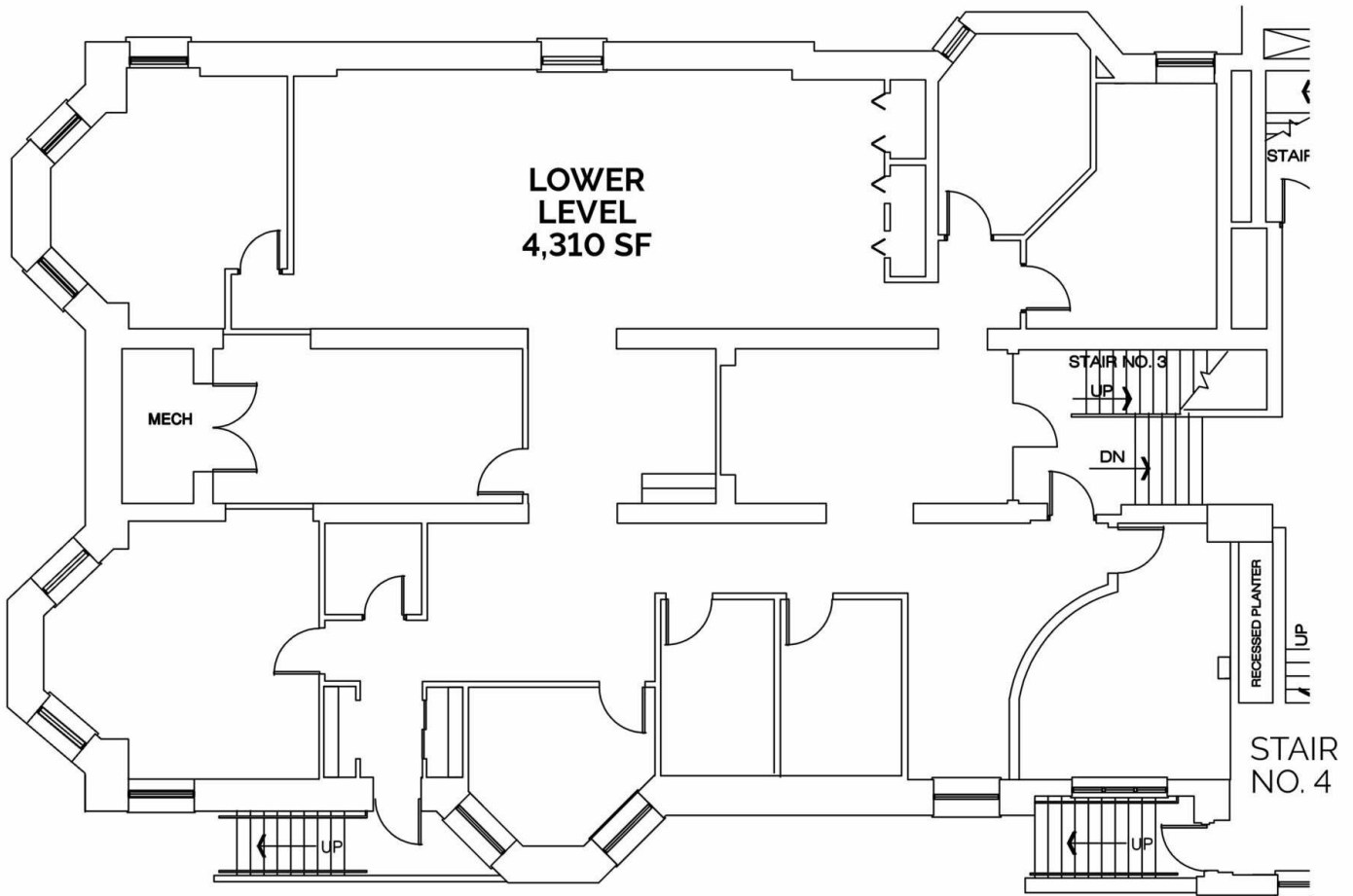
PROPERTY HIGHLIGHTS

- Historic building at one of Richmond's most prestigious business addresses
- Class A Buildout with a spectacular view of the Jefferson Hotel
- Ample nearby parking and easy access onto I-95, I-64 and Downtown Expressway
- Convenient to the VCU Campus and State Capitol and within walking distance are the YMCA, Library and many of downtown Richmond's finest restaurants
- Competitive rental rates and flexible lease terms

CHESTERMAN PLACE

100 WEST FRANKLIN STREET, RICHMOND, VA 23220

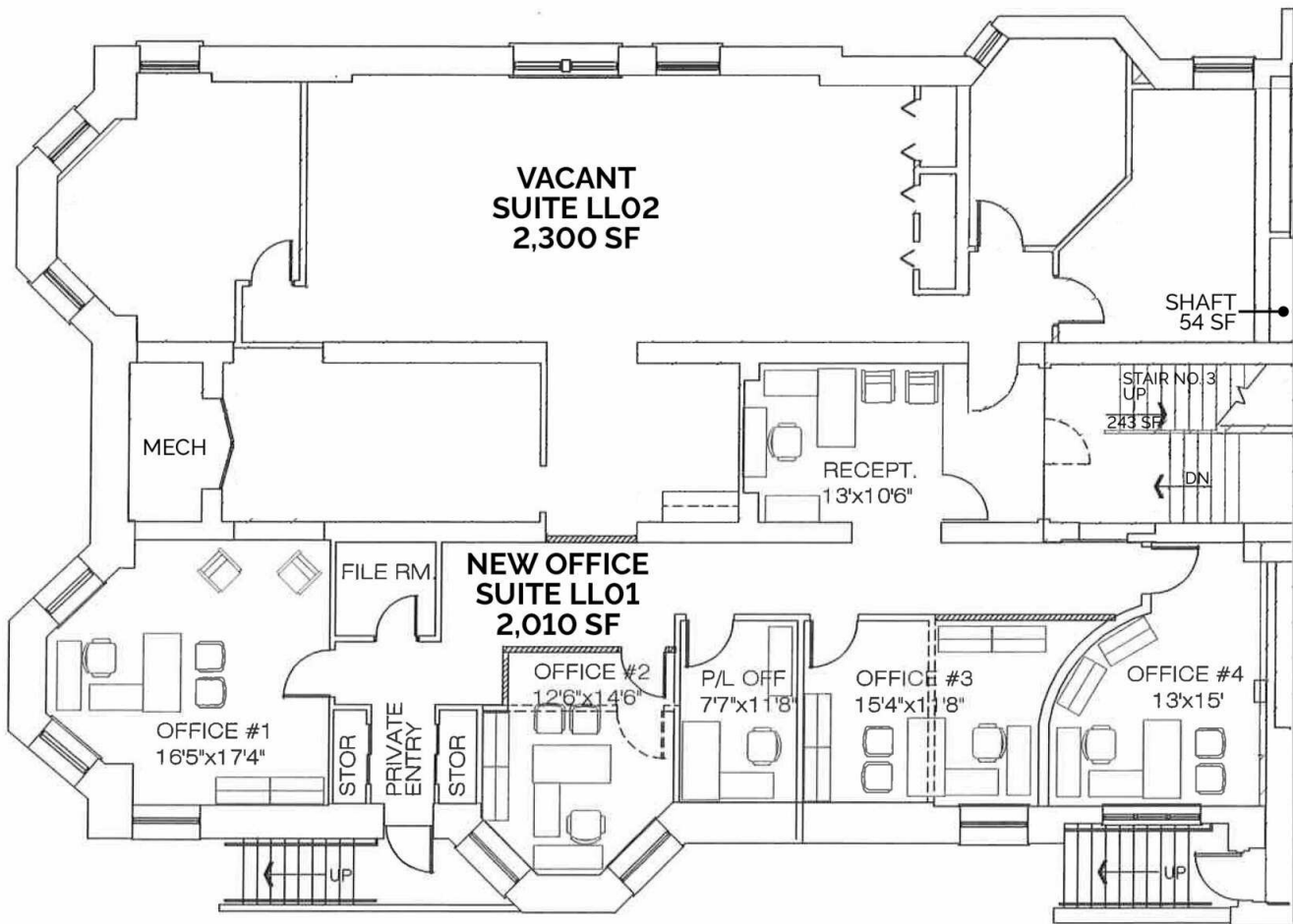
LOWER LEVEL | 4,310 SF



CHESTERMAN PLACE

100 WEST FRANKLIN STREET, RICHMOND, VA 23220

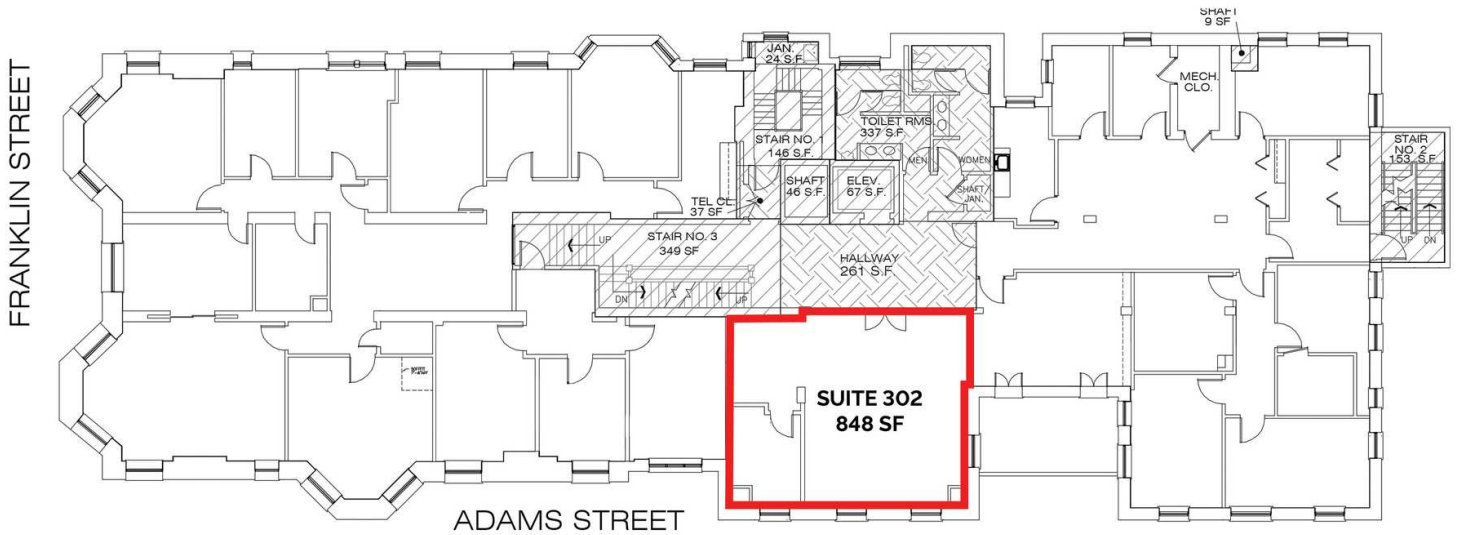
LOWER LEVEL | 4,310 SF (CAN BE SUBDIVIDED)



CHESTERMAN PLACE

100 WEST FRANKLIN STREET, RICHMOND, VA 23220

THIRD FLOOR

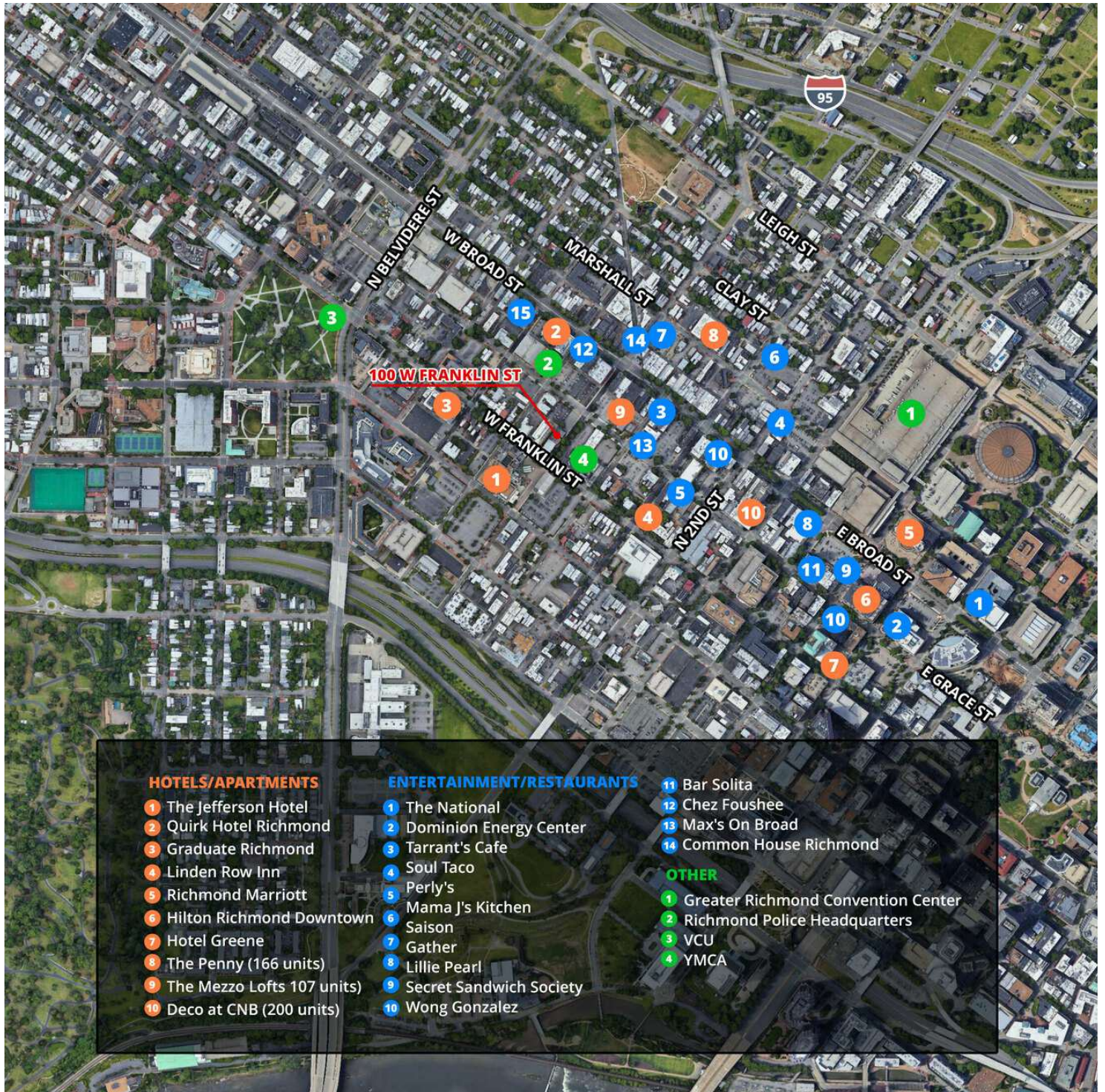


THIRD FLOOR

CHESTERMAN PLACE

100 WEST FRANKLIN STREET, RICHMOND, VA 23220

LOCAL AREA



CHESTERMAN PLACE

100 WEST FRANKLIN STREET, RICHMOND, VA 23220

PARKING LOCATIONS



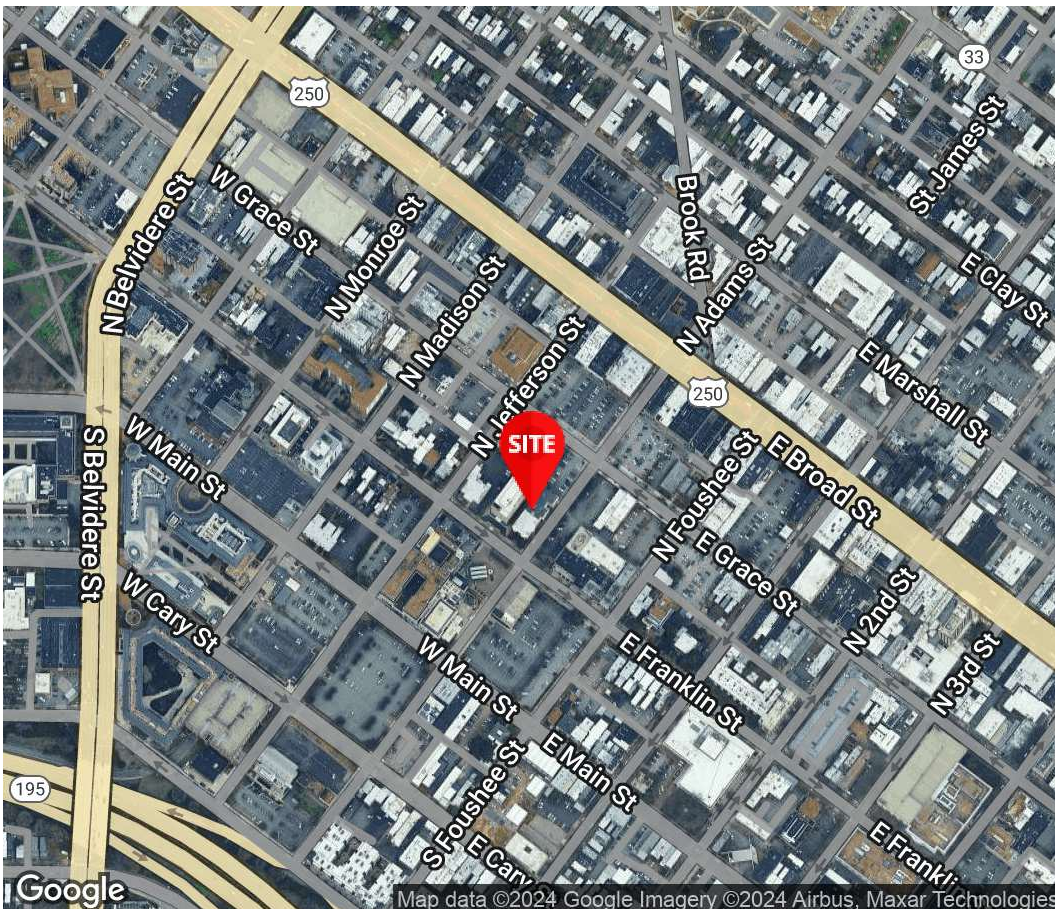


Chris Messersmith

Associate

804.616.3434

Chris.Messersmith@Divaris.Com



The information contained herein should be considered confidential and remains the sole property of Divaris Real Estate, Inc. at all times. Although every effort has been made to ensure accuracy, no liability will be accepted for any errors or omissions. Disclosure of any information contained herein is prohibited except with the express written permission of Divaris Real Estate, Inc.