



WEST ROXBURY, MA

1804 CENTRE STREET

±10,065 SF AVAILABLE FOR LEASE



PROJECT DETAILS

1804 CENTRE STREET • ±10,065 SF AVAILABLE FOR LEASE



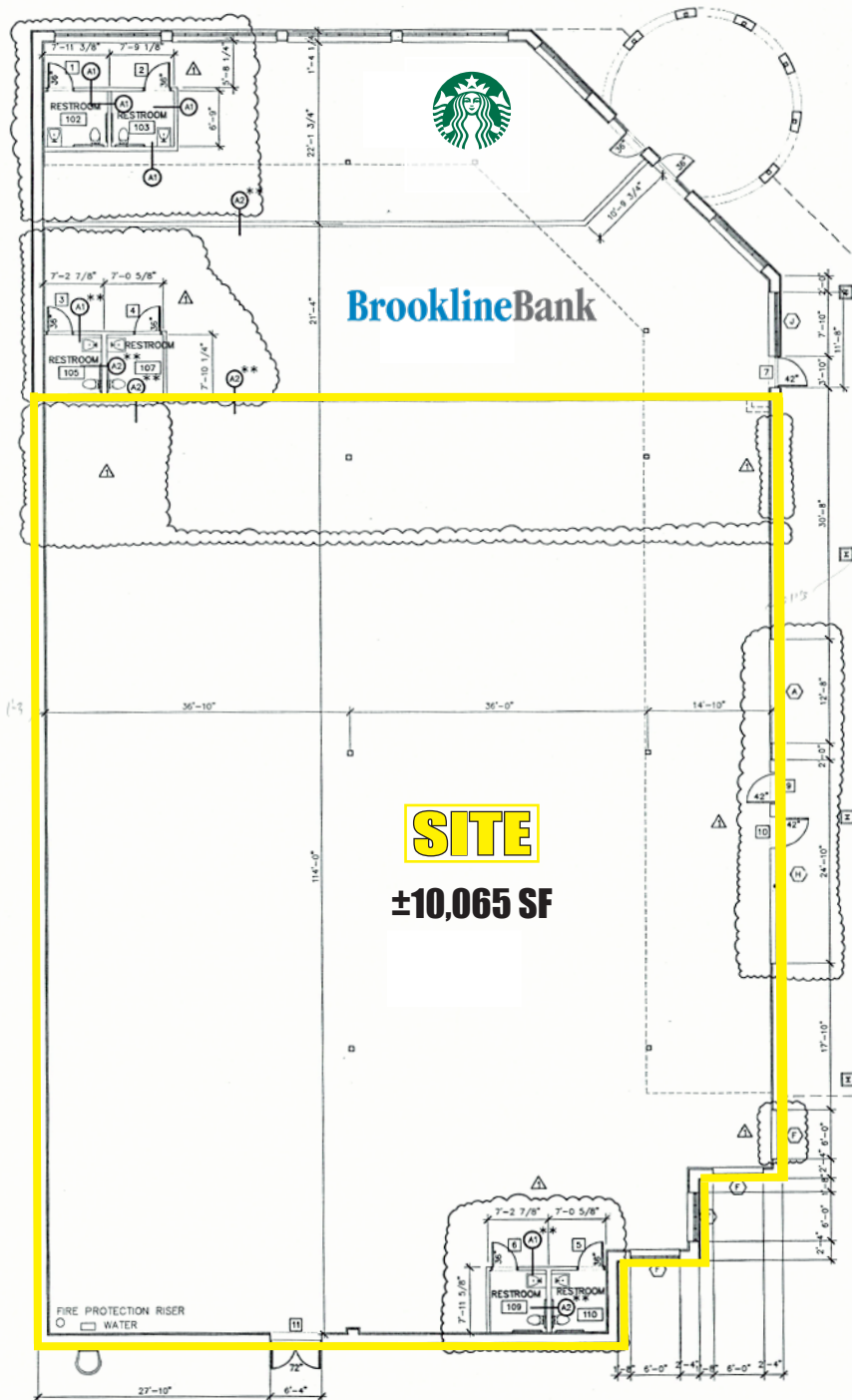
PROPERTY HIGHLIGHTS

- ± 10,065 SF available for lease
- Parking ratio: 5 / 1,000 SF
- Full signalized access
- Join Roche Bros. Supermarket, Brookline Bank, and Starbucks
- Local retailers include Citizens Bank, Santander, Chase Bank, CVS, Roche Bros., True Value, Planet Fitness
- 0.1 miles from Highland MBTA station – 394 inbound riders/day
- 22,716 ADT on Centre Street

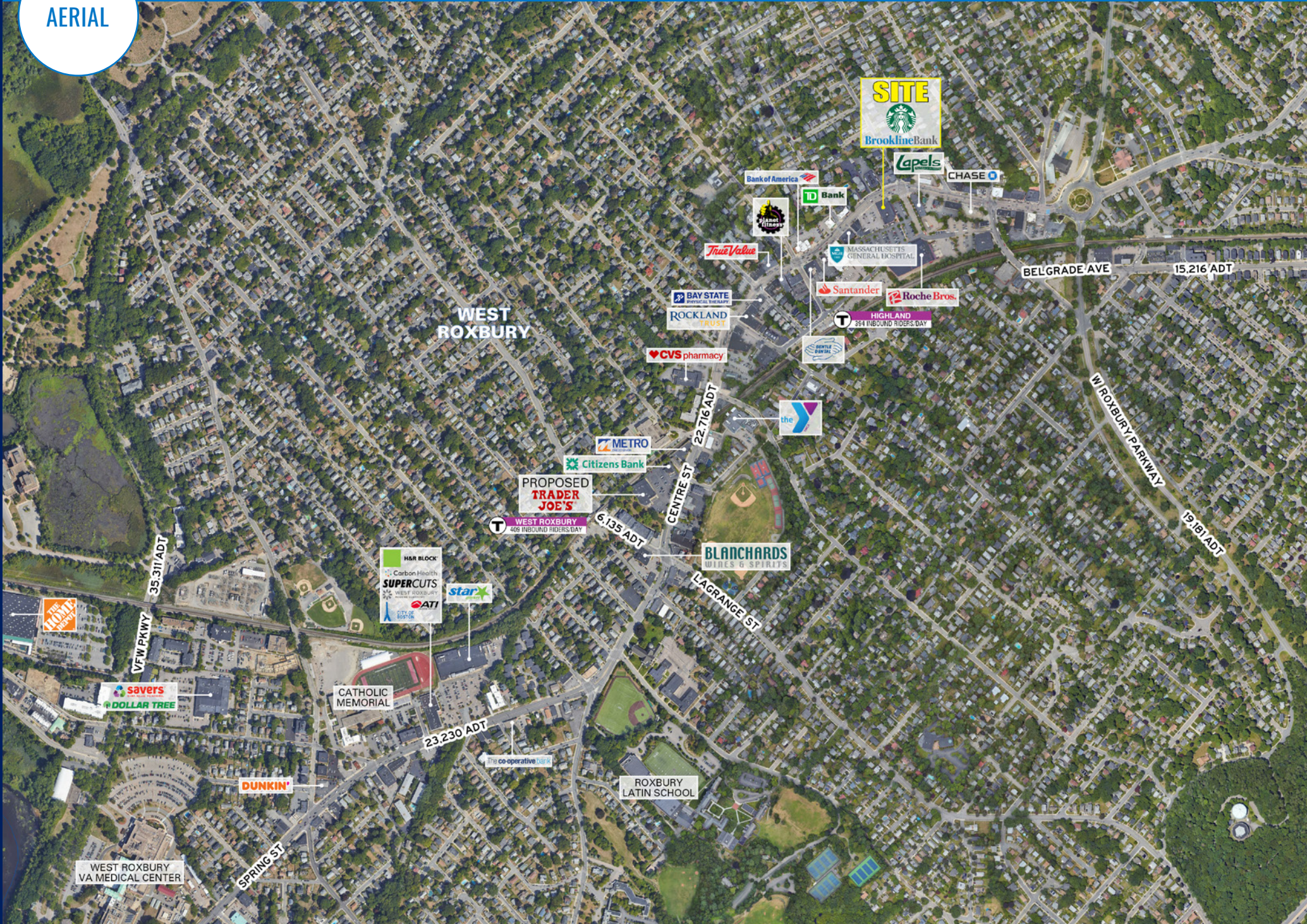
DEMOGRAPHICS	1 MILE	2 MILES	3 MILES
TOTAL POPULATION	25,154	71,931	143,325
MEDIAN HH INCOME	\$141,811	\$118,262	\$116,746
DAYTIME POPULATION	18,182	60,783	126,301

FLOOR PLAN

1804 CENTRE STREET • ±10,065 SF AVAILABLE FOR LEASE



AERIAL



WEST ROXBURY, MA

1804 CENTRE STREET

±10,065 SF AVAILABLE FOR LEASE

SCOTT BLACK

617.396.5902
SBLACK@ATLANTICRETAIL.COM

JACK LYMAN

860.391.1736
JLYMAN@ATLANTICRETAIL.COM



BOSTON
THE PRUDENTIAL CENTER
BOSTON, MA 02199
617.239.3600

ALBANY

ATLANTA

CHARLOTTE

LOS ANGELES

NEW YORK CITY

ORLANDO

PITTSBURGH

WEST PALM BEACH

WWW.ATLANTICRETAIL.COM

 [LINKEDIN.COM/COMPANY/ATLANTIC-RETAIL-PROPERTIES](https://www.linkedin.com/company/atlantic-retail-properties)
 [INSTAGRAM.COM/ATLANTIC_RETAIL/](https://www.instagram.com/atlantic_retail/)