

MAIN & SECOND FLOOR CAN BE LEASED TOGETHER



11803 114 Avenue, Edmonton

Retail/Office Space



PROPERTY DETAILS

Address:	11803 114 Avenue, Edmonton
Zoning:	CBI - Low-Intensity Business
Main Floor Size:	1,212 SF (+/-)
Second Floor Size:	1,500 SF (+/-)
Lease Rate:	Contact Associate
Op Costs:	\$12.00 / SF (TBC)
Possession:	Immediate



PROPERTY HIGHLIGHTS

- INITIA SQUARE - New commercial building with only 2 vacancies left
- Free Rent and Fixturing Period negotiable
- Main floor high exposure corner unit ideal for a cafe or specialty food service
- Second floor office space ideal for professional medical or personal services
- Elevator access to second floor
- Quick access to major thoroughfares including 111 Avenue, Kingsway, 124 Street, Groat Road and St. Albert Trail
- Existing businesses include: Sumolash Eyelash Extensions, Bhakti Massage, Primetime Signs, Initia Real Estate and St. Mark James First Aid



Erin Oatway
Partner / Associate
780-218-7585
erin@aicrecommercial.com

Jim McKinnon
Broker / Partner
780-719-8183
jim@aicrecommercial.com

MAIN FLOOR

11803 114 Avenue, Edmonton

Neighbourhood features:



PROPERTY DETAILS

Address:	11827 114 Avenue, Edmonton
Zoning:	CB1 - Low-Intensity Business
Main Floor Size:	1,212 SF (+/-)
Lease Rate:	Contact Associate
Op Costs:	\$12.00 / SF (TBC)
Possession:	Immediate
Parking:	Ample scramble parking
Utilities:	Separately metered for each unit
HVAC:	Rooftop unit
Washroom:	Rough-in



Erin Oatway
Partner / Associate
780-218-7585
erin@aicrecommercial.com

Jim McKinnon
Broker / Partner
780-719-8183
jim@aicrecommercial.com

SECOND FLOOR

11803 114 Avenue, Edmonton

Neighbourhood features:



PROPERTY DETAILS

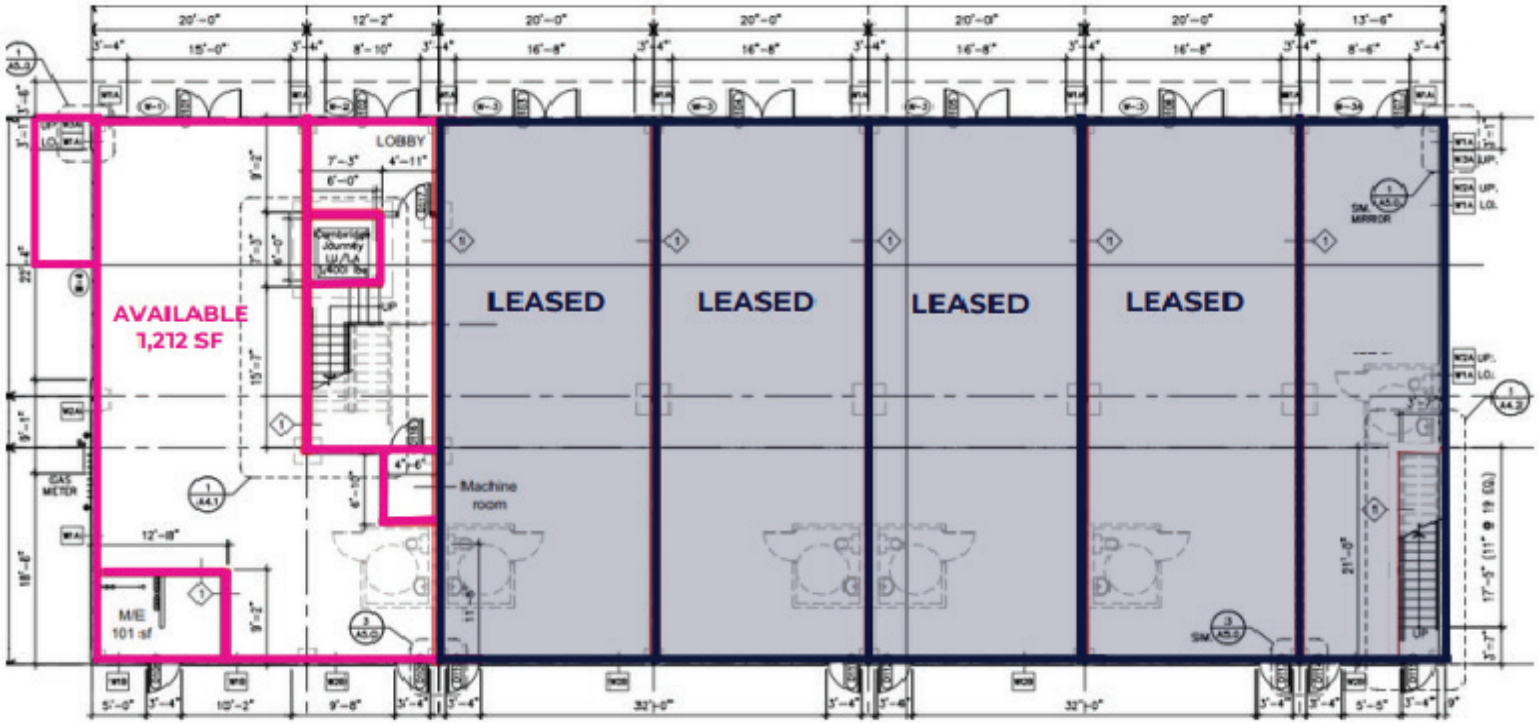
Address:	11827 114 Avenue, Edmonton
Zoning:	CB1 - Low-Intensity Business
Second Floor Size:	1,500 SF (+/-)
Lease Rate:	Contact Associate
Op Costs:	\$12.00 / SF (TBC)
Possession:	Immediate
Parking:	Ample scramble parking
Utilities:	Separately metered for each unit
HVAC:	Rooftop unit
Washroom:	Rough-in



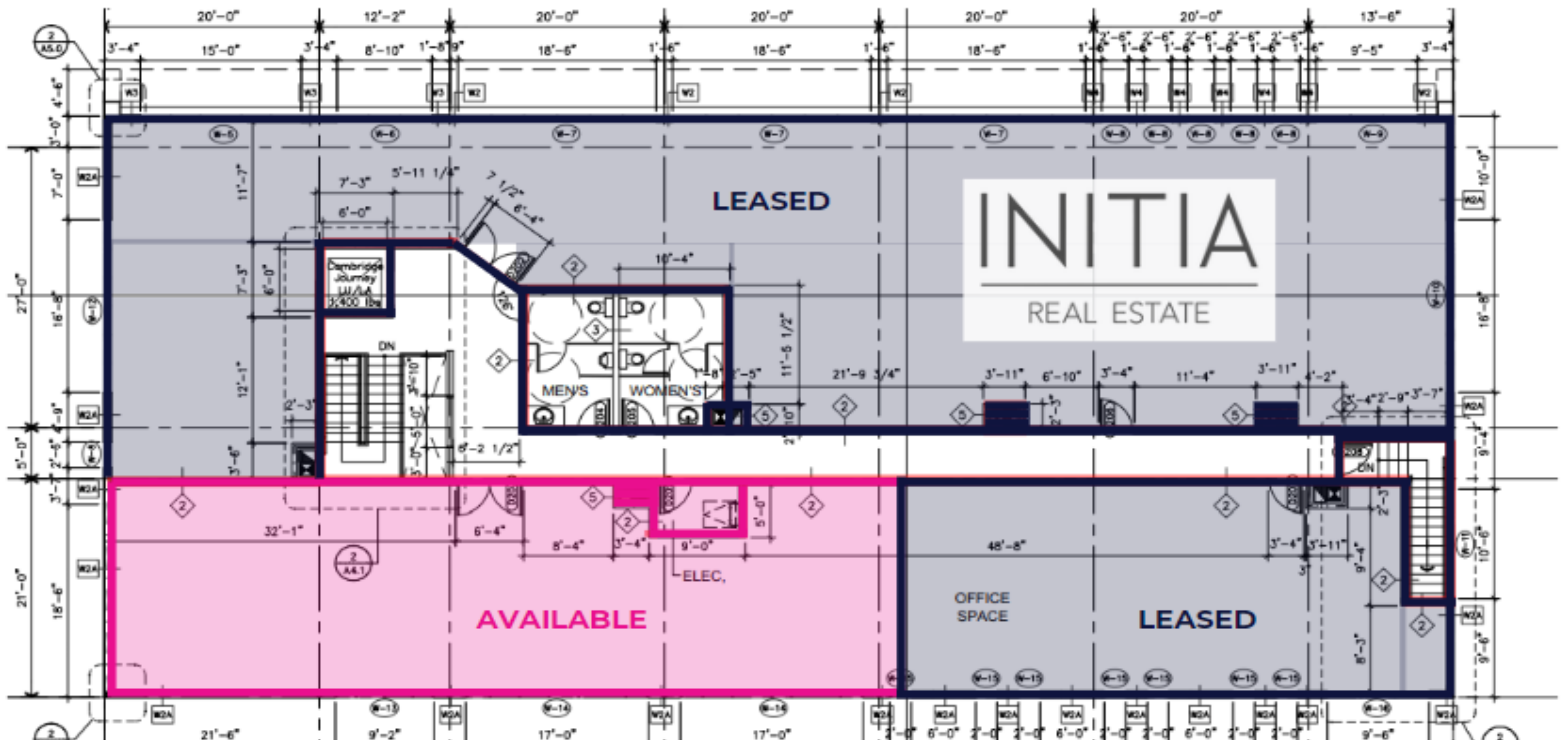
Erin Oatway
Partner / Associate
780-218-7585
erin@aicarecommercial.com

Jim McKinnon
Broker / Partner
780-719-8183
jim@aicarecommercial.com

MAIN FLOOR



SECOND FLOOR





DRIVE TIMES

- Kingsway Mall: 4 Minutes
- Downtown Core: 10 Minutes
- Oliver Square: 7 Minutes
- 124th Street: 8 Minutes

VEHICLES PER DAY

- 119 Street: 9,700 (+/-) VPD
- 111 Avenue: 23,200 (+/-) VPD
- Kingsway NW: 28,700 (+/-) VPD

AREA INCOME

- Average household income \$85,209

AREA POPULATION

- 109,011 Daytime Population

LOCATION FEATURES

- Central location in the sought-after Inglewood neighborhood, offering easy access to downtown Edmonton.
- Proximity to major roads like 124 Street, Kingsway, and Groat Road, providing convenient connectivity throughout the city.
- Established commercial and residential area, with a mix of retail shops, restaurants, and residential properties nearby.
- Close to Edmonton's core attractions, including Kingsway Mall, Royal Alexandra Hospital, and the new Blatchford community.
- Transit-friendly location with access to public transportation, making it easily accessible for employees and clients.



Erin Oatway
Partner / Associate
780-218-7585
erin@aicrecommercial.com

Jim McKinnon
Broker / Partner
780-719-8183
jim@aicrecommercial.com

Disclaimer: This disclaimer applies to AICRE COMMERCIAL. The information set out, including, without limitation, any projections, images, opinions, estimates or assumptions obtained from third parties has not been verified, and AICRE COMMERCIAL does not guarantee or represent the accuracy or completeness of the information. The recipient of the information should take steps they deem necessary to verify