



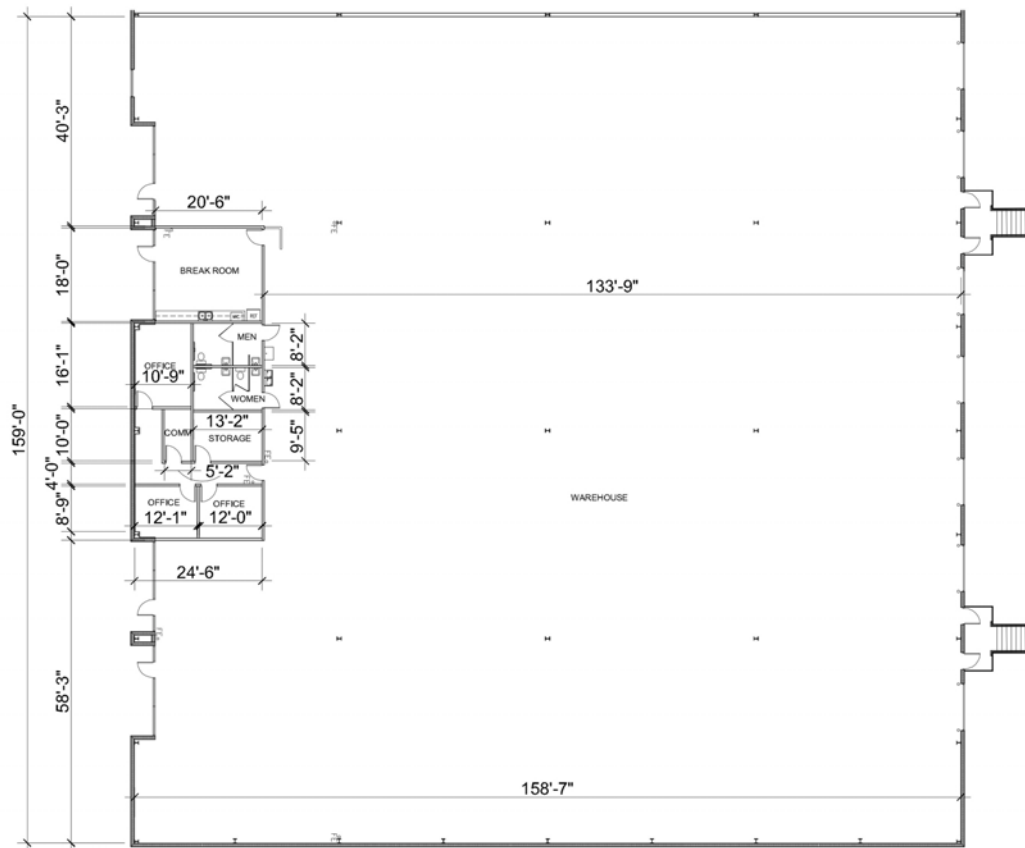
SUITE 1758 - 25,600 s.f.

For lease

Poinciana CommerCenter West
1750 Business Center Lane, Kissimmee, FL 34758

Property specifications

Building size	49,920 s.f.	Clear height	24'	Parking ratio	1.66/1,000 s.f.
Available s.f.	25,600 s.f.	Loading	Rear	Zoning	PCD, Osceola County
Office s.f.	1,388 s.f.	Sprinklers	0.295/2,000 s.f. density	Available	June 1, 2026
Loading doors	6 docks; 1 ramp	Year built	2008	Lease rate	\$10.95/s.f. NNN



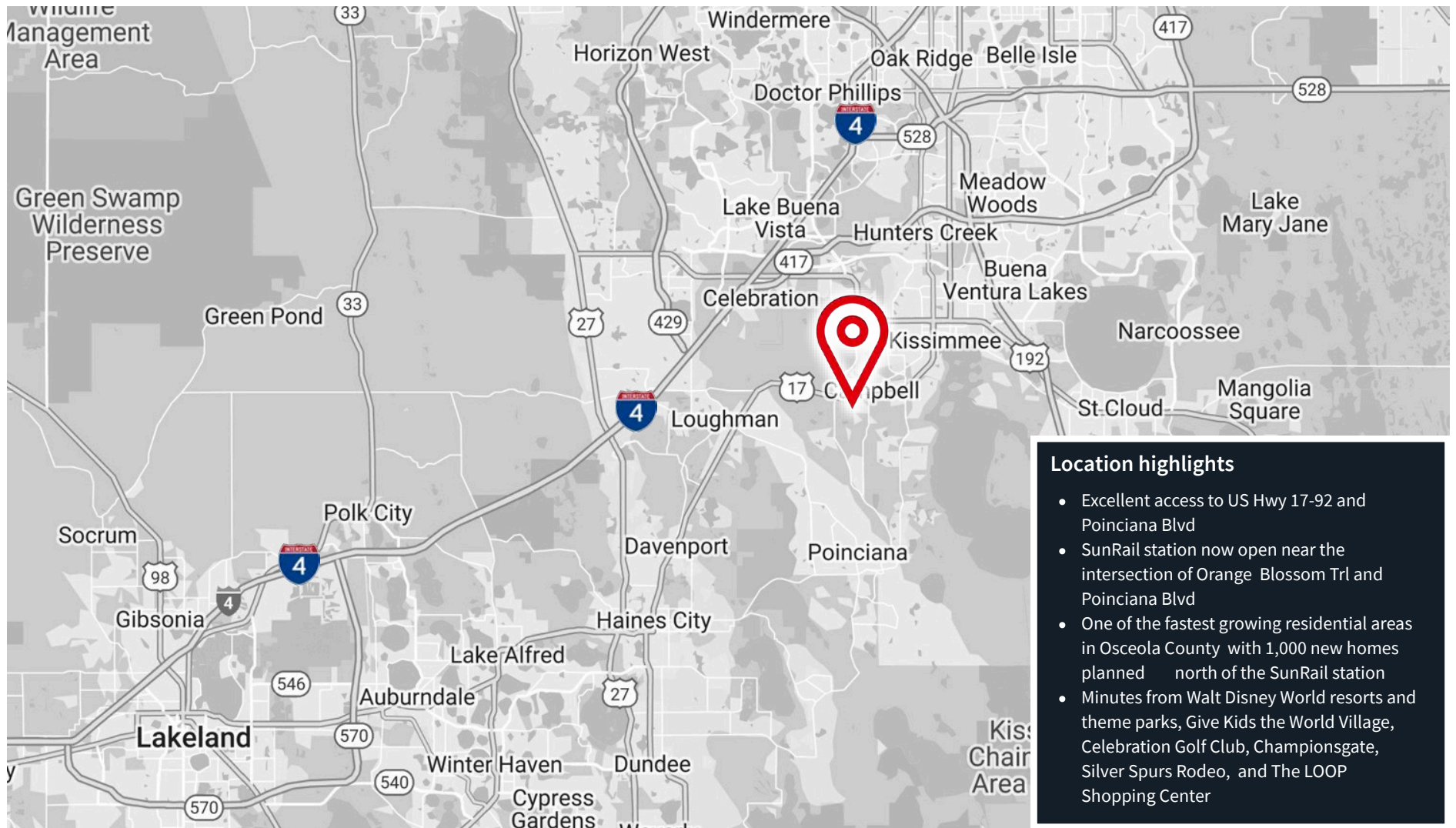
Property photos



Area amenities



Location



JLL

Cameron Montgomery

Executive Vice President

Cameron.Montgomery@jll.com

+1 407 982 8650