



**19830**  
LAKE CHABOT ROAD  
**MEDICAL OFFICE SUITES**  
MANAGED BY  
STARRIDGE LLC

ENTER ONLY

# AVAILABLE FOR LEASE

**976±SF - 1,128±SF MEDICAL OFFICE SUITES**

19830 LAKE CHABOT ROAD, CASTRO VALLEY, CA 94546

LOCAL EXPERTISE. INTERNATIONAL REACH. WORLD CLASS.

**Mark Rinkle**

Principal

[mrinkle@lee-associates.com](mailto:mrinkle@lee-associates.com)

925-737-4145

LIC NO 01512632

**Kirsten Johnsen**

Associate

[kjohnsen@lee-associates.com](mailto:kjohnsen@lee-associates.com)

925-519-7818

LIC NO 02133540

PROPERTY HIGHLIGHTS



Professional three-story Medical Office Building



Suite A: ±1,128 SF - 1<sup>st</sup> Floor Suite  
Suite C: ±1,128 SF - 2<sup>nd</sup> Floor Suite  
Suite D: ±976 SF - 2<sup>nd</sup> Floor Suite

\*All suites equipped with basement storage



Elevator service to all floors



On-site patient and staff parking



Professionally maintained property



Near major commuter routes including I-580, I-680 and SR-238,  
covenant access to greater Oakland, San Leandro, and Hayward areas



Directly across from Sutter Health Medical Center



Surrounded by dense residential neighborhoods and healthcare services



Lease rate: Contact Brokers

19830  
LAKE CHABOT ROAD

FLOOR PLAN - FIRST FLOOR



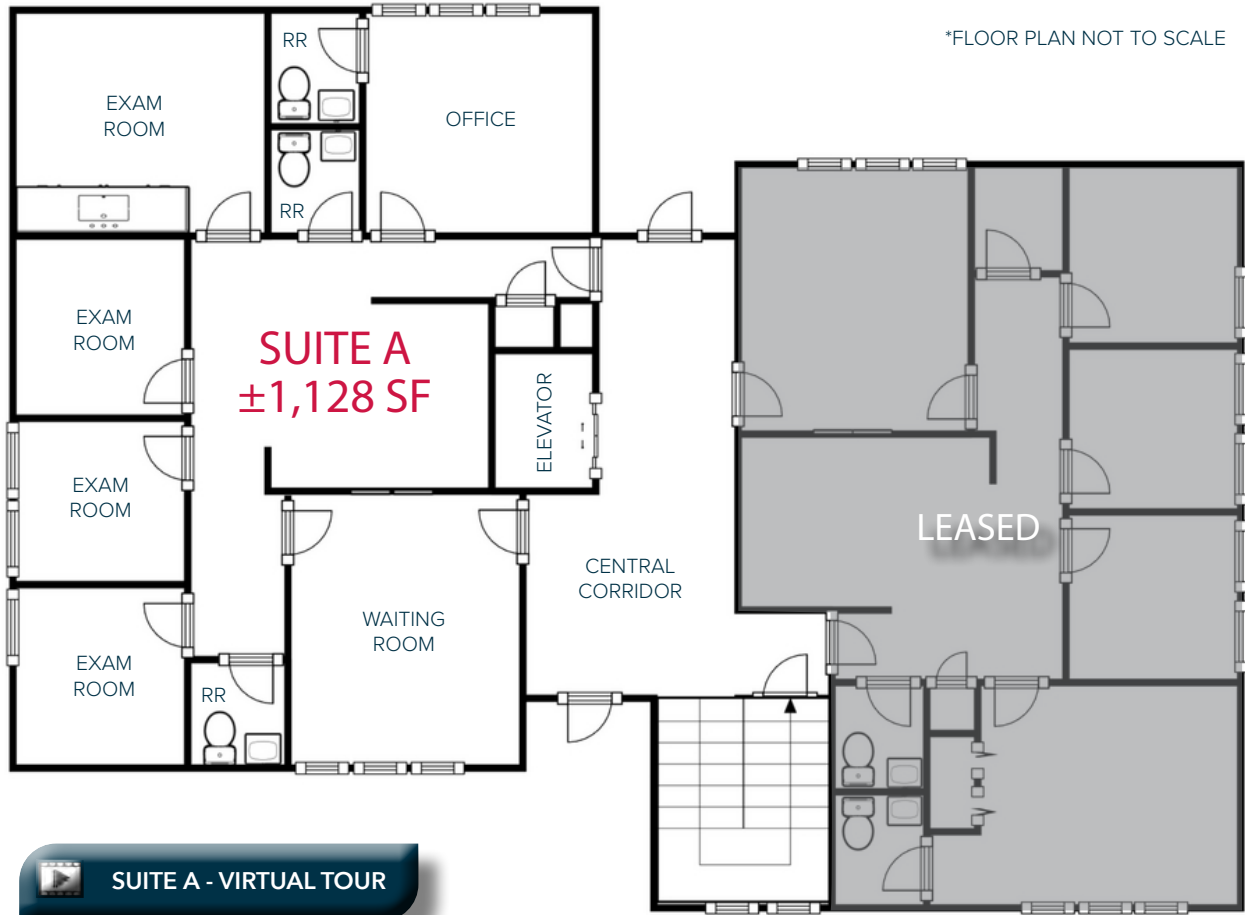
RECEPTION AREA



WAITING ROOM



OFFICE



EXAM ROOM



PROCEDURE ROOM

 SUITE A - VIRTUAL TOUR

FLOOR PLAN - SECOND FLOOR



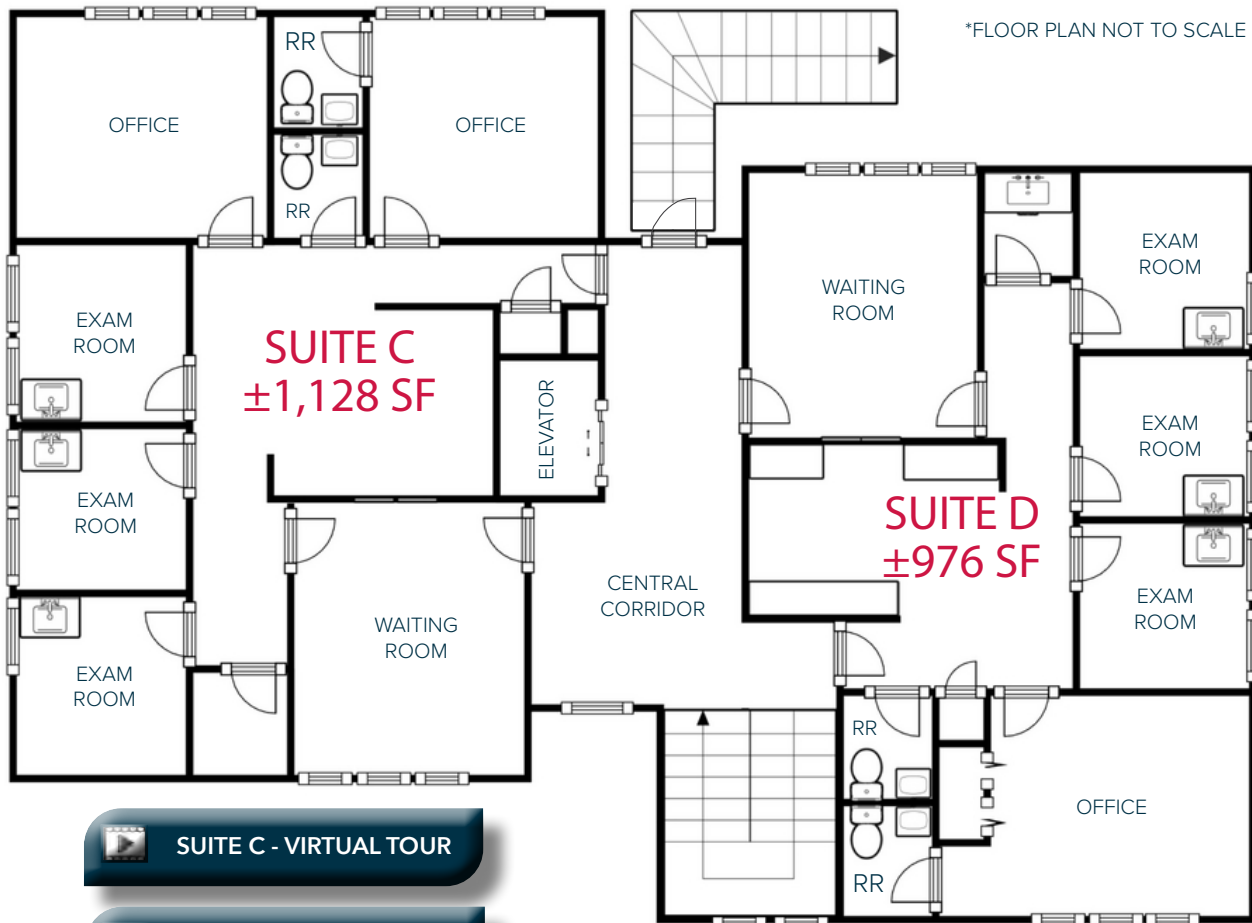
SUITE C - WAITING ROOM



SUITE C - OFFICE



SUITE C - EXAM ROOM



 SUITE C - VIRTUAL TOUR

 SUITE D - VIRTUAL TOUR



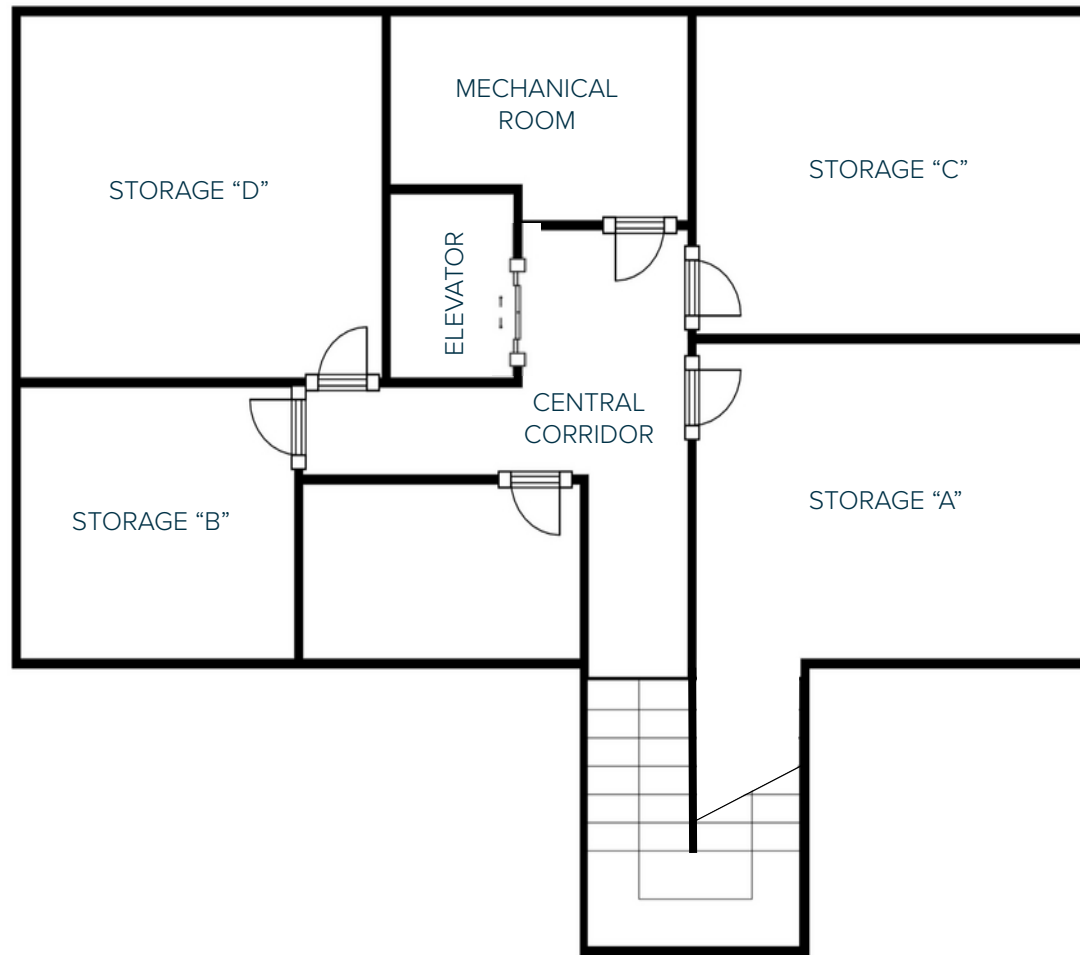
SUITE D - RECEPTION AREA



SUITE D - EXAM ROOM

FLOOR PLAN - BASEMENT

- Storage A: approximately ±180 SF
- Storage B: approximately ±119 SF
- Storage C: approximately ±199 SF
- Storage D: approximately ±196 SF



\*FLOOR PLAN NOT TO SCALE

19830  
LAKE CHABOT ROAD



GROUND FLOOR HALLWAY



2ND FLOOR HALLWAY



REAR PARKING LOT



STAIR ACCESS



NORTH SIDE ENTRANCE

# FOR LEASE

976±SF - 1,128±SF MEDICAL OFFICE SUITES AVAILABLE

19830 LAKE CHABOT ROAD, CASTRO VALLEY, CA 94546



**Mark Rinkle**

Principal  
mrinkle@lee-associates.com  
925-737-4145  
LIC NO 01512632



**Kirsten Johnsen**

Associate  
kjohnsen@lee-associates.com  
925-519-7818  
LIC NO 02133540

All information furnished regarding property for sale, rental or financing is from sources deemed reliable, but no warranty or representation is made to the accuracy thereof and same is submitted to errors, omissions, change of price, rental or other conditions prior to sale, lease or financing or withdrawal without notice. No liability of any kind is to be imposed on the broker herein.

Lee & Associates® East Bay, Inc. Corp. ID 01194869 5000 Pleasanton Ave, Suite 220, Pleasanton, CA 94566

LEE-ASSOCIATES.COM

**19830**  
**LAKE CHABOT ROAD**