

Transformer vault below. No through floor penetrations allowed within this area.

# RETAIL 4

EL : 69.36 TOF  
 EL : 69.19 TOS  
 AREA : 2,176 SF  
 +/- 16.62' to underside of structure

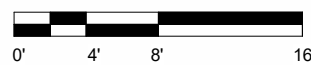
74' - 1"

25' - 2"

Trash and loading access

Additional egress access

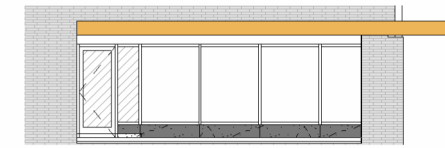
Note: All through floor penetrations and other modifications to the concrete floor slab MUST be reviewed by the project Structural Engineer of record



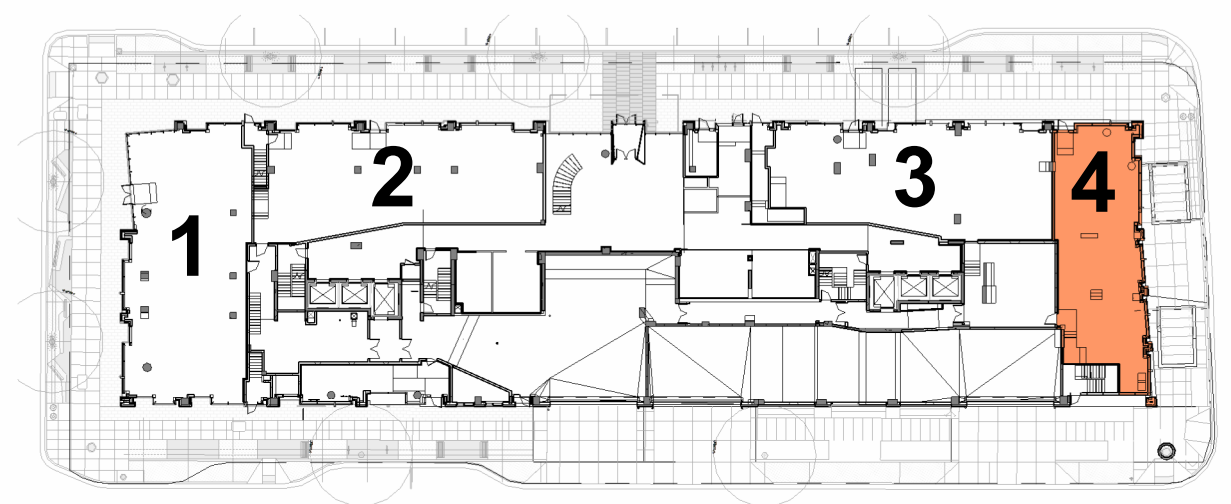
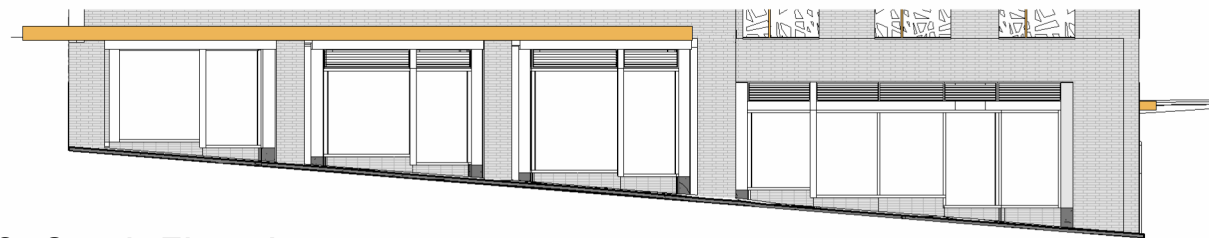
1. East Elevation



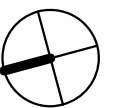
2. West Elevation



3. South Elevation



Retail Space Key Plan NTS



1950 N LYNN ST

RETAIL 4 | LOD\_4a