
21 West 86 Street

UPPER WEST SIDE
NEW YORK, NY



Property Details

Location

North block between Columbus Avenue and Central Park West

Approximate Size

Ground Floor

Space A 2,707 RSF—LEASED

Space B 4,986 RSF

Ceiling Height

12-15 FT

Term

Negotiable

Possession

Immediate

Site Status

Vacant

Neighbors

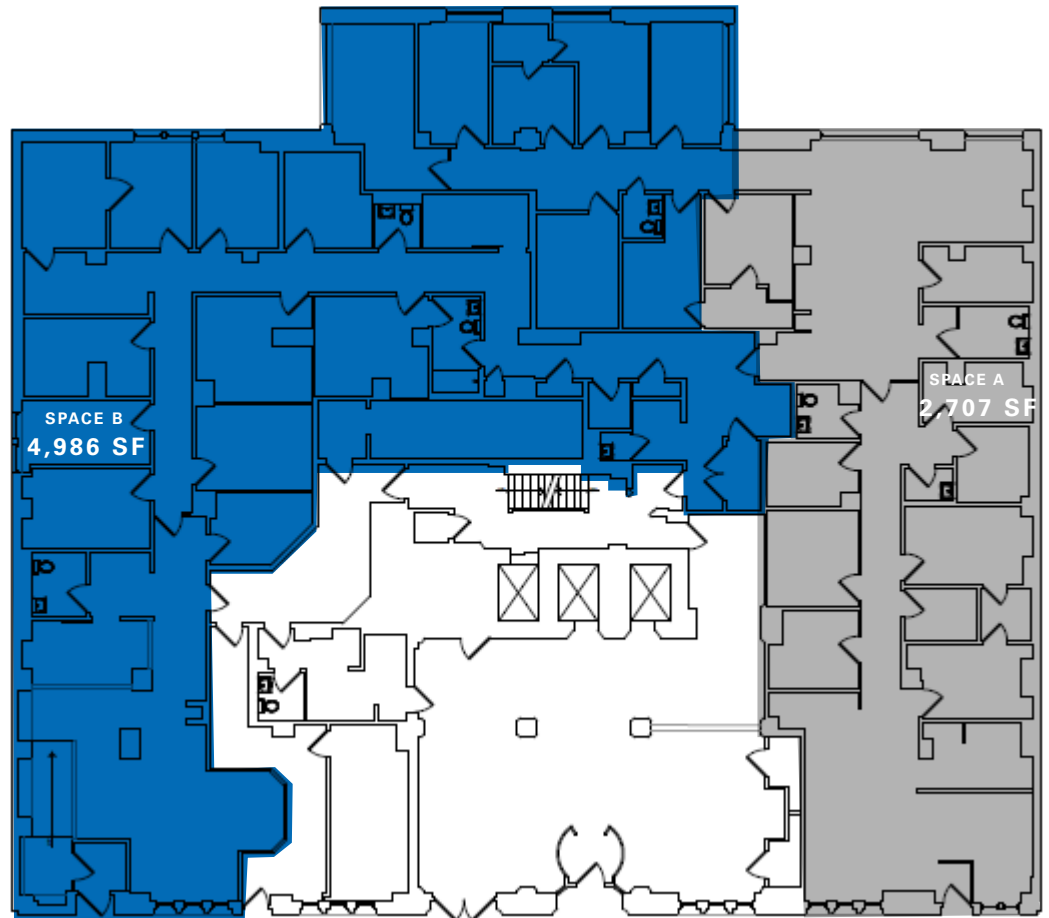
Central Park, Chase Bank, Starbucks, Wine & Liquor and UPS Store

Comments

Prime 86 Street office, medical, day care/ school space at the base of a luxury residential building

Second generation medical space and HVAC in place

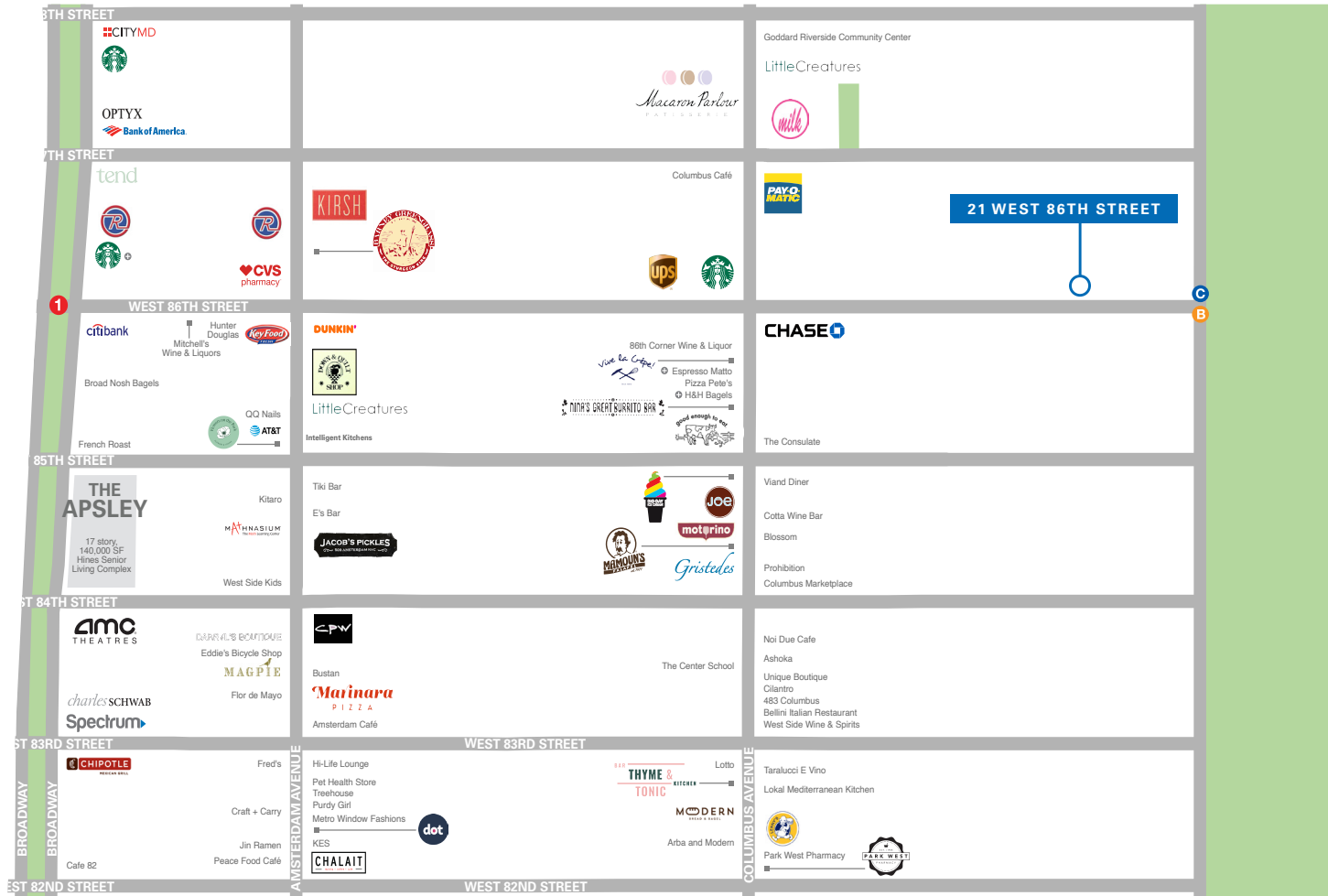
Ground Floor



21 WEST 86TH STREET



21 WEST 86TH STREET



CONTACT

Aric Trakhtenberg
 t 212-916-3388
 aric.trakhtenberg@nmrk.com

Ross Berkowitz
 t 212-916-3388
 ross.berkowitz@nmrk.com

Ravi Idnani
 t 212-916-2938
 ravi.idnani@nmrk.com

nmrk.com

+ COMING SOON