



# COURTHILL

H O U S E

WATER LANE | WILMSLOW | SK9 5AP



## DESCRIPTION

Courthill House is a prominently located office building ideally situated in the heart of Wilmslow town centre fronting Water Lane. The building has fantastic amenities and transport on its doorstep. Amenities includes Gail's Bakery, Smoke and Hotel Chocolat.

The second-floor space and common area are about to undergo a refurbishment which will deliver a welcoming work environment.



# AT THE CORE OF WILMSLOW



## SPECIFICATIONS



REFURBISHMENT COMING SOON



CENTRAL LOCATION



ON-SITE PARKING



24-HOUR ACCESS



CCTV SECURITY



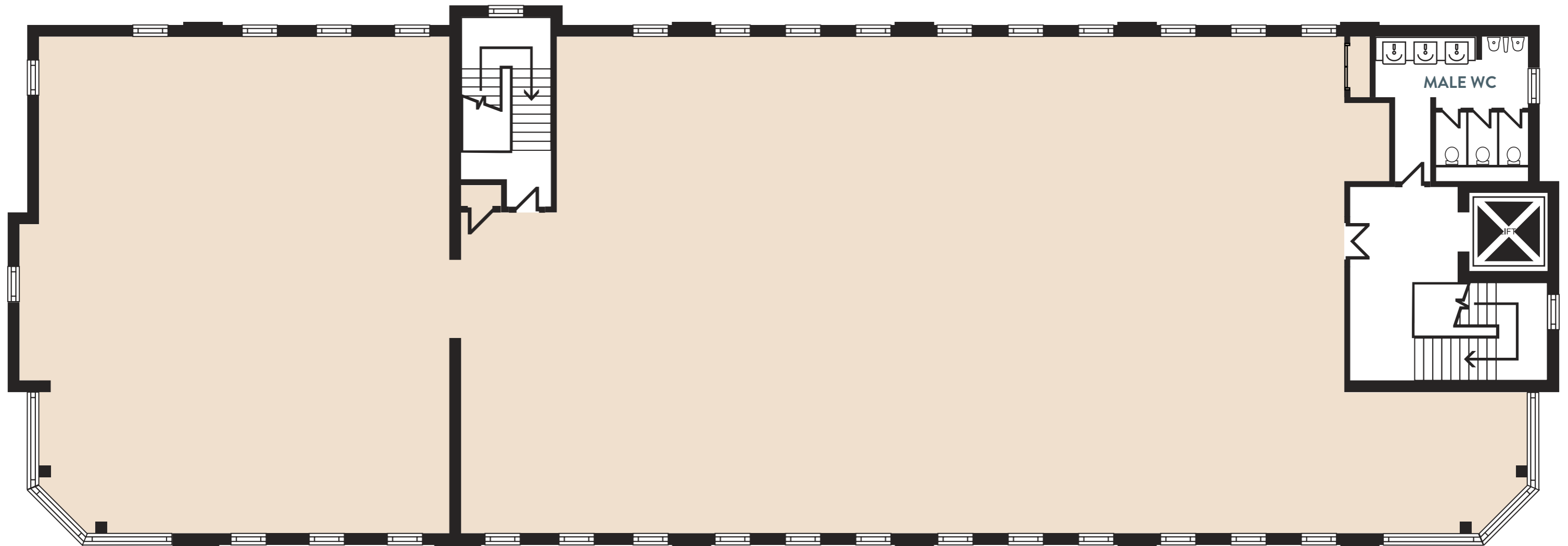
OPEN PLAN FLOOR PLATES

**FLEXIBLE FOR  
YOUR NEEDS**

**SECOND FLOOR**

**4,510 SQ.FT.**

**419 SQ.M.**





**WALKING**

- Courthill House**
- Gail's Bakery  
1 Min
- Juniper  
2 Mins
- Stolen Lamb  
3 Mins
- Rex Cinema  
4 Mins
- Tesco/Post Office  
5 Mins
- Cibo  
6 Mins
- Waitrose  
7 Mins
- Leisure Centre  
8 Mins
- Wilmslow Train Station  
9 Mins

**10 MINS**

**DRIVING**

- Courthill House**
- A34  
2 Mins
- A555  
5 Mins
- Manchester Airport  
10 Mins
- M60  
12 Mins
- M56  
13 Mins
- Manchester City Centre  
25 Mins
- M6  
28 Mins
- Chester  
50 Mins
- Liverpool  
1 Hour

**1 HOUR**

**TRAIN**

- Wilmslow**
- Alderley Edge  
3 Mins
- Chelford  
7 Mins
- Cheadle Hulme  
7 Mins
- Manchester Airport  
8 Mins
- Stockport  
13 Mins
- Manchester Piccadilly  
27 Mins
- Crewe  
28 Mins
- Stafford  
40 Mins
- London Euston  
1 Hour 55 Mins

**2 HOURS**

**WILMSLOW**



# COURTHILL

H O U S E

WATER LANE | WILMSLOW | SK9 5AP

**Orbit**  
**Developments**  
**01625 588200**  
[orbit-developments.co.uk](http://orbit-developments.co.uk)

Images are for illustrative purposes only and may not represent the exact office space available.

Developer reserves the right to change the scheme in the future. However, the Vendors / Lessors and Agents of intended as a general outline only, for the guidance of prospective purchasers or tenants, and do not constitute the whole or any part of an offer or contract. (2) They cannot guarantee the accuracy of any description, dimension or other details contained in these Particulars and prospective purchasers or tenants should not rely on them as statements of fact or representation, but must satisfy themselves as to the accuracy of such details. (3) No employee of the Agents has any authority to make or give any representation or warranty, or enter into any contract whatsoever in relation to the property (0126)