



8730 GEORGIA AVENUE

Silver Spring, Maryland 20910

**OFFICE SPACES
FOR
RENT**

START FROM

\$20/SF/YR

287 - 1,350 SF

Offices available



*Individual Office, Therapist, and Dental Suites
Available!*



301-578-2261

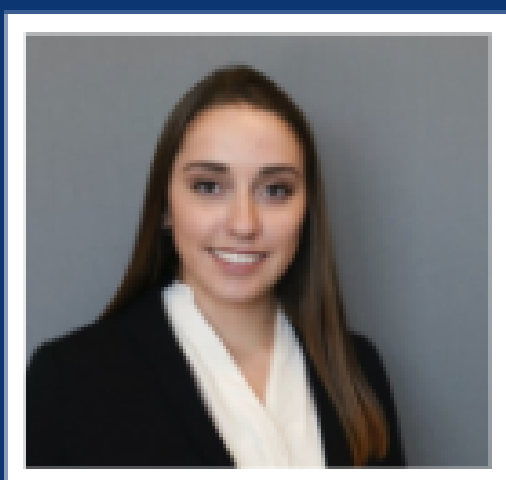


Sb@bnbinc.com

Amenity Map



- Walk Score of 98
- Transit score of 87
- Excellent Location and Parking
- 24/7 Access & Newly Upgraded Security System



Sophia Bellamah
301-578-2261
Sb@bnbinc.com



**PROPERTY PLUS
MANAGEMENT, INC.**

SPACES AVAILABLE

2nd Floor Ste. 209

Space Available: 918 SF

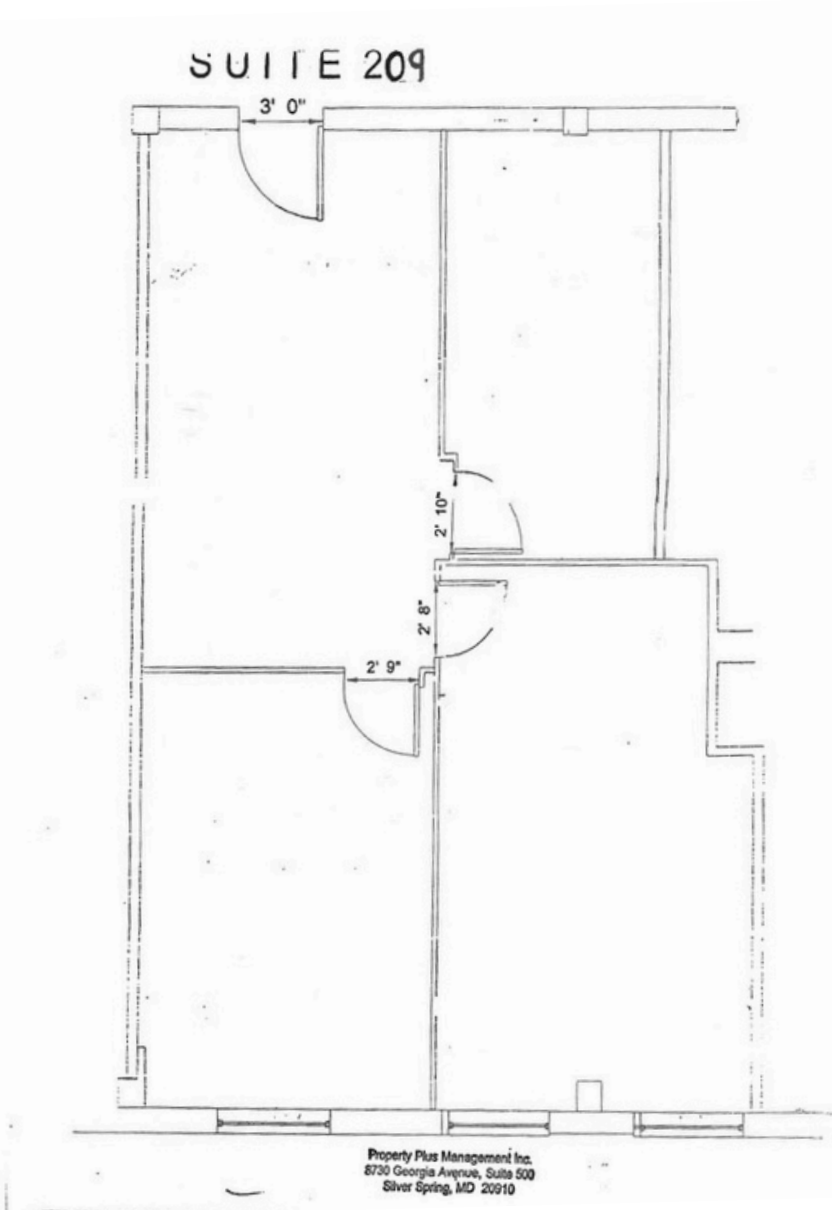
Rental Rate: Upon Request

Date Available: Immediately

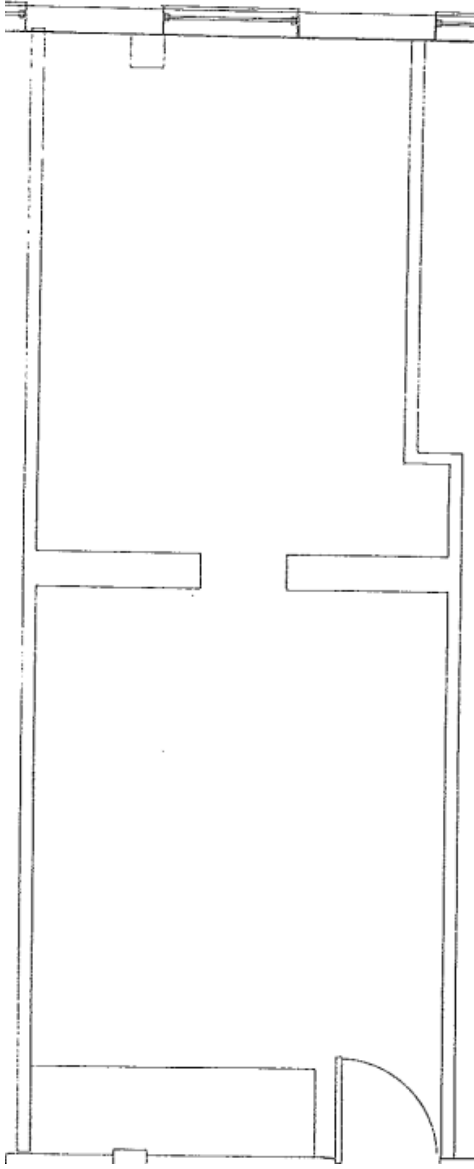
Space Use: Office/Retail

Lease Term: 1-5 years

Details: This 918 sq. ft. office space offers a functional and well-designed layout, perfect for a variety of professional uses. This versatile office features two private, windowed offices, a third office ideal as a workspace or conference room, and a welcoming waiting area. Perfect for small businesses, medical practices, or professional firms seeking a functional and professional setting.



[Click to Apply Today!](#)



SPACES AVAILABLE

2nd Floor Ste. 210

Space Available: 582 SF

Rental Rate: Upon Request

Date Available: Immediately

Space Use: Office

Lease Term: 1-5 years

Details: Nice space for reception area in the front of the suite with a private office in the back. Floor to ceiling window with street views.



[Click to Apply Today!](#)

SPACES AVAILABLE

2nd Floor Ste. 212

Space Available: 523 SF

Rental Rate: Upon Request

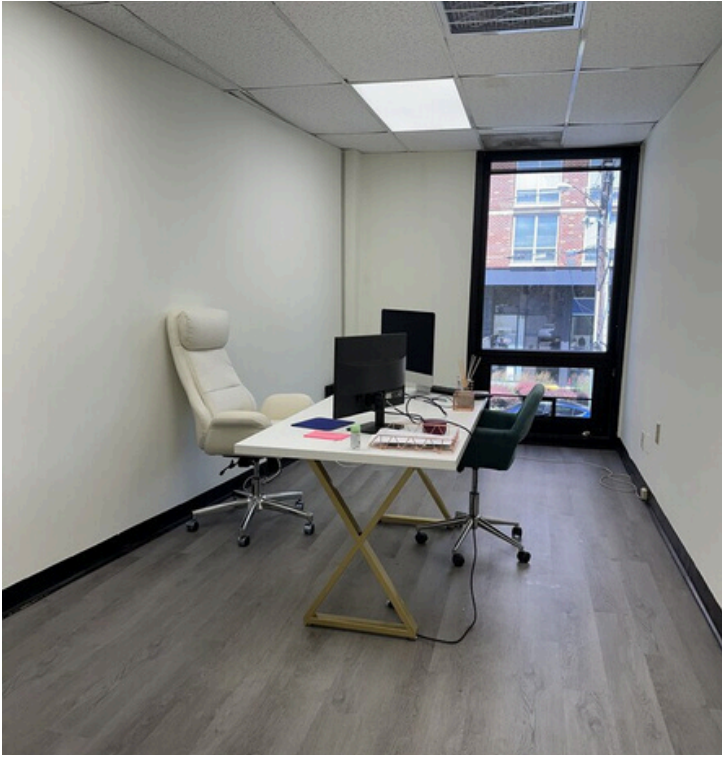
Date Available: Immediately

Space Use: Office

Lease Term: 1-5 years

Details: This office features a mostly open floor plan, perfect for a collaborative work environment.

A private office is located in the back for added privacy, while a welcoming reception area greets clients in the front. The space boasts vinyl plank flooring, abundant natural light, and a bright, airy atmosphere—ideal for productivity and comfort.



[Click to Apply Today!](#)

SPACES AVAILABLE



3rd Floor Ste. 300

Space Available: 1,200 SF

Rental Rate: Upon Request

Date Available: Immediately

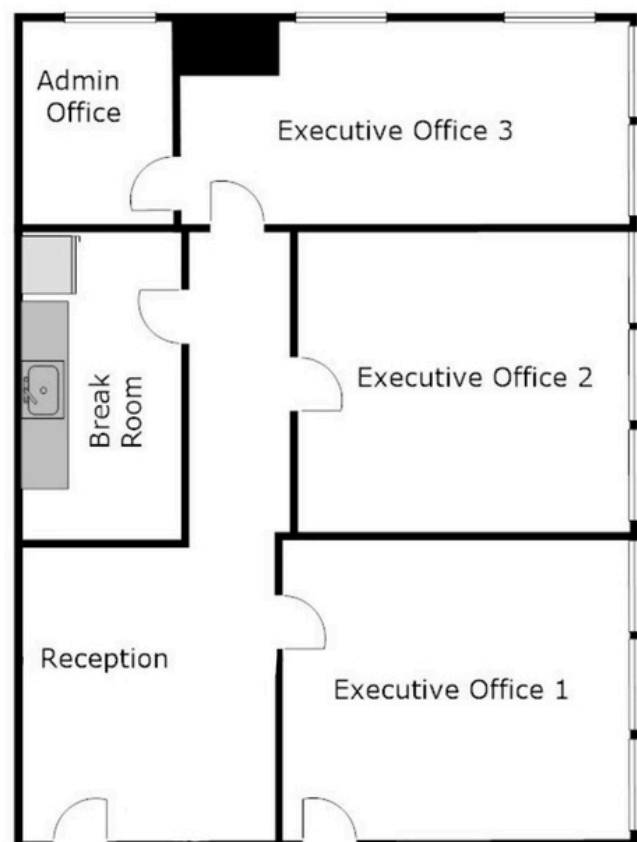
Space Use: Office/Retail

Lease Term: 3-5 years

Details: A quiet, sunlit suite featuring:

- 3 private offices with floor-to-ceiling windows and scenic views
- Inviting reception area
- Convenient kitchenette
- Comfortable furnishings (upon request) and neutral decor

Perfect for therapists, consultants, or professionals seeking a warm workspace.



SUITE #300 - 8730 Georgia Avenue Silver Spring, MD

[Click to Apply Today!](#)

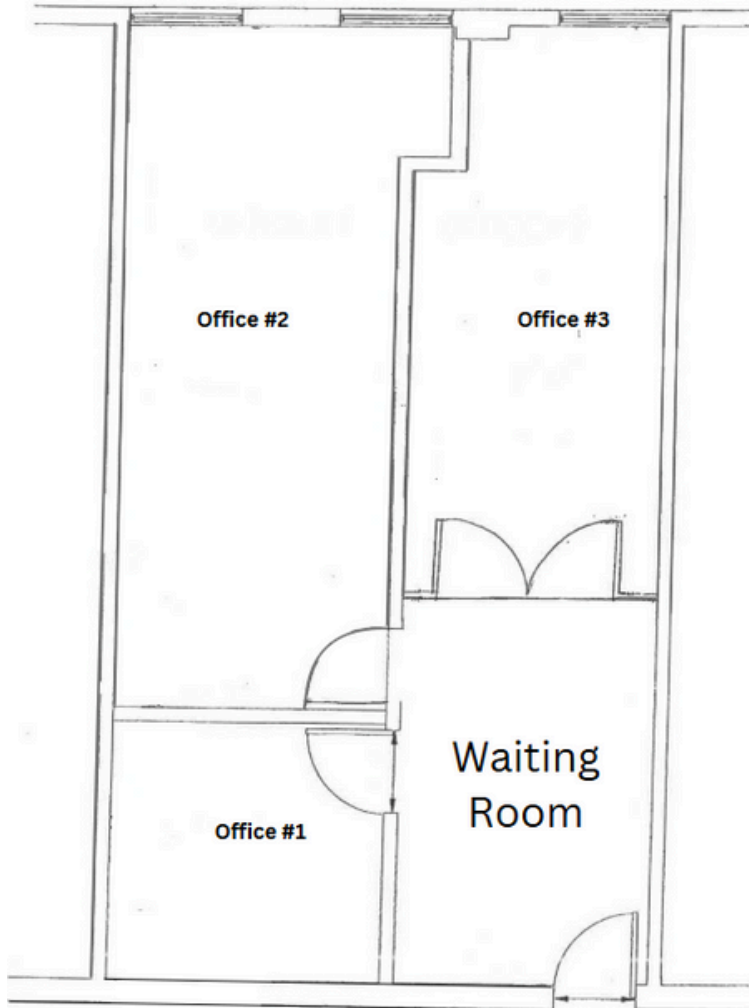


SPACES AVAILABLE

3rd Floor Ste 306

Space Available: 918 SF
Rental Rate: Upon Request
Date Available: Immediately
Built Out As: Office
Space Use: Office
Lease Term: 1 - 3 Years

Details: This bright and spacious office suite offers 918 square feet of well-designed space, featuring five offices and plenty of natural light from the stunning floor-to-ceiling windows. The suite includes a convenient coat closet and two separate entrances, adding functionality and flexibility for your business.



FLOOR PLAN - SUITE 306
PROPERTY PLUS MANAGEMENT, INC.
8730 Georgia Avenue, Silver Spring, Maryland
ALL DIMENSIONS ARE APPROX. AND ARE SUBJECT TO VERIFICATION.
NET LEASEABLE = 918 sf



[Click to Apply Today!](#)



SPACES AVAILABLE

3rd Floor Ste 308

Space Available: 870 SF

Rental Rate: Upon Request

Date Available: Immediately

Built Out As: Dental/ Medical Office

Space Use: Office

Lease Term: 3-5 Years

Details: This well-appointed dental suite is now available for lease—ideal for a dental professional seeking a ready-to-use space in a convenient and accessible location.

The suite features:

- A welcoming reception and waiting area
- A fully equipped laboratory room with its own sink
- A dedicated imaging/X-ray room
- A private office for administrative use or consultation
- Two dental chair stations, thoughtfully separated by a centrally located sink for workflow efficiency

The layout supports a seamless patient experience and operational efficiency. With two sinks—one in the lab and one between the treatment stations—this space is designed with hygiene and convenience in mind.

Perfect for a general dentist, specialist, or satellite office.



[Click to Apply Today!](#)

SPACES AVAILABLE



5th Floor Ste 512

Space Available: 650 SF
Rental Rate: Upon Request
Date Available: Immediately
Built Out As: Office
Space Use: Office
Lease Term: 1 - 3 Years

Details: Discover a versatile and inviting office suite designed to meet the needs of small teams or independent professionals. Suite 512 features two private offices, ideal for focused work or client meetings, separated by a welcoming reception area perfect for greeting visitors or creating a collaborative space.



[Click to Apply Today!](#)

SPACES AVAILABLE

6th Floor Ste 606



Space Available: 563 SF

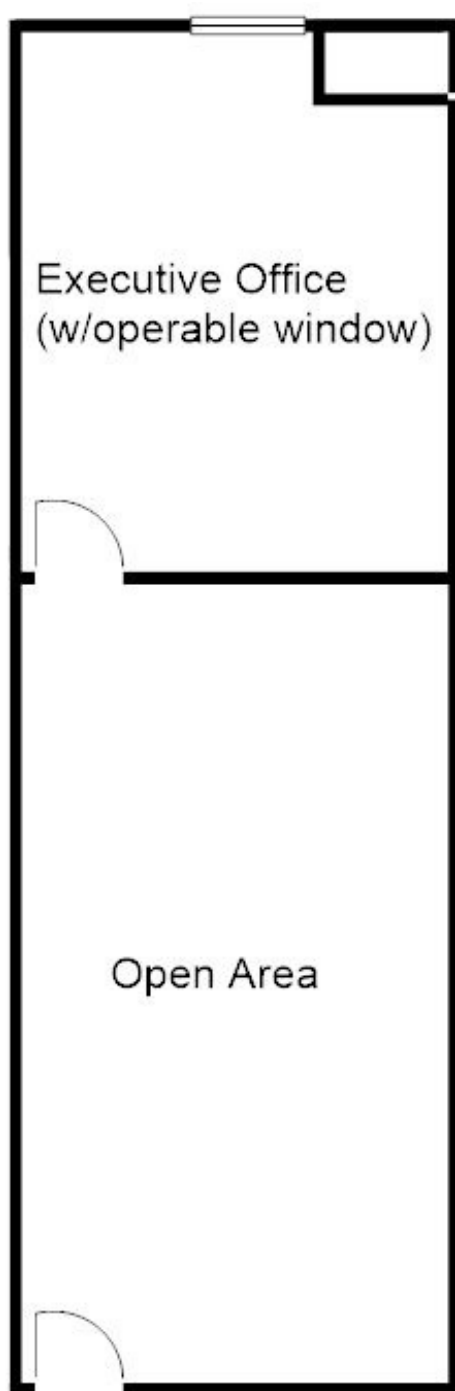
Rental Rate: Upon Request

Date Available: Now

Space Use: Office

Lease Term: 1 - 5 Years

Details: Suite 606 is a private, top-floor office featuring a functional and welcoming layout. The front area serves perfectly as a waiting or reception space, while the back room offers a quiet, enclosed office for focused work or client meetings. Enjoy an excellent view from this bright, upper-level suite, complete with modern vinyl plank flooring that adds both style and durability. Ideal for professionals seeking a clean, private workspace in a premium location.



[Click to Apply Today!](#)

SPACES AVAILABLE



6th Floor Ste 600 H

Space Available: 287 SF

Rental Rate: Upon Request

Date Available: Now

Space Use: Office

Lease Term: 1 - 5 Years

Details: Single offices. Floor to Ceiling Windows in office H. Shared Entrance and Kitchenette. Turn-key private office suite doors. All utilities included (except for internet).



[Click to Apply Today!](#)

SPACES AVAILABLE



6th Floor Ste 610

Space Available: 1,350 SF

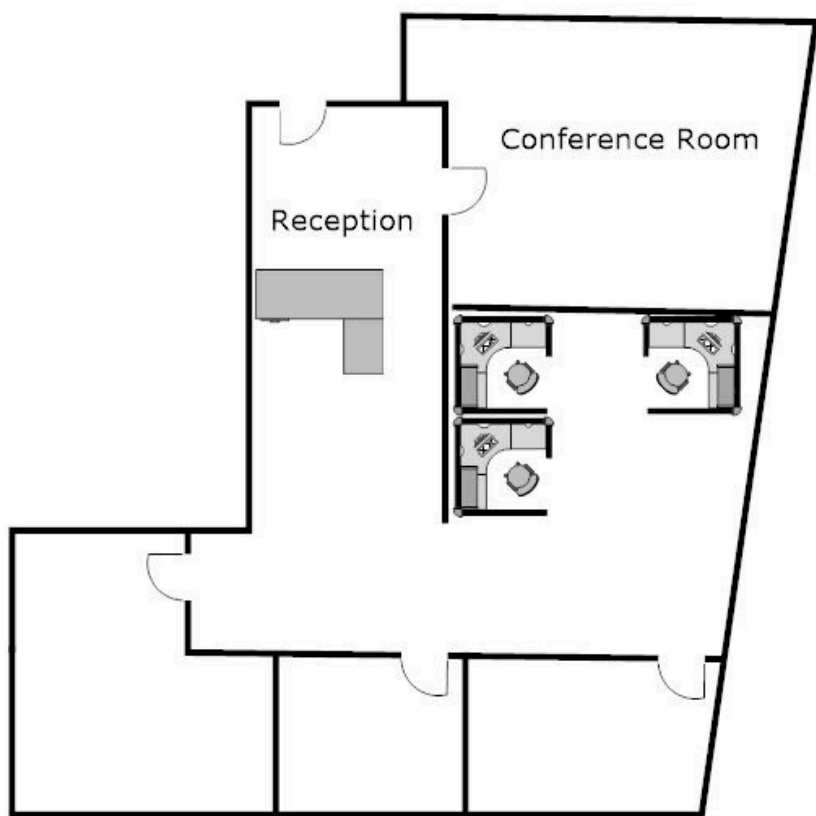
Rental Rate: Upon Request

Date Available: 7/01/2025

Space Use: Office

Lease Term: 1 - 5 Years

Details: This well-appointed office suite features three private offices, a dedicated conference room area, and a welcoming waiting room at the front—perfect for client-facing businesses or collaborative teams. With a functional layout that balances privacy and productivity, this space offers an ideal setting for professional services, startups, or remote teams looking for a polished and efficient workspace.



Suite 610- 8730 Georgia Avenue

[Click to Apply Today!](#)

SPACES AVAILABLE

Lower Level Ste B102



Space Available: 1085 SF

Rental Rate: Upon Request

Date Available: Immediately

Built Out as: Standard Office/ Teaching Space

Space Use: Office, Mixed Use

Lease Term: 2-5 years

Details: This suite was previously used as a classroom for a driving school and would make a great teaching space! All chairs and tables pictured are available to use in the space upon request!

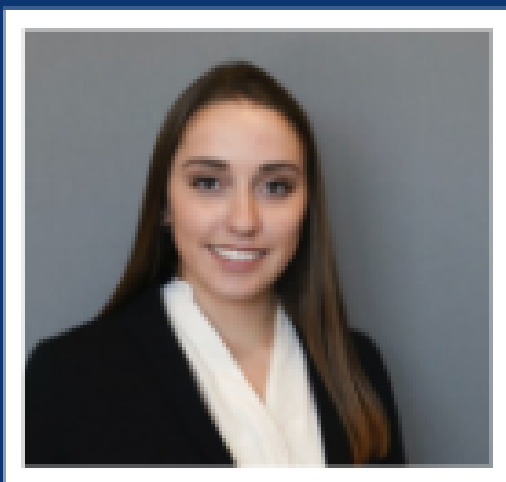


[Click to Apply Today!](#)



[Apply Today!](#)

<https://my.forms.app/form/6303d08276e3ce330d760530e>



Sophia Bellamah
301-578-2261
Sb@bnbinc.com



**PROPERTY PLUS
MANAGEMENT, INC.**