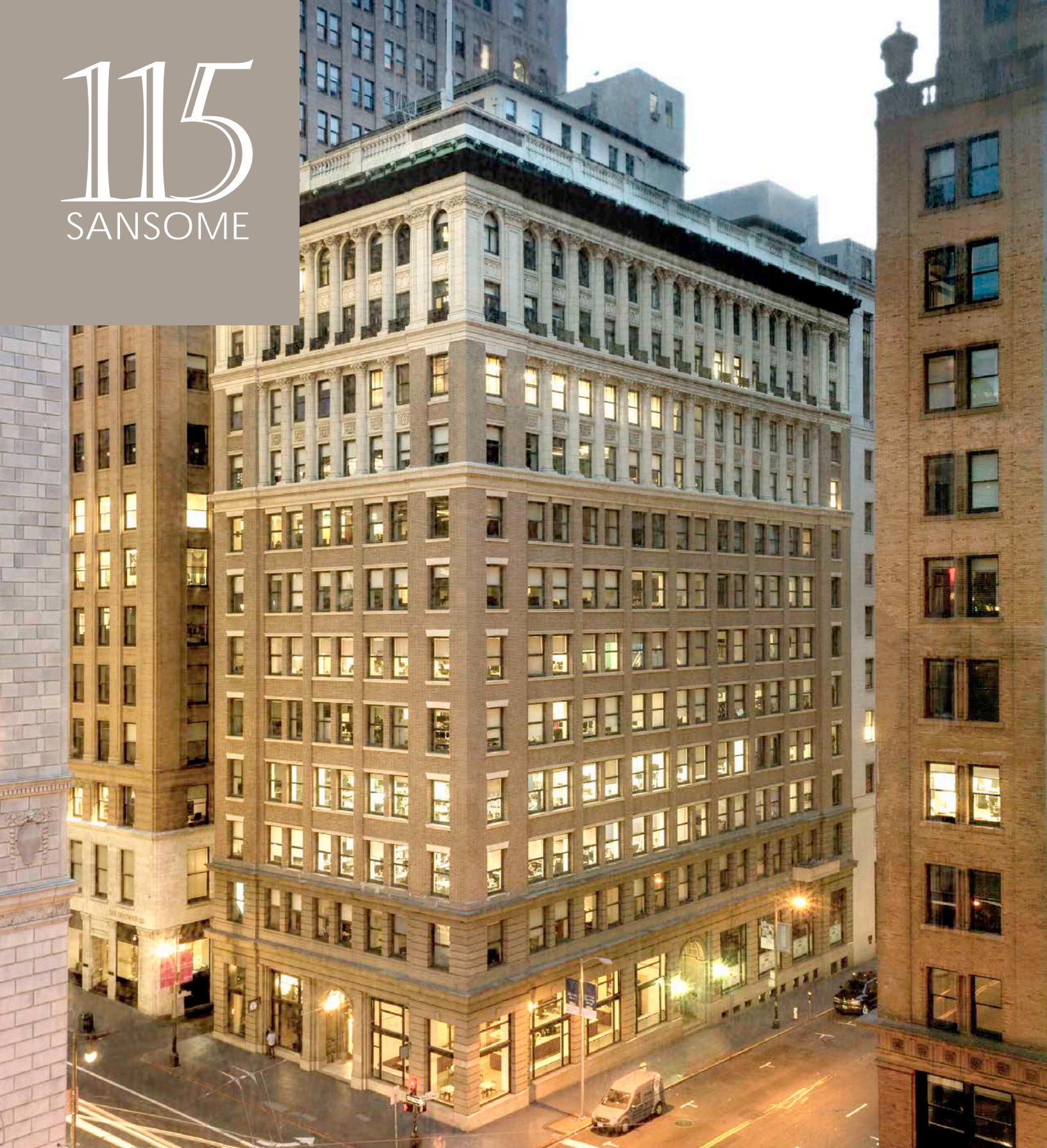


115

SANSOME



WES POWELL

+1 415 395 4901

wes.powell@jll.com

RE License #1702003

CHRIS HOLLAND

+1 415 354 6917

chris.holland@jll.com

RE License #01474598



Jones Lang Lasalle Brokerage, Inc.
Real estate License #: 01856260

115

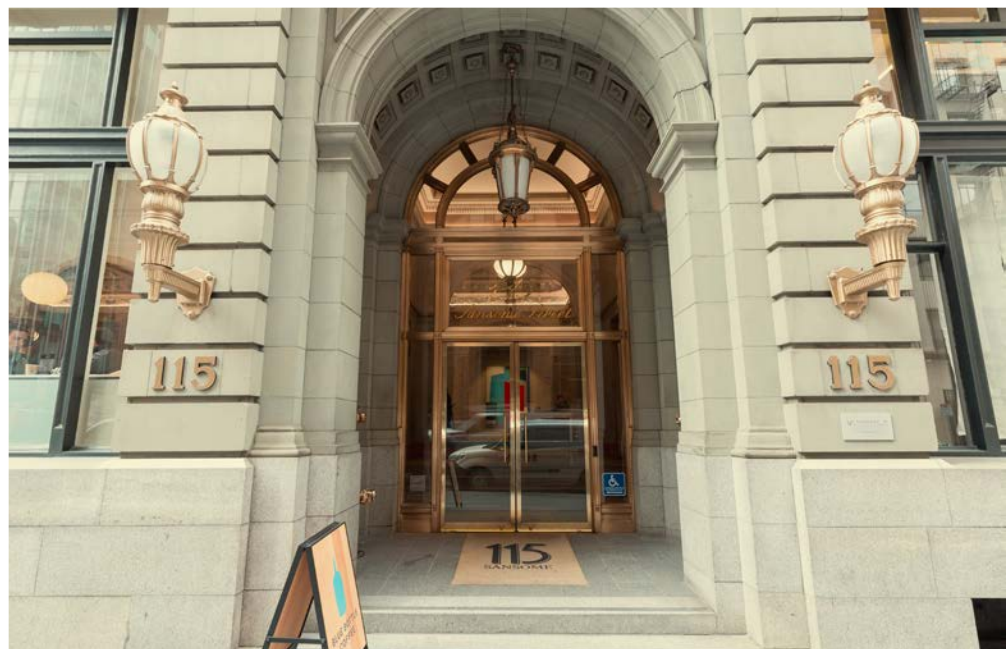
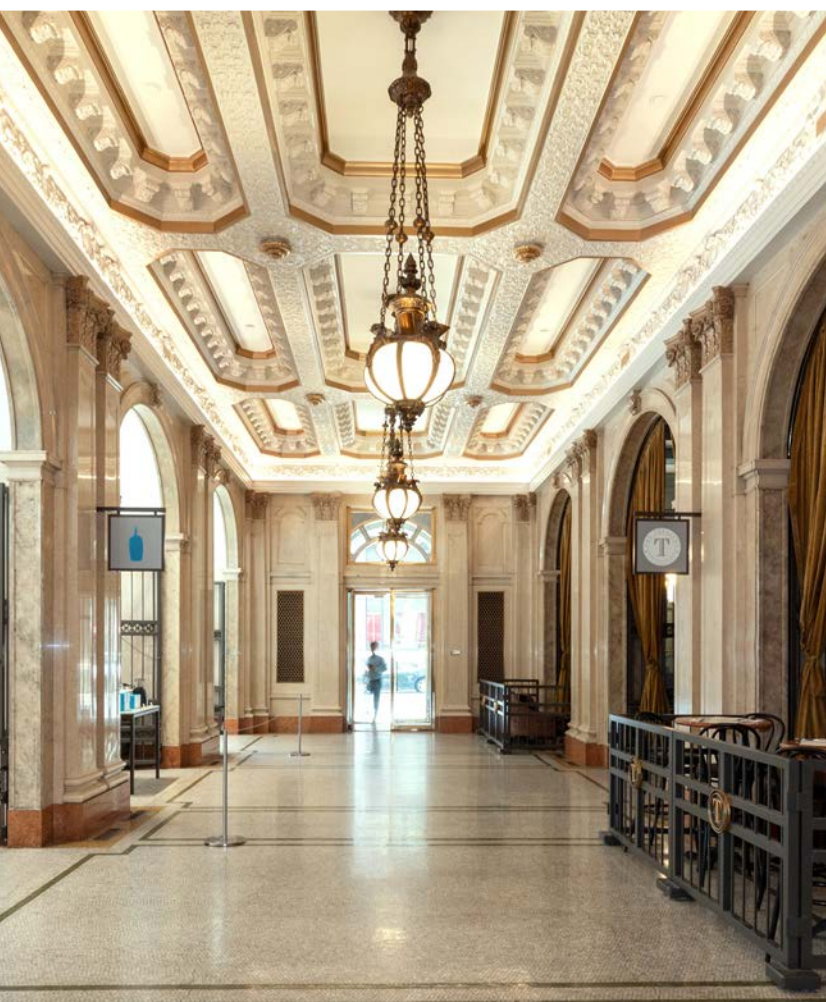
SANSOME

THE BUILDING

Built in 1912 to be the headquarters for Standard Oil Company, 115 Sansome is A San Francisco landmark and exquisite 19th century French Beaux-Arts masterpiece.

It has a total of 118,100 square feet of highly improved office and storage space with exceptional ground floor retail amenities including a sophisticated cocktail lounge and eatery, The Treasury and wildly-popular Blue Bottle Coffee, and the Shota, a Japanese sushi restaurant with seasonal items flown in from the Toyosu Fish Market in Tokyo.

There are 14 stories with the penthouse space located on both the 14th & 15th floor. The property is located less than one block from Market Street, home to San Francisco's Vast public transit network offering excellent connectivity to the entire Bay Area.



PROPERTY

San Francisco's premier
creative boutique building

FEATURES



Efficient & Flexible
Floor Plates



Exceptional Location,
Steps away from
BART/Muni/Bus/Rail



Exposed
concrete floor,
ceilings, and brick



Operable
copper-clad
windows



Large secure
bike storage



Showers on site



Storage units



Cocktail lounge
offering elevated
drinks and new
American nibbles



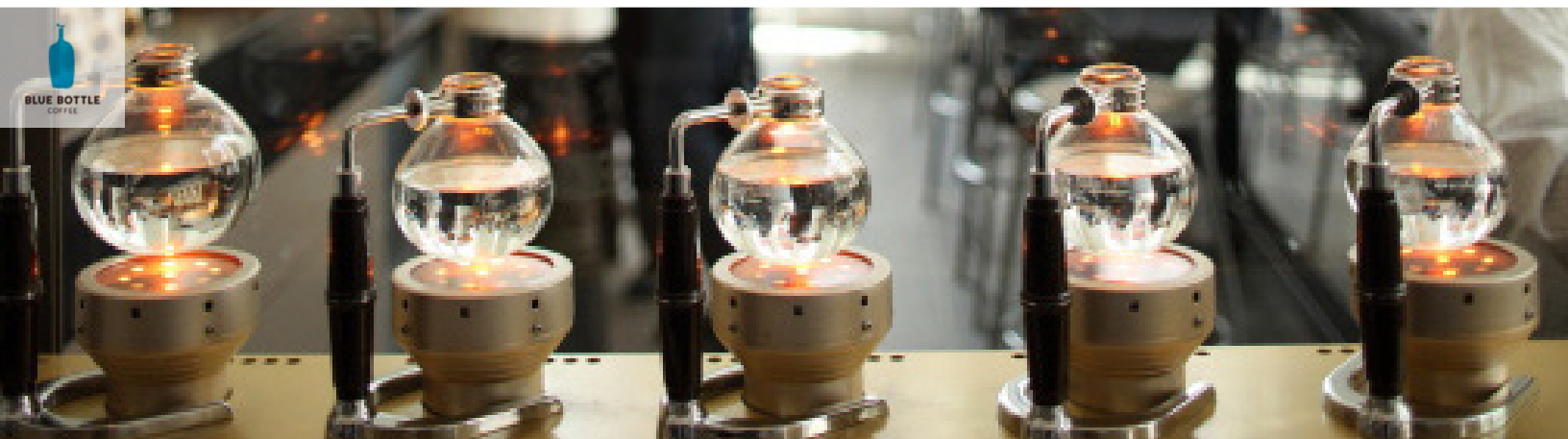
BLUE BOTTLE
COFFEE

Specialty coffee
roaster and brewer



THE SHOTA

Seasonally inspired
Japanese
tasting menu





SECOND FLOOR AMENITY CENTER



VIRTUAL TOUR

Experience high end furnishings with a collaborative and flexible layout



Suite 300

9,192 RSF

- Available August 1, 2026
- Fully furnished creative floor
- 3 conference rooms
- 2 private offices
- Kitchen
- Mother's room
- Locker room with showers
- 54 workstations

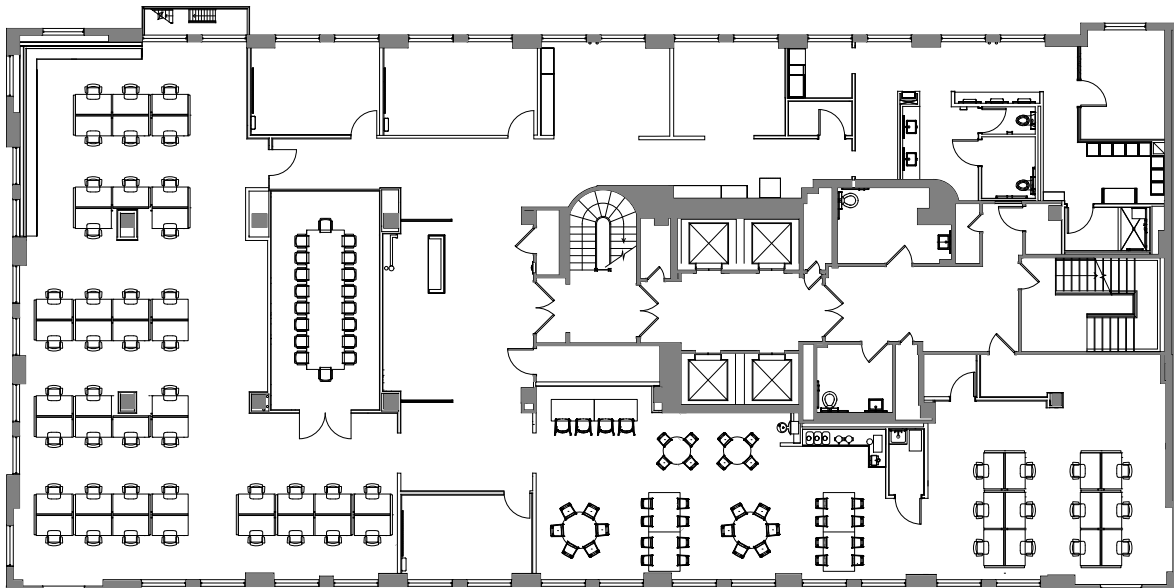
115
SANSOME



High end furnishings with collaborative and flexible layouts

VIRTUAL TOUR

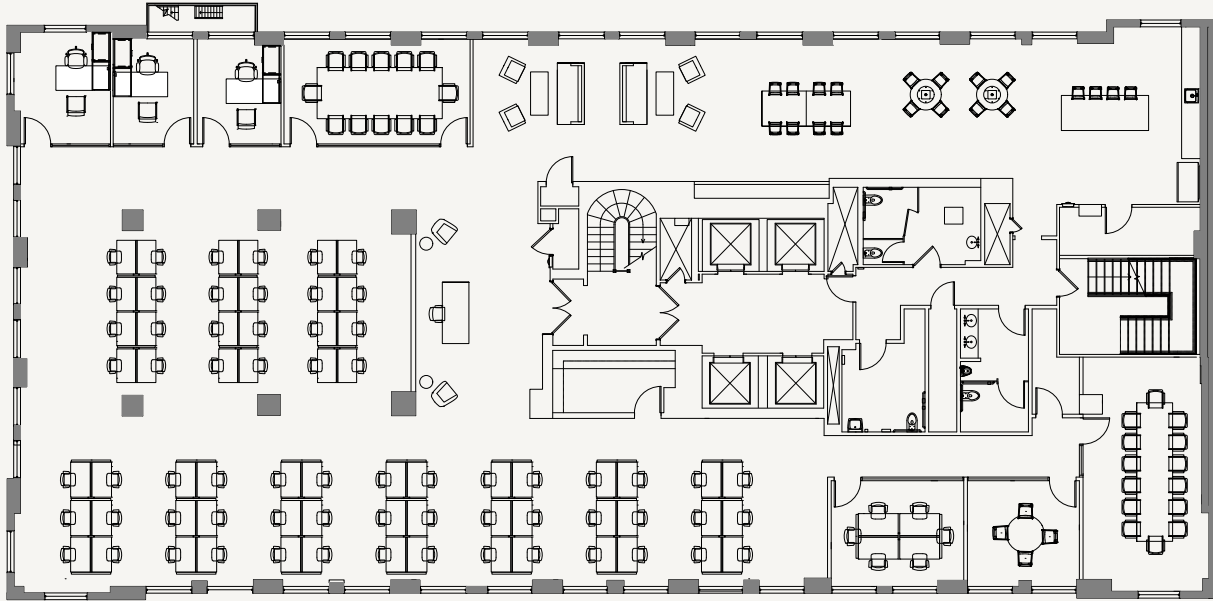
*Hypothetical Floor Plan



Suite 400

9,198 RSF

115
SANSOME



High end furnishings with collaborative and flexible layouts

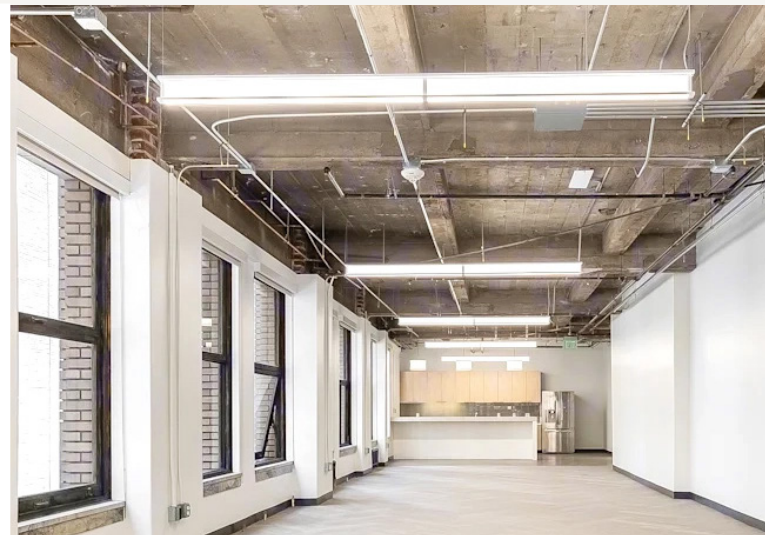
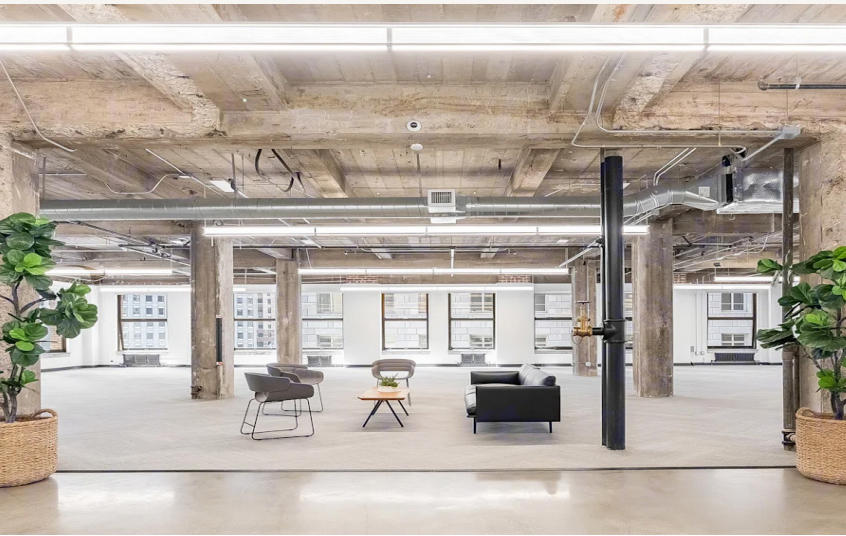
- Available Now
- Fully furnished creative floor
- 3 private offices
- 4 conference rooms
- Kitchen/break area
- Exposed ceiling
- IT room
- Storage room
- 66 workstations

Suite 600

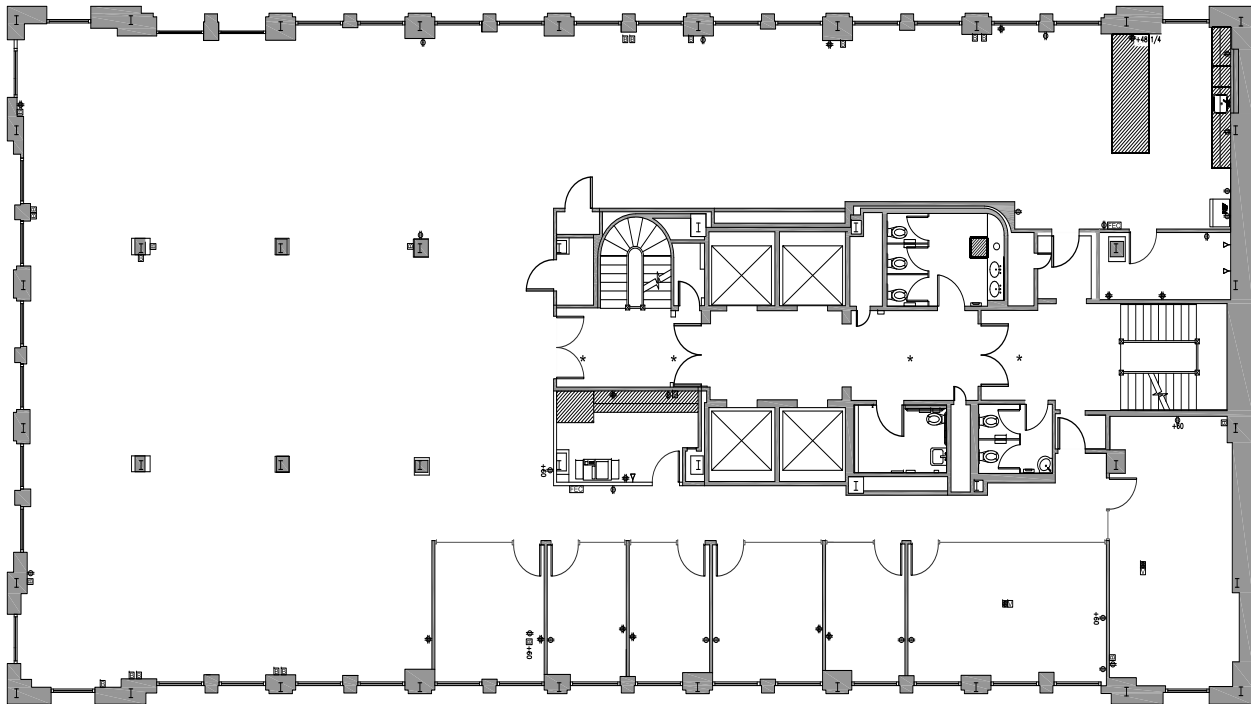
9,351 RSF

- Available August 1, 2026
- Creative space with exposed ceiling
- 2 large conference rooms
- 2 medium conference rooms
- 3 huddle rooms
- Kitchen
- IT room
- Open area: room for 60+ desks

115
SANSOME



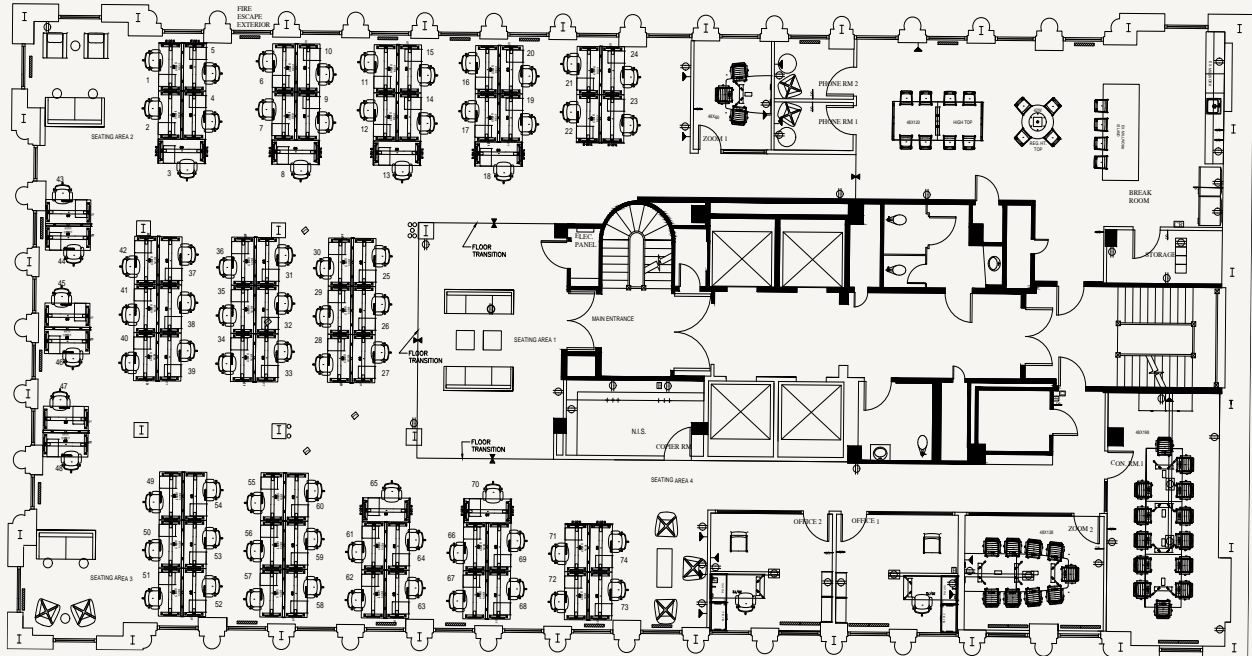
High end furnishings with collaborative and flexible layouts



Suite 900

8,973 RSF

115
SANSOME



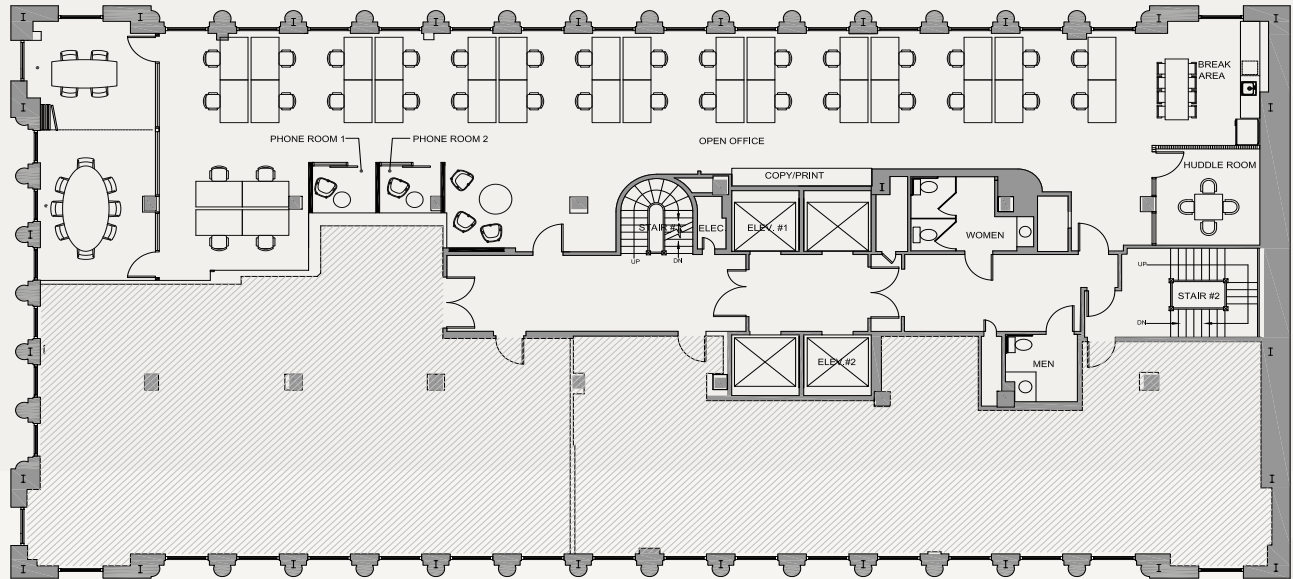
High end furnishings with collaborative and flexible layouts

- Available August 1, 2026
- Fully furnished creative floor
- 2 private offices
- 2 large conference rooms
- 1 small conference room
- Large kitchen & Break area
- Reception area
- IT/copy/storage room
- 54 workstations

Suite 1002

4,112 RSF

115
SANSOME



High end furnishings with collaborative and flexible layouts

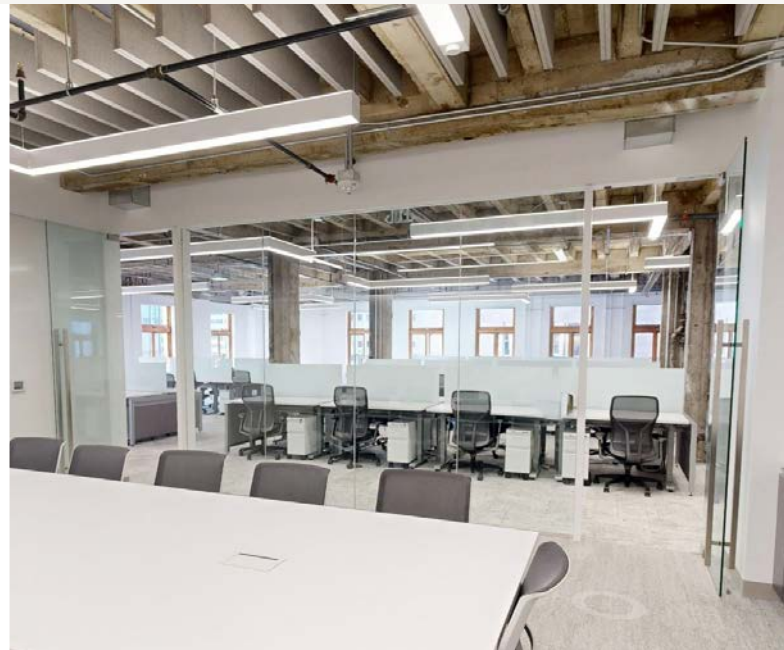
- Available June 1, 2026
- Fully furnished creative floor
- Open area: room for 34 desks
- 1 large conference room
- 2 medium conference rooms
- 2 phone rooms
- Kitchen / break area

Suite 1100

8,996 RSF

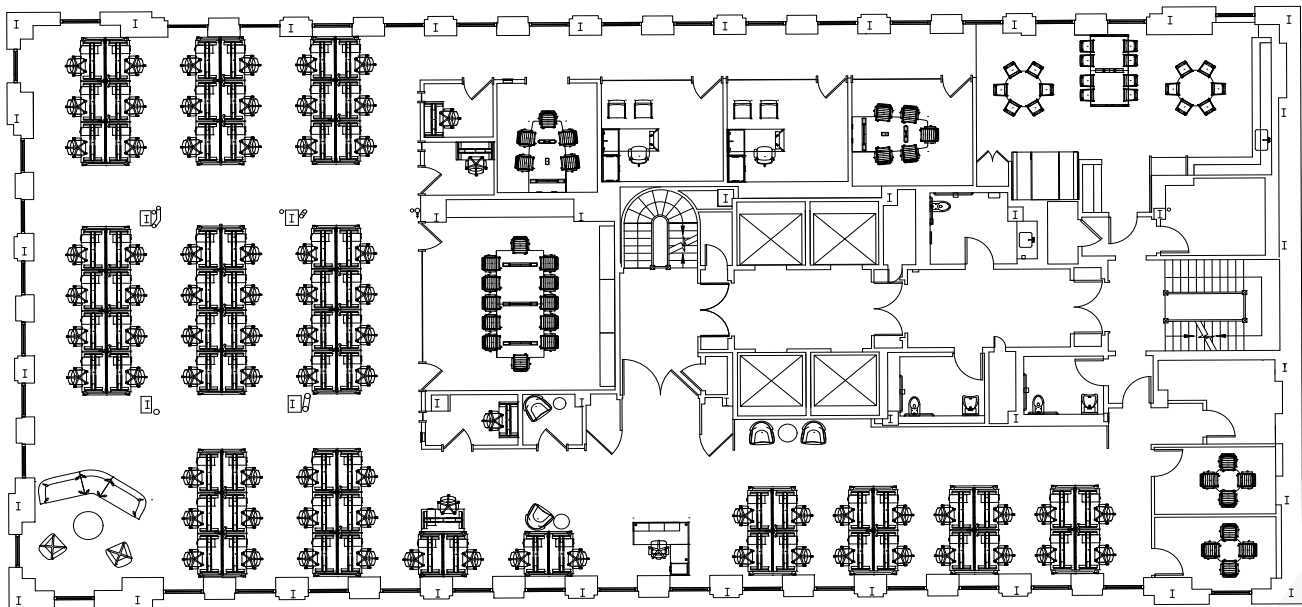
- Available now
- Recently Completed Plug & Play Spec Suite
- Fully furnished creative floor
- Large all hands/break area
- 2 private offices
- 1 large conference room
- 2 medium conference rooms
- 2 small meeting rooms
- 4 phone rooms
- 75 workstations

115
SANSOME



High end furnishings with collaborative and flexible layouts

VIRTUAL TOUR



115

SANSOME



CONTACTS:

WES POWELL

+1 415 395 4901

wes.powell@jll.com

RE License #1702003

CHRIS HOLLAND

+1 415 354 6917

chris.holland@jll.com

RE License #01474598



Jones Lang Lasalle Brokerage, Inc.
Real estate License #: 01856260