

# D.I. PLAZA

1195 E. Desert Inn Road, Las Vegas, NV 89109

AVAILABLE  
For Sale



5960 South Jones Boulevard  
Las Vegas, Nevada 89118  
T 702.388.1800  
F 702.388.1010  
www.mdlgroup.com

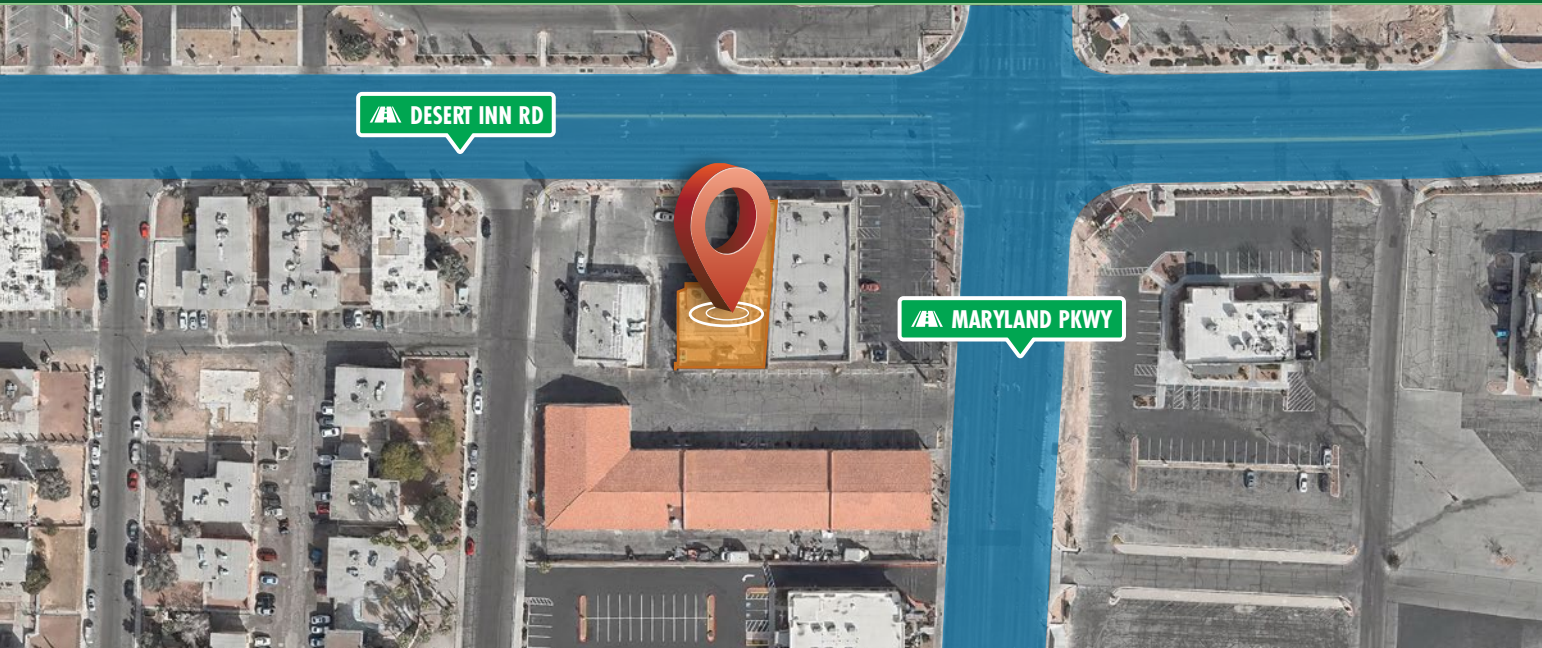
**Brendon Pereira**  
Associate  
Lic#: S.0203564  
702.415.3683  
bpereira@mdlgroup.com

**Buck Hujabre**  
Senior Vice President  
Lic#: BS.1002453 LLC  
225.284.0985  
bhujabre@mdlgroup.com

## D.I. PLAZA

1195 E. Desert Inn Road, Las Vegas, NV 89109

For Sale



### Listing Snapshot



**\$595,000**  
Sale Price



**\$133 PSF**  
Price per Square Foot



**±4,468 SF**  
Available Space



**East Central**  
Submarket

### Property Highlights

- Total Building Size: ±4,468 SF with fully built-out ±2,400 SF quick-service restaurant
- Suitable for owner-user or investment opportunity with existing income from Fiesta Mart tenant
- Excellent visibility at signalized intersection
- Adjacent to Las Vegas Country Club
- Less than ±2.0 miles from the Las Vegas Strip
- Highly-trafficked Desert Inn & Maryland Parkway corridor

### Property Overview

1195 E. Desert Inn Road is a ±4,468 SF two-unit neighborhood retail strip center strategically positioned at the signalized intersection of Desert Inn Road and Maryland Parkway in Las Vegas, Nevada. The property is currently fully occupied, featuring an established restaurant tenant occupying the ±2,400 SF quick-service restaurant space and Fiesta Mart, a long-standing ±2,068 SF mini-market tenant.

The property offers exceptional street visibility, dedicated onsite parking, and strong accessibility along one of Las Vegas' major east-west corridors. This investment opportunity provides immediate income from an occupied retail asset in a highly infill location near the Las Vegas Strip and Las Vegas Country Club. Investors may benefit from the property's strategic location, stable tenancy, and potential for future rental growth in one of Las Vegas' most established commercial corridors.

### Key Demographics (within a 3-mile radius)



**±171,363**  
Population Size



**\$73,522**  
Ave. Household Income

APN 162-15-503-002  
Zoning General Commercial (C-2)  
Year Built 1963 (Renovated 2021)  
Property Size ±4,468 SF  
Lot Size ±0.34 AC

**MDLGroup**  
Service you deserve. People you trust.

**CORFAC**  
INTERNATIONAL  
MEMBER | PARTNER

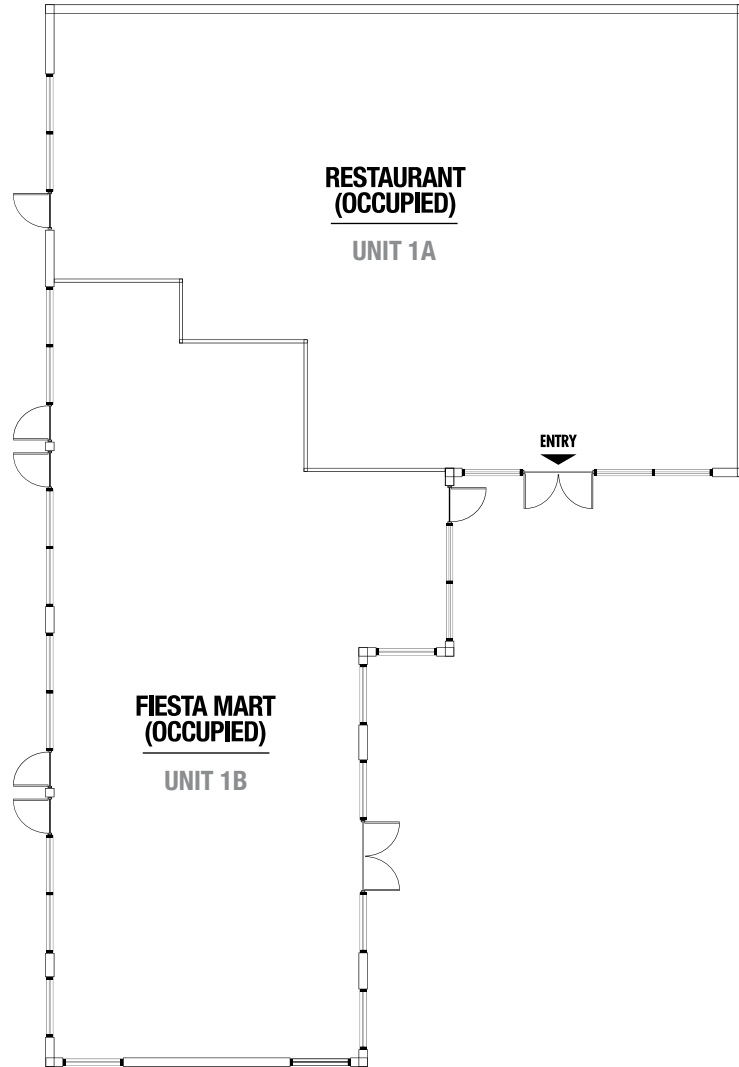
Copyright © MDL Group. All rights reserved.

📍 5960 S. Jones Boulevard, Las Vegas, Nevada 89118  
📞 (702) 388-1800 MAIN • (702) 388-1010 FAX  
🌐 [www.mdlgroup.com](http://www.mdlgroup.com)

# D.I. PLAZA

1195 E. Desert Inn Road, Las Vegas, NV 89109

For Sale



## Sale Details



**\$595,000**  
Sale Price



**\$133 PSF**  
Price per Square Foot



**±4,468 SF**  
Available Space

## Suite Specs

Total SF	±4,468
Restaurant SF (Unit 1A)	±2,400
Fiesta Mart SF (Unit 2A)	±2,068



Service you deserve. People you trust.

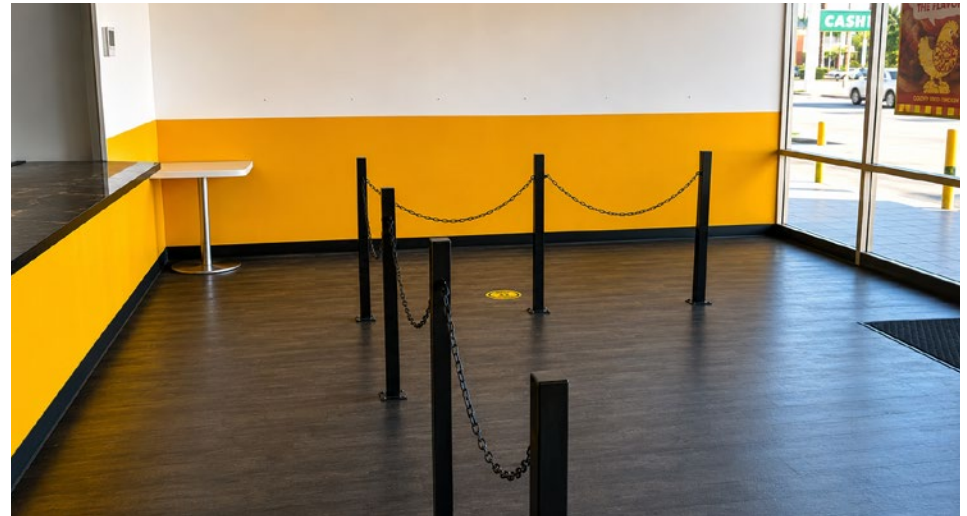


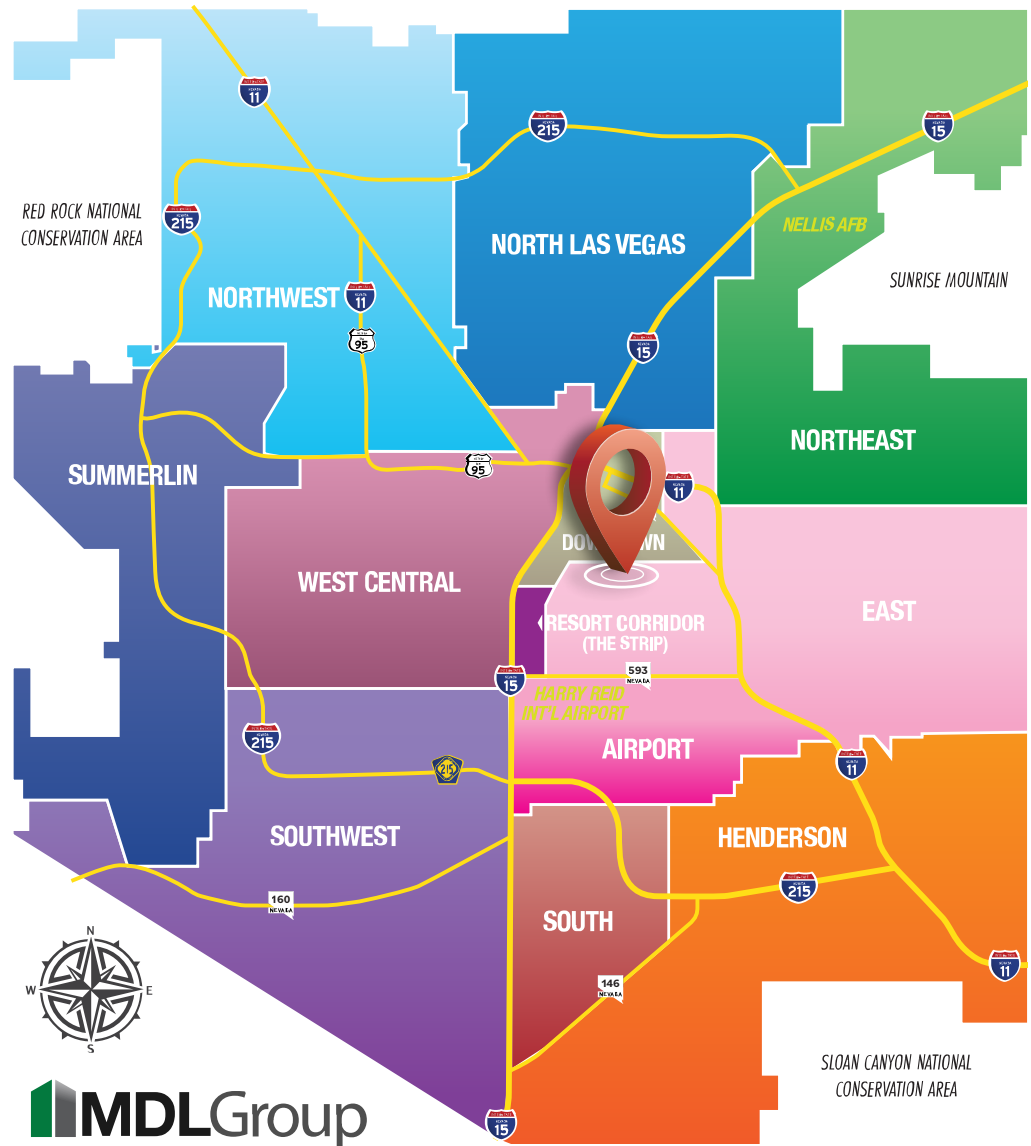
*Drawings and plans are not to scale. Any measurements are approximate and are for illustrative purposes only. There is no guarantee, warranty or representation as to the accuracy or completeness of any plans or designs.*

Copyright © MDL Group. All rights reserved.

5960 S. Jones Boulevard, Las Vegas, Nevada 89118  
(702) 388-1800 MAIN • (702) 388-1010 FAX  
[www.mdlgroup.com](http://www.mdlgroup.com)

Property Photos





### Distance to Landmarks

- I-15 FWY: ±2.5 miles
- I-11 FWY: ±2.9 miles
- Harry Reid International Airport: ±4.6 miles
- The Strip: ±1.62miles

### Nearby Amenities

- Across the street from The Las Vegas Country Club and a short drive to the Wynn Golf Club
- ±2 miles away from the Fashion Show Las Vegas complex for several retail and dining options
- ±5.0 miles to both Valley Hospital Medical Center and UMC Hospital Campus
- ±5.5 miles away from the heart of Downtown where amenities retail, municipal, and legal organizations are situated, including the Las Vegas North Premium Outlets, City Hall, and U.S. District Court

# D.I. PLAZA

1195 E. Desert Inn Road, Las Vegas, NV 89109

For Sale



**MDLGroup**  
Service you deserve. People you trust.

**CORFAC**  
INTERNATIONAL  
MEMBER | PARTNER

5960 S. Jones Boulevard, Las Vegas, Nevada 89118  
(702) 388-1800 MAIN • (702) 388-1010 FAX  
[www.mdlgroup.com](http://www.mdlgroup.com)

# Clark County Nevada

## Synopsis


As of the 2020 census, the population was 2,265,461, with an estimated population of 2,506,458 in 2025. Most of the county population resides in the Las Vegas Census County Divisions across ±435 square miles. It is by far the most populous county in Nevada, and the 11th most populous county in the United States. It covers 7% of the state's land area but holds 73% of the state's population, making Nevada one of the most centralized states in the United States.

With jurisdiction over the world-famous Las Vegas Strip and covering an area the size of New Jersey, Clark County is the nation's 14th-largest county. The County is a mix of urban and rural locales that offers the convenience of city living with access to some of the nation's best outdoor recreational areas just a short drive away.

Clark County employs more than 10,000 people over 38 departments. The County has an annual budget of \$11.4 billion, which surpasses that of the state government.

## Quick Facts

 **±7,892**  
Land Area  
(Square Miles)

 **2,265,461**  
Population  
(County Data per Census)

 **298**  
Pop. Density  
(Per Square Mile)

Sources: [clarkcountynv.gov](http://clarkcountynv.gov), [data.census.gov](http://data.census.gov), [lvgea.org](http://lvgea.org), [wikipedia.com](http://wikipedia.com)

# City of Las Vegas

## Synopsis

The City has cultivated and championed a variety of important projects for the benefit of the community. Some highlights include downtown's newest property Circa, scheduled to open this year. Circa is downtown's first newly built hotel-casino since the 1980s and includes a 459-foot-tall tower, 777 new rooms, a massive sports book, multiple swimming pools, bars and restaurants.

There has been a \$32 million upgrade to the Fremont Street Experience canopy, and the new Downtown Grand tower is just north of the canopy making the area even more spectacular. The City is looking forward to the grand opening of the new ±350,000 SF International Market Expo Center. Another downtown highlight is the new residential development which includes two complexes on Symphony Park and ShareDOWNTOWN in the 18B Las Vegas Arts District.

The City is also bringing new technologies & industry to Las Vegas.

The heart of the Innovation District is the new International Innovation Center @Vegas. The City of Las Vegas continues to be a hub for innovation and technology with the opening of this ±11,000 SF center for established and emerging tech companies developing smart technologies.

## Quick Facts

±142

Land Size  
(square miles)



641,903

Population  
(as of 2025)



4,526

Population Density  
(per square mile)



Service you deserve. People you trust.



# Nevada Tax Advantages

## NEVADA

has always been a popular choice for businesses due to various factors such as low-cost startup, regulatory benefits, and competitive utility rates.

The Tax Climate Index rankings: California ranks 48th, Arizona 14th, Idaho 9th, Oregon 35th, and Utah 15th.

### Here are the main tax advantages of this state:

- No income tax
- No tax on pensions
- No tax on social security
- No tax on estate or inheritance
- Low property taxes
- No gross receipts tax
- No franchise tax
- No inventory tax
- No tax on issuance of corporate shares
- No tax on sale or transfer of shares

### Nevada Tax System:

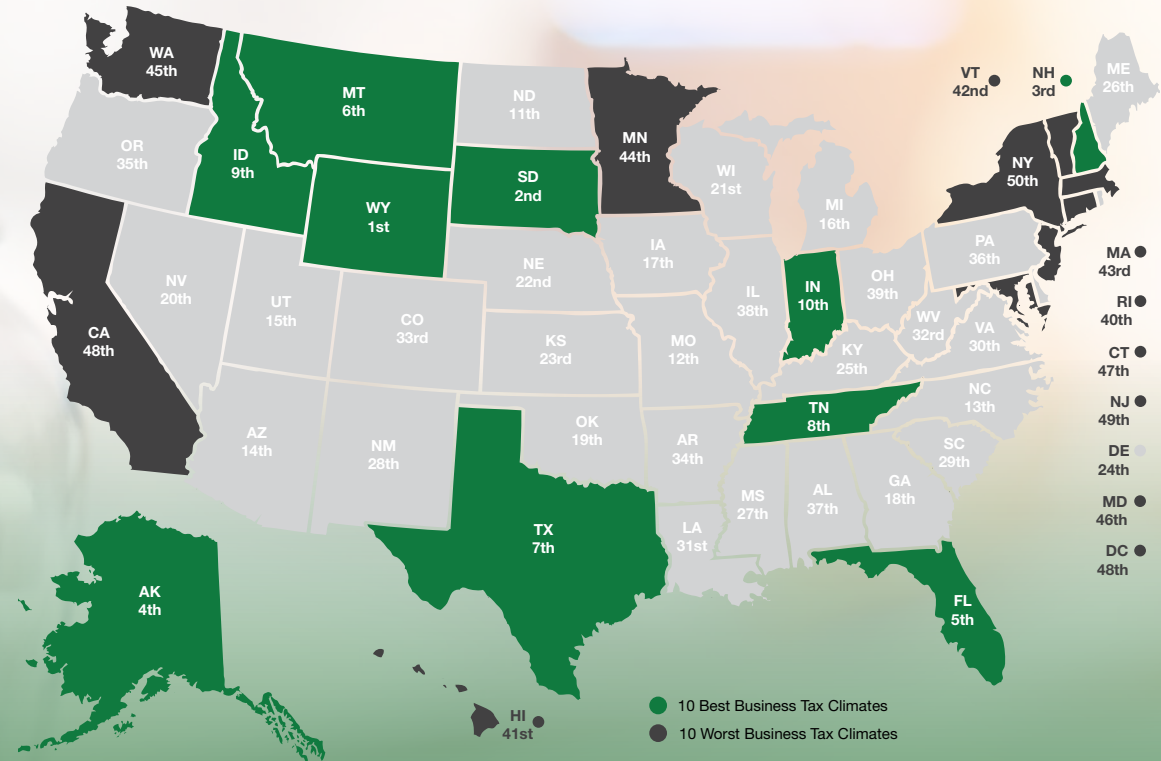
Nevada is ranked 20th in the Tax Foundation's 2025 State Business Tax Climate Index, focusing on corporate taxes, individual income taxes, sales taxes, unemployment insurance taxes, and property taxes.

*Source: Nevada Governor's Office of Economic Development; www.TaxFoundation.org*

**MDLGroup**  
Service you deserve. People you trust.

**CORFAC**  
INTERNATIONAL  
MEMBER | PARTNER

## 2025 State Business Tax Climate Index



### Road Transportation

Las Vegas, and surrounding towns are less than one day's drive over arterial interstate highways to nearly 60 million consumers as well as to the major U.S. deep water seaports serving the Pacific Rim.



### Rail Transportation

Major Union Pacific and Southern Pacific rail connections in Las Vegas and Reno also, too, play an essential role in carrying the world's freight from the Pacific Coast to America's Heartland and beyond.



### Air Transportation

Globally, Harry Reid International Airport in Las Vegas has been a Top 20 airport for more than five years, annually serving more than 40 million and handling more than 189 million pounds of cargo.

5960 S. Jones Boulevard, Las Vegas, Nevada 89118  
(702) 388-1800 MAIN • (702) 388-1010 FAX  
www.mdlgroup.com

## Market Overview

# Southern Nevada Growth

200,000+

Number of jobs added between 2011 and 2019.

7,500+

Number of new businesses added between 2011 and 2019.

85%

Milestone graduation rate for Clark County school district in 2019.

## Innovation Ecosystem

- In 2016, **Las Vegas established an Innovation District** to spur smart-city technology infrastructure and launched the *International Innovation Center @ Vegas (IIC@V)* incubator to support development of high priority emerging technologies.
- The **Las Vegas-based Nevada Institute for Autonomous Systems** was designated in 2013 as one of six official unmanned aircraft systems (UAS) test sites in the United States, and the UNLV Tech Park has quickly emerged as a hub for regional innovation.
- In July 2019, **Google** broke ground on a \$600 million data center, and in October 2019 **Switch** announced a partnership with UNLV to support sports science R&D. Switch also expanded its footprint in Southern Nevada to ±4.6M SF of data center space.
- The **Las Vegas Convention and Visitors Authority (LVCVA)** partnered with the **Boring Company** to build a high-speed electric autonomous people mover for the Las Vegas Convention Center.

Source: Las Vegas Global Economic Alliance (LVGEA)

**MDLGroup**  
Service you deserve. People you trust.

**CORFAC**  
INTERNATIONAL  
MEMBER | PARTNER

Copyright © MDL Group. All rights reserved.



## Education & Workforce Development

Southern Nevada's post-secondary education and training institutions have significantly increased their offerings. Notably:

- The **University of Nevada, Las Vegas (UNLV)** doubled its research and development (R&D) performance over the last decade and reached R1 status in 2018, the highest classification for research universities. Additionally, the newly formed UNLV School of Medicine started class in 2017.
- **Nevada State College (NSC)** more than double its degree awards since 2011, with especially strong growth in awards to racial and ethnic minorities, and in health professions that support a key regional target industry.
- **College of Southern Nevada (CSN)** was named as a *Leader College of Distinction* by national non-profit network Achieving the Dream in 2019 for its work on improving student outcomes & reducing student achievement gaps.

6960 S. Jones Boulevard, Las Vegas, Nevada 89118  
(702) 388-1800 MAIN • (702) 388-1010 FAX  
[www.mdlgroup.com](http://www.mdlgroup.com)

## Disclaimer

This package is provided to you by MDL Group and is intended solely for your limited use and benefit in determining whether you desire to express further interest in purchasing the property described in the attached documentation (the "Property"). The providing of "this package" to you and your use thereof is conditioned upon your agreement to the terms set forth below.

This package contains selected information pertaining to the Property. It does not purport to be a representation of the state of affairs of the current owner, nor should it be construed to contain all or part of the information which prospective investors would deem necessary to evaluate the Property for purchase. Any financial projections and information provided are for general reference purposes only, are based on assumptions relating to the general economy, market conditions, competition, and other factors beyond the control of the current owner and MDL Group. All projections, assumptions and other information provided herein are subject to material variation. MDL Group has not independently investigated the accuracy of the information within the package, as such information was obtained from the owner and/or public records. Additional information and an opportunity to inspect the Property will be made available to interested and qualified prospective purchasers.

Neither the owner, MDL Group, nor any of their respective directors, officers, agents, affiliates, or representatives make any representation or warranty, expressed or implied, as to the accuracy or completeness of the information contained within this package or any supplemental information provided after the delivery of this package to you, and no legal commitment or obligation shall arise by reason of your receipt of this package or use of its contents. Please also refer to the disclaimer at the bottom of each page of this package, which disclaimer is incorporated herein by reference.

You should understand and be advised that the owner of the Property expressly reserves the right, at their sole discretion, to reject any or all expressions of interest or offers to purchase the Property, and/or to terminate discussions with you or any other party at any time with or without notice which may arise as a result of this package. The owner shall have no legal commitment or obligation to you or any other party reviewing this package, nor shall the owner be required to accept an offer to purchase the Property unless and until written agreement(s) for the purchase of the Property have been fully executed, delivered, and approved by the Owner.

By receipt of "this package", you agree that the package and its contents are of a confidential nature, that you will hold and treat it in the strictest confidence and that you will not disclose the package or any of its contents to any other entity without the prior written authorization of owner. You also agree that you will not use the package or any of its contents in any manner detrimental to the interest of the owner or MDL Group.

This package describes certain documents including leases and other materials, which documents are described in summary form only. These summaries do not purport to be complete, nor necessarily accurate descriptions of the full agreements referenced. Interested parties are expected and advised to review all such summaries and other documents of whatever nature independently with legal counsel, tax and other professionals of their choice who have the expertise to assist in investigating this information in detail. You are therefore advised not to rely solely on the package as part of your investigations on this Property. If you have no interest in further pursuing this Property, please return this package to MDL Group.

*Although the information has been obtained from sources deemed reliable, Owner, MDL Group, and / or their representatives, brokers or agents make no guarantee as to the accuracy of the information contained herein, and offer the Property without express or implied warranties of any kind. The Property, Units and / or Rates may be withdrawn and/or changed without notice.*




  
Service you deserve. People you trust.

  
CORFAC  
INTERNATIONAL  
MEMBER | PARTNER

## INVESTMENT SALES TEAM

**Buck Hujabre**  
Senior Vice President  
Lic#: BS.1002453 LLC  
225.284.0985  
bhujabre@mdlgroup.com

**Brendon Pereira**  
Associate  
Lic#: S.0203564  
702.415.3683  
bpereira@mdlgroup.com

 5960 S. Jones Boulevard, Las Vegas, Nevada 89118  
 (702) 388-1800 MAIN • (702) 388-1010 FAX  
 [www.mdlgroup.com](http://www.mdlgroup.com)



Service you deserve. People you trust.



LAS VEGAS, NEVADA



SALT LAKE CITY, UTAH



[WWW.MDLGROUP.COM](http://WWW.MDLGROUP.COM)

