

101MONTGOMERY




Jones Lang LaSalle Brokerage, Inc.
Real Estate License #: 01856260












Galfox, Inc.
real estate investment company

About 101 Montgomery

-  Built and owned by the Cahill Family
-  Class A Building
-  294,146 RSF
-  Located in the heart of San Francisco's Financial District

Building Features

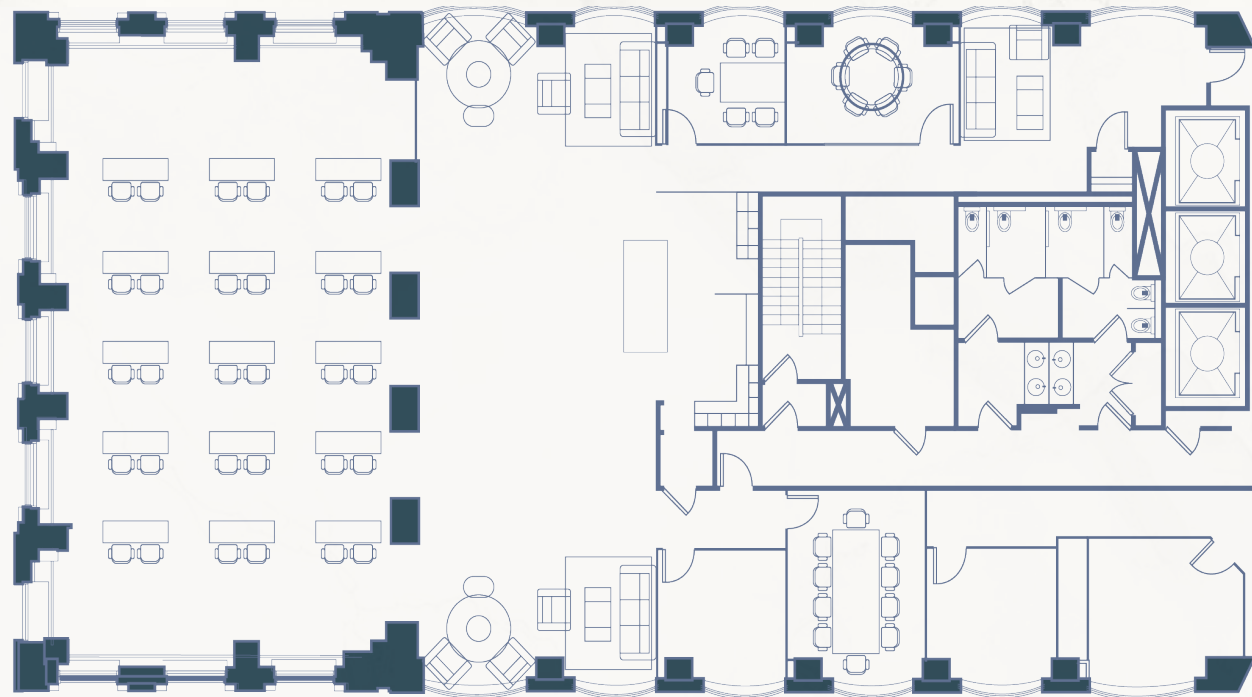
-  Stunning bay views
-  Centrally located 1 block from Montgomery St BART/Muni station
-  Certified LEED gold
-  Energy star certified
-  On-site parking
-  Two EV charging stations
-  Secured bike storage
-  Security 24/7
-  On-site property management



Built, owned & operated by the Cahill family, **shaping San Francisco since 1911.**

Experience Club 101

An integrated suite of dynamic spaces, exclusive to building tenants, designed to elevate how teams meet, learn, and collaborate.



Flexible All-Hands / Training Room



Multiple Private Meeting Rooms

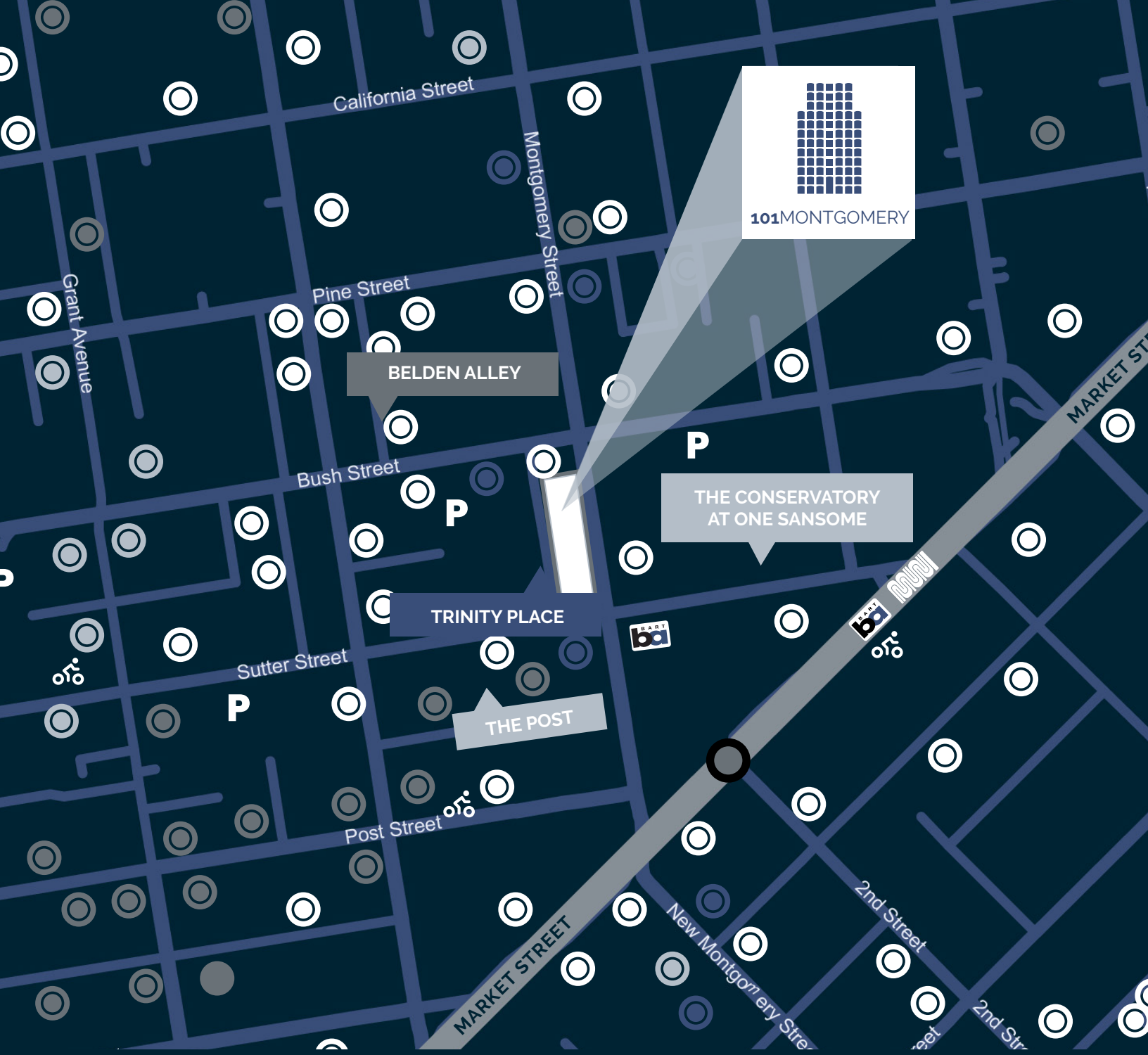


Communal Kitchen



Collaboration Spaces





Nearby Amenities

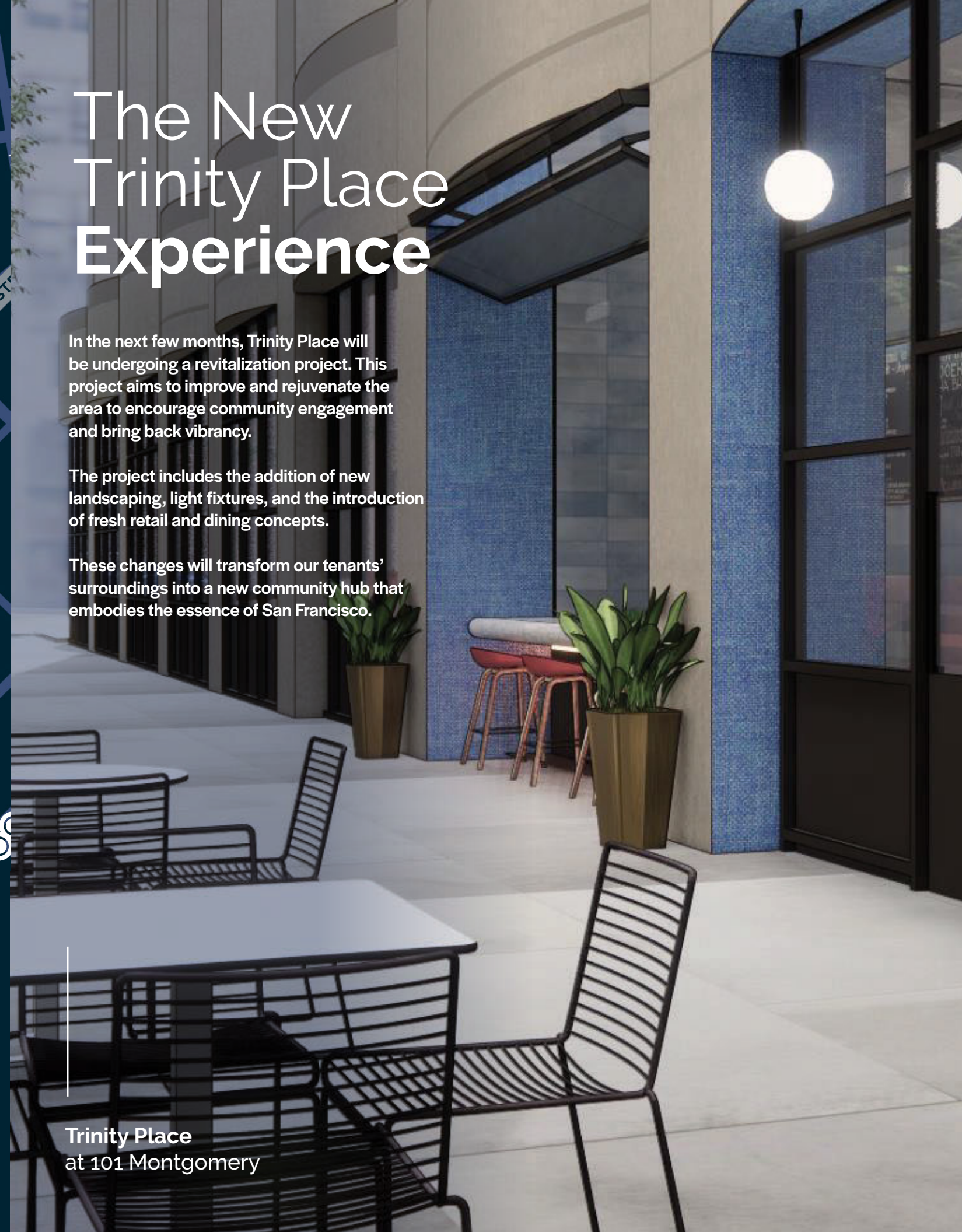
- | | |
|--------------------|--|
| ⊙ Restaurants/Bars | LOCAL HIGHLIGHTS |
| ⊙ Retail | ▬ Belden Alley |
| ⊙ Hotels | ▬ The Conservatory at One Sansome |
| ⊙ Fitness | ▬ Trinity Place |
| P Parking | ▬ The Post - Formerly Crocker Galleria |
| 🚲 Bike Share | |

The New Trinity Place Experience

In the next few months, Trinity Place will be undergoing a revitalization project. This project aims to improve and rejuvenate the area to encourage community engagement and bring back vibrancy.

The project includes the addition of new landscaping, light fixtures, and the introduction of fresh retail and dining concepts.

These changes will transform our tenants' surroundings into a new community hub that embodies the essence of San Francisco.



Trinity Place at 101 Montgomery

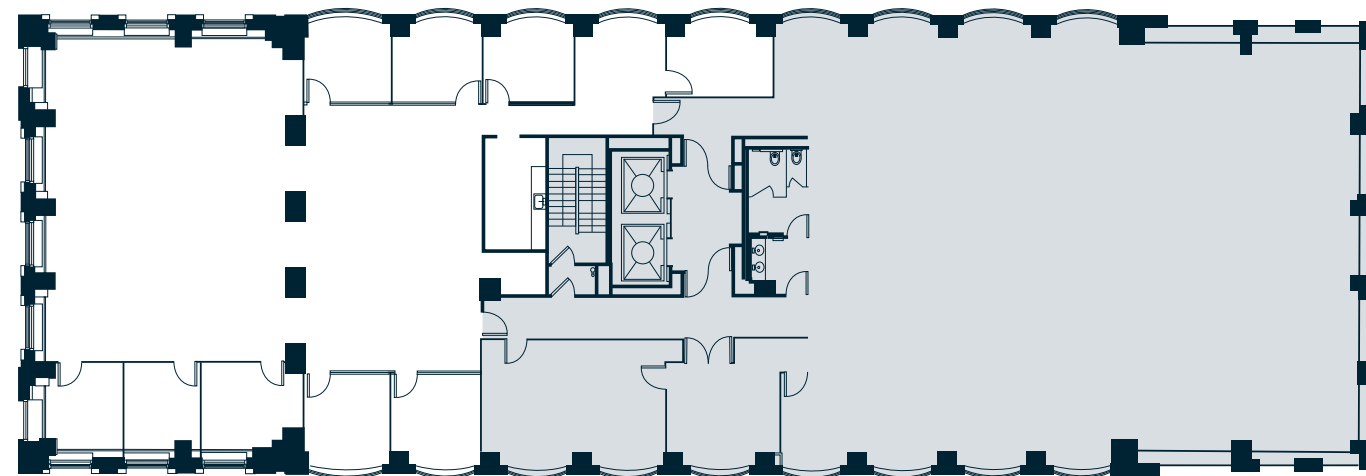
Convenience
Only Steps Away



Coffee Bar

La Fromagerie

Chase Bank

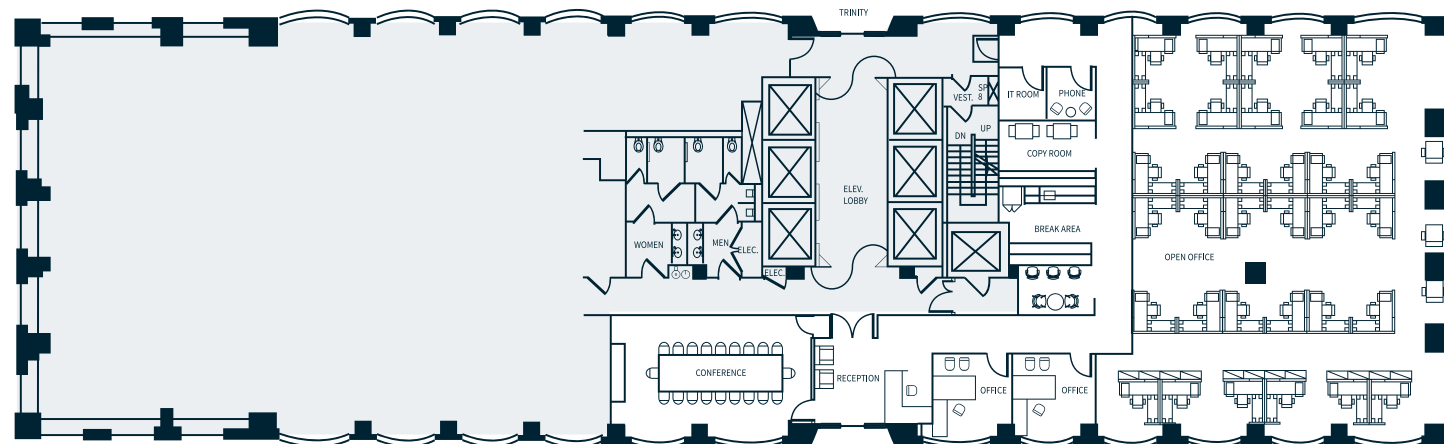


Suite 400

AVAILABLE NOW

- 9 Meeting rooms / private offices
- Kitchen

5,492 RSF



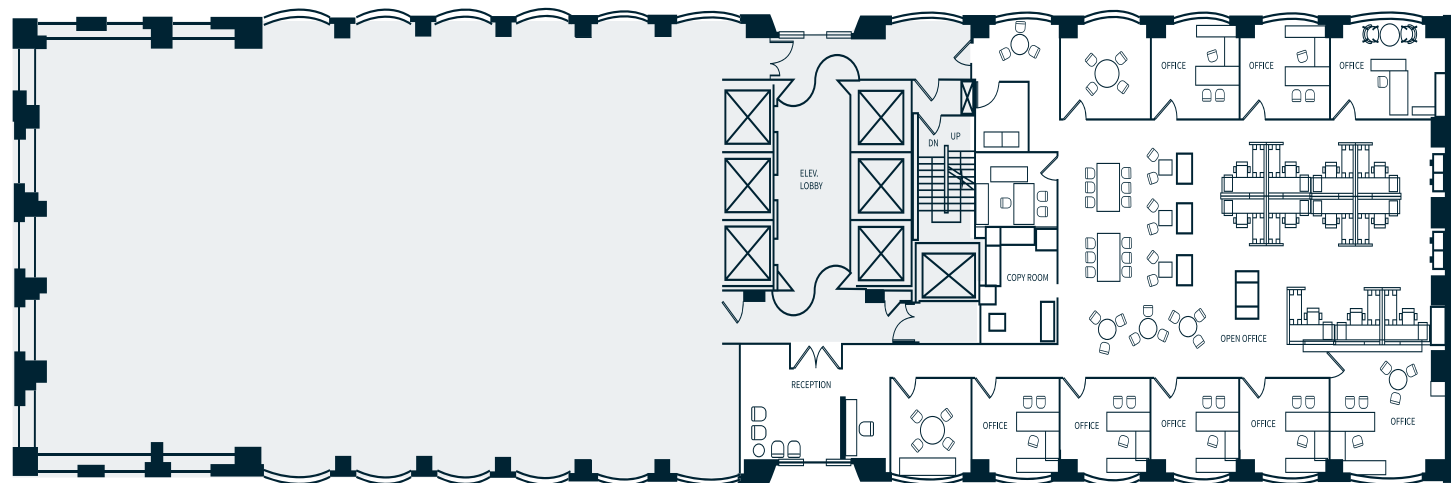
Suite 500

AVAILABLE NOW

- Highly creative suite with xposed ceilings and polished concrete
- Large open space
- Two private offices
- One boardroom
- Kitchen
- Phone room

6,051 RSF





Suite 600

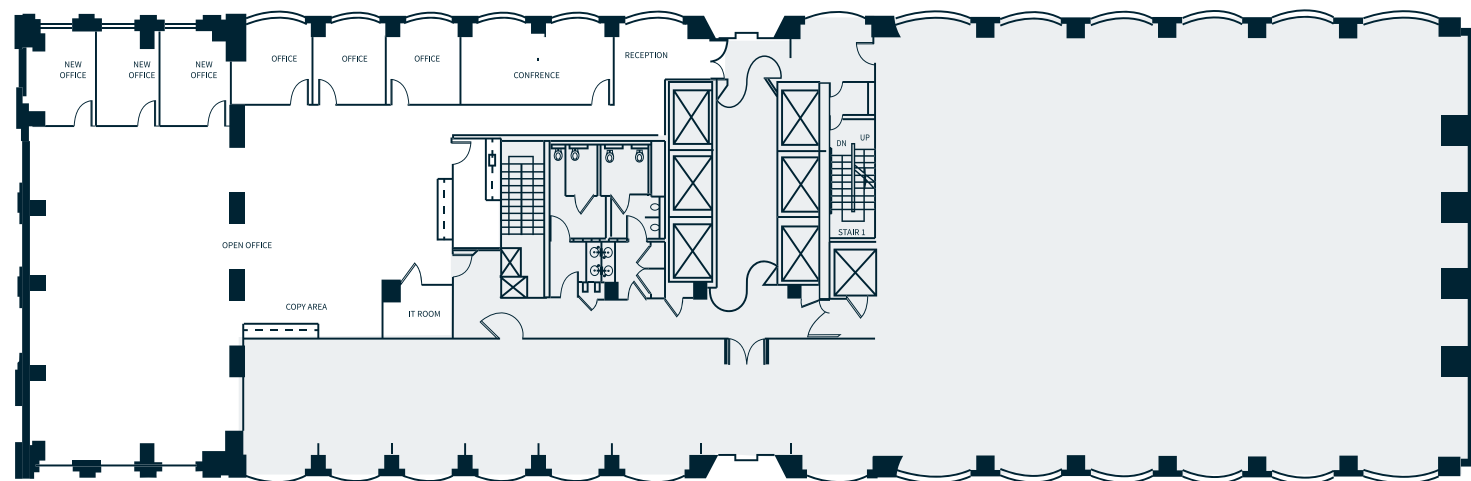
5,452 RSF

AVAILABLE NOW

- Open office
- Reception
- Kitchenette / Copy room
- 2 conference rooms
- 9 private offices



TAKE THE VIRTUAL TOUR



Suite 750

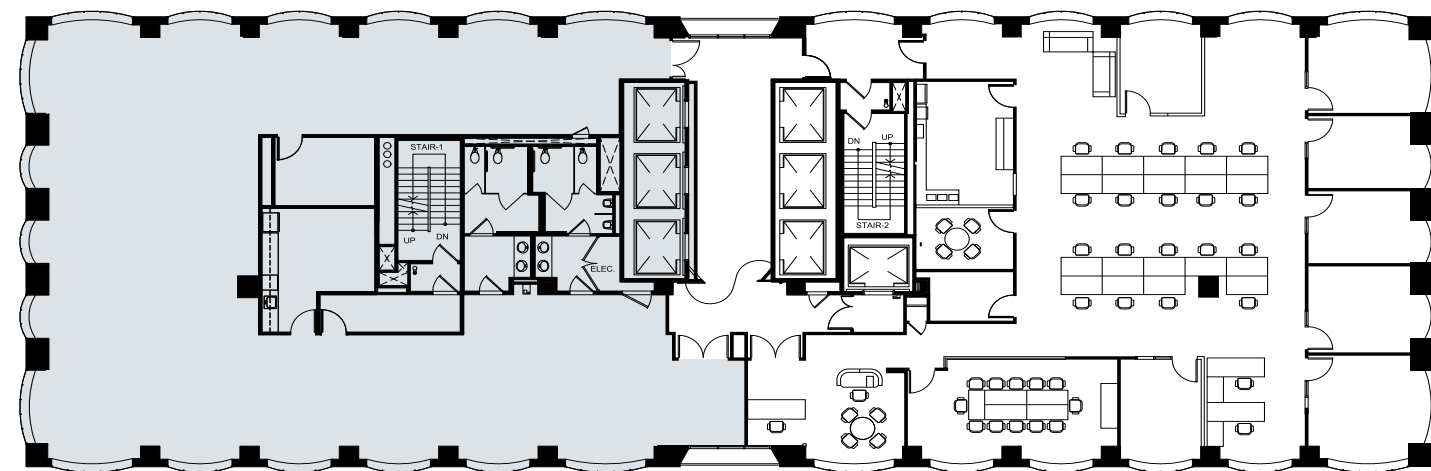
5,324 RSF

AVAILABLE NOW

- Open space
- 6 private offices
- 1 large conference room
- Reception
- IT room
- Kitchen



TAKE THE VIRTUAL TOUR



Suite 1900

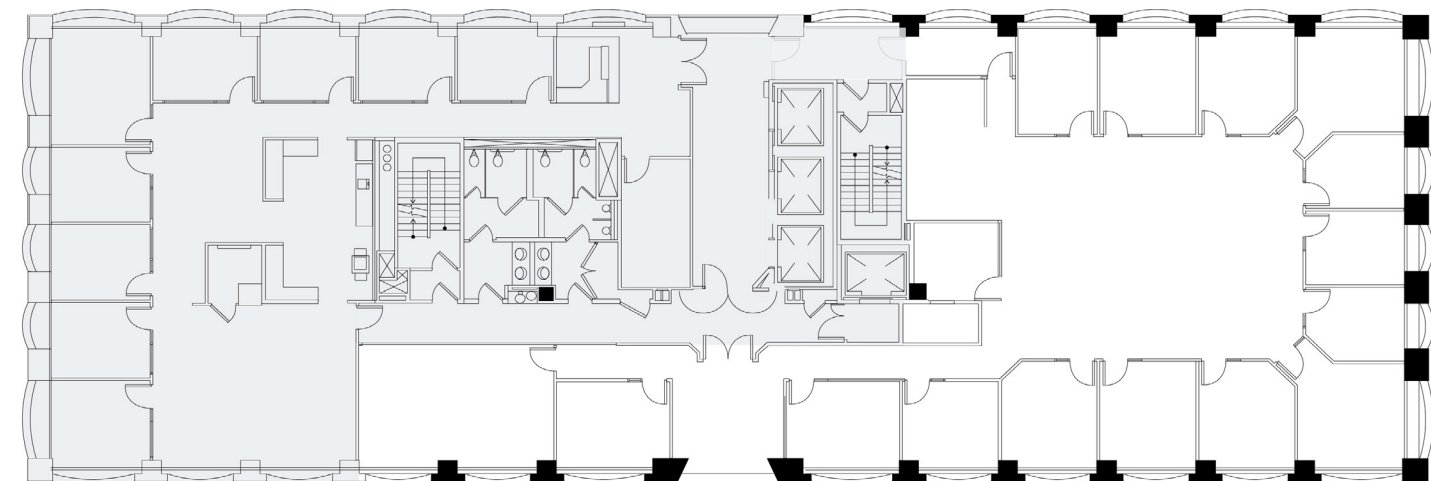
5,334 RSF

AVAILABLE NOW

- 8 meeting rooms
- 1 conference room
- Open space for workstations
- Kitchen



Northern and Southern facing bay views including protected views of Union Square



Suite 2100

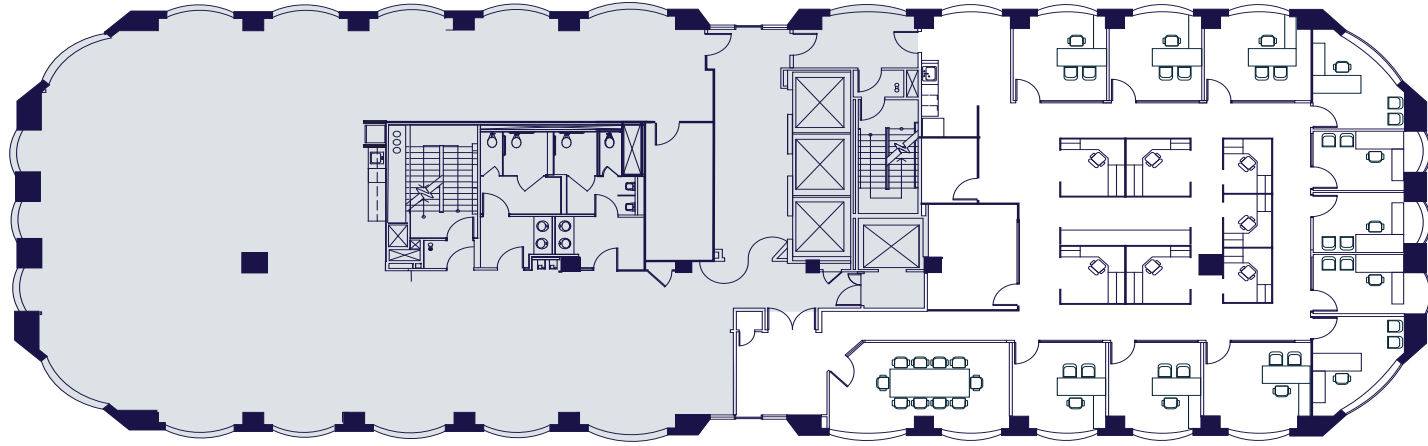
6,355 RSF

AVAILABLE NOW

- 14 private offices
- 1 large conference room
- Open space
- 1 meeting room
- Kitchen/break room



Northern and Southern facing views, including protected views of Union Square




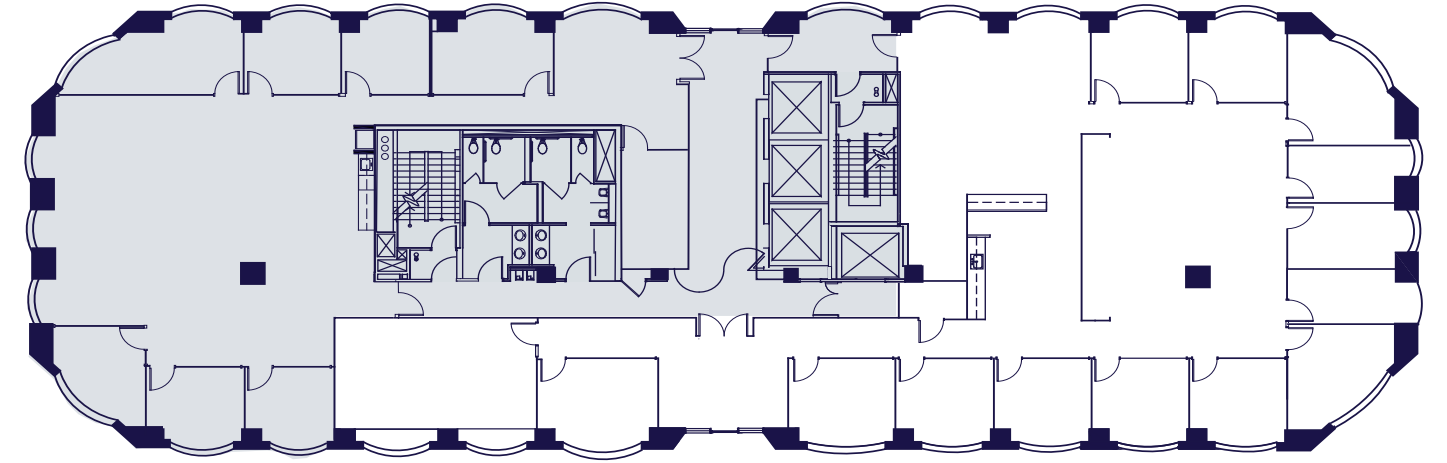
Suite 2600

AVAILABLE IN 30 DAYS

- 11 Private Offices
- 1 Conference Room
- Kitchenette / Lounge Area
- 7 Workstations

5,174 RSF

 Northern and Southern facing bay views including protected views of Union Square



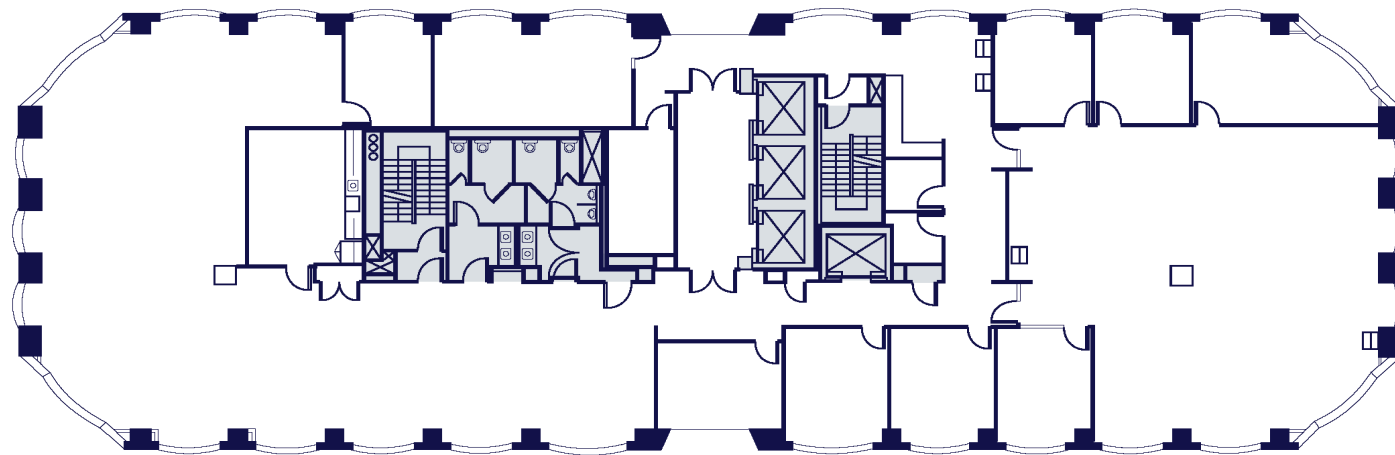
Suite 2800

AVAILABLE NOW

- 11 private offices
- 2 meeting rooms
- 1 conference room
- Kitchen/break area
- Server room

6,223 RSF

 Northern facing bay views



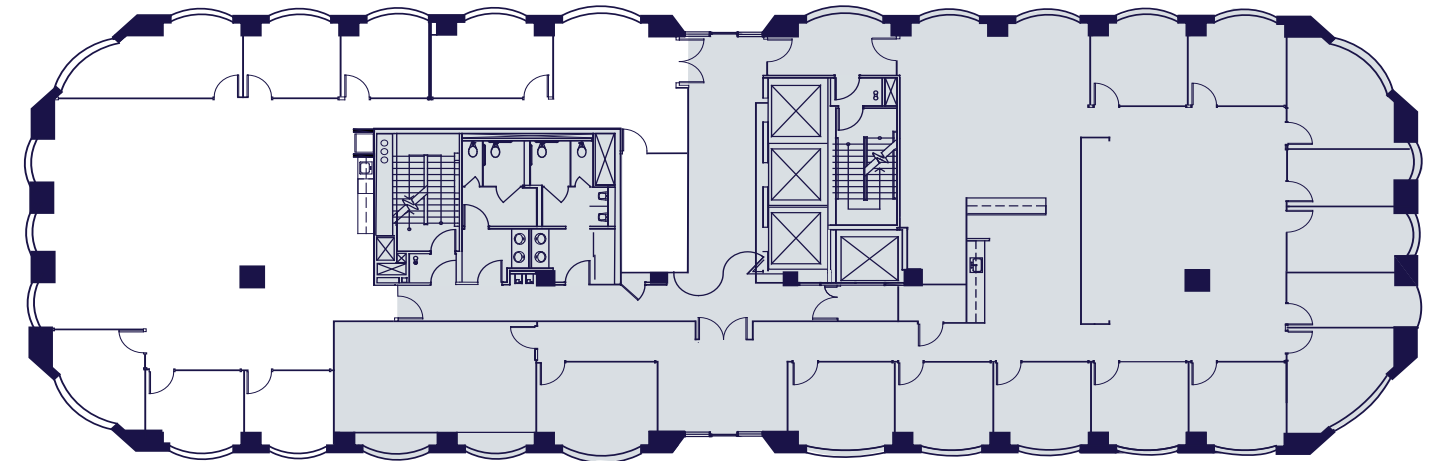
Suite 2700

AVAILABLE NOW

- Full floor
- 5 private offices
- 2 conference rooms
- Kitchen/break area
- 2 phone rooms
- IT/storage closet

10,170 RSF

 Northern and Southern facing bay views including protected views of Union Square




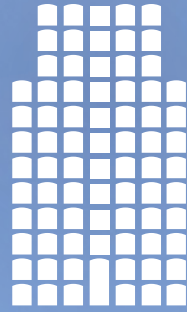
Suite 2850

AVAILABLE NOW

- Open space
- 6 private offices
- 1 conference room
- Kitchen/break area
- Reception area

3,947 RSF

 Southern facing bay views including protected views of Union Square



101MONTGOMERY

Tom Doupe
Executive Vice President
+1 415 395 4933
tom.doupe@jll.com
RE License #01921218

Teva Myatt
Senior Associate
+1 415 395 7290
teva.myatt@jll.com
RE License #02198058



Although information has been obtained from sources deemed reliable, JLL does not make any guarantees, warranties or representations, express or implied, as to the completeness or accuracy as to the information contained herein. Any projections, opinions, assumptions or estimates used are for example only. There may be differences between projected and actual results, and those differences may be material. JLL does not accept any liability for any loss or damage suffered by any party resulting from reliance on this information. If the recipient of this information has signed a confidentiality agreement with JLL regarding this matter, this information is subject to the terms of that agreement.
©2026 Jones Lang LaSalle Brokerage, Inc. All rights reserved.