

3201

WILSHIRE BLVD.
SANTA MONICA, CA

OFFICE/THERAPY SPACE



293 - 1,565 SF AVAILABLE

NAI Capital
COMMERCIAL REAL ESTATE SERVICES, WORLDWIDE

Joseph Gabbai
Executive Vice President
310.806.6134
jgabbai@naicapital.com
Cal DRE Lic #01016301

Property Features

- CALL BROKER FOR RENTAL RATES
- 3-story modern office/medical building
- Large courtyard with lush landscaping
- Ample subterranean parking
- Easy access to the 405 freeway
- Within walking distance of many restaurants and other amenities

Asking Rate

Call Broker

Lease Terms

1 to 5 Years

Tenant Improvements

Negotiable

Parking

3/1,000 SF
\$180/Mo. (Reserved)
\$150/Mo. (Unreserved)

Availability

Suite 202 Therapy	1,565 SF	Negotiable	Four window therapy offices, reception/waiting area
Suite 209-3 Office	294 SF	Negotiable	Single window therapy room within a larger therapy office with waiting area/kitchen
Suite 209-7 Office	293 SF	Negotiable	Single window therapy room within a larger therapy office with waiting area/kitchen
Suite 320-A Office	591 SF	Negotiable	Single window therapy room with a private balcony within a larger therapy office with waiting area/kitchen



3201

WILSHIRE BLVD.
SANTA MONICA, CA

OFFICE/THERAPY SPACE

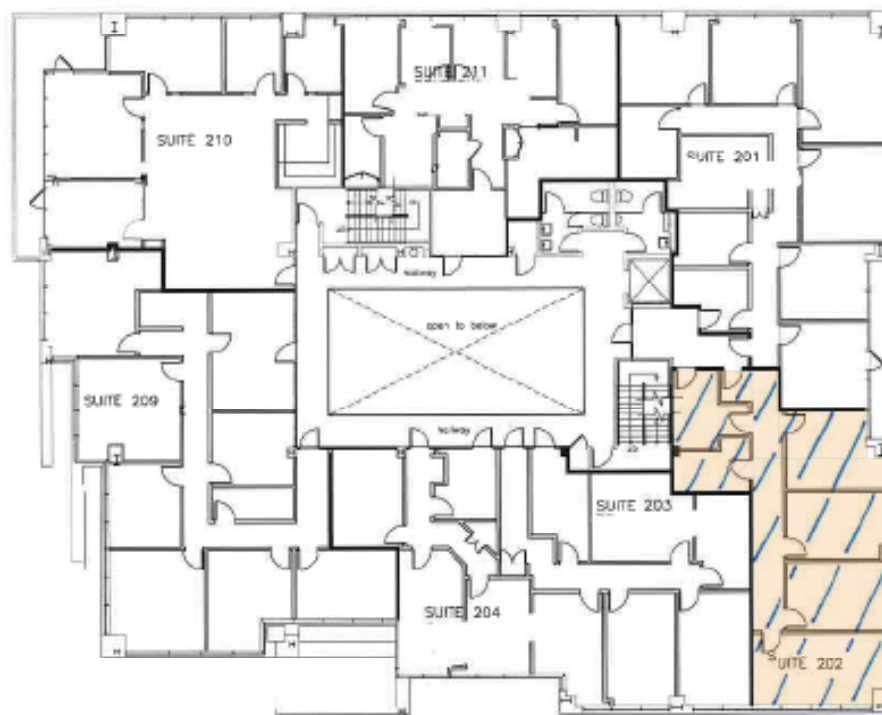


3201

WILSHIRE BLVD.
SANTA MONICA, CA

THERAPY SPACE

Suite 202
1,565 SF



WILSHIRE BOULEVARD

SECOND FLOOR PLAN
RENTABLE AREAS

3201

WILSHIRE BLVD.
SANTA MONICA, CA

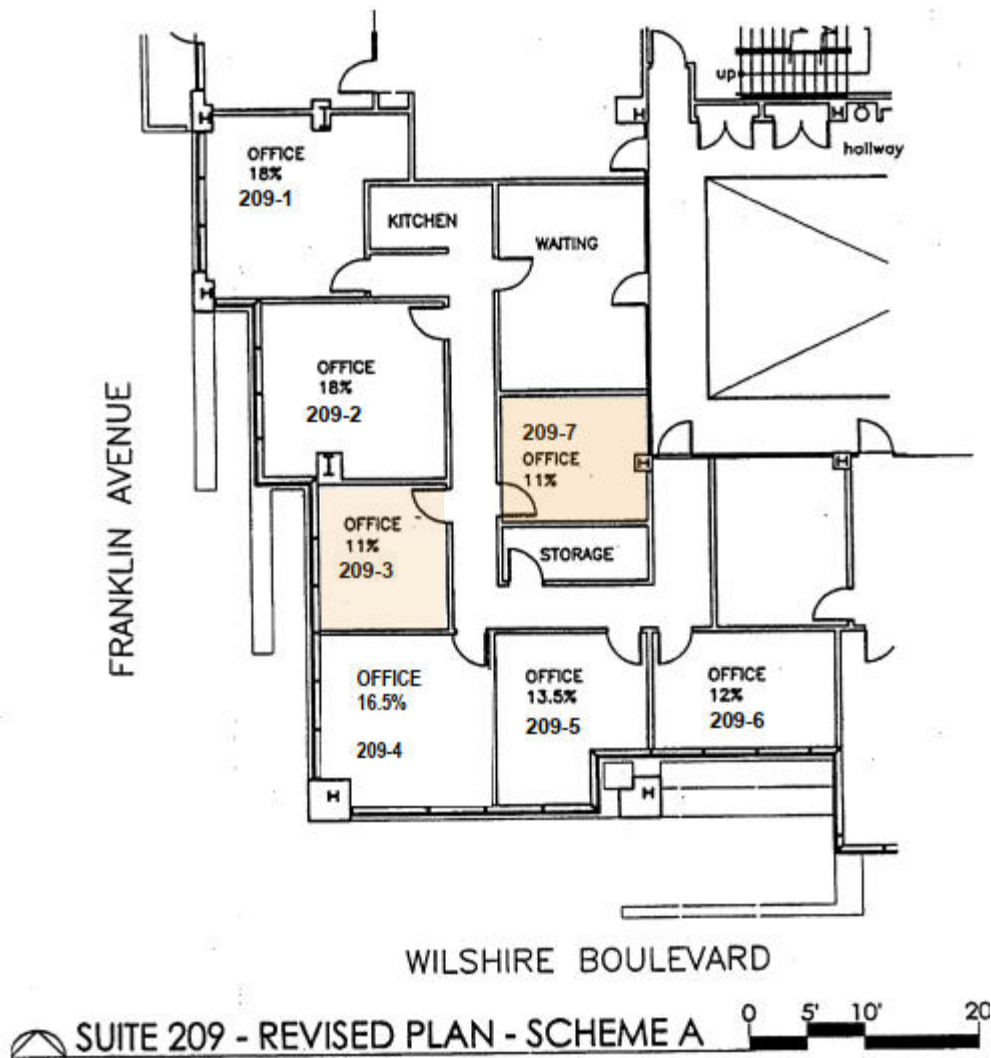
THERAPY SPACE

Suite 209-3

294 SF

Suite 209-7

293 SF



3201

WILSHIRE BLVD.
SANTA MONICA, CA

THERAPY SPACE

Suite 320-A
591 SF



SUITE 320 - FLOOR PLAN