

Market Street Retail Space Available For Lease
1441 Market Street
Tallahassee, Florida 32308



Exclusively Offered By
Jeff Billingsley
Broker-Associate
850 668-3333 or 850 556-2147
jbillingsley@johnnyblurealty.com

While this information is deemed to be correct, no guarantee is given as to its accuracy. Buyer should independently verify all information.

All Photos are the Property of Craig Commercial Realty and shall not be used or reproduced without permission.

Executive Summary

1441 Market Street Tallahassee, Florida



The Gallery at Market Street is a boutique retail center located in the highly sought after Market Street retail district in NE Tallahassee. The available space is a hard to find 1,200 square foot suite in one of the most visible areas in the "Gallery". The Market Street District is one of Tallahassee's most desired retail areas and is close to popular restaurants, retail businesses, fitness centers, as well as some of the most popular neighborhoods in Tallahassee including Killlearn, Maclay Hammock, Bobbin Brook, and more. Additionally, the City of Tallahassee is completing a multi-phase repurposing of the City owned property off of Maclay Commerce Drive to include a Central Park with paved fitness trails, pickleball courts, gathering spaces and more.



- **1,200 Sq. Ft. Unit**
- **Recently Remodeled Suite**
- **Great Visibility on Market Street**
- **Great Retail Tenant Mix in the Area**
- **Open Floor Plan Adaptable To a Variety of Concepts**
- **1 Bathrooms**
- **First Floor**
- **Ample Parking**
- **Ideal for Specialty Retail, Beauty/Spa, and any other concepts.**

Lease Rate: \$29.00 per sq. ft. NNN

Craig Commercial Realty 3360 Capital Circle Northeast, Suite A, Tallahassee, Florida 32308
Phone: (850) 668-3333 Fax: (850) 668-4756

While this information is deemed correct, no guarantee is given as to its accuracy. Buyer should verify information.



1441 Market Street Interior





1441 Market Street Interior



1441 Market Street Interior



1441 Market Street Interior



1441 Market Street Interior



1441 Market Street Interior

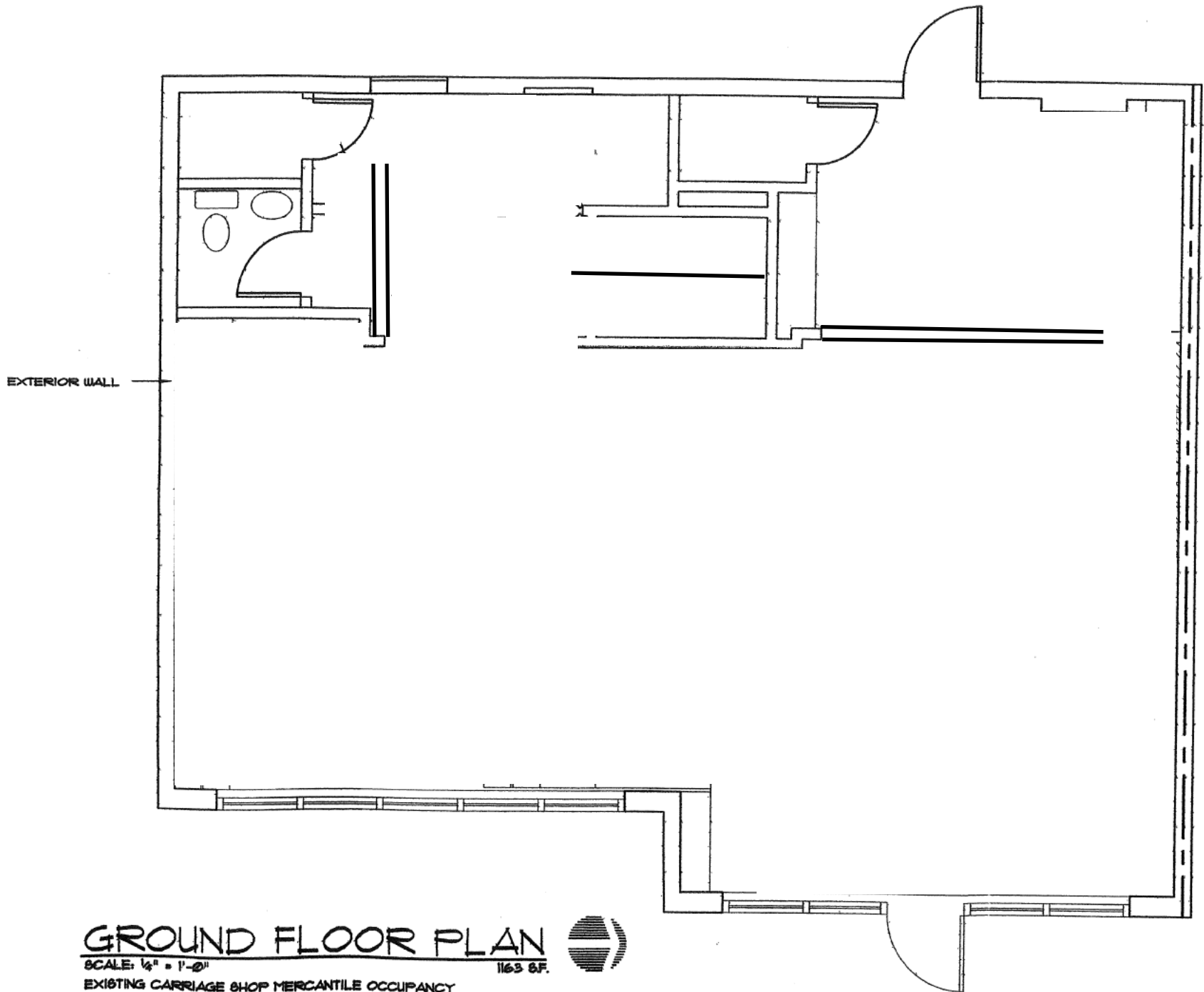


1441 Market Street Interior-Office



1441 Market Street Interior-Bathroom





GROUND FLOOR PLAN
SCALE: 1/4" = 1'-0"
1163 SF.
EXISTING CARRIAGE SHOP MERCANTILE OCCUPANCY

