



48 George Street, London, W1U 7DY

Located in the heart of Marylebone, 48 George St is an ideal space for tenants looking for a simple solution to their office needs. In addition to being located in one of central London's most desired districts, the building has huge windows and good natural light. The self-contained 2nd floor features all one needs: fully furnished space for up to 16, 2x boardrooms, 2x exec offices, break out space and more.



24hr access



Air-con



Lounge area



Dedicated IT line



Disabled access



Furnished



Kitchen



Lifts



Meeting rooms



Reception

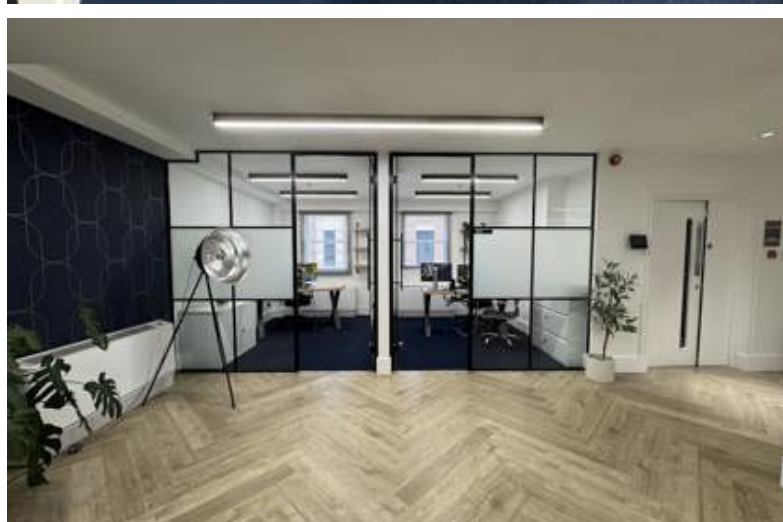


EPC Rating: C



Image gallery

[More Images](#)





Nearest transport

bus_station

George Street (Stop J)
1 minute walk

bus_station

Dorset Street (Stop R)
6 minute walk

bus_station

Portman Street (Stop N)
5 minute walk

subway_station

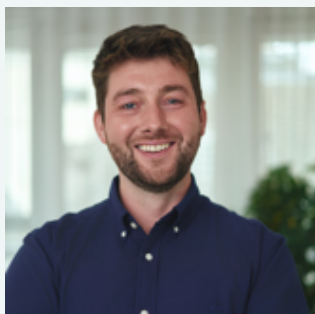
Marble Arch
8 minute walk

Why we love...

48 George Street is an ideal space for tenants who are looking for an easy office solution to their office requirement!



Dan
Co-Head of Workthere UK



Tom Leahy
Co-Head of Workthere UK

✉ tom.leahy@workthere.com

☎ 07955 147734



Jodie Burwood
Senior Landlord Advisory

✉ jodie.burwood@workthere.com

☎ 07939 890689



Holly Pollock
Senior Landlord Advisory

✉ holly.pollock@workthere.com

☎ 07946 609706

Floor Information

[Download floorplan](#)

	Monthly price	Max Desks	Size (sqft)	Price per sqft	Availability	Term
2nd Floor	£32,463	16	1,855	£210	Now	24m+