

for **SUBLEASE**

## **PLUG N' PLAY SPACE**

**Christian C. Holland** | Managing Director | [holland@westmac.com](mailto:holland@westmac.com) | 310.966.4350 | DRE# 00942434

**WESTMAC Commercial Brokerage Company** | 1515 S Sepulveda Boulevard, Los Angeles, CA 90025 | [www.westmac.com](http://www.westmac.com)

# PROPERTY OVERVIEW

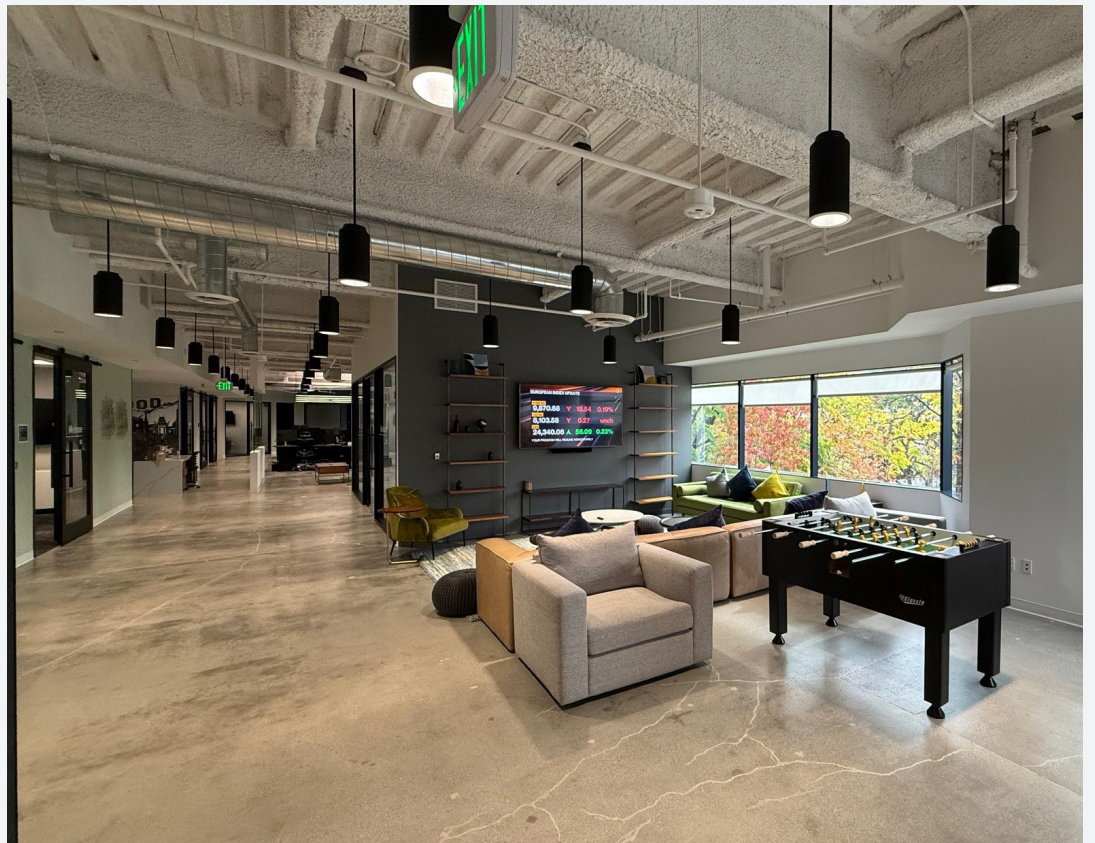
---

---

## SPECIFICATIONS

|                   |   |
|-------------------|---|
| <b>ADDRESS</b>    | 300 Corporate Pointe,<br>Culver City, CA 90230            |
| <b>OCCUPANCY</b>  | Immediate occupancy                                       |
| <b>TERM</b>       | Through 9/30/2027   |
| <b>SPACE</b>      | Approximately 5,763 square feet<br>suite #220             |
| <b>RATE</b>       | \$2.95 per square foot, per month,<br>full service gross  |
| <b>PARKING</b>    | Eighteen (18) monthly spaces                              |
| <b>FF &amp; E</b> | Fully furnished Plug N' Play. Can<br>provide entire list. |





## COMMENTS

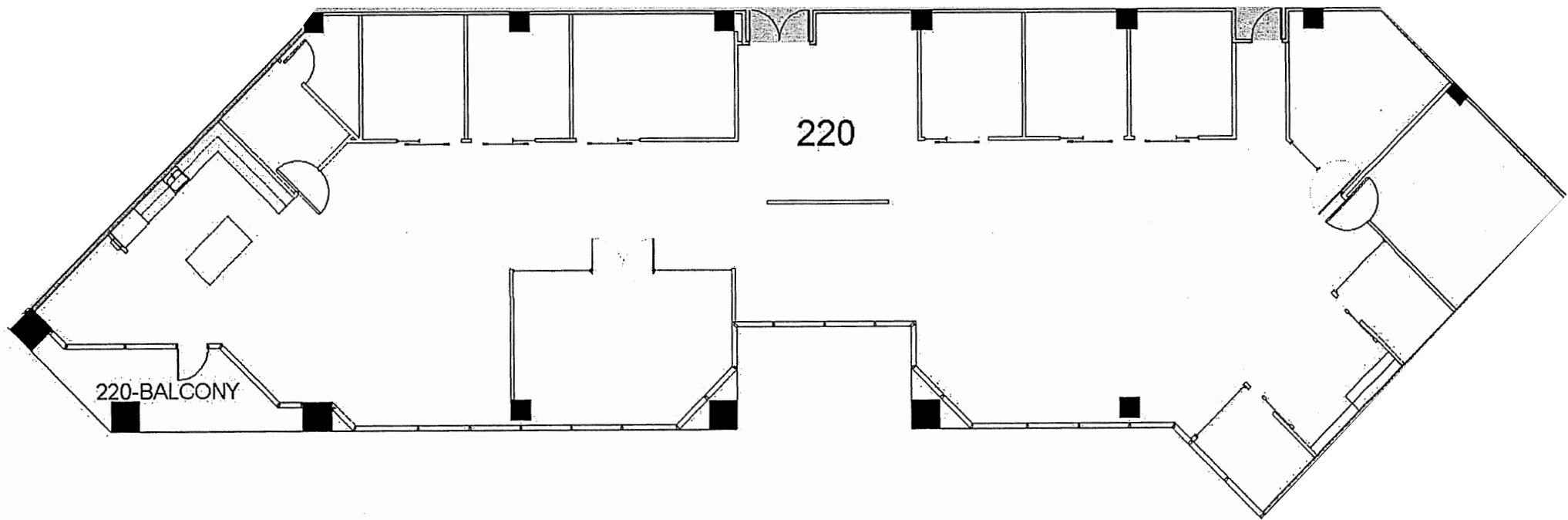
- Pearl X is the sub-lessor (financially secure)
- Culver Pointe, LLC (Olive Hill) is the master lessor
- Parking atmosphere at 200/300 corporate pointe
- Onsite food/restaurant/fitness/meeting area and more
- Fantastic natural light throughout the space
- High ceilings with a mix of exposed and hard lit finishes



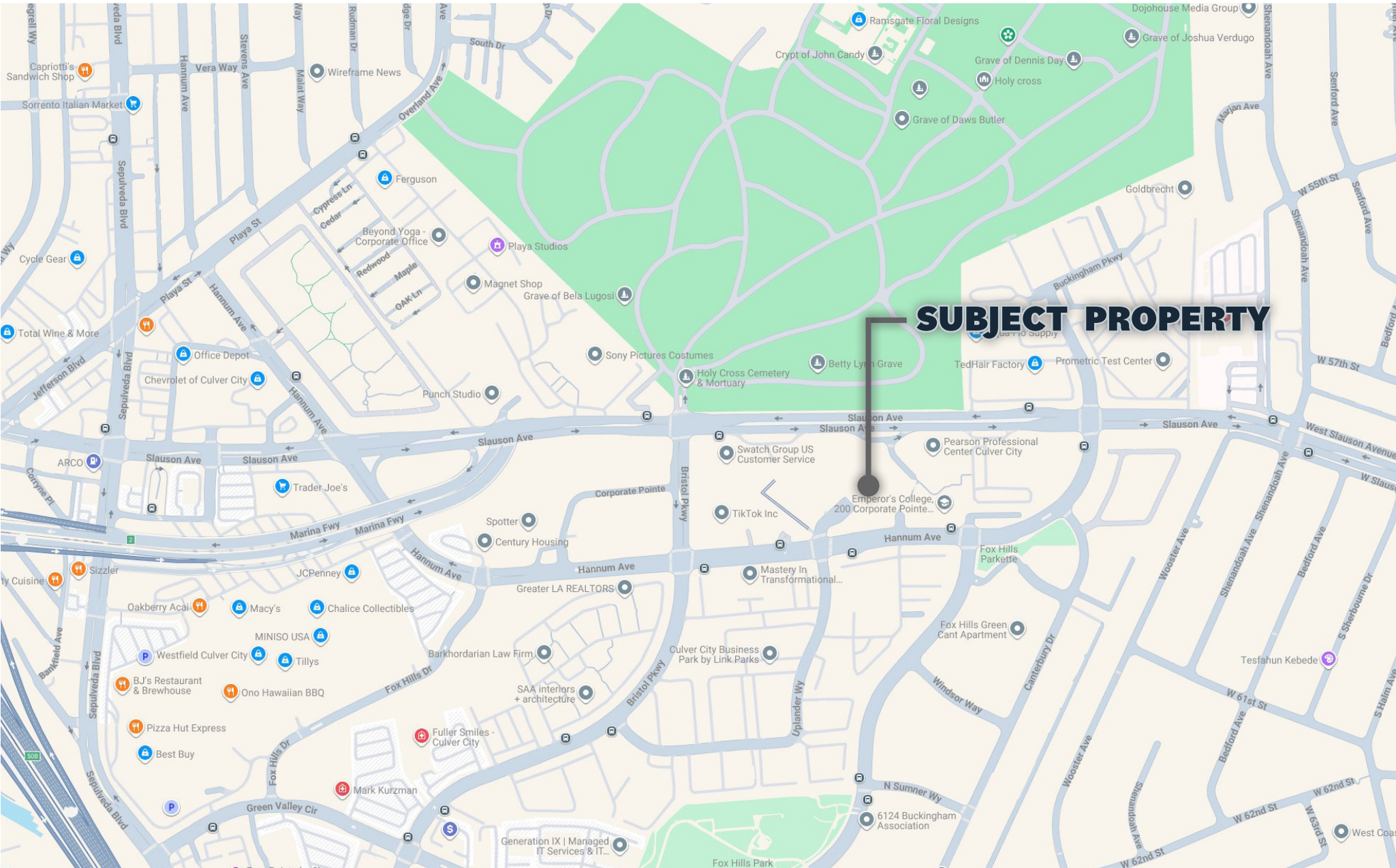
# FLOOR PLAN

---

---



# WALKABLE AMENITIES



# CONTACT

**CHRISTIAN HOLLAND**  
MANAGING DIRECTOR

310-478-7700 ext. 350  
holland@westmac.com  
DRE# 00942434

**WESTMAC**  
Commercial Brokerage Company

**WESTMAC Commercial  
Brokerage Company**

1515 S Sepulveda Boulevard  
Los Angeles, CA 90025

Company DRE# 01096973  
310.478.7700  
www.westmac.com



©2026 WESTMAC Commercial Brokerage Company. All Rights Reserved. WESTMAC Commercial Brokerage fully supports the principles of the Equal Opportunity Act. WESTMAC Commercial Brokerage Company and the WESTMAC Commercial Brokerage Company logo are registered service marks owned by WESTMAC Commercial Brokerage Company and may not be reproduced by any means or in any form whatsoever without written permission.

We obtained the information contained in this memorandum from sources we believe to be reliable. However, we have not verified its accuracy and make no guarantee, warranty or representation about it. It is submitted subject to the possibility of errors, omissions, change of price, rental or other conditions, prior sale, lease or financing or withdrawal without notice. We include projections, opinions, assumptions or estimates for example only, and they may not represent current or future performance of the property. You and your tax and legal advisors should conduct your own investigation of the property and transaction.