

ARG

For Lease



346 Grand St

Dual Level Retail Space For Lease In Williamsburg

2,500 sq ft | 346 Grand St | Brooklyn, NY 11211



PROPERTY DETAILS



OVERVIEW

- **Address:** 346 Grand St, Brooklyn, NY 11211
- **Cross Streets:** Havemeyer and Marcy Ave
- **Neighborhood:** Williamsburg

SPACE DETAILS

- **Size:** 2,500 sq ft
- **Ceiling Height:** 12 ft
- **Frontage:** 50 ft

HIGHLIGHTS

- Dual level retail with double frontage
- Lower Level perfect for office/storage
- HVAC in place
- ADA restrooms in place
- High Ceilings

TRANSPORTATION

- 🚌 5 min walk to B24, Q59
- 🚇 6 min walk to train J, M, Z
- 📍 15 min drive to LGA, 25 min drive to JFK, 35 min drive to EWR

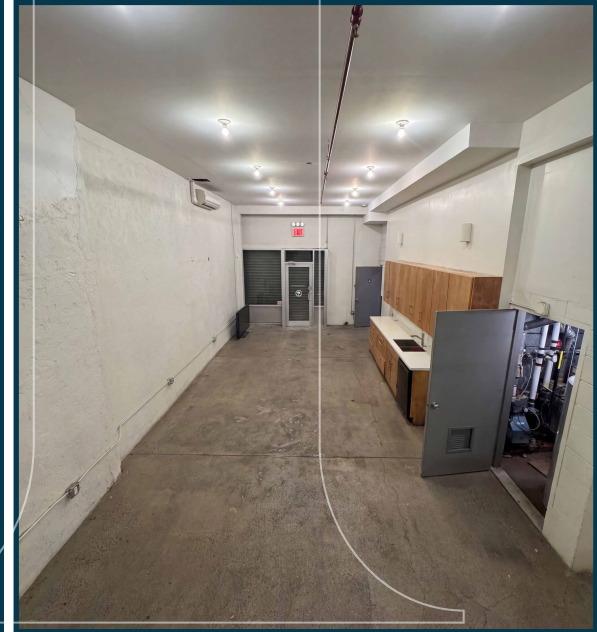
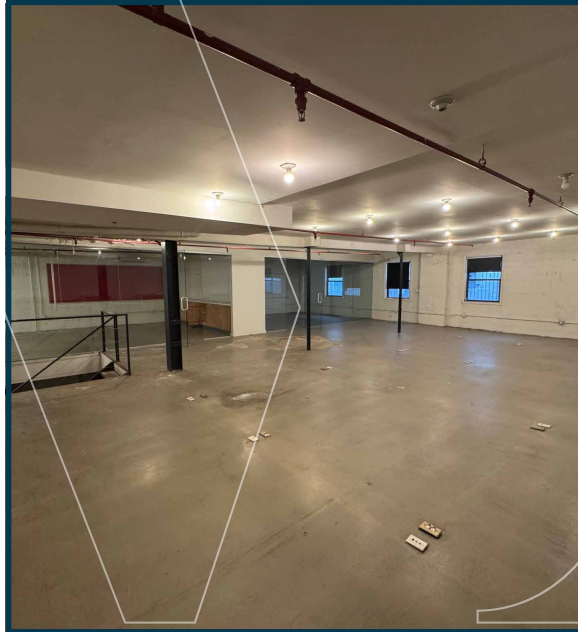
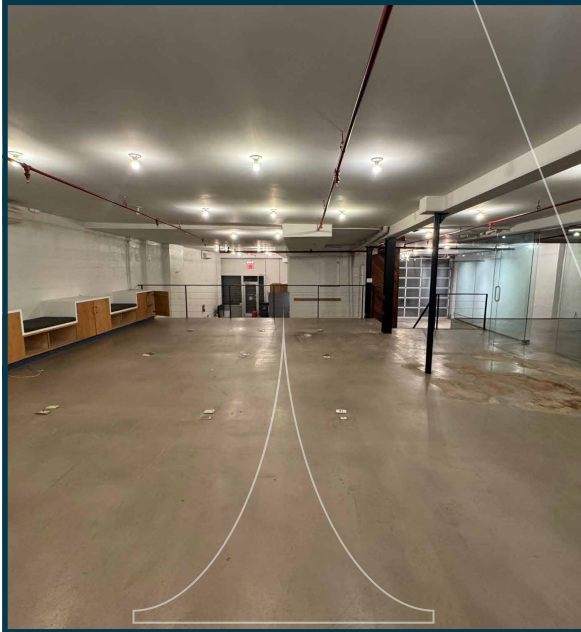
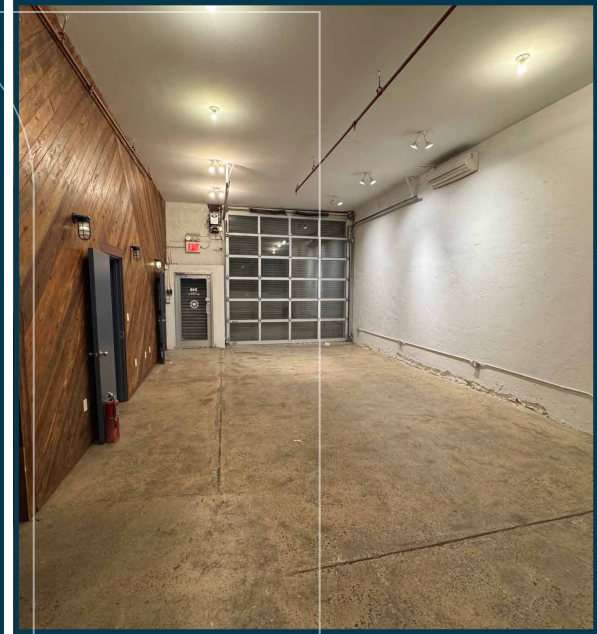
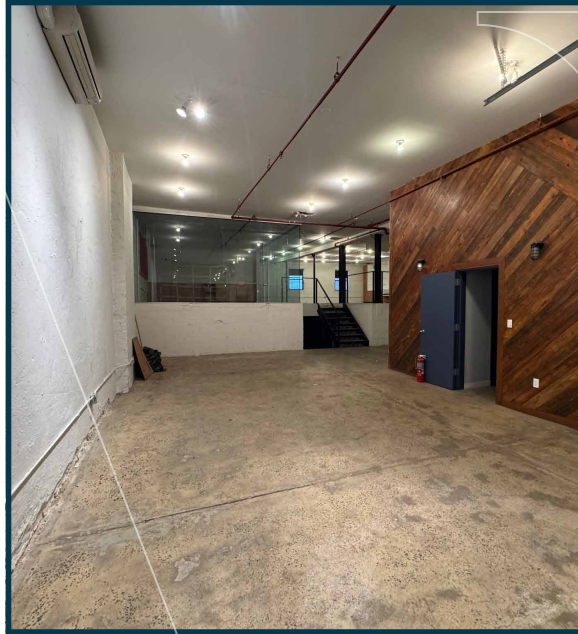
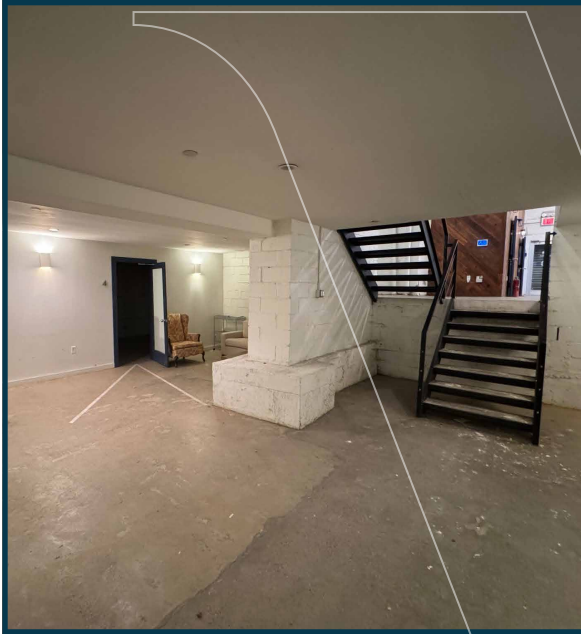
DEMOGRAPHICS

- **Population:** 178,282
- **Median Household Income:** \$84,337
- **Median Home Value:** \$1,020,140

NEIGHBORS

Leo, Fred's Dog House, Iwak Sushi + Kitchen, Casa Andrea, Recess Grove, Echo Lake, Recette, About Glamour, The Collectors Bar, Twenty Sided, I Cavallini, The Four Horsemen, F45 Training Williamsburg North, Maracuja, Midway, De Mole Brooklyn, Tabú – Williamsburg, PPL, CTown Supermarkets, Tabare Williamsburg, Clem's, Starbucks, Sweetgreen, Blue Bottle Coffee, Think Coffee, Oslo Coffee Roasters, Checkers, Capital One Bank

INTERIOR PHOTOS



Dual Level Retail Space In Williamsburg For Lease

MRG

346 Grand St Brooklyn, NY 11211

FOR MORE INFORMATION
PLEASE CONTACT:

EDDIE KEDA

212-314-4684 Ext. 104

Eddie@mrgny.com

