



330 Bay Street, Suite 601 Toronto ON

Office Space available in **Financial District** For Sublease

Tom Muha*

Vice President
+1 416 620 6104
tom.muha@colliers.com

Charu Mahant

Sales Representative
+1 416 620 2338
charu.mahant@colliers.com



Accelerating success.

Property Overview

Civic Address 330 Bay Street, Toronto

Description

- Fully furnished
- Located at Bay & Adelaide in the heart of Toronto's Financial District
- Building was completed in 1926 by prominent local architectural firm Chapman & Oxley
- Minutes from Eaton Centre, hotels, restaurants and the PATH system
- Built out with reception area, meeting rooms, small offices and a kitchenette

Available Space Suite 601 - 2,666 SF

Net Rent Contact listing agent

Additional Rent \$30.75 PSF

Available Immediately

Sublease Term Until April 29, 2028

Key Highlights



Minutes to popular inner-city green space



Steps away from streetcar and bus stops



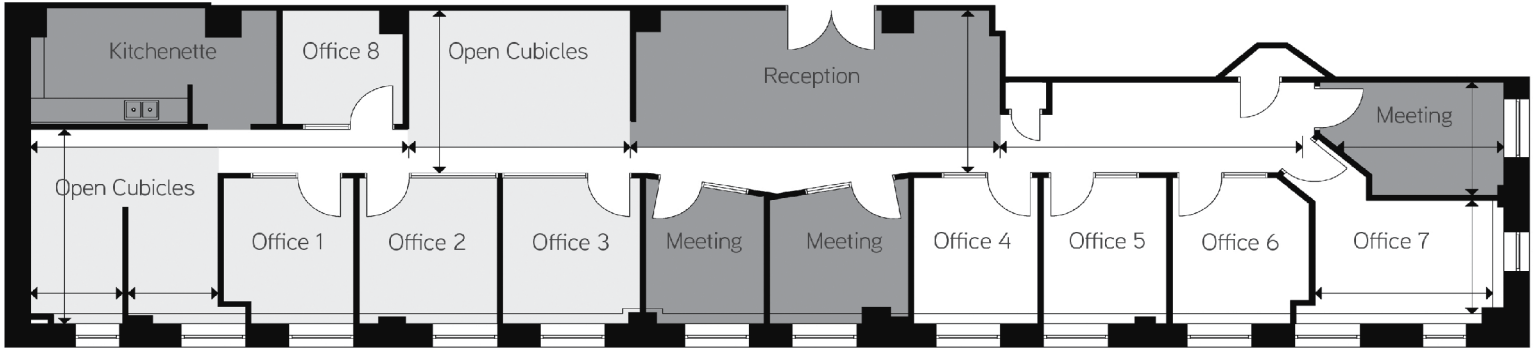
Surrounded by numerous restaurants and bars



Ample natural light



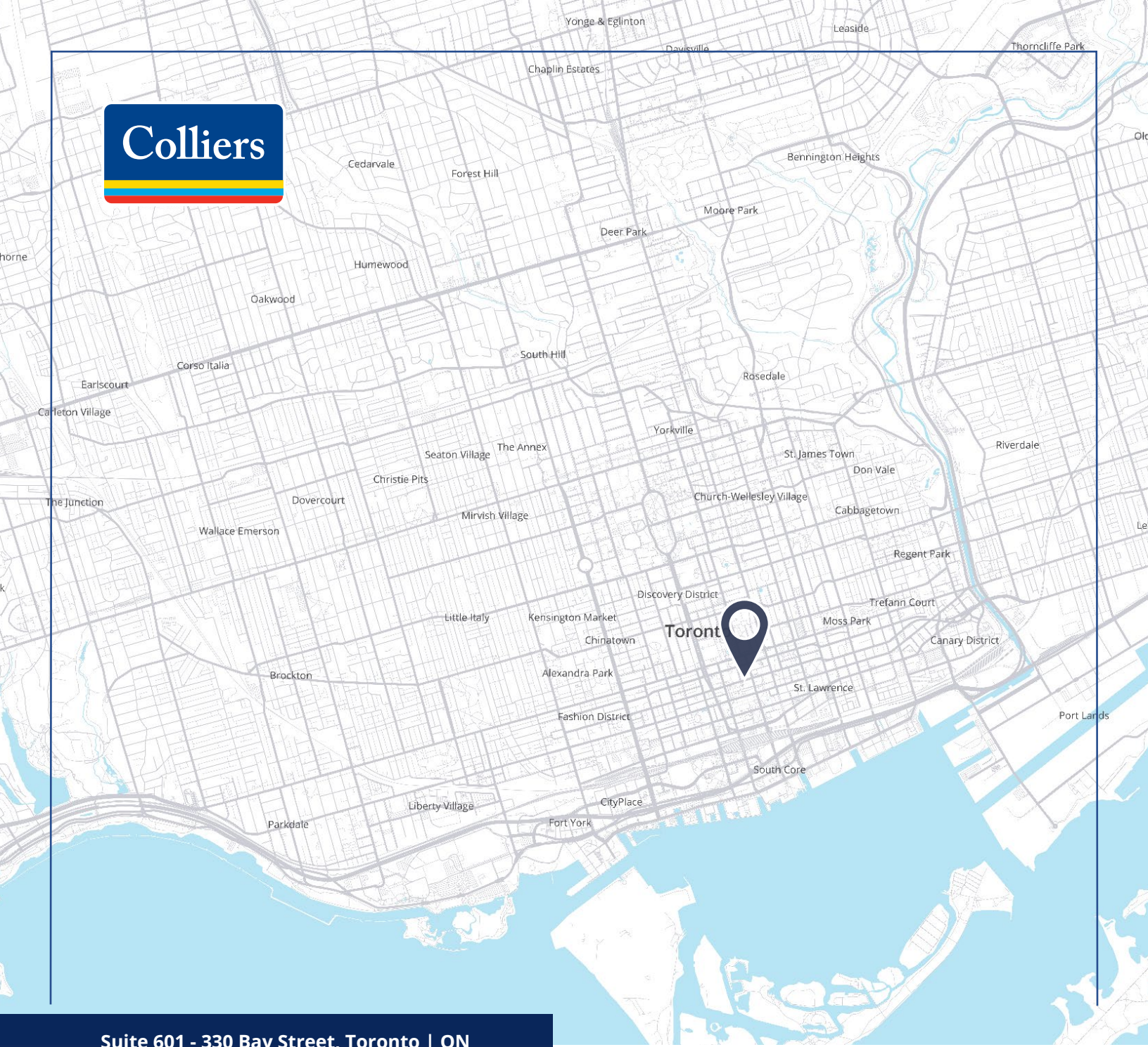
Floor Plan



[View Virtual Tour](#)







Suite 601 - 330 Bay Street, Toronto | ON

Tom Muha*

Vice President
+1 416 620 6104
tom.muha@colliers.com

Charu Mahant

Sales Representative
+1 416 620 2338
charu.mahant@colliers.com

This document has been prepared by Colliers International for advertising and general information only. Colliers International makes no guarantees, representations or warranties of any kind, expressed or implied, regarding the information including, but not limited to, warranties of content, accuracy and reliability. Any interested party should undertake their own inquiries as to the accuracy of the information. Colliers International excludes unequivocally all inferred or implied terms, conditions and warranties arising out of this document and excludes all liability for loss and damages arising there from. This publication is the copyrighted property of Colliers international and/or its licensor(s). Copyright © 2025 Colliers Macaulay Nicolls Inc. *Sales Representative