

6800 Owensmouth Avenue | Warner Center, CA

# PRIME WARNER CENTER

OFFICE SPACE  
FOR LEASE



**Jay Rubin**  
Principal  
818.223.4385  
jrubin@lee-re.com  
DRE# 01320005

**Eugene Kim**  
Principal  
818.444.4919  
ekim@lee-re.com  
DRE# 01521416

**LEE & ASSOCIATES**  
COMMERCIAL REAL ESTATE SERVICES

All information furnished regarding the property is from sources deemed reliable, but no warranty or representation is made as to the accuracy thereof. This information is submitted subject to errors, omissions, change of price or terms, prior sale or lease, or withdrawal without notice. No liability of any kind is to be imposed on the broker herein.

# PRIME WARNER CENTER OFFICE SPACE FOR LEASE

6800 Owensmouth Avenue | Warner Center, CA

## LEASING TERMS

- Asking Rate: \$2.00 FSG
- Lease Term: 3-7 Years
- Parking: \$55/Car (3/1,000 RSF) | Free Visitor

## PROPERTY HIGHLIGHTS

- Steps To Westfield Topanga's Premier Retail & Dining
- Move-In Ready Suites Available
- On-Site Cafe - Ring Cafe
- Free Visitor Parking And Covered Tenant Parking
- Private Balconies On Select Suites
- Shared Conference Room

## AVAILABLE SPACES

SUITE	SIZE
200	2,587 RSF
300*	3,000 RSF
310*	1,940 RSF
315*	3,209 RSF
370	5,603 RSF
425	525 RSF
440	755 RSF

\*Suite 300, 310, 315 Contiguous for 8,149 RSF



**Jay Rubin**  
Principal  
818.223.4385  
jrubin@lee-re.com  
DRE# 01320005

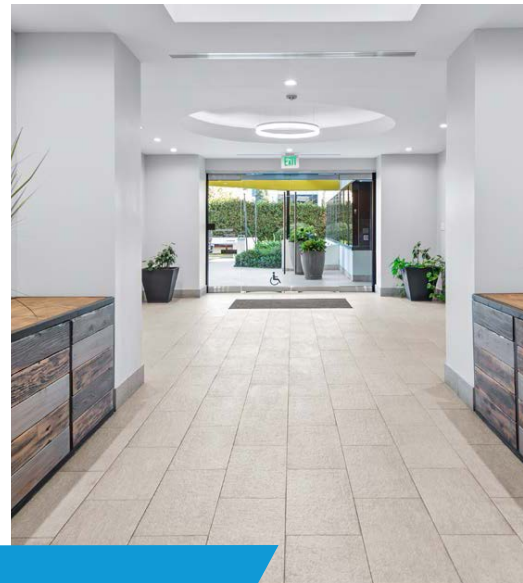
**Eugene Kim**  
Principal  
818.444.4919  
ekim@lee-re.com  
DRE# 01521416

**LEE & ASSOCIATES**  
COMMERCIAL REAL ESTATE SERVICES

All information furnished regarding the property is from sources deemed reliable, but no warranty or representation is made as to the accuracy thereof. This information is submitted subject to errors, omissions, change of price or terms, prior sale or lease, or withdrawal without notice. No liability of any kind is to be imposed on the broker herein.

# PRIME WARNER CENTER OFFICE SPACE FOR LEASE

6800 Owensmouth Avenue | Warner Center, CA



**Jay Rubin**  
Principal  
818.223.4385  
jrubin@lee-re.com  
DRE# 01320005

**Eugene Kim**  
Principal  
818.444.4919  
ekim@lee-re.com  
DRE# 01521416

**LEE & ASSOCIATES**  
COMMERCIAL REAL ESTATE SERVICES

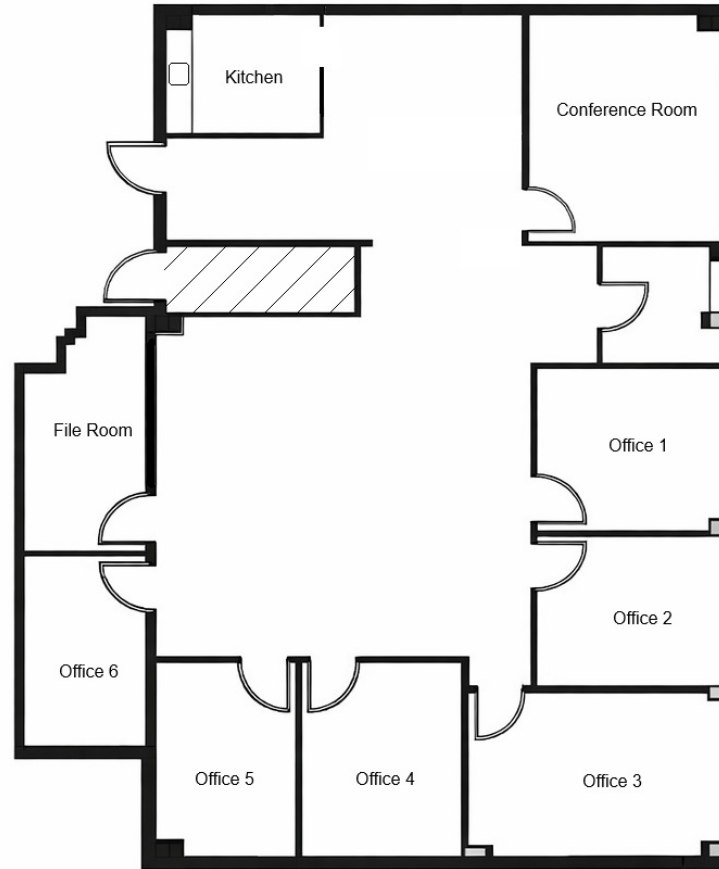
All information furnished regarding the property is from sources deemed reliable, but no warranty or representation is made as to the accuracy thereof. This information is submitted subject to errors, omissions, change of price or terms, prior sale or lease, or withdrawal without notice. No liability of any kind is to be imposed on the broker herein.

# PRIME WARNER CENTER OFFICE SPACE FOR LEASE

6800 Owensmouth Avenue | Warner Center, CA

# 6800

OWENSMOUTH AVE



SUITE  
200

**Jay Rubin**  
Principal  
818.223.4385  
jrubin@lee-re.com  
DRE# 01320005

**Eugene Kim**  
Principal  
818.444.4919  
ekim@lee-re.com  
DRE# 01521416

**LEE & ASSOCIATES**  
COMMERCIAL REAL ESTATE SERVICES

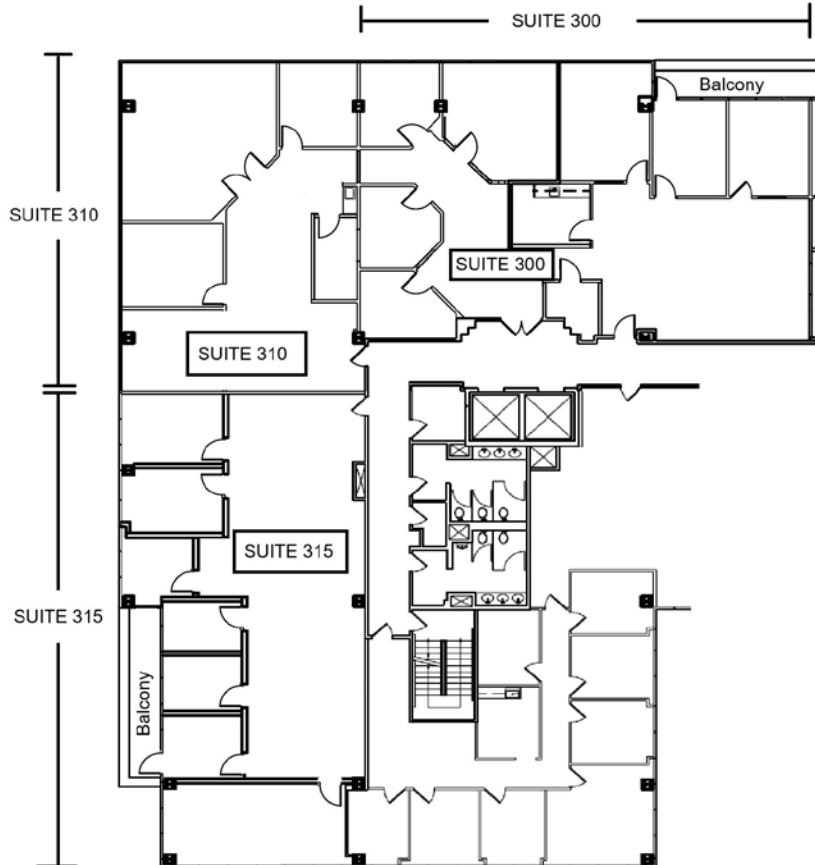
All information furnished regarding the property is from sources deemed reliable, but no warranty or representation is made as to the accuracy thereof. This information is submitted subject to errors, omissions, change of price or terms, prior sale or lease, or withdrawal without notice. No liability of any kind is to be imposed on the broker herein.

# PRIME WARNER CENTER OFFICE SPACE FOR LEASE

6800 Owensmouth Avenue | Warner Center, CA

# 6800

OWENSMOUTH AVE



SUITES  
300  
310  
315

**Jay Rubin**  
Principal  
818.223.4385  
jrubin@lee-re.com  
DRE# 01320005

**Eugene Kim**  
Principal  
818.444.4919  
ekim@lee-re.com  
DRE# 01521416

**LEE & ASSOCIATES**  
COMMERCIAL REAL ESTATE SERVICES

All information furnished regarding the property is from sources deemed reliable, but no warranty or representation is made as to the accuracy thereof. This information is submitted subject to errors, omissions, change of price or terms, prior sale or lease, or withdrawal without notice. No liability of any kind is to be imposed on the broker herein.

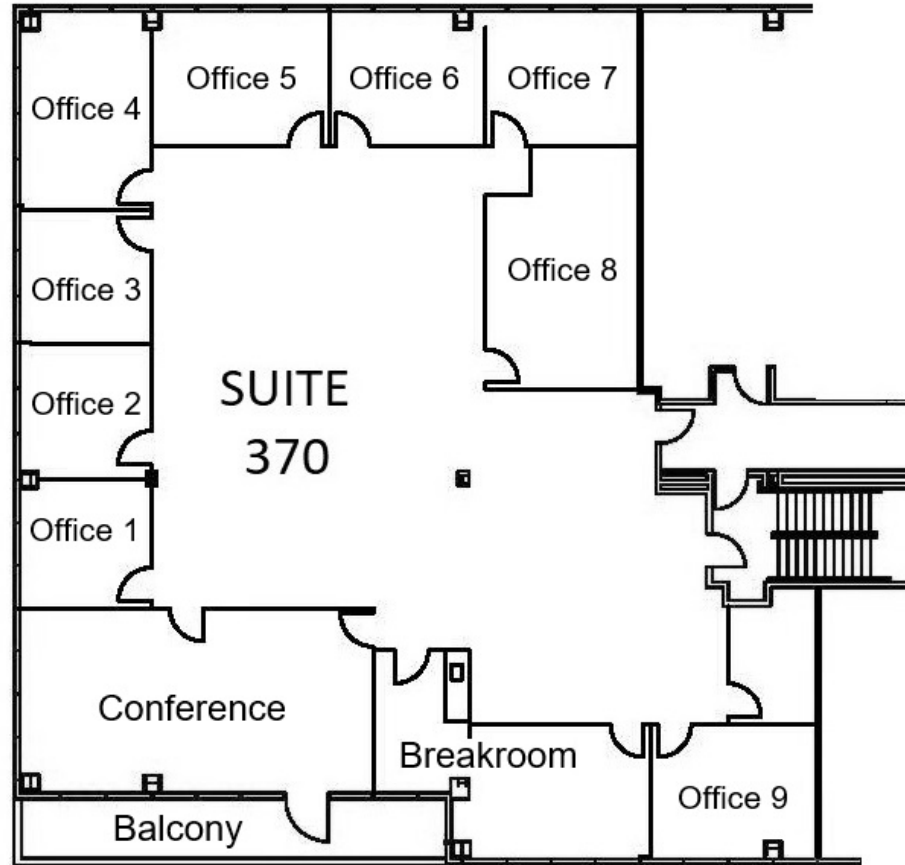
# PRIME WARNER CENTER OFFICE SPACE FOR LEASE

6800 Owensmouth Avenue | Warner Center, CA

# 6800

OWENSMOUTH AVE

SUITE  
370



**Jay Rubin**  
Principal  
818.223.4385  
jrubin@lee-re.com  
DRE# 01320005

**Eugene Kim**  
Principal  
818.444.4919  
ekim@lee-re.com  
DRE# 01521416

**LEE & ASSOCIATES**  
COMMERCIAL REAL ESTATE SERVICES

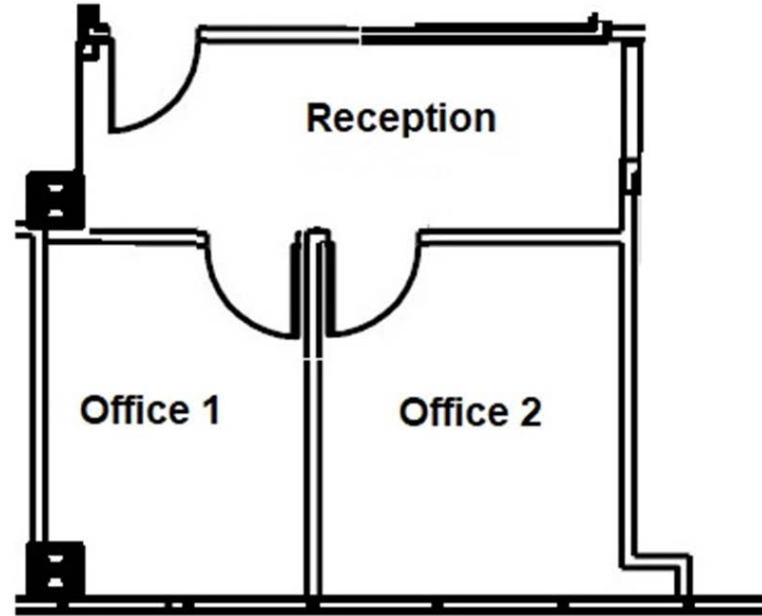
All information furnished regarding the property is from sources deemed reliable, but no warranty or representation is made as to the accuracy thereof. This information is submitted subject to errors, omissions, change of price or terms, prior sale or lease, or withdrawal without notice. No liability of any kind is to be imposed on the broker herein.

# PRIME WARNER CENTER OFFICE SPACE FOR LEASE

6800 Owensmouth Avenue | Warner Center, CA

# 6800

OWENSMOUTH AVE



SUITE  
425

**Jay Rubin**  
Principal  
818.223.4385  
jrubin@lee-re.com  
DRE# 01320005

**Eugene Kim**  
Principal  
818.444.4919  
ekim@lee-re.com  
DRE# 01521416

**LEE & ASSOCIATES**  
COMMERCIAL REAL ESTATE SERVICES

All information furnished regarding the property is from sources deemed reliable, but no warranty or representation is made as to the accuracy thereof. This information is submitted subject to errors, omissions, change of price or terms, prior sale or lease, or withdrawal without notice. No liability of any kind is to be imposed on the broker herein.

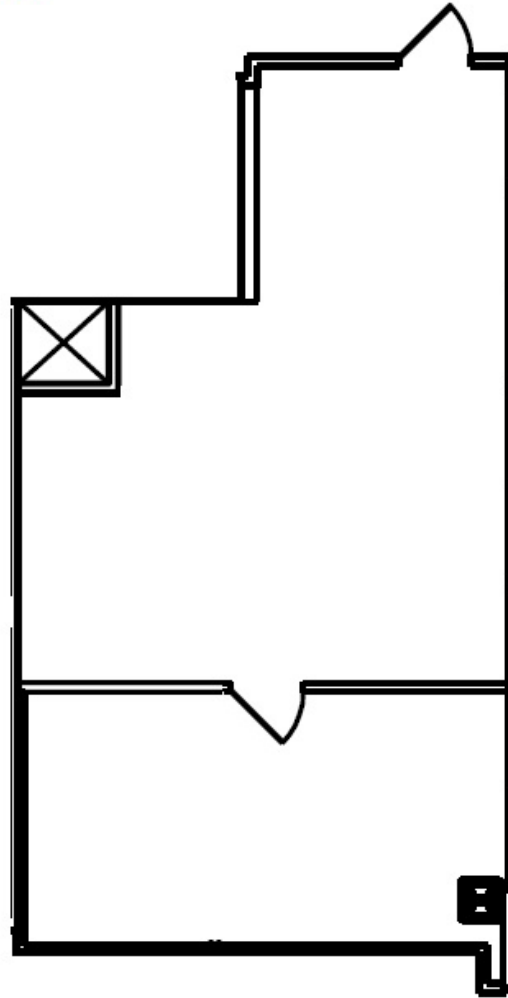
# PRIME WARNER CENTER OFFICE SPACE FOR LEASE

6800 Owensmouth Avenue | Warner Center, CA

# 6800

OWENSMOUTH AVE

SUITE  
440



**Jay Rubin**  
Principal  
818.223.4385  
jrubin@lee-re.com  
DRE# 01320005

**Eugene Kim**  
Principal  
818.444.4919  
ekim@lee-re.com  
DRE# 01521416

**LEE & ASSOCIATES**  
COMMERCIAL REAL ESTATE SERVICES

All information furnished regarding the property is from sources deemed reliable, but no warranty or representation is made as to the accuracy thereof. This information is submitted subject to errors, omissions, change of price or terms, prior sale or lease, or withdrawal without notice. No liability of any kind is to be imposed on the broker herein.

# PRIME WARNER CENTER OFFICE SPACE FOR LEASE

6800 Owensmouth Avenue | Warner Center, CA



- BEST BUY
- bloomingdales
- M
- RACK
- Vitamin
- ROGER DUNN G LFSH PS
- FISH GRILL
- MAIN CHICK
- STARBUCKS
- LA FITNESS
- OFF 5TH
- CHIPOTLE
- Jamba
- Jersey Mike's Subs
- kinecta
- banking done different
- T-Mobile
- SUPERCUTS

- Office DEPOT
- Fleming's
- SHARKY'S
- FOGO DE CHÃO BRAZILIAN STEAKHOUSE
- See's CANDIES
- amazon fresh
- citi
- Krispy Kreme

- COSTCO WHOLESALE
- 24 FITNESS
- Eddie Bauer
- FABLETICS
- REI
- CAVA
- SOBA GUYS
- Burke Williams
- McTarnish
- McDonald's
- LARSEN'S
- verizon
- JOEY RESTAURANTS
- Total Wine & More
- SAINT & SECOND
- STAPLES
- pressed juicery
- WOKCANO
- PAPER SOURCE
- PITFIRE
- J.Jill
- KARAOKE VILLAGE
- EMC
- Sweetfin
- tender greens
- Eureka!
- Crate&Barrel
- Sur la table

- AMC THEATRES
- TARGET
- The Cheesecake Factory
- macy's
- NORDSTROM
- CHIPOTLE
- TILLY'S
- Neiman Marcus
- H&M
- STARBUCKS
- PIZZA EXPRESS
- Bath & Body Works
- URBAN OUTFITTERS
- Apple Store
- california PIZZA KITCHEN

6800 OWENSMOUTH AVE  
CANOGA PARK, CALIFORNIA

Jay Rubin  
Principal  
818.223.4385  
jrubin@lee-re.com  
DRE# 01320005

Eugene Kim  
Principal  
818.444.4919  
ekim@lee-re.com  
DRE# 01521416

**LEE & ASSOCIATES**  
COMMERCIAL REAL ESTATE SERVICES

All information furnished regarding the property is from sources deemed reliable, but no warranty or representation is made as to the accuracy thereof. This information is submitted subject to errors, omissions, change of price or terms, prior sale or lease, or withdrawal without notice. No liability of any kind is to be imposed on the broker herein.