



Bow Chambers, 8 Tib Lane, Manchester, M2 4JB

Serviced office spaces TO LET

- Common Areas
- City/Town Centre
- [///actors.next.flows](#)
- Major Transport Links
- Meeting Rooms

Summary

Available Size	108 to 7,707 sq ft
Rent	£24.33 per sq ft
Business Rates	Upon Enquiry
EPC Rating	C

Description

Choose a different class of workspace for your business with Bow Chambers, perfectly located in Manchester City Centre and central business district.

Work in a members-only venue that reflects your success and is in easy walking distance to local cafes, bars, restaurants and transport links.

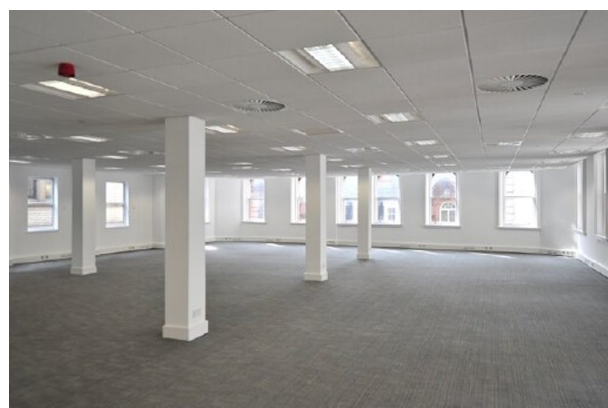
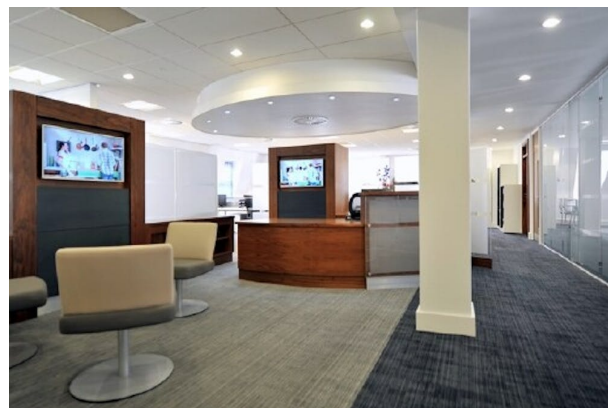
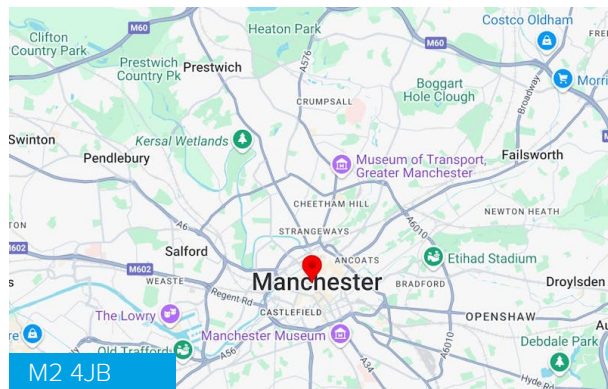
Focus in a beautifully designed building- welcome clients in the professional reception before taking the lift to comfortable coworking spaces. Walk five minutes to Manchester Arndale, a centre that has everything you need to keep yourself entertained.

Location

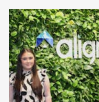
Bow Chambers is located in Manchester City Centre. Transport links are excellent with Cheapside bus stop (Stop CL) which is a 1 minute walk away from the site. Access to St Peters Square tram stop is 0.3-miles away, providing access in and around the city with bars and restaurants within walking distance.

The A6 can be accessed from the South East of the site which connects to the M60. The A57 can be accessed from the South of the site, providing access to the M1 North and South, offering wider linkages to large cities such as Leeds, Edinburgh and London.

Manchester Airport is 9.9 miles South of the site.



Viewing & Further Information



Caitlin Parker

01609 797 330

caitlin.parker@alignpropertypartners.co.uk

View Properties Here
www.alignpropertypartners.co.uk

