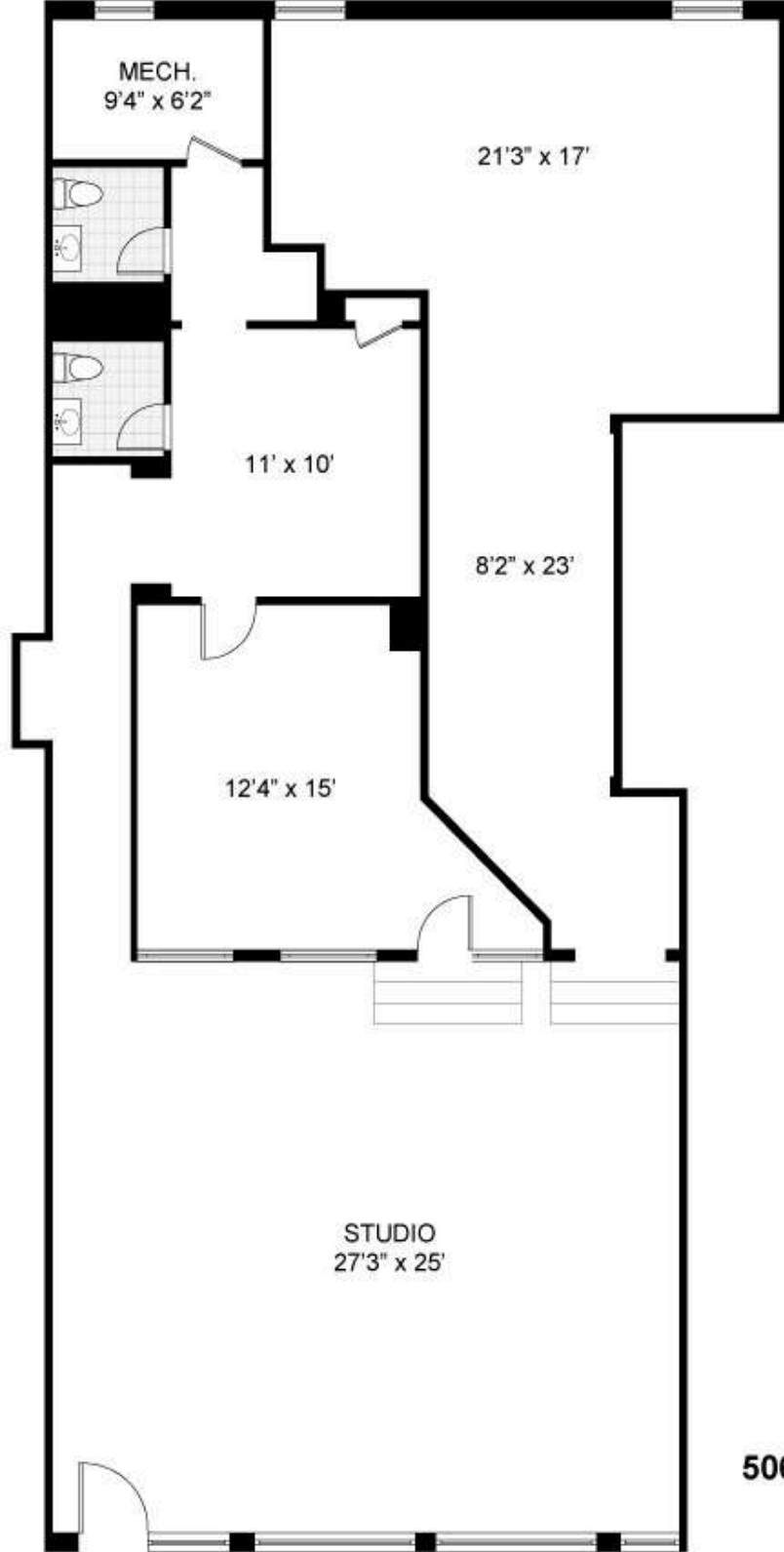


# COMPASS



506 Greenwich Street  
Ground Floor Commercial Condo For Sale





MECH.  
9'4" x 6'2"

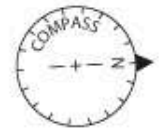
21'3" x 17'

11' x 10'

8'2" x 23'

12'4" x 15'

STUDIO  
27'3" x 25'



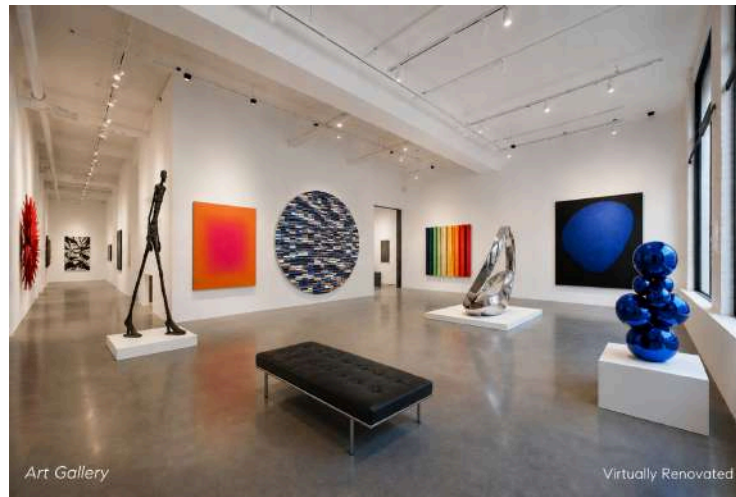
**506 GREENWICH STREET**

## Key Details

Hudson Sq/West Soho Commercial Condo for Sale! This space has been an artist studio for the past 20 years. The 2 stores directly to the south have been turned into a stunning high end retail clothing store and an Art Gallery.

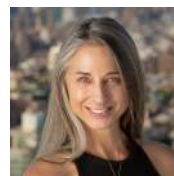
- Approximately 2042 sf
- 14 foot ceilings
- 25 feet of Glass Frontage
- 2 bathrooms
- Multiple commercial uses
- Asking \$2.195M
- Taxes-\$2862 per month
- Common-\$1310 per month
- Residential conversion ok
- **3% to buyers broker**

## Options For The Future



### David Graff

Executive Vice President  
917.664.1452  
david.graff@compass.com



### Danielle Sevier

Founder of The Sevier Team Lic.  
Assoc. R.E. Broker 917.991.5386  
dsevier@compass.com

