



PARKSIDE TOWERS

1001-1051 E. HILLSDALE BOULEVARD, FOSTER CITY

400,000 SF CLASS A OFFICE CAMPUS
in the Heart of **Foster City**

NEWMARK

JOSH ROWELL

Executive Vice President
650.358.5261
josh.rowell@nrmk.com
CA RE License #01236434

MARK COURSON

Managing Director
650.358.5800
mark.courson@nrmk.com
CA RE License #01704280



Parkside Towers is a Class A, 400,000 SF campus with modern on-site amenities and flexible workspaces. Strategically located in Foster City with convenient access, prominent signage visibility and stunning views, the campus offers the ideal environment for businesses to thrive, balancing workstyle and lifestyle.



AVAILABILITY SUMMARY

1001 E Hillsdale Blvd	Suite 550	±7,772 SF	Plug & Play
1051 E Hillsdale Blvd	5th Floor	43,030 SF	
	Suite 710	±19,642 SF	



ELEVATE YOUR WORKDAY



New Outdoor Lounge and Communal Workspace



New state-of-the-art Fitness Facility with Showers and Lockers



On-site Training Conference Center



EV Charging Stations



Bicycle Storage



Private Shuttle with Direct Service to Caltrain



Secured Parking Garage



PROMINENT LOCATION AND VISIBILITY



Signage and Branding opportunities, visible from Highway 92 and 101



Visibility of Parkside's two 8-story Office Towers from HWY 92



Located Directly Across the Street from the Foster City Civic Center



Unobstructed Views of San Francisco Bay, the San Mateo Hills and Foster City's Central Lake



Excellent access to HWY 101 and the San Mateo Bridge

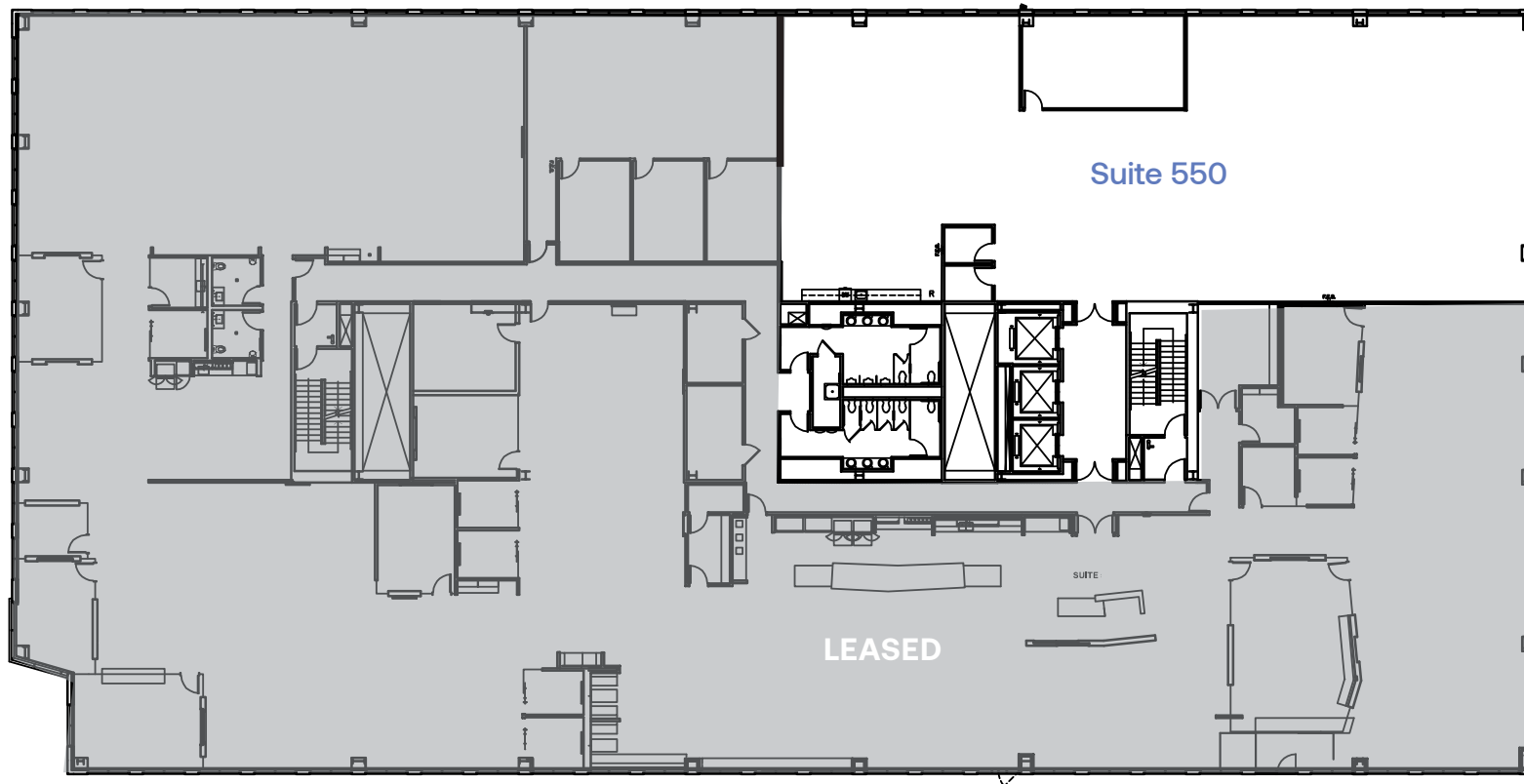
SAN MATEO BRIDGE



LAKE VIEW



1001 E. HILLSDALE BOULEVARD
FIFTH FLOOR SUITE 550 | ±7,772 SF

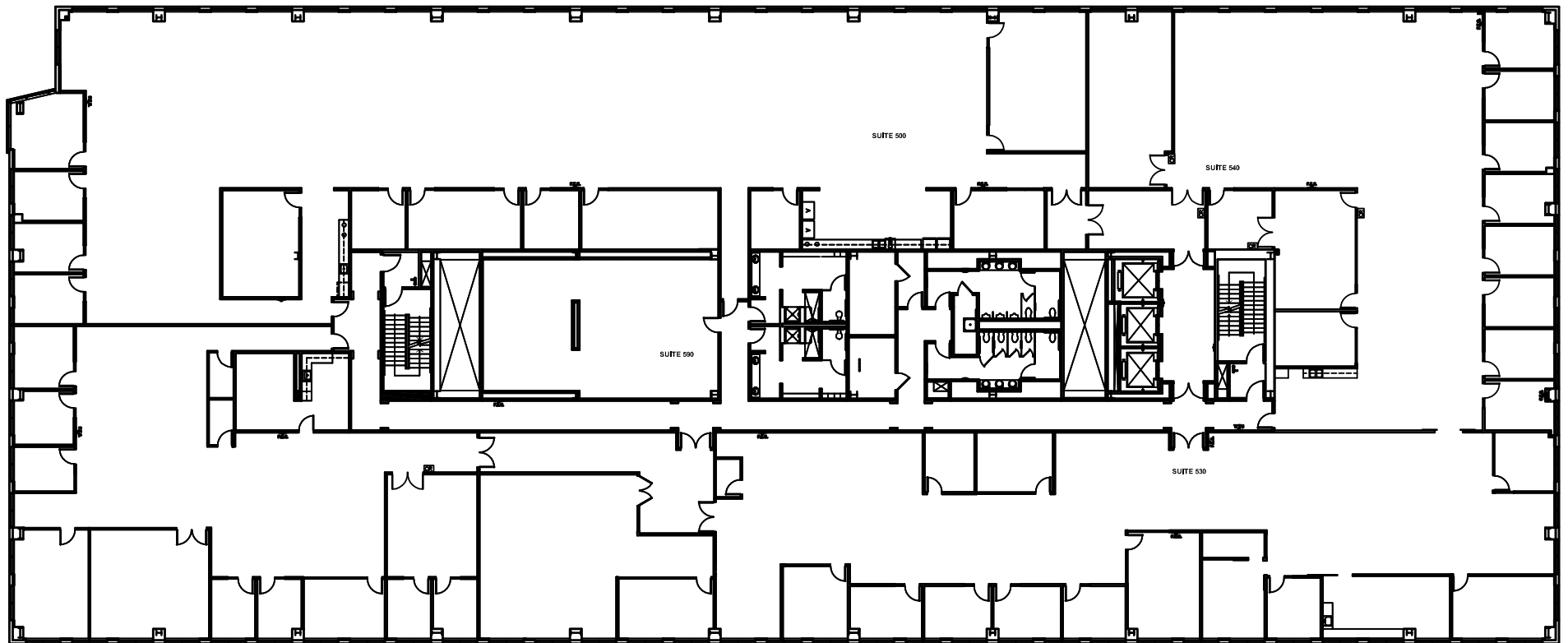


- Available Now
- **PLUG & PLAY**
- Double Door Entry Off Elevator Lobby

- High-End Kitchen
- Exposed Ceiling
- 550W: 78 Work Stations

1051 E. HILLSDALE BOULEVARD FIFTH FLOOR | ±43,030 SF

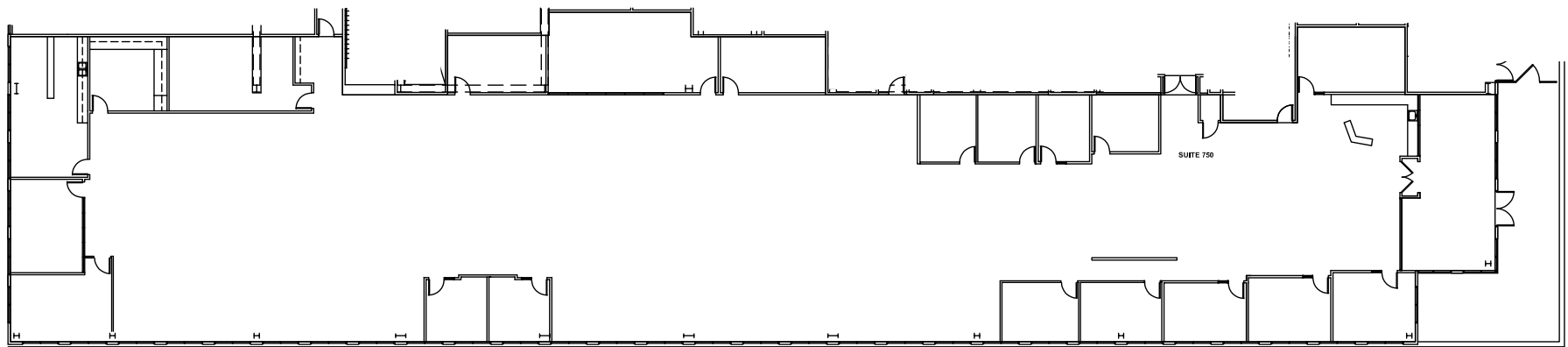
- Available Now







1051 E. HILLSDALE BOULEVARD
SEVENTH FLOOR SUITE 710 | ±19,642 SF

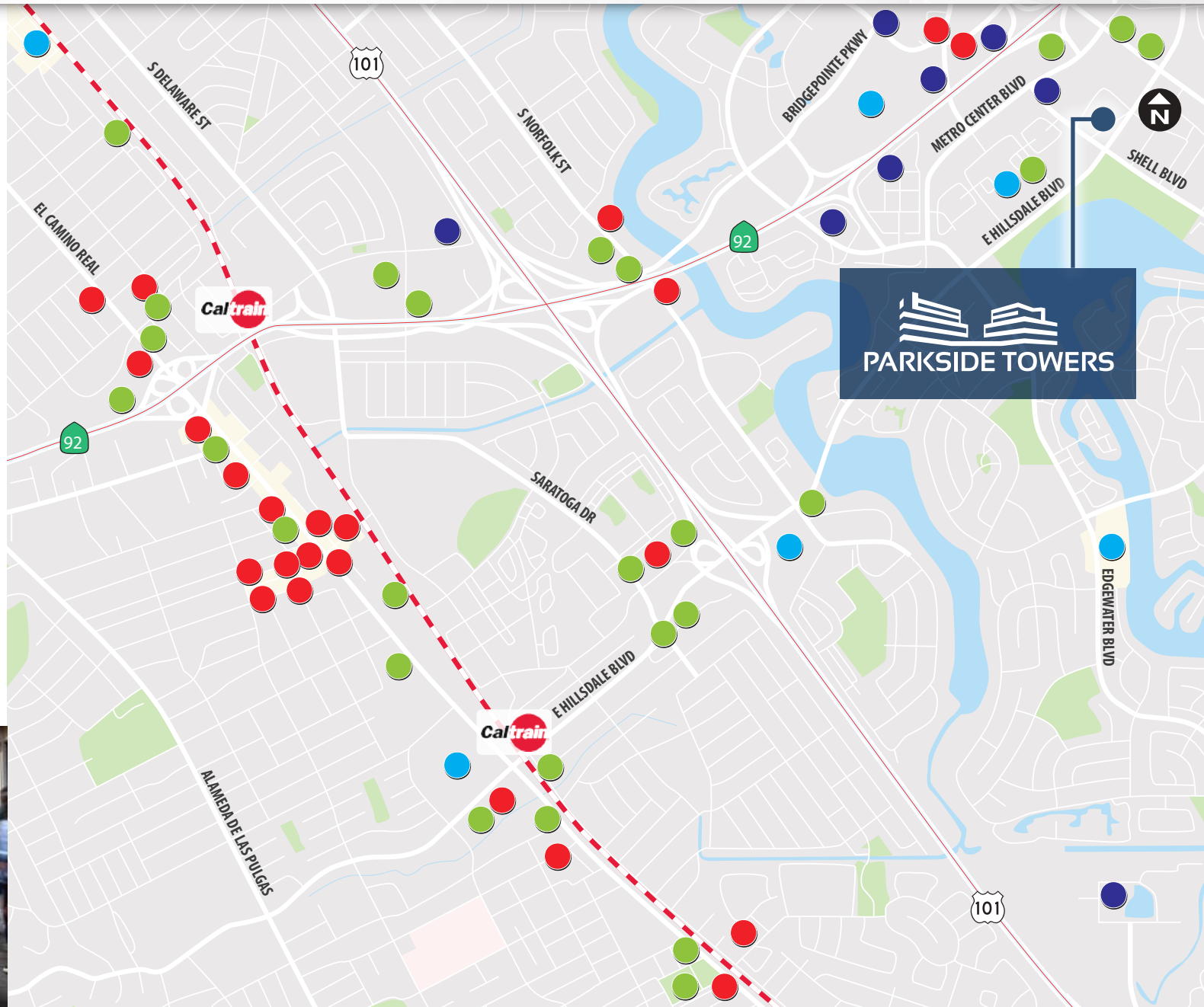


- Available Now
- OPEN FLOOR PLAN



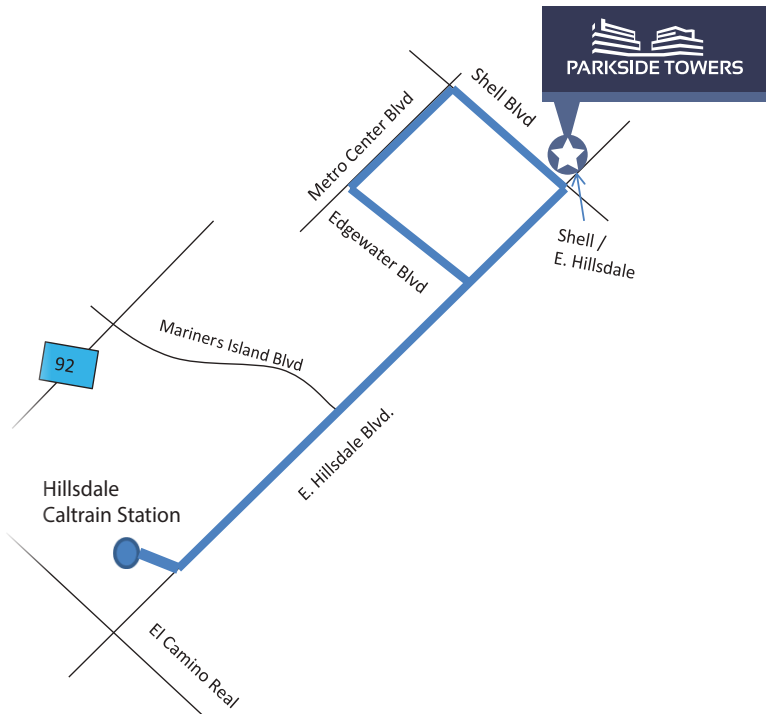
NEARBY AMENITIES

- 40+ Restaurants 
- 30+ Services 
- 6 Shopping Center 
- 8 Hotels 



CONVENIENT ACCESS

DEDICATED ALL DAY SHUTTLE



DRIVE TIME TO MAJOR PLACES

Destination	Distance (Miles)	Drive Time (Mins)
DOWNTOWN SAN MATEO	4.3	9
SAN FRANCISCO	22	24
SFO	8.9	10
PALO ALTO	14	16
OAKLAND	27	28
SJC	26	28



RECENT UPGRADES





PARKSIDE TOWERS

1001-1051 E. HILLSDALE BOULEVARD, FOSTER CITY

JOSH ROWELL

Executive Vice President
650.358.5261
josh.rowell@nrmk.com
CA RE License #01236434

MARK COURSON

Managing Director
650.358.5800
mark.courson@nrmk.com
CA RE License #01704280

parksidetowersfostercity.com

2950 SOUTH DELAWARE STREET, SUITE 125, SAN MATEO, CA 94403

The distributor of this communication is performing acts for which a real estate license is required. The information contained herein has been obtained from sources deemed reliable but has not been verified and no guarantee, warranty or representation, either express or implied, is made with respect to such information. Terms of sale or lease and availability are subject to change or withdrawal without notice. MP-797 • 1/25

NEWMARK



HARVEST
PROPERTIES