

Mission Viejo Commerce Center

27210-27240 La Paz Road
Mission Viejo, CA



PROPERTY DESCRIPTION

Service Retail and Car Care Retail Center with close proximity to I-5 Freeway. Excellent location along La Paz Road across from a Master Planned Community with affluent residential base.

John Bibeau

Lic. 1250130

+1 949 793 5211

john@city-commercial.com

Ryan Mele

Lic. 01322784

+1 909 322 1671

ryan@city-commercial.com

LOCATION & AVAILABILITY

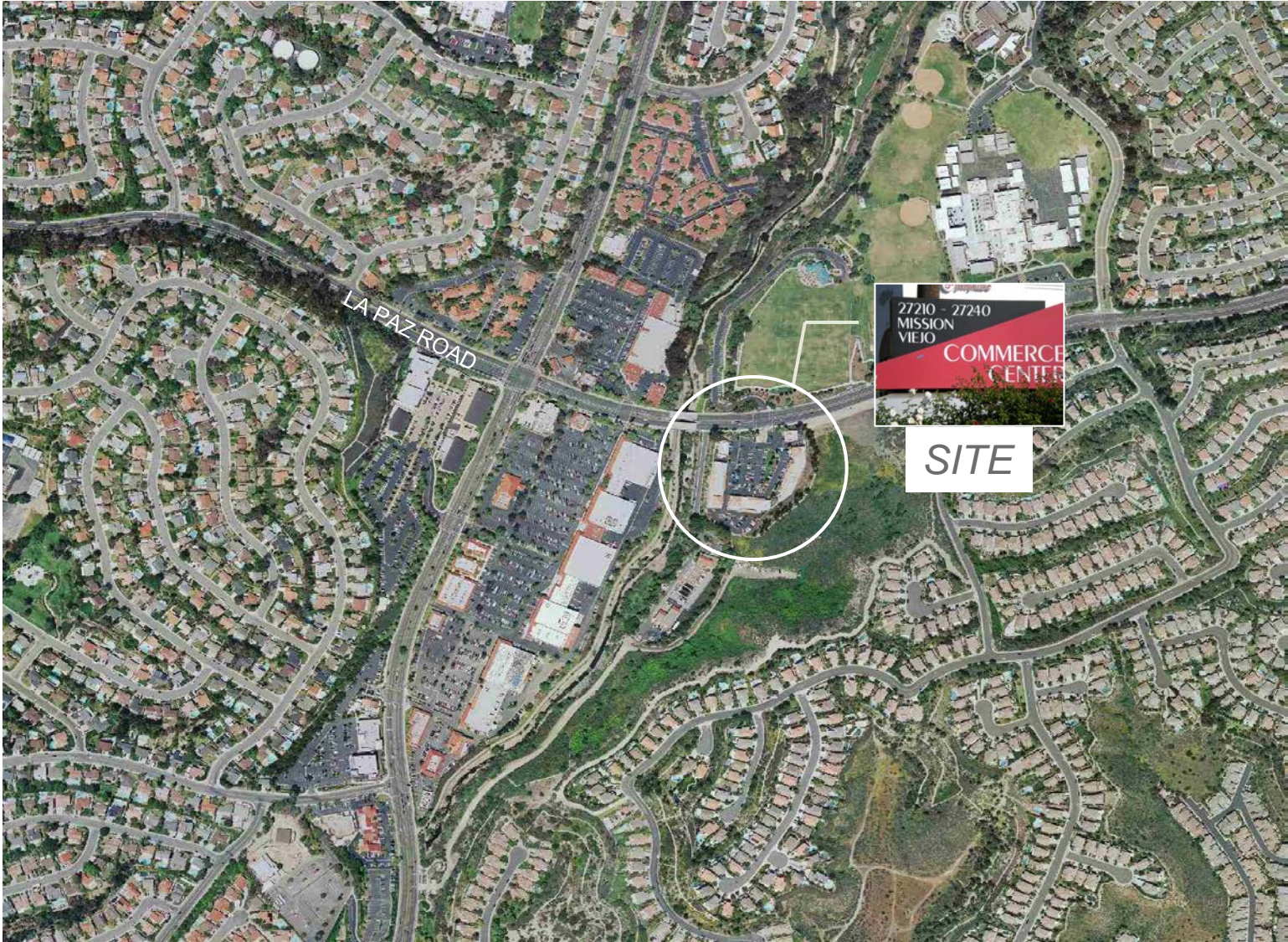
27210-27240 La Paz Road
Mission Viejo, CA 92692

AVAILABLE FOR LEASE:

27230 La Paz Road, Suite F – 1,025 SF



Aerial



John Bibeau
 Lic. 1250130
 +1 949 793 5211
 john@city-commercial.com

Ryan Mele
 Lic. 01322784
 +1 909 322 1671
 ryan@city-commercial.com



The information contained in this document has been obtained from sources believed reliable. While CityCom Real Estate Services does not doubt its accuracy, CityCom Real Estate Services has not verified it and makes no guarantee, warranty or representation about it. It is your responsibility to independently confirm its accuracy and completeness. Any projections, opinions, assumptions or estimates used are for example only and do not represent the current or future performance of the property. The value of this transaction to you depends on tax and other factors which should be evaluated by your tax, financial and legal advisors. You and your advisors should conduct a careful, independent investigation of the property to determine to your satisfaction the suitability of the property for your needs. Photos herein are the property of their respective owners and use of these images without the express written consent of the owner is prohibited.