

# BAYTOWNE SQUARE & SHOPPES



NWC N Prospect Ave & Marketview Dr. / Champaign, IL



# BAYTOWNE SQUARE & SHOPPES

## Address

NWC N Prospect Ave &  
Marketview Dr  
Champaign, IL 61822

## Availability

1,500 - 11,529 SF

## Co-Tenants/ Area Retailers



DOLLAR TREE



## Features

- The center is located in the heart of Champaign, near the University of Illinois and I-74 with nearly 50,000 vehicles passing daily.
- The center serves a dense trade area with over 135,000 residents within a 5-mile radius and a daytime population of 161,000+ people.
- Last year, the center attracted 1.7 million visits according to Placer.ai.
- Notable Tenants:

**Petsmart:** Ranked 5th most visited in Illinois, in the 99th percentile of pet stores.

**Ulta:** In the 99th percentile for Beauty & Spa in Illinois.

**Staples:** The 2nd most visited Staples store in Illinois.

**Chili's:** Ranked in the 99th percentile for restaurants in Illinois.

**Buffalo Wild Wings:** In the 87th percentile for restaurants in Illinois

## Demographics

	3 Miles	5 Mile	10 Miles
POPULATION	79,499	135,654	168,407
HOUSEHOLDS	33,635	57,174	70,377
AVG HOUSEHOLD INCOME	\$65,231	\$82,628	\$92,650
DAYTIME POPULATION	105,412	161,018	185,064

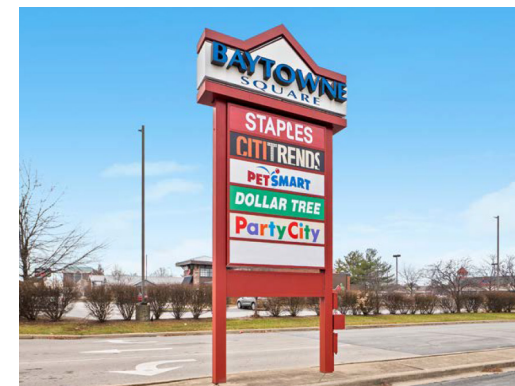


# BAYTOWNE SQUARE & SHOPPES

## Site Plan



Unit	Tenant	SF
SH001	Great Clips	1,200
<b>SH002</b>	<b>AVAILABLE</b>	<b>1,500</b>
SH003	Red Wing Shoes	1,500
SH006	Buffalo Wild Wings	6,020
SH007	Emma's Eatery	1,500
SH008	Burrito King	1,500
SH009	Shangri-la Massage	1,500
SH010	The UPS Store	1,140
<b>SH011</b>	<b>AVAILABLE</b>	<b>2,430</b>
SH012	Bard Optical	2,430
SH014	Art Nails	1,500
SH015	Evergreen Tobacco	1,500
SQ2001	Rally House	9,038
SQ2005	Staples	20,000
SQ2009	Dollar Tree	9,423
SQ2013	Citi Trends	10,806
SQ2017	PetSmart	20,020
<b>SQ2019</b>	<b>LEASE PENDING</b>	<b>11,529</b>
SQ2023	Ulta	10,469
SQB909	Baytowne Nails	1,500
SQB911	Milan Laser	1,800
<b>Total GLA</b>		<b>118,305</b>



# CHAMPAIGN, IL

## Site Aerial



# CHAMPAIGN, IL

## Aerial



# BAYTOWNE SQUARE & SHOPPES

**PAIGE WINKELS**

630.954.7221

[PWinkels@MidAmericaGrp.com](mailto:PWinkels@MidAmericaGrp.com)



**MID-AMERICA<sup>®</sup>**  
Asset Management, Inc.

One Parkview Plaza, 9th Floor  
Oakbrook Terrace, Illinois 60181  
630.954.7300

[MidAmericaGrp.com](http://MidAmericaGrp.com)