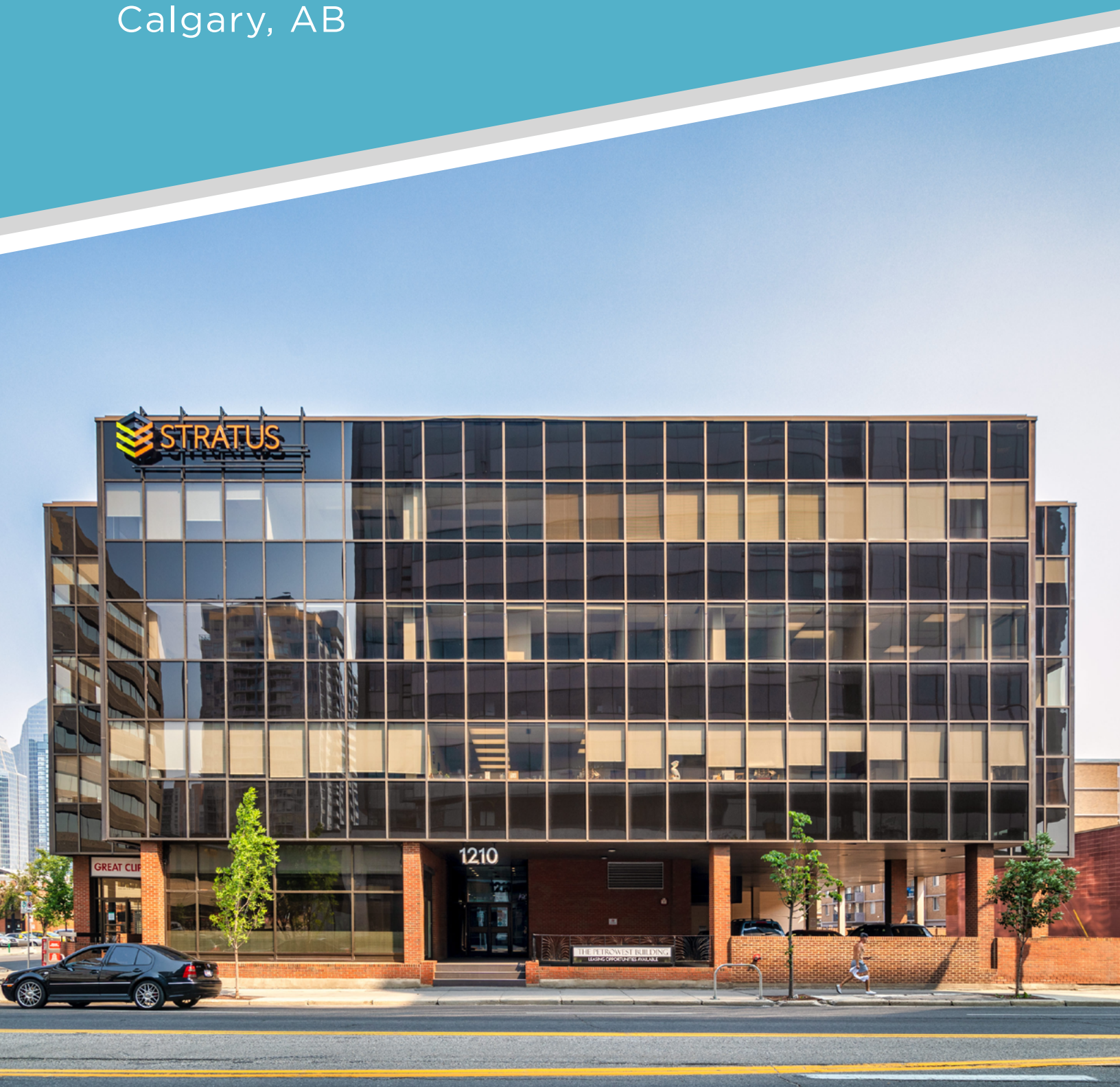




OFFICE SPACE FOR LEASE

1210 8TH STREET SW

Calgary, AB



BUILDING OVERVIEW

1210 8 Street SW stands on the corner of one of the Beltline's most prominent addresses and is surrounded by some of the Beltline's best amenities. The Beltline's 8th Street Corridor is undergoing a development renaissance and is now home to GoodLife Fitness, Urban Fare, Canadian Tire and a future large mixed-use development just to the south of the building.

OFFICE DETAILS

Suite 210	929 sf	LEASED
Suite 220	3,775 sf	
Suite 400	4,241 sf	LEASED
Suite 405	2,331 sf	SHOW SUITE
Suite 410	4,391 sf	
Lease Rate	Market Lease Rates	
Operating Costs	\$16.30 per sf (est. 2026)	
Occupancy	Immediately	



ABOUT THE LANDLORD

1210 8 Street SW was recently acquired by Steiner Properties Ltd., a large family owned real estate company and developer headquartered in Vancouver, British Columbia. Steiner Properties takes a long-term approach to its commercial and residential real estate with a multi-generational strategy and looks to develop symbiotic and beneficial relationships with its tenants.



PROPERTY DETAILS

- Building Size: 36,939 sq.ft
- Parking Ratio: 1 stall per 586 sq.ft
- Surface Parking Rates: \$225 per stall, per month
- Underground Parking Rates: \$250 per stall, per month
- Visitor Parking: Surface, paid hourly

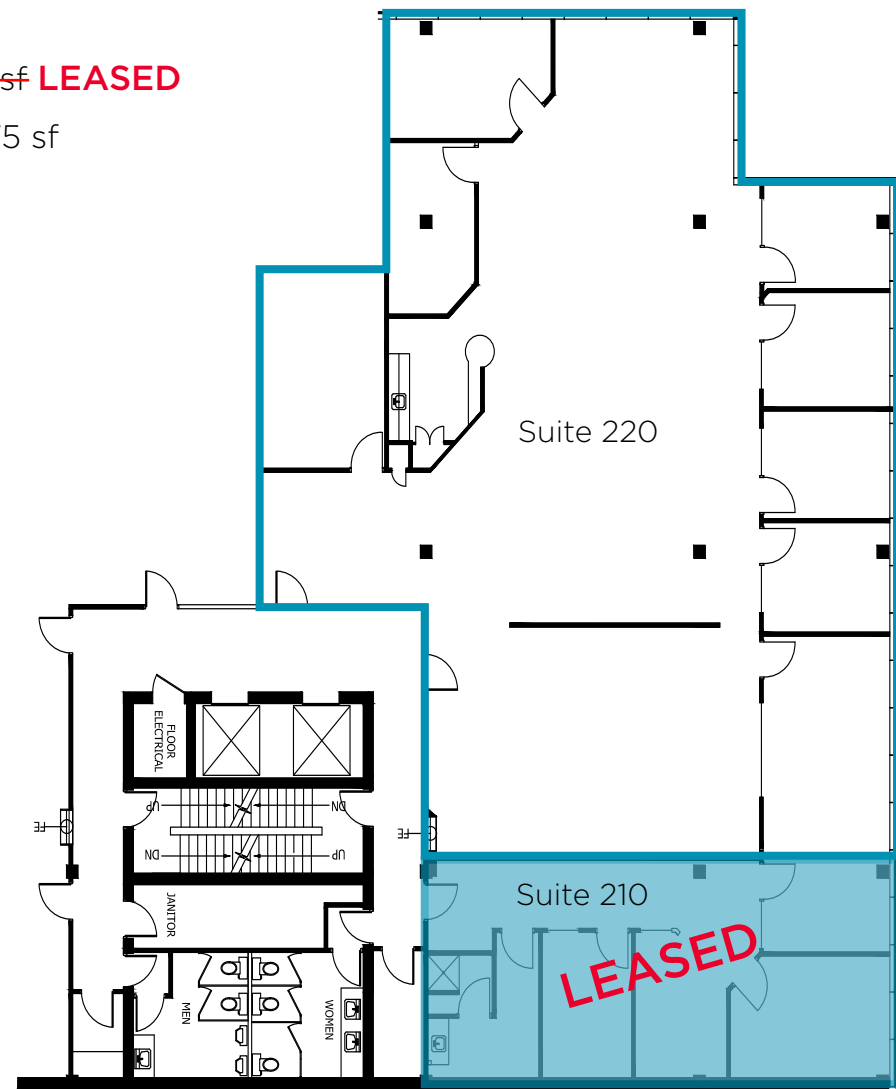


WELCOME TO THE BELTLINE

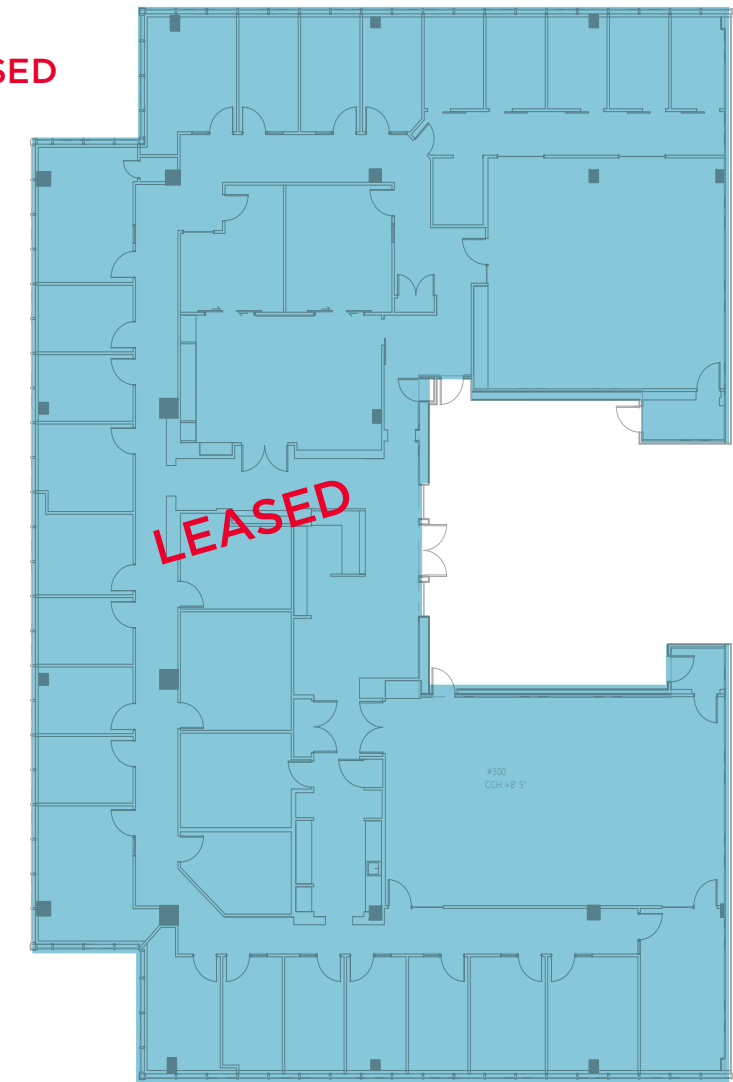
FLOOR PLANS

~~Suite 210 - 929 sf~~ **LEASED**

Suite 220 - 3,775 sf



~~Suite 300 - 11,037 sf~~ **LEASED**

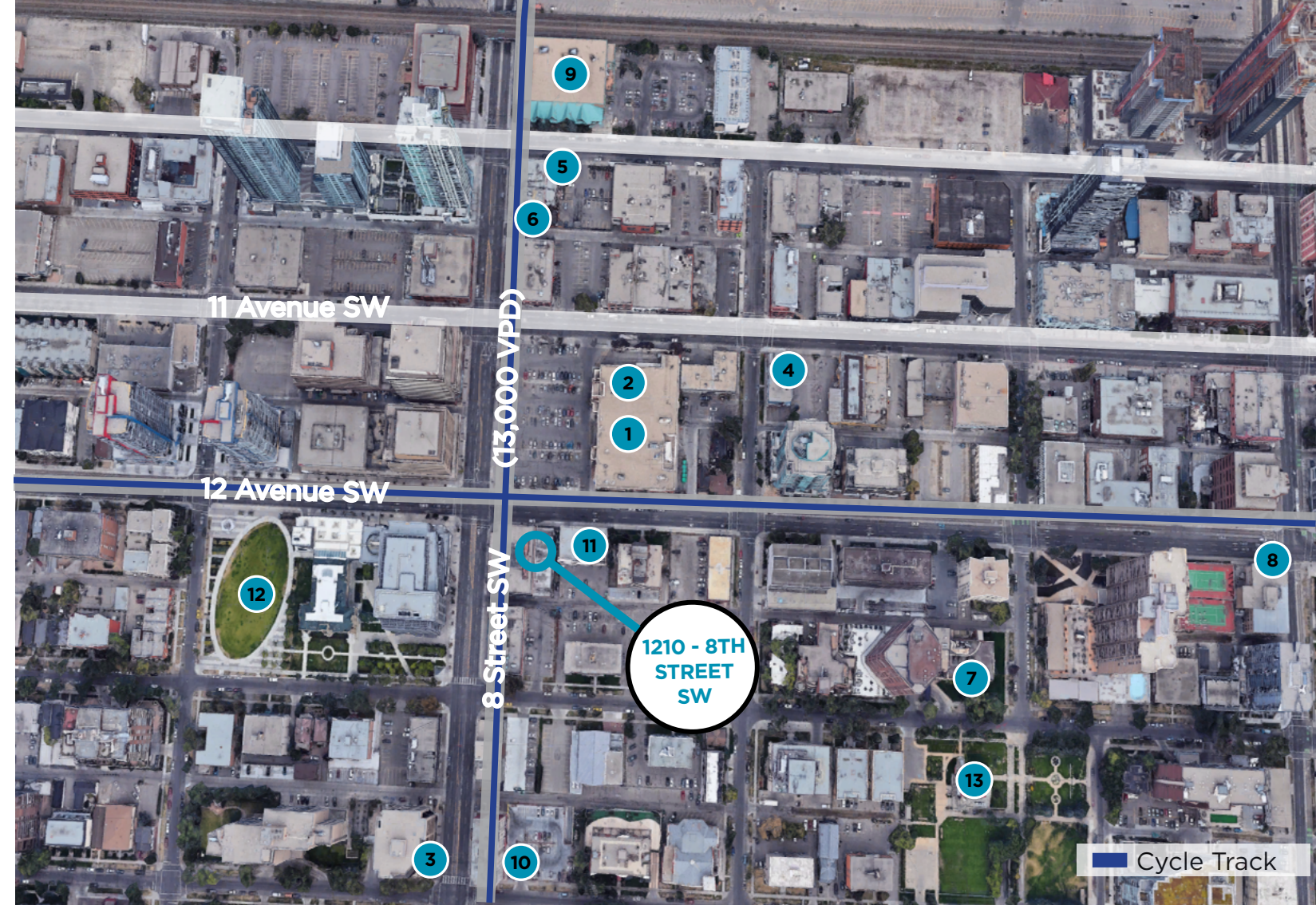
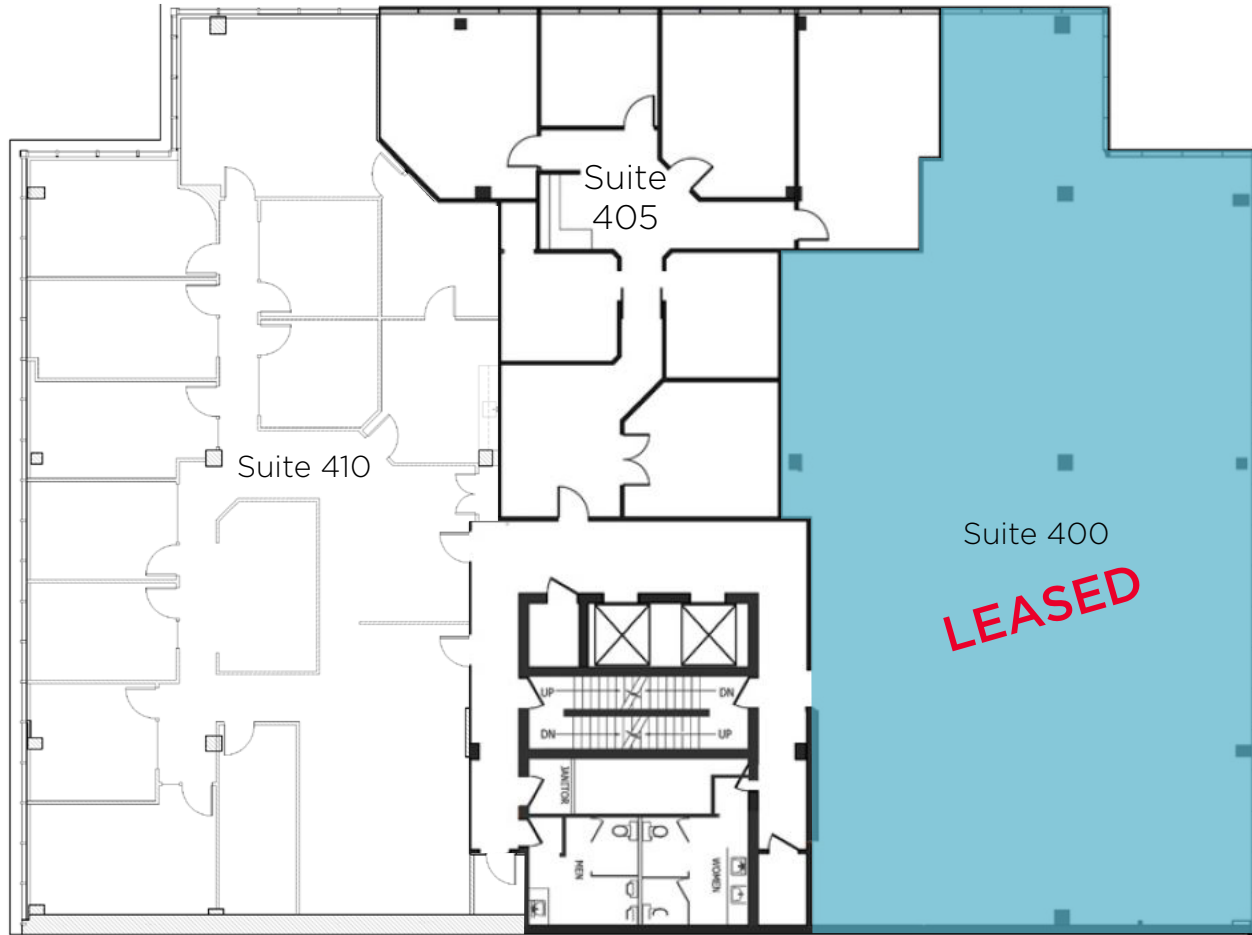


FLOOR PLANS

Suite 400 - 4,241 sf **LEASED**

Suite 405 - 2,331 sf
[Show Suite](#)

Suite 410 - 4,391 sf



- | | | |
|---------------------|------------------------|---|
| 1 Safeway | 6 Bonterra Trattoria | 10 Best Western Plus |
| 2 Starbucks | 7 The Ranchmen's Club | 11 Nuvo Hotel Suites |
| 3 Kawa Espresso Bar | 8 Husdons Canada's Pub | 12 Barb Scott Park |
| 4 saVeg Cafe | 9 MEC | 13 Lougheed House National & Provincial Historic Site |
| 5 Holy Grill | | |



DEMOGRAPHICS

POPULATION
108,011

MEDIAN AGE
36

WITHIN 3 KM RADIUS
Source: Piiipoint



DAYTIME POPULATION
291,611



TOTAL HOUSEHOLDS
58,693



AVG. HOUSEHOLD INCOME
\$146,528



WALK SCORE
98



TRANSIT SCORE
84



BIKE SCORE
90



CONTACT

ADAM RAMSAY

Executive Vice President

Office Sales & Leasing

+1 403 261 1103

adam.ramsay@cushwake.com

TRENT PETERSON

Vice President

Office Sales & Leasing

+1 403 261 1101

trent.peterson@cushwake.com

DAVID LEES

Executive Vice President

Office Sales & Leasing

+1 403 261 1102

david.lees@cushwake.com

Cushman & Wakefield ULC

250 6 Ave SW, Suite 2400

Calgary, AB T2P 3H7

cushmanwakefield.com



©2026 Cushman & Wakefield. All rights reserved. The material in this presentation has been prepared solely for information purposes, and is strictly confidential. Any disclosure, use, copying or circulation of this presentation (or the information contained within it) is strictly prohibited, unless you have obtained Cushman & Wakefield's prior written consent. The views expressed in this presentation are the views of the author and do not necessarily reflect the views of Cushman & Wakefield. Neither this presentation nor any part of it shall form the basis of, or be relied upon in connection with any offer, or act as an inducement to enter into any contract or commitment whatsoever. NO REPRESENTATION OR WARRANTY IS GIVEN, EXPRESS OR IMPLIED, AS TO THE ACCURACY OF THE INFORMATION CONTAINED WITHIN THIS PRESENTATION, AND CUSHMAN & WAKEFIELD IS UNDER NO OBLIGATION TO SUBSEQUENTLY CORRECT IT IN THE EVENT OF ERRORS.