

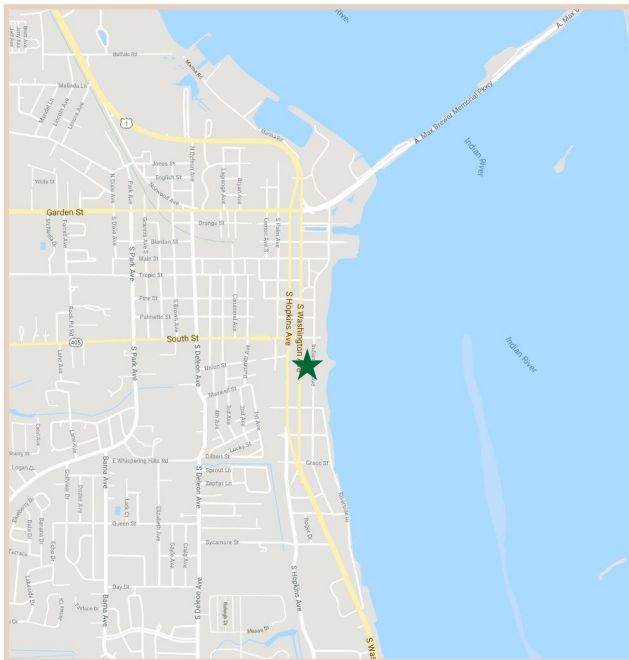
# FOR LEASE

City Square Professional Center

815 S Washington Avenue, Titusville, FL, 32780

## PROPERTY FACTS

Building Area:	18,822 Sq. Ft.
No. of Units:	8 Units
Parcel Size:	1.15 Acres
Year Built:	1989
Construction:	Concrete Block with Stucco
Zoning:	CBD
Parking:	60 Spaces
Building Height:	Two Stories
Use:	Class A Office Building
Special Features:	Elevator



## PROPERTY HIGHLIGHTS

Price	These units are competitively priced, providing an excellent value for the area.
Location	Near Titusville City Hall, Brevard County Courthouse, and Downtown Titusville. There are lots of restaurants and retail stores near by.
Capital Expenditures	Freshly renovated units ready to be moved into. Excellent exposure to the public with the signage provided by the Landlords.
Parking & Access	Two entrances to the parking lot with 60 parking spaces to choose from.



**CHARLES A. VON STEIN, INC.**  
Commercial Property Management,  
Sales & Leasing Specialists since 1963  
626 Old Dixie Highway SW  
Vero Beach, FL 32962  
www.vscrc.com

### CONTACT INFO:

Brevard County: 321.725.1961  
Indian River County: 772.778.4885  
Fax: 772.778.4908  
Leasing: leasing@vscre.com



# AVAILABLE UNITS

First Floor

City Square Professional Center

815 S Washington Avenue, Titusville, FL, 32780

UNIT	SIZE	RATE	MONTHLY RATE	UTILITIES INCLUDED				Details
				Water	Electric	Trash	Cable	
103	1,911 SF	\$15.00	SF/ YR \$2,388.75	YES	YES	YES	NO	Recently Renovated Office Space



## CHARLES A. VON STEIN, INC.

Commercial Property Management,

Sales & Leasing Specialists since 1963

626 Old Dixie Highway SW

### CONTACT INFO:

Brevard County: 321.725.1961

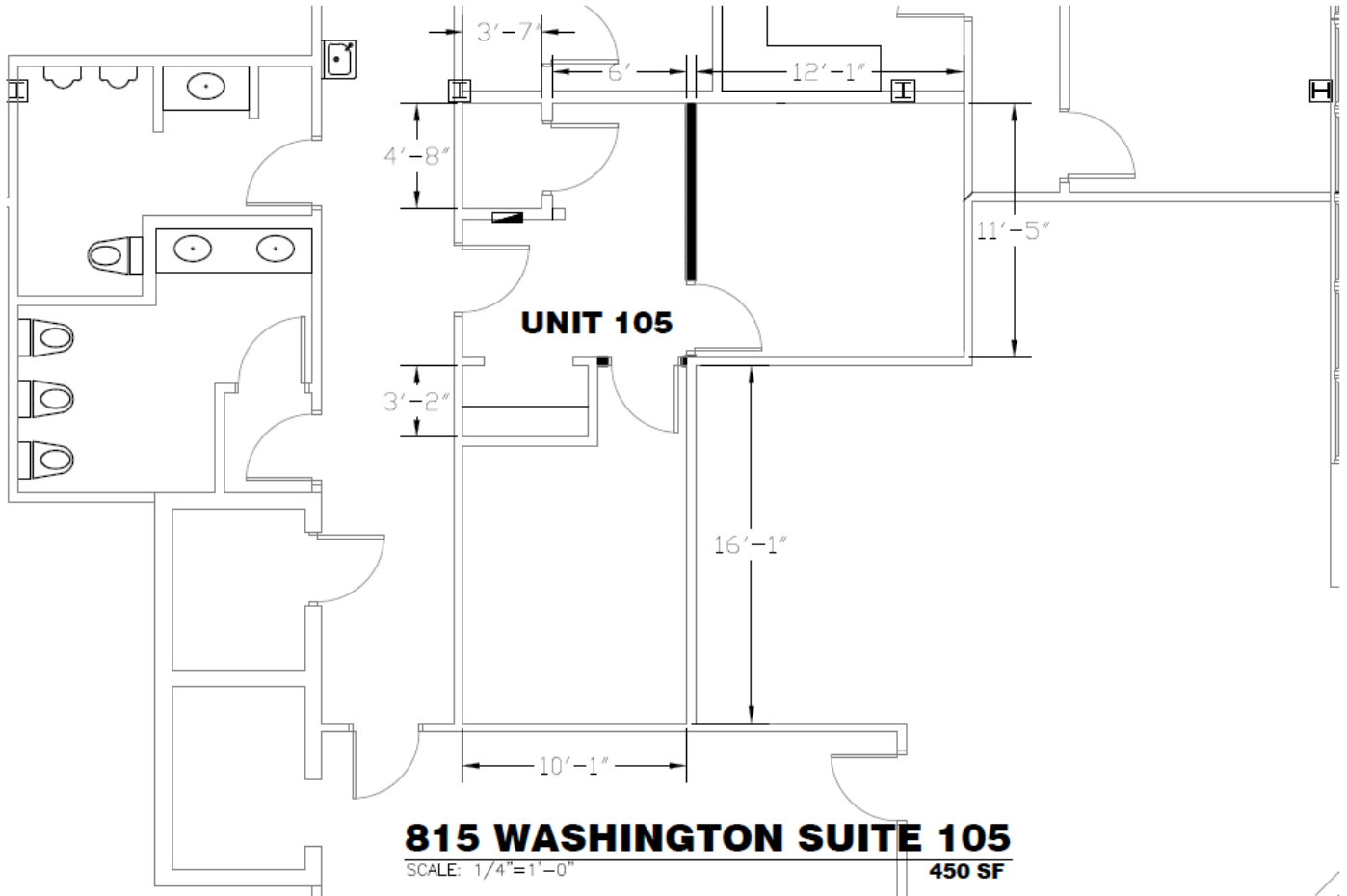
Indian River County: 772.778.4885

# FLOOR PLAN

Unit 105

City Square Professional Center

815 S Washington Avenue, Titusville, FL, 32780



450 SF



**CHARLES A. VON STEIN, INC.**

*Commercial Property Management,*

*Sales & Leasing Specialists since 1963*

626 Old Dixie Highway SW

**CONTACT INFO:**

Brevard County: 321.725.1961

Indian River County: 772.778.4885



# AVAILABLE UNITS

Second Floor

City Square Professional Center

815 S Washington Avenue, Titusville, FL, 32780

UNIT	SIZE	RATE	MONTHLY RATE	UTILITIES INCLUDED				Details
				Water	Electric	Trash	Cable	
202	2,683 SF	\$15.00	SF/ YR \$3,353.75	YES	YES	YES	NO	Recently Renovated Office Space



## CHARLES A. VON STEIN, INC.

Commercial Property Management,

Sales & Leasing Specialists since 1963

626 Old Dixie Highway SW

### CONTACT INFO:

Brevard County: 321.725.1961

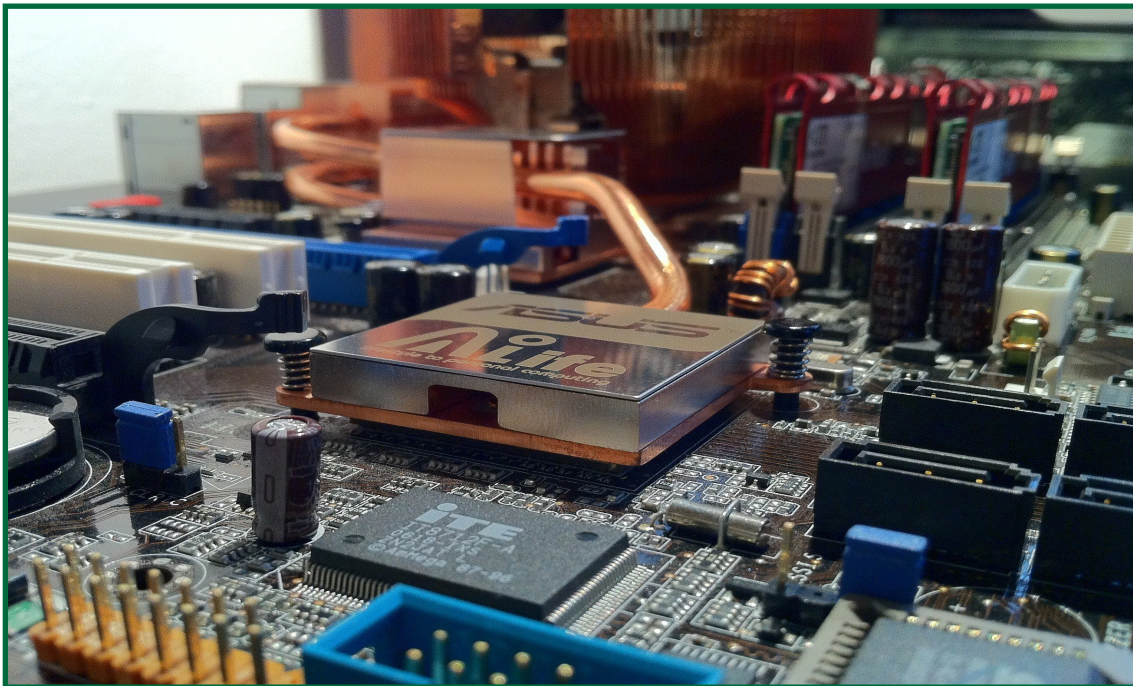
Indian River County: 772.778.4885

## *Economy of Titusville*



Titusville commands a diversified and developed local economy. This is demonstrated by Titusville's encompassing range of industries and occupations available to the local population. Investors and tenants alike will benefit from occupying space in this flourishing

environment. The economy of Titusville itself is anchored by a diverse cluster of significant employers, insulating the region from instability.



### **CHARLES A. VON STEIN, INC.**

*Commercial Property Management,  
Sales & Leasing Specialists since 1963*  
626 Old Dixie Highway SW  
Vero Beach, FL 32962  
[www.vscrc.com](http://www.vscrc.com)

### **CONTACT INFO:**

Brevard County: 321.725.1961  
Indian River County: 772.778.4885  
Fax: 772.778.4908  
Leasing: [leasing@vscrc.com](mailto:leasing@vscrc.com)

# EMPLOYMENT IN TITUSVILLE

City Square Professional Center

815 S Washington Avenue, Titusville, FL, 32780

## Major Employers in Titusville

- **Kennedy Space Center (NASA)** - Space exploration and services (Includes federal employees and contract positions)
- **Parrish Medical Center (PMC)** - Health services provider
- **Knight's Armament** - Weapons, firearms, and munitions manufacturer
- **Professional Aircraft Accessories** - Aviation components manufacturer
- **Boeing** - Aerospace (office)
- **Barn Light Electric** - Electrical fixtures manufacturer
- **Ecklers Industries** - Automotive parts and components
- **Blue Origin** - Rocket manufacturer
- **Astro-tech (Lockheed Martin)** - Aerospace components assembly
- **SpaceX** - Rocket manufacturer/launch operations
- **Paragon Plastics** - Thermos-formed plastic maker
- **Space Coast Regional Airport** - Helicopter training, weightless training, warbird museum and airport services



### CHARLES A. VON STEIN, INC.

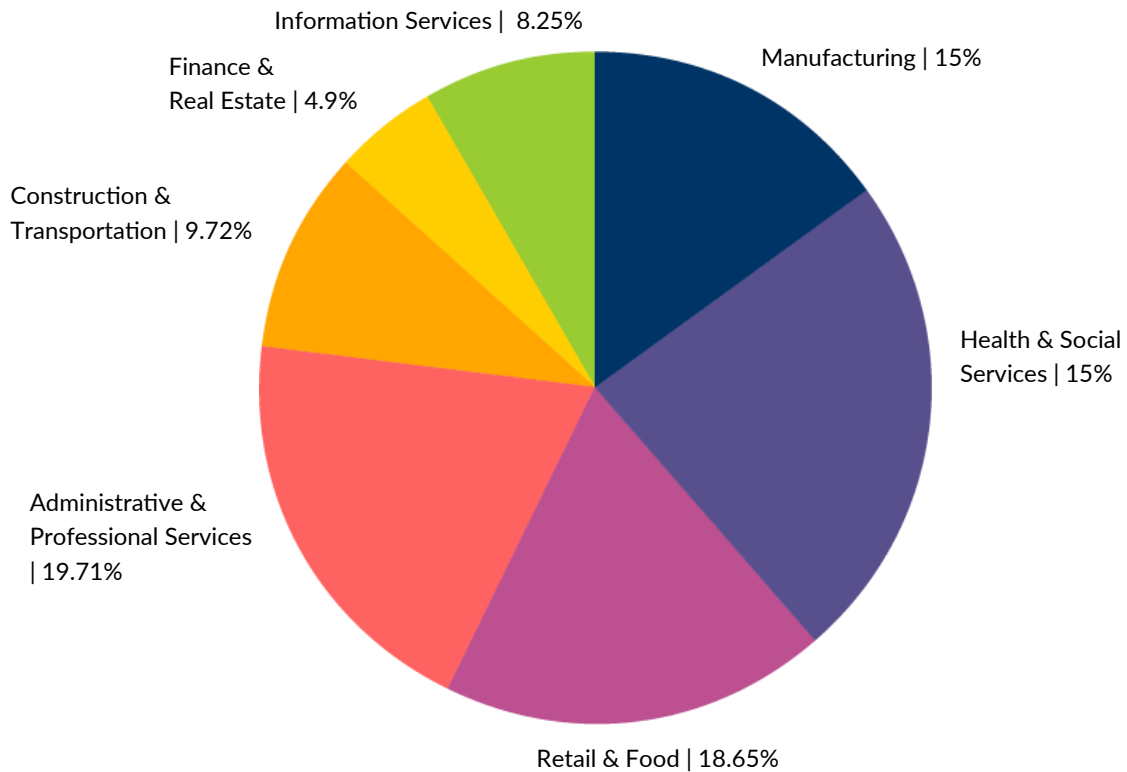
*Commercial Property Management,  
Sales & Leasing Specialists since 1963*  
626 Old Dixie Highway SW  
Vero Beach, FL 32962  
[www.vscrc.com](http://www.vscrc.com)

### CONTACT INFO:

Brevard County: 321.725.1961  
Indian River County: 772.778.4885  
Fax: 772.778.4908  
Leasing: [leasing@vscrc.com](mailto:leasing@vscrc.com)

## Titusville, FL | Industry Analysis

Titusville hosts a diversified variety of well-developed industries. This flourishing economic ecosystem fosters a robust environment for business that continues to contribute to the ongoing growth in the area. The breakdown of information found on the pie chart below illustrates data from an industry analysis of Titusville, FL. This industry information is helpful in better understanding the ample opportunity built into this area's local economy.



### CHARLES A. VON STEIN, INC.

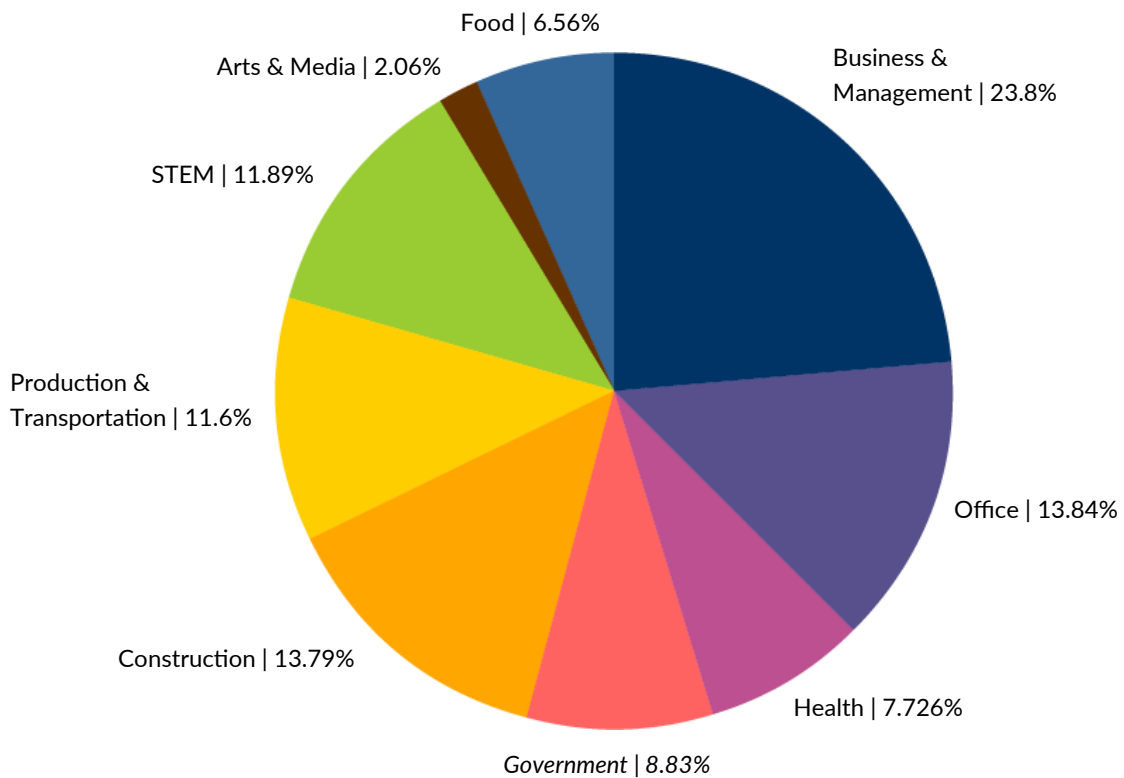
Commercial Property Management,  
Sales & Leasing Specialists since 1963  
626 Old Dixie Highway SW  
Vero Beach, FL 32962  
www.vscre.com

### CONTACT INFO:

Brevard County: 321.725.1961  
Indian River County: 772.778.4885  
Fax: 772.778.4908  
Leasing: leasing@vscre.com

## Titusville, FL | Occupations Analysis

Titusville also offers a large variety of occupations. This diversified economic ecosystem fosters a healthy job market that helps cultivate ongoing growth in the area. The compilation of information found on the pie chart below illustrates data from an occupation analysis of Titusville, FL. This employment information is an illuminating tool for better understanding the makeup of what Titusville has to offer both consumers and investors alike.



### CHARLES A. VON STEIN, INC.

Commercial Property Management,  
Sales & Leasing Specialists since 1963  
626 Old Dixie Highway SW  
Vero Beach, FL 32962  
www.vscre.com

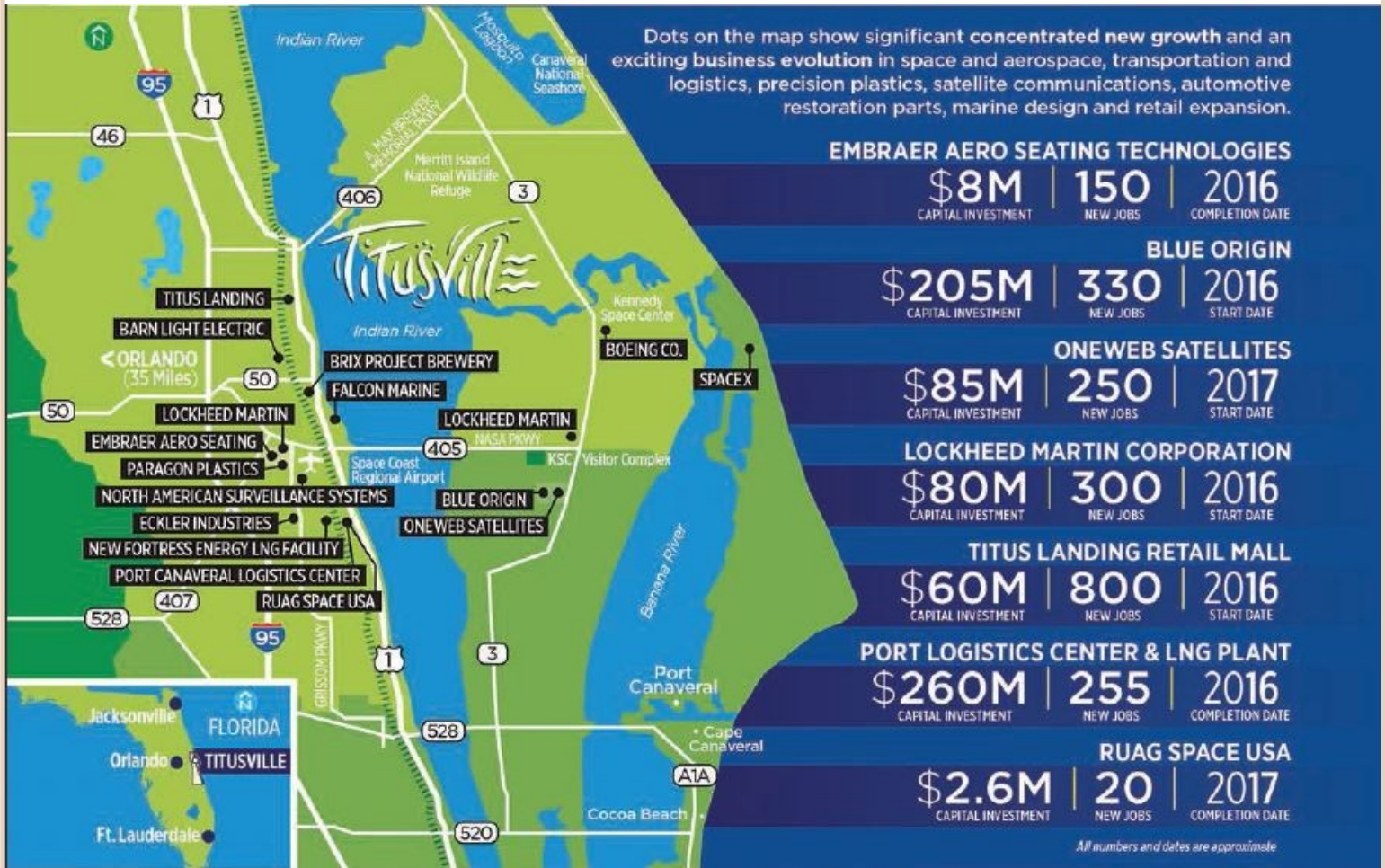
### CONTACT INFO:

Brevard County: 321.725.1961  
Indian River County: 772.778.4885  
Fax: 772.778.4908  
Leasing: leasing@vscre.com

# ECONOMIC GROWTH

City Square Professional Center

815 S Washington Avenue, Titusville, FL, 32780



**CHARLES A. VON STEIN, INC.**  
 Commercial Property Management,  
 Sales & Leasing Specialists since 1963  
 626 Old Dixie Highway SW  
 Vero Beach, FL 32962  
 www.vscree.com

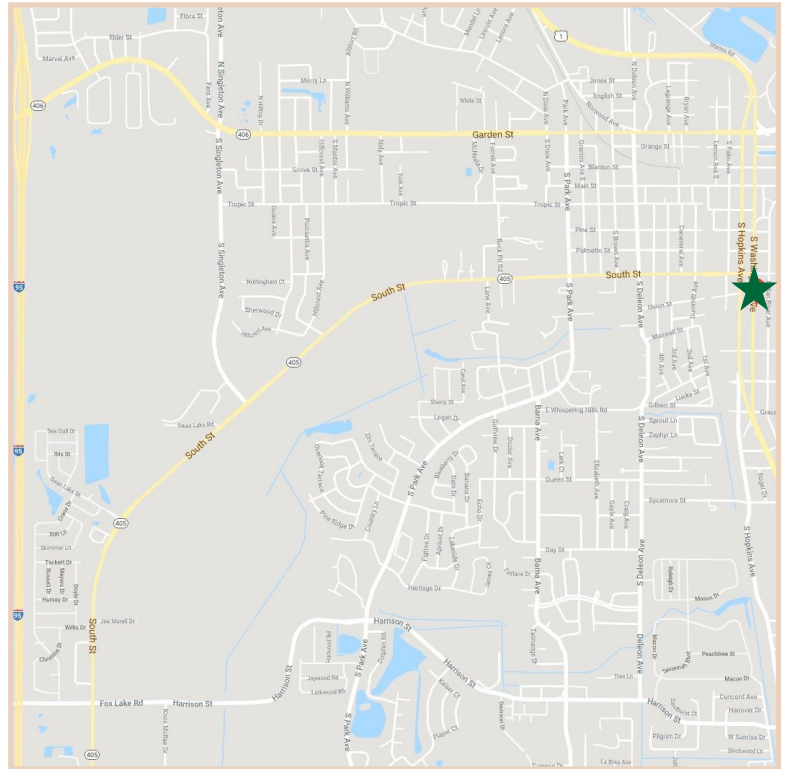
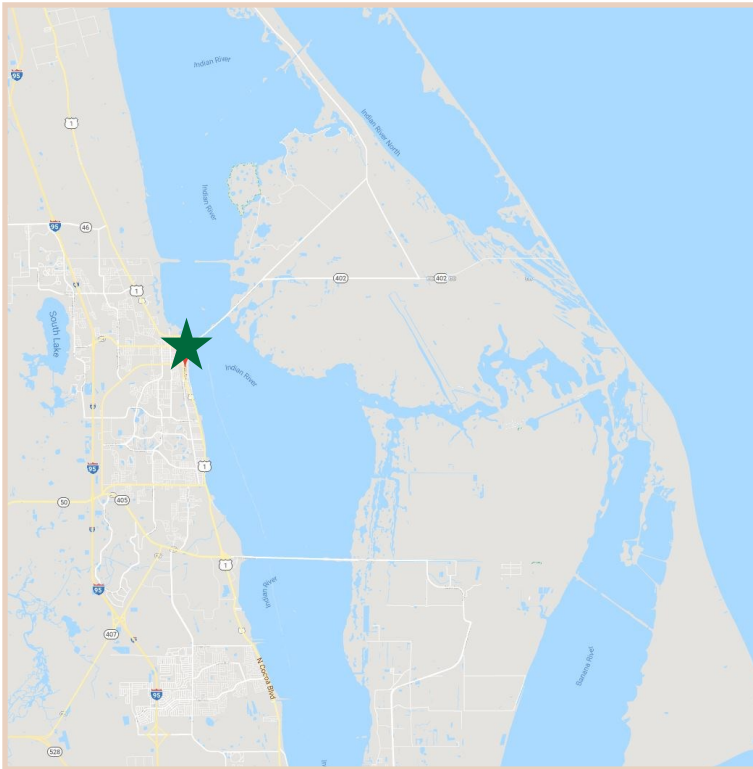
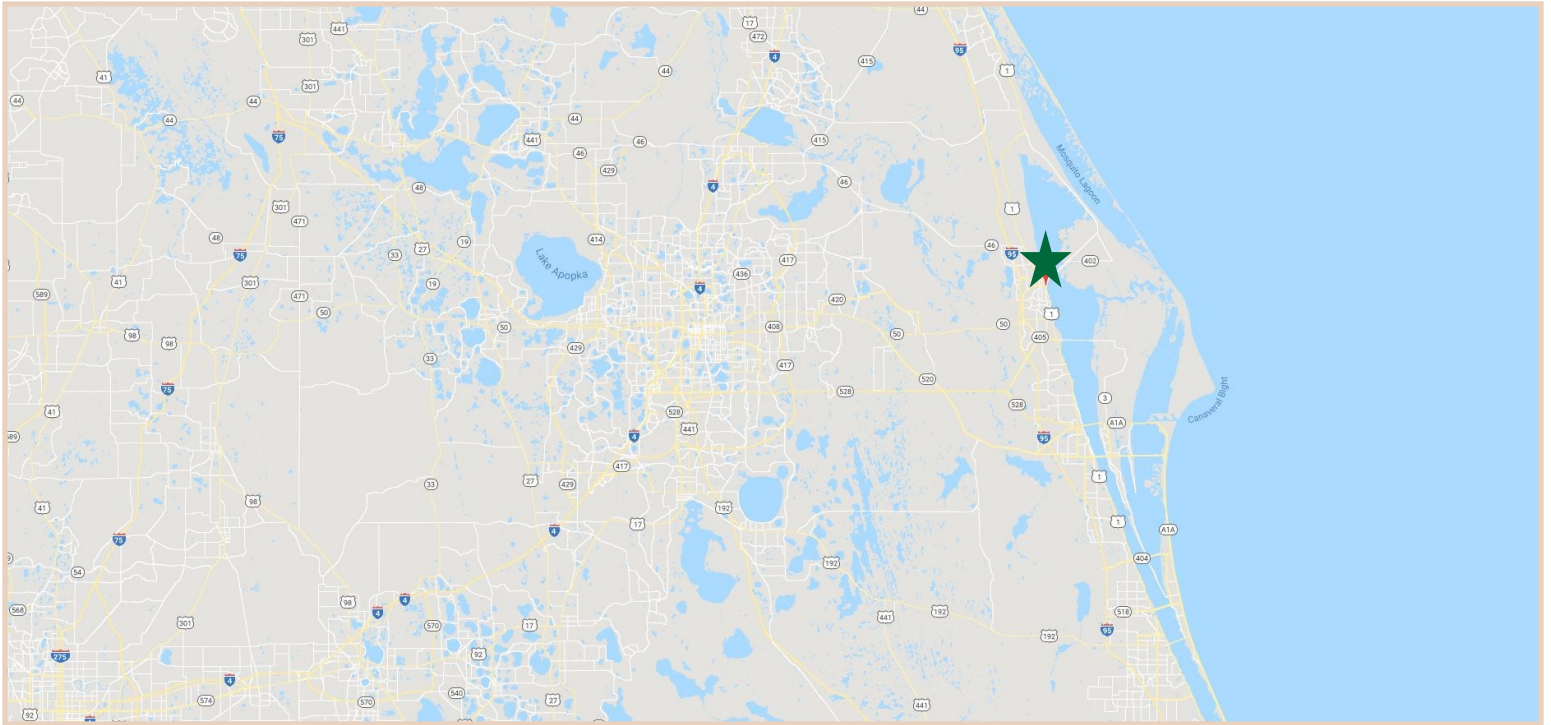
**CONTACT INFO:**

Brevard County: 321.725.1961  
 Indian River County: 772.778.4885  
 Fax: 772.778.4908  
 Leasing: leasing@vscree.com

# LOCATION MAPS

City Square Professional Center

815 S Washington Avenue, Titusville, FL, 32780



**1963**  
**CHARLES A. VON STEIN, INC.**  
*Commercial Property Management,  
Sales & Leasing Specialists since 1963*  
626 Old Dixie Highway SW  
Vero Beach, FL 32962  
[www.vscore.com](http://www.vscore.com)

**CONTACT INFO:**

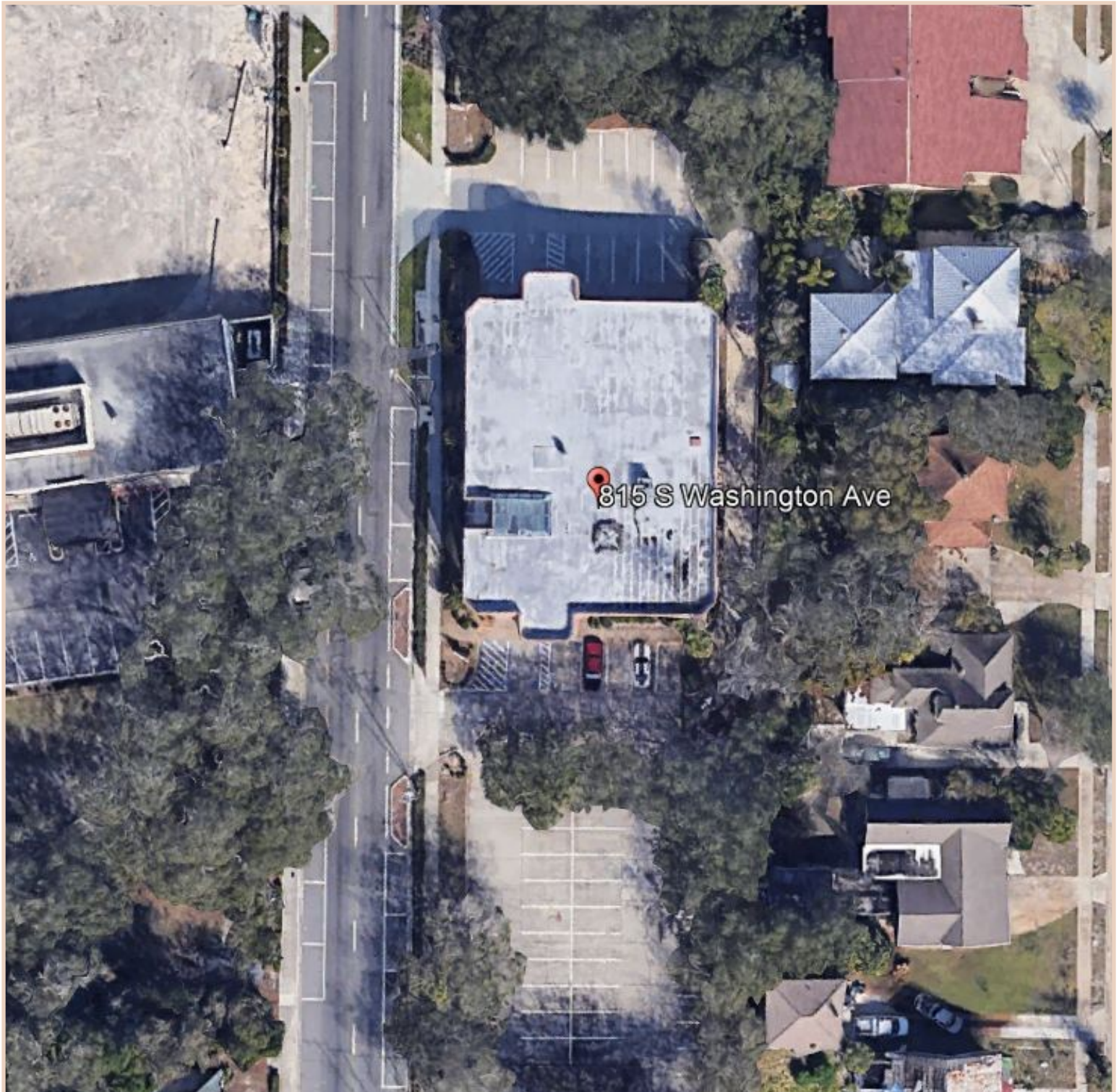
Brevard County:  
Indian River County:  
Fax:  
Leasing:

321.725.1961  
772.778.4885  
772.778.4908  
[leasing@vscre.com](mailto:leasing@vscre.com)

# AERIAL

City Square Professional Center

815 S Washington Avenue, Titusville, FL, 32780



## CHARLES A. VON STEIN, INC.

*Commercial Property Management,  
Sales & Leasing Specialists since 1963*  
626 Old Dixie Highway SW  
Vero Beach, FL 32962  
[www.vscrc.com](http://www.vscrc.com)

### CONTACT INFO:

Brevard County:	321.725.1961
Indian River County:	772.778.4885
Fax:	772.778.4908
Leasing:	<a href="mailto:leasing@vscrc.com">leasing@vscrc.com</a>

# ADDITIONAL PHOTOS

City Square Professional Center

815 S Washington Avenue, Titusville, FL, 32780



**CHARLES A. VON STEIN, INC.**  
Commercial Property Management,  
Sales & Leasing Specialists since 1963  
626 Old Dixie Highway SW  
Vero Beach, FL 32962  
[www.vscrc.com](http://www.vscrc.com)

**CONTACT INFO:**  
Brevard County: 321.725.1961  
Indian River County: 772.778.4885  
Fax: 772.778.4908  
Leasing: [leasing@vscrc.com](mailto:leasing@vscrc.com)

ALL INFORMATION FURNISHED REGARDING PROPERTY FOR SALE, RENTAL OR FINANCING SOURCES DEEMED RELIABLE, BUT NO WARRANTY OR REPRESENTATION IS MADE AS TO THE ACCURACY THEREOF AND SAME IS SUBMITTED SUBJECT TO ERRORS, OMISSIONS, CHANGE OF PRICE, RENTAL OR OTHER CONDITIONS, PRIOR SALE, LEASING OR FINANCING OR WITHDRAWAL WITHOUT NOTICE.