



2635 & 2717 PERALTA ST | OAKLAND, CA
19,500 & 23,000 SF Available Together or Separate at \$0.75 IG

Lee & Associates San Francisco Commercial Real Estate | 242 California Street, San Francisco, CA 94111 | www.lee-associates.com

All information furnished regarding property for sale, rental or financing is from sources deemed reliable, but no warranty or representation is made to the accuracy thereof and same is submitted to errors, omissions, change of price, rental or other conditions prior to sale, lease or financing or withdrawal without notice. No liability of any kind is to be imposed on the broker herein.

PROPERTY HIGHLIGHTS

2635 Peralta St

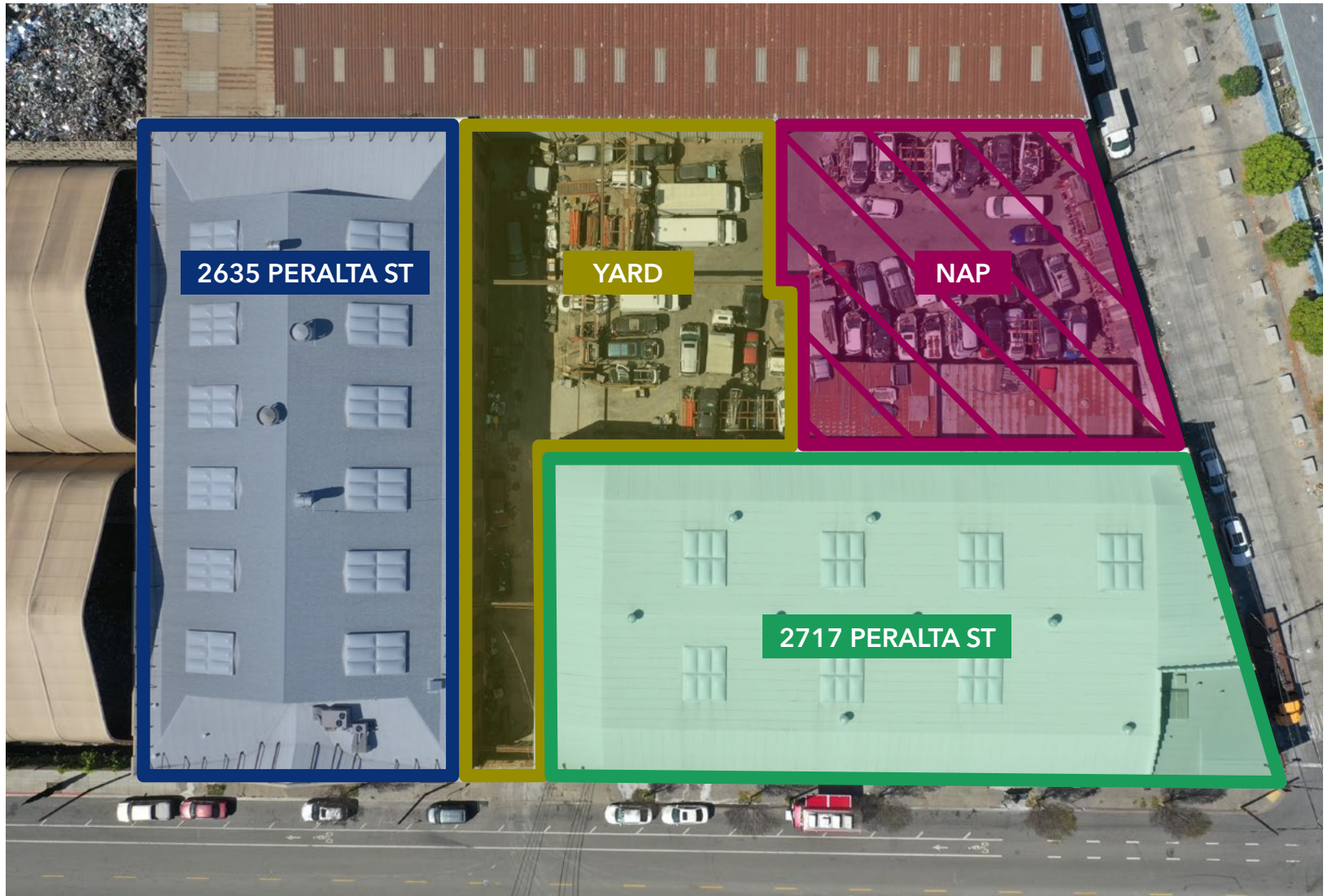
- 19,500 SqFt
- 18-26' Clear Height
- 1200 Amp, 120/240 Volt, 3-Phase*
- (3) 1 Ton Cranes
- (1) 2-Ton Crane
- (1) Loading Dock
- (1) Access Ramp
- New Roof in 2024

2717 Peralta St

- 23,000 SqFt
- 20' Clear Height
- 400 Amp, 120/480 Volt, 3-Phase*
- (4) 2-Ton Cranes
- (1) 1-Ton Crane
- New Roof in 2024
- Oversized Sliding Door along 28th St

[CIX-1A West Oakland Plan Area Commercial Industrial Mix - 1A Industrial Zone \(Business Enhancement\)](#)

*Tenant to verify





NON-ENDORSEMENT AND DISCLAIMER NOTICE

CONFIDENTIALITY AND DISCLAIMER

The information contained in the following Marketing Brochure is proprietary and strictly confidential. It is intended to be reviewed only by the party receiving it from Lee & Associates and should not be made available to any other person or entity without the written consent of Lee & Associates. This Marketing Brochure has been prepared to provide summary, unverified information to prospective purchasers, and to establish only a preliminary level of interest in the subject property. The information contained herein is not a substitute for a thorough due diligence investigation. Lee & Associates has not made any investigation, and makes no warranty or representation, with respect to the income or expenses for the subject property, the future projected financial performance of the property, the size and square footage of the property and improvements, the presence or absence of contaminating substances, PCB's or asbestos, the compliance with State and Federal regulations, the physical condition of the improvements thereon, or the financial condition or business prospects of any tenant, or any tenant's plans or intentions to continue its occupancy of the subject property. The information contained in this Marketing Brochure has been obtained from sources we believe to be reliable; however, Lee & Associates has not verified, and will not verify, any of the information contained herein, nor has Lee & Associates conducted any investigation regarding these matters and makes no warranty or representation whatsoever regarding the accuracy or completeness of the information provided. All potential buyers must take appropriate measures to verify all of the information set forth herein. © 2026 Lee & Associates. All rights reserved.

NON-ENDORSEMENT NOTICE

Lee & Associates is not affiliated with, sponsored by, or endorsed by any commercial tenant or lessee identified in this marketing package. The presence of any corporation's logo or name is not intended to indicate or imply affiliation with, or sponsorship or endorsement by, said corporation of Lee & Associates, its affiliates or subsidiaries, or any agent, product, service, or commercial listing of Lee & Associates, and is solely included for the purpose of providing tenant lessee information about this listing to prospective customers.

ALL PROPERTY SHOWINGS ARE BY APPOINTMENT ONLY. PLEASE CONSULT YOUR LEE & ASSOCIATES AGENT FOR MORE DETAILS.

Lee & Associates - www.lee-associates.com