

Millbank Tower & 30 Millbank

Fitted Office Space on
the River Thames from
817sqft - 24,000sqft

An iconic building on the banks of the River Thames

Designed by Ronald Ward & Partners, Millbank Tower has been an enduring landmark on the London skyline since its construction in 1963.

Millbank Tower and adjacent building 30 Millbank enjoy a coveted location on the River Thames, the gateway to Westminster and home to iconic institutions such as Burberry's brand headquarters, Tate Britain art gallery and Chelsea College of Arts.

Throughout its history, Millbank has been home to many high-profile political and other organisations including the United Nations, Central Statistical Office, the Environment Agency as well as being used as a general election campaign centre for both the Conservatives and Labour Party.

Now, with affordable, flexible leases, this iconic building and address is ready and available to welcome a new host of movers and shakers.



Affordable. Flexible. Fitted.

817 sqft - 24,000sqft

Location

Perfectly placed to enjoy everything that London has to offer

Located on the North side of the Thames, approximately equidistant from Pimlico (Victoria line) and Westminster (Circle, District and Jubilee lines) Underground Stations, both a short walk away from the property. The property is also within walking distance of Vauxhall and Victoria mainline stations. Closer still is Millbank Pier, with Thames Clipper services connecting you to Canary Wharf, Greenwich and beyond.

Occupiers are well serviced by a wide range of amenity positioned along Horseferry Road, including Pret a Manger and Ravello, a two minute walk from the property. Bars and restaurants aren't far away either, including The Cinnamon Club in Great Smith Street, a gourmet Indian restaurant in a former public library, is a favourite with the Westminster elite.





- 

Millbank Pier
3 mins walk
- 

Pimlico
12 mins walk
- 

Westminster
14 mins walk
- 

Vauxhall
13 mins walk
- 

St James's Park
16 mins walk
- 

London Victoria
25 mins walk

Times taken from Google Maps and are approximate only

Restaurants

- Footstool Restaurant
- Quirinale
- The Roux
- Quilon
- The Cinnamon Club
- The Vincent Rooms
- Rex Whistler
- The Blue Boar
- Osteria
- Millbank Spice
- City Café
- The English Pig
- Pizza Express
- Mathura
- Regency Café

Bars

- Millbank Lounge
- Marquis of Granby
- White Horse & Bower
- The Barley Mow
- Morpeth Arms
- The White Swan
- St Stephen's Tavern
- The Speaker
- The Royal Oak





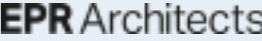

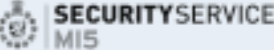


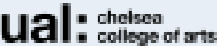
Health, Wellbeing & Culture

- St John's Gardens
- Millbank Gardens
- Victoria Tower Gardens
- Tate Britain
- Bannatyne's Health Club
- Dolphin Fitness Club

Cafés

- Relish Sandwich Shop
- Ravello Espresso
- Pret a Manger
- Starbucks
- Café Rocks
- Etsu Café
- Crussh
- Capsicum Deli
- Joe's Espresso Café
- Caffè Nero
- Tate Britain Café
- Regency Café
- Pret a Manger
- Chelsea College of Art Café
- The Cellarium

Local occupiers

- 
- 
- 
- 
- 
- 
- 
- 
- 
- 



Specifications



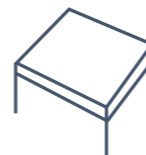
**24 hour concierge
reception**



Air conditioning



Showers



**Full access
raised floors**



WC's



Bike storage



**Metal tile suspended
ceiling with recessed
lights**



**Excellent natural
light throughout**



**Panoramic views
of London**

Millbank Tower

31 floors with unrivalled views over the River Thames and across central London

31		
30		
29		
28		
27		
26		
25		
24		
23		
22		
21		
20		
19		
18		
17		
16		
15		
14		
13		
12		
11		635 sqft
10		
09		
08		
07		
06	1,444 sqft	
05		
04		
03		880 sqft
02	6,538 sqft	
01		
GF		5,042 sqft
B		

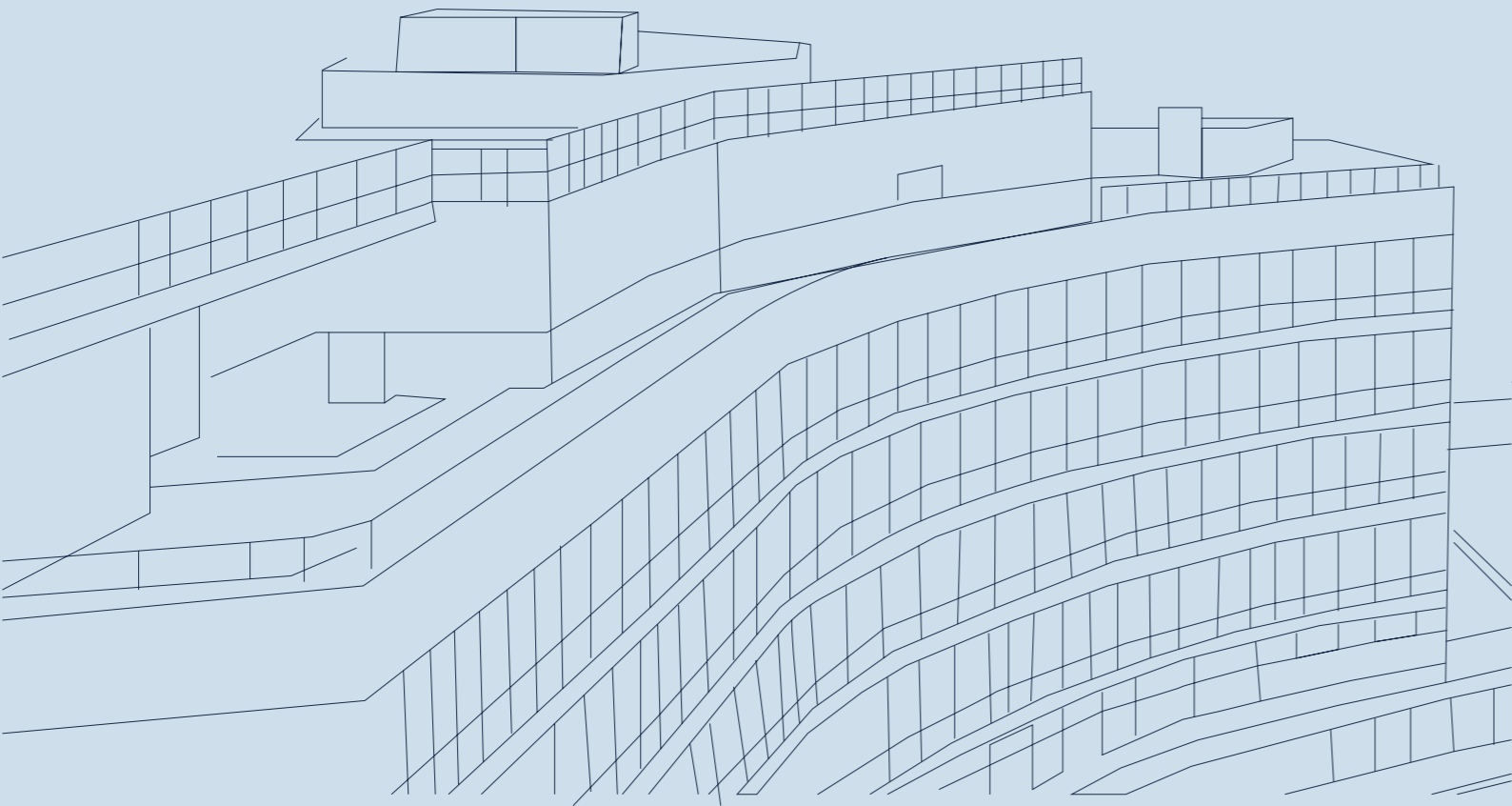
←
Towards
Vauxhall Bridge

→
Towards
Westminster 

*Can be split into smaller suites

Nine floors and Basement
next to the iconic tower

30 Millbank



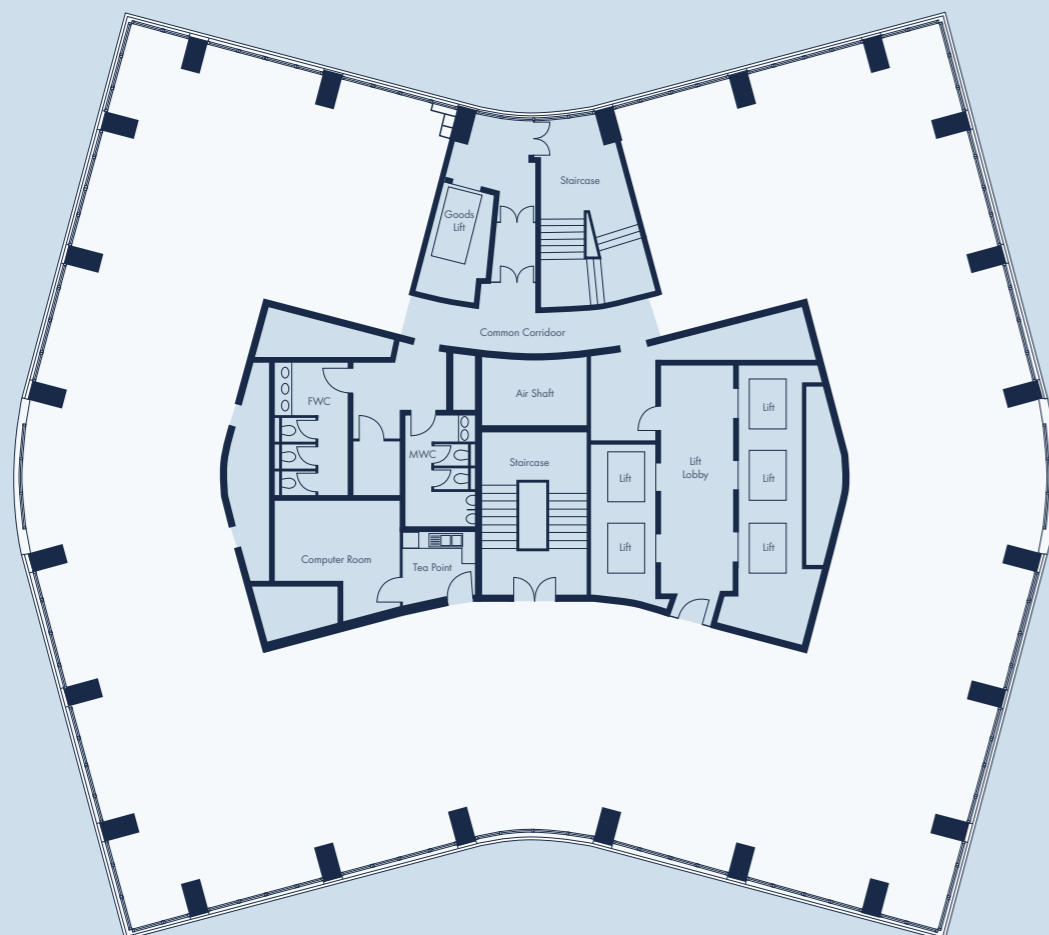
- Available Now
- Available March
- Under Offer

08		426 sqft	
07	11,130 sqft		
06			3,249 sqft
05			
04			4,714 sqft
03			4,467 sqft
02			7,167 sqft
01			
GF			
B		3,675 sqft	

←
Towards
Vauxhall Bridge

→
Towards
Westminster 

Detail



Indicative floorplate at Millbank Tower

A number of floors have been refurbished back to open plan with a specification that today's discerning companies and their staff expect. Others are available fitted out 'plug and play' for an occupier to move in quickly with limited fit out costs.

Lease

Flexible leases with mutual rolling breaks from September 2024

Rent

£30.00 per sq ft. inclusive of service charge

Rates

Ranging from £16.50 - £20.00 per sq ft payable (interested parties advised to make their own inquiries with the VOA)

Parking

Available by separate arrangement



**See it to believe it.
Contact the Agents to
book a viewing**



Harry Cormack
+44 7815 463 822
harry.cormack@levyrealestate.co.uk

Samantha Jones
+44 7800 539 387
Samantha.Jones@levyrealestate.co.uk



Michael Oliver
+44 7591 200793
Michael.Oliver@eu.jll.com

Georgina Ford
+44 7873 627738
Georgina.ford@eu.jll.com



Guy Bowring
+44 7831 185728
gbowring@tuckerman.co.uk

Scott Fisher
+44 7890 572225
sfisher@tuckerman.co.uk