



## Adamson House, Towers Business Park, Manchester, M20 2YY

---

### Serviced office spaces TO LET

- Business Park Location
- Secure Underground Parking
- Major Transport Links
- [///lodge.city.purely](http://lodge.city.purely)
- Wheelchair Accessible
- City/Town Centre
- Meeting Rooms

## Summary

<b>Available Size</b>	54 to 108 sq ft
<b>Rent</b>	£30.89 per sq ft
<b>Business Rates</b>	Upon Enquiry
<b>EPC Rating</b>	C

## Description

Enjoy peaceful surroundings yet remain close to the action with business base at our modern Adamson House workspace in Didsbury, a leafy suburb in Manchester's 'stockbroker belt'. Just five miles south of the city centre, its home to a range of industries including household names in technology and aviation.

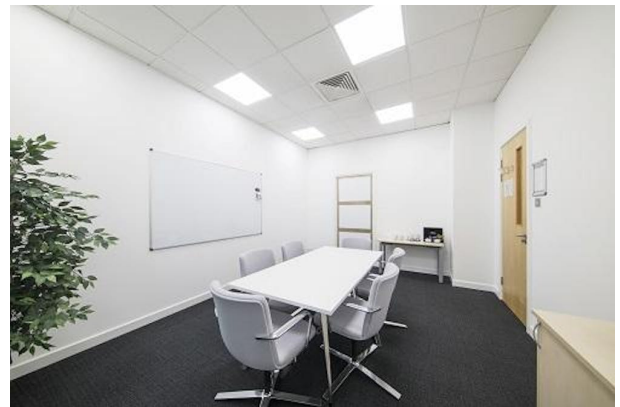
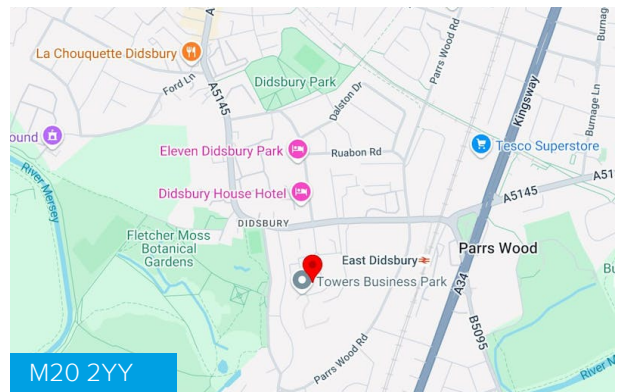
Our beautifully designed workspace has a state-of-the-art videoconferencing studio, a relaxing terrace and secure parking.

## Location

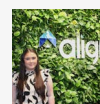
Adamson House is located at the South of the city centre of Manchester in the town of Didsbury, just off the A34. Transport links are excellent with Didsbury Cricket Club bus stop (Stop N) a minute walk away located along Wilmslow Road. Access to East Didsbury metro link is 0.5 miles away, and Easy Didsbury train station is 0.3 miles away, providing access in and around the city with bars and restaurants within walking distance.

The M60 can be accessed from the South of the site, providing access to the M1 North and South, offering wider linkages to large cities such as Leeds, Edinburgh and London.

Manchester Airport is 5.7 miles South of the site.



## Viewing & Further Information



**Caitlin Parker**

01609 797 330

[caitlin.parker@alignpropertypartners.co.uk](mailto:caitlin.parker@alignpropertypartners.co.uk)

**View Properties Here**  
[www.alignpropertypartners.co.uk](http://www.alignpropertypartners.co.uk)

