

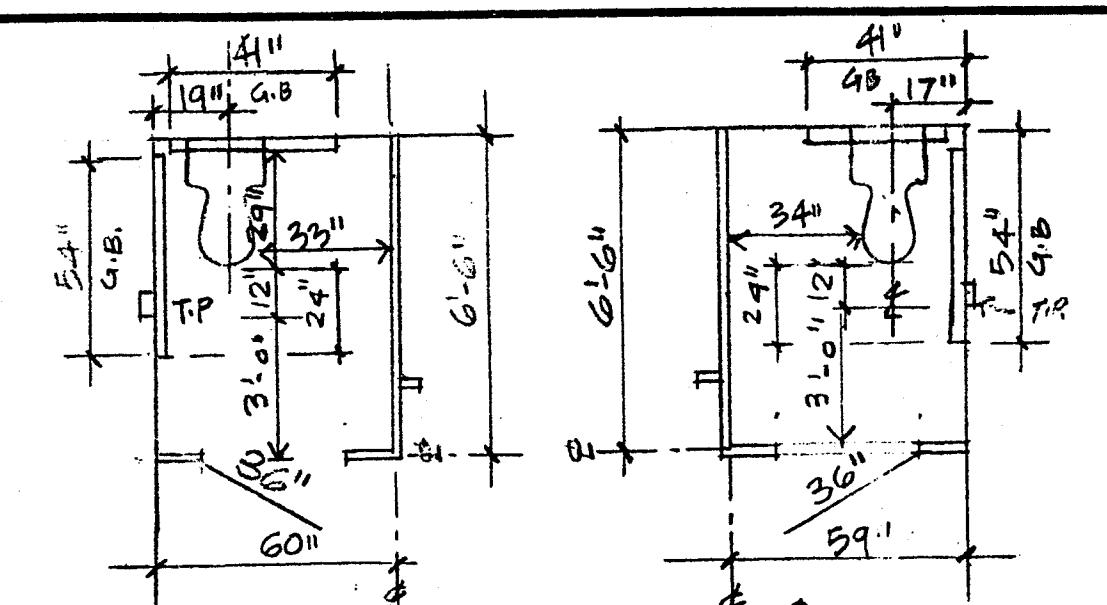
REVISIONS	BY
3-23-98	SH
4-29-98	SH
5-28-98	SH
6-13-98	SH
7-23-98	SH
7-30-98	SH
8-19-98	SH

PROPOSED RETAIL STORE FOR:
COPY WORLD INC.
 1375 UNIVERSITY AVENUE, BERKELEY

255 LOS ALTOS DR.
 KENSINGTON
 CA 94708
 510-527-1850

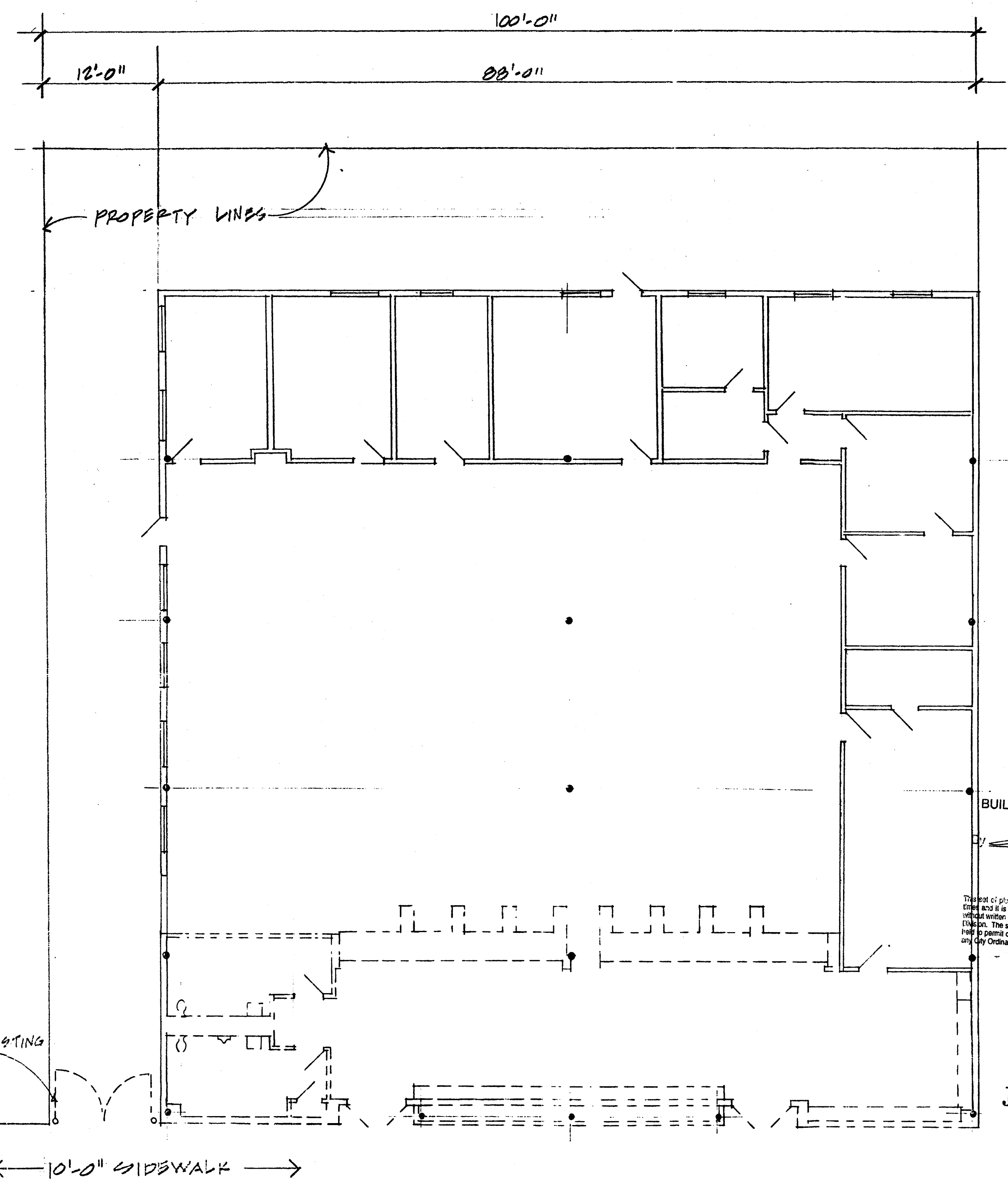
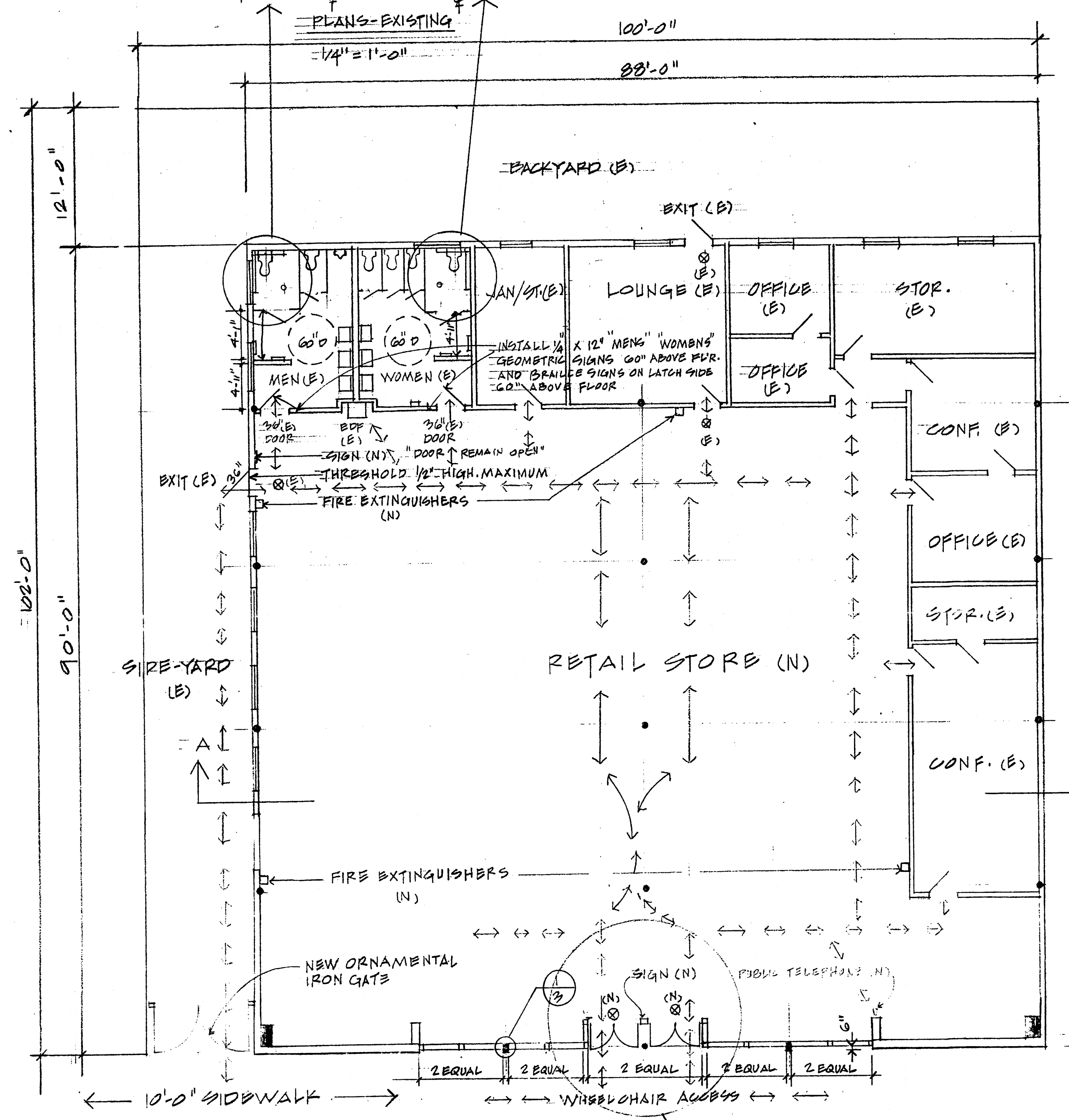
AIA
 ARCHITECT
SYED V. HUSAIN

Date: 3-1998
 Scale: SHOWN
 Drawn: SH
 Job: 2-98
 Sheet: **2**
 Of 3 Sheets



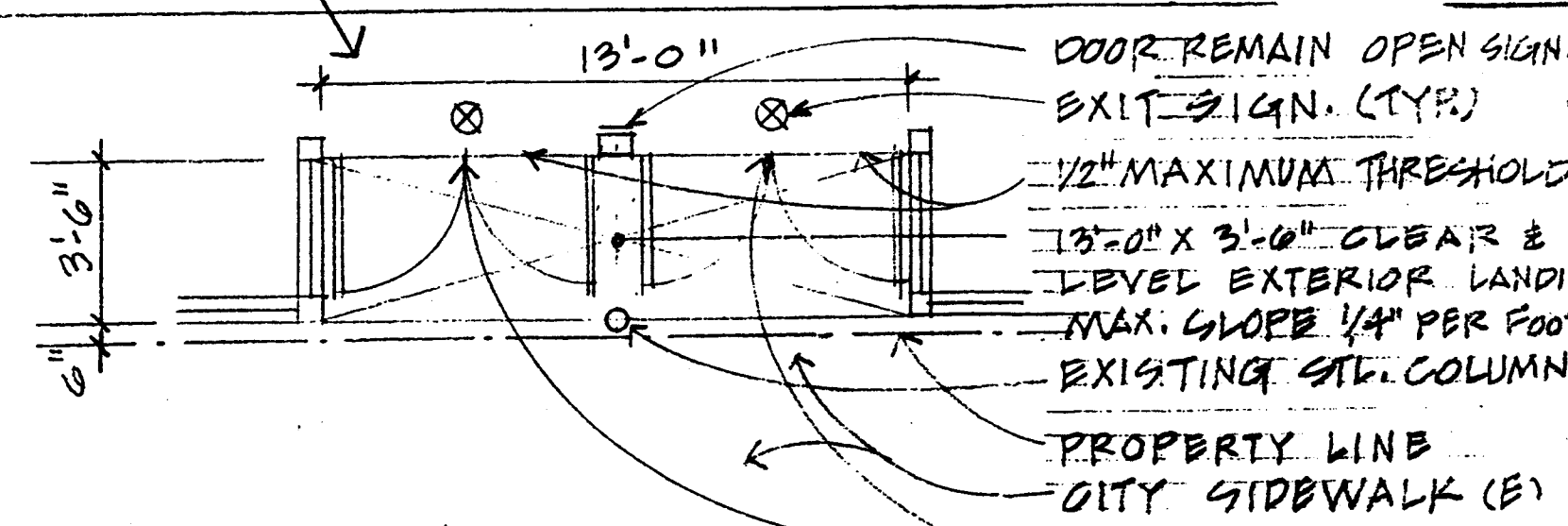
THIS DOOR TO REMAIN UNLOCKED
 WHENEVER BUILDING IS OCCUPIED.

DOOR REMAIN OPEN SIGN



← UNIVERSITY AVE. →

FLOOR PLAN - PROPOSED
 1/4" = 1'-0"



FLOOR PLAN AT ENTRY
 1/4" = 1'-0"

- DOOR REMAIN OPEN SIGN.
- EXIT SIGN (TYR)
- 1/2" MAXIMUM THRESHOLD.
- 13'-0" X 3'-0" CLEAR & LEVEL EXTERIOR LANDING
- MAX. SLOPE 1/4" PER FOOT
- EXISTING STD. COLUMN
- PROPERTY LINE
- CITY SIDEWALK (E)
- STOREFRONT ENTRY DOORS: PROVIDE:
 - LEVER, SINGLE-EFFORT HARDWARE AT 36" ABOVE FLOOR.
 - 10" KICK PLATE AT BOTTOM OF EACH DOOR.
 - DOOR CLOSER REQUIRING LESS THAN 8.5 LB. TOTAL PRESSURE
 - LESS THAN 1/2" THRESHOLD ON BOTH SIDES.

← UNIVERSITY AVE. →

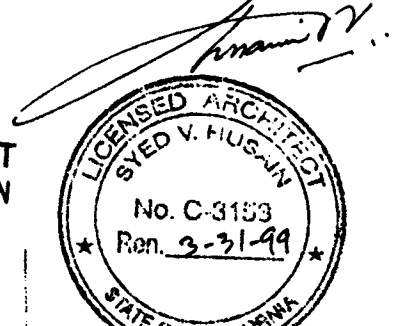
FLOOR PLAN - EXISTING
 1/8" = 1'-0"



LEGEND

- EXISTING WALLS / COL'S.
- NEW WALLS
- WALLS TO BE REMOVED
- EXISTING DOORS
- NEW DOORS
- EXIT SIGN

BERKELEY FIRE DEPARTMENT
 APPROVED, SUBJECT TO FIELD INSPECTION
 BY
 DIVISION OF FIRE PREVENTION



BUILDING & SAFETY DIVISION
 City Planning Department
 APPROVED
 1998

JOB SITE