



60 GROSVENOR STREET / SELF CONTAINED OFFICE / 4,367 SQ FT

T/G

AN ESTEEMED SELF-CONTAINED COURTYARD FLOOR & LOWER GROUND OFFICE SITUATED ON ONE OF MAYFAIR'S MOST COVETED STREETS.

60 Grosvenor Street is a stunning Grade II-listed Georgian townhouse. This luxury red brick property is located in the stylish and exclusive Mayfair submarket.

Ideally positioned within minutes of Bond Street and Oxford Circus stations, the building is conveniently close to transportation hubs and is home to an array of high-end boutiques, luxury hotels, and fine dining establishments.

The Courtyard Floor and Lower Ground office presents a unique opportunity to acquire a fantastic self-contained space for a business of 50-70+ employees.

The Courtyard Floor provides direct access to the sophisticated courtyard garden, which is available for private hire.

The Lower Ground Floor offers abundant meeting room facilities.





Available Space

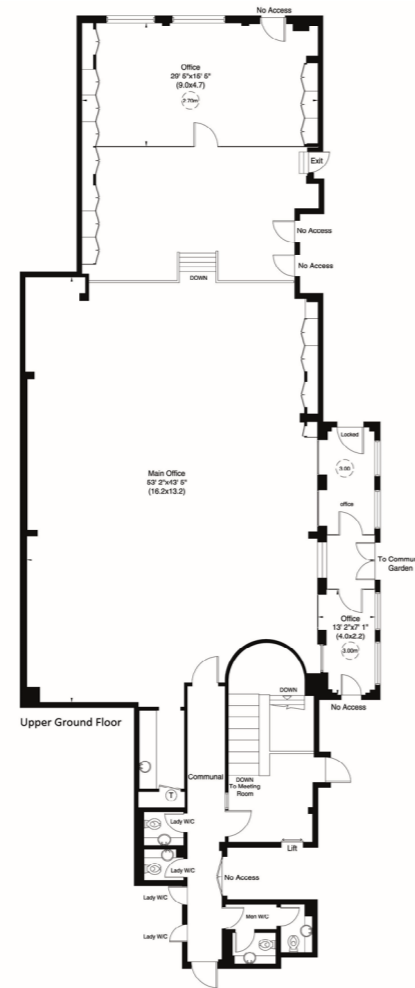
Floor	Size - SQ FT	Rent	Status
Courtyard Floor	2,957	P.O.A.	Available
Lower Ground	1,410	P.O.A.	Available

Self-contained space with dedicated entrance on Grosvenor Street
 Building reception & front of house
 Direct access into the Courtyard Garden

COURTYARD FLOOR

2,957 SQ FT

- Self-contained space with dedicated entrance on Grosvenor Street
- Building reception and front of house
- Direct access into the Courtyard
- Open plan layout
- Fully fitted with 50-70+ workstations



LOWER GROUND MEETING & BOARDROOM FACILITIES

1,410 SQ FT

- 8 Meeting and Boardrooms



Touch *Get in*

Natalie Lelliott

Phone / +44 7776 388 567

Email / natalie@tlg.london

Mia Solomon

Phone / +44 7835 139 168

Email / mia@tlg.london

Team TLG

Phone / +44 203 285 8300

Email / hello@tlg.london

Web / tlg.london

Social / [tlg-london](https://www.instagram.com/tlg-london)

MISREPRESENTATION ACT/COPYRIGHT/DISCLAIMER – TLG London Limited, for themselves and for the Lessor of this property, whose agents they are, give notice that (1) the particulars and any further information communicated by any means to potential Lessees of the property described in the particulars, or their advisers, in connection with the possible letting of the property are provided solely for the purpose of assisting potential lessees in deciding whether they wish to proceed with further investigation of the property and do not constitute either the whole or any part of the invitation, offer or contract for lease of the property; (2) all descriptions, dimensions, references to condition and necessary permissions for use and occupation and other details are given in good faith and are believed to be correct as at the date of the particulars (or the date of the relevant information if earlier). However, potential lessees are not entitled to rely on them as statements or representations of fact but should satisfy themselves by searches, enquires, surveys and inspections or otherwise with regard to the accuracy of such details. No responsibility or liability is or will be accepted by TLG London Limited, the lessor of the property or any of their respective subsidiaries, affiliates, directors, officers, representatives, employees, advisors, or agents for any loss or damage suffered by any party, resulting from reliance on the particulars or any other information communicated by any means to that party, or its advisers, in connection with the possible letting of the property. No person in the employment of TLG London Limited or the lessor has authority to make or give any representation or warranty, express or implied, in relation to the property. March 2024.