

NEW CONSTRUCTION OFFICE SPACE

1380 CENTER ROAD, VENICE, FLORIDA 34292

FOR LEASE



Scott Mersinger

Partner

608.432.2531

Scott.Mersinger@TrinityCRE.com

Anthony Gambino

Associate

518.361.5002

Anthony.Gambino@TrinityCRE.com

Rick Ikeler

Senior Advisor

239.334.3040 x207

Rick.Ikeler@TrinityCRE.com

Dan O'Berski

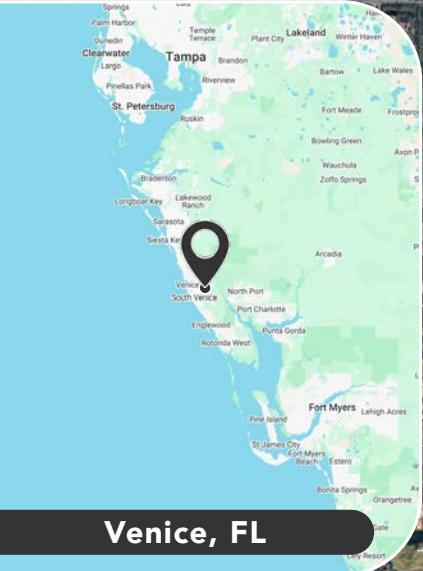
Partner/Managing Broker

239.334.3040

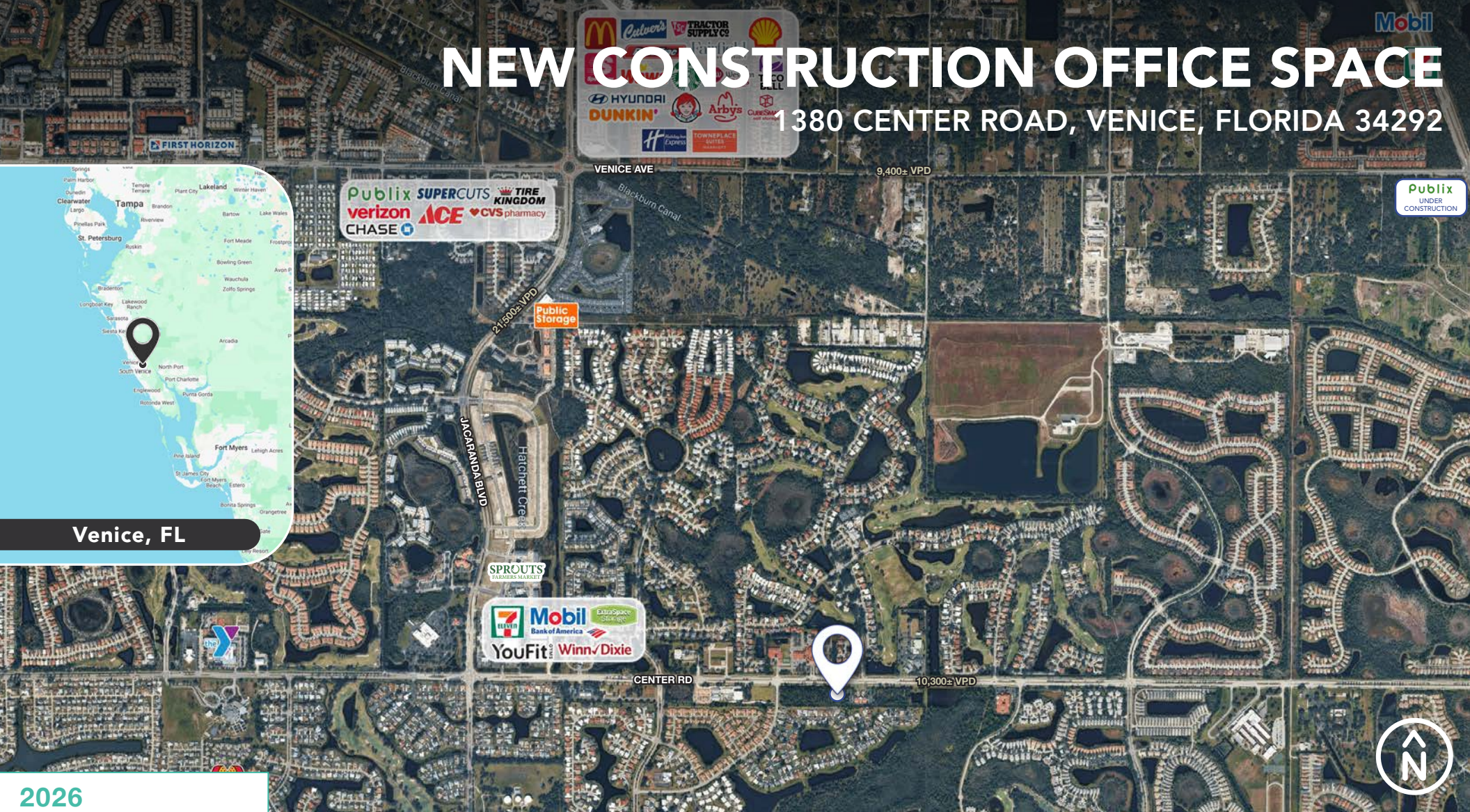
Dan.OBerski@TrinityCRE.com

NEW CONSTRUCTION OFFICE SPACE

1380 CENTER ROAD, VENICE, FLORIDA 34292



Venice, FL



2026 DEMOGRAPHICS 1380 CENTER ROAD

	1 MILE	3 MILE	5 MILE
AVERAGE H.H INCOME	\$115,268	\$124,561	\$128,737
POPULATION	5,819	43,055	96,837
EMPLOYMENT DENSITY	855	11,608	28,953

PROPERTY FEATURES

LEASE RATE	Call for Details
AVAILABLE	5,064± SF 1.22 AC
ZONING	OPI (Sarasota County)
LOCATION	1380 Center Road offers convenient access along Center Road in Venice, with a functional layout and on-site area for parking.

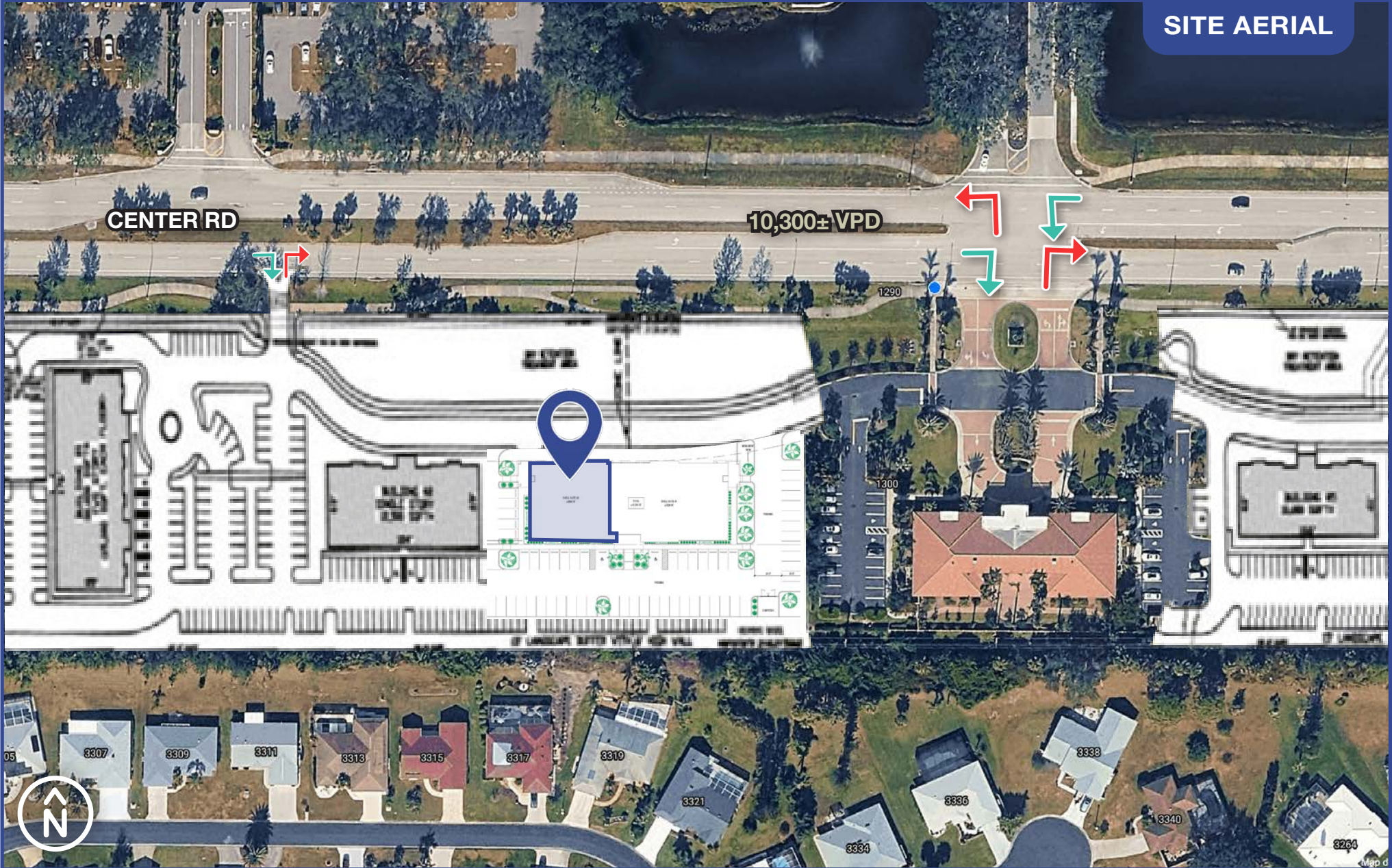


TrinityCRE.com
9450 Corkscrew Palms Cir • Suite 101 • Estero, FL 33928
© 2026 Trinity Commercial Group
This information is considered accurate, but not guaranteed.



NEW CONSTRUCTION OFFICE SPACE

1380 CENTER ROAD, VENICE, FLORIDA 34292



SITE AERIAL

CENTER RD

10,300± VPD

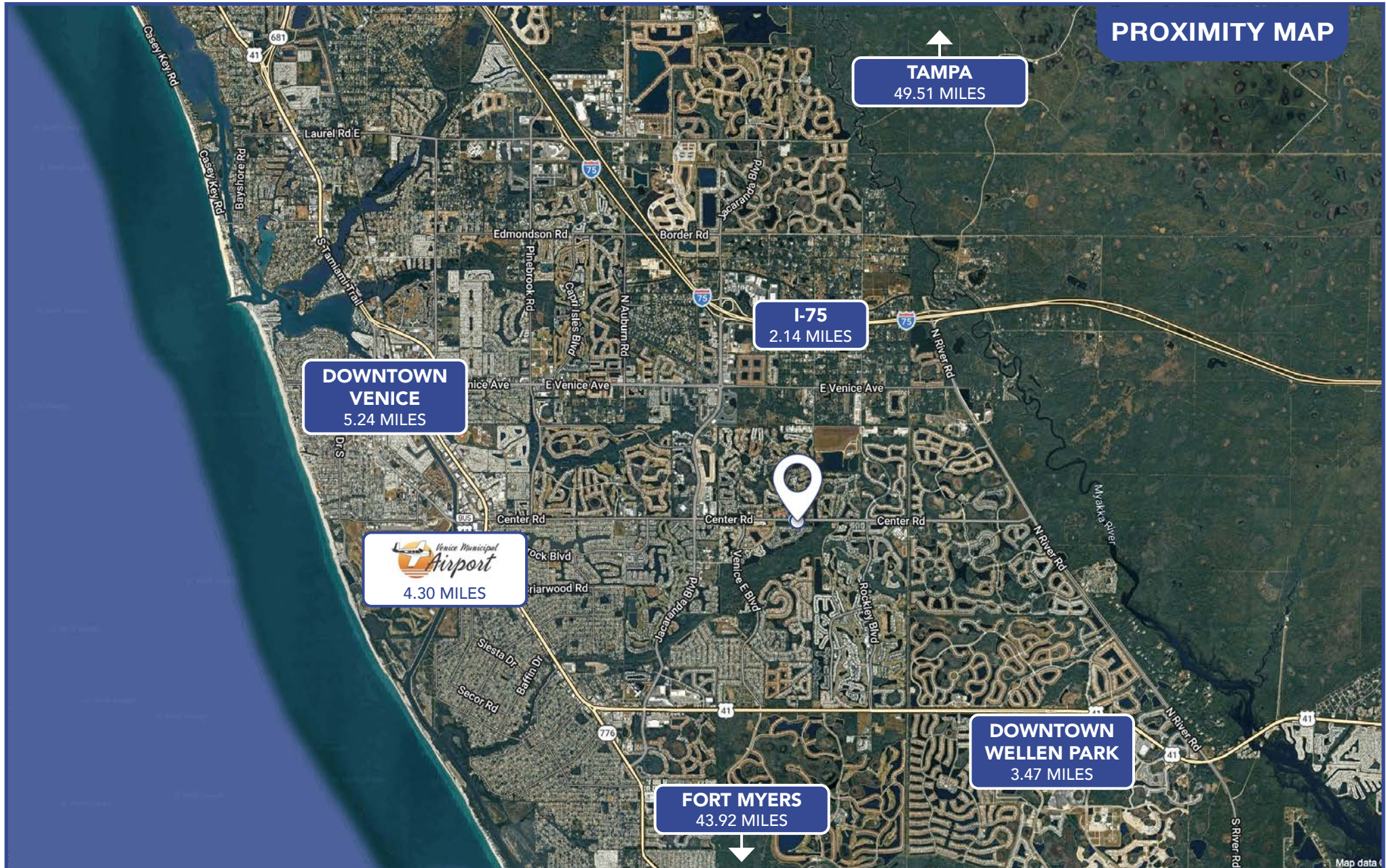


TrinityCRE.com
9450 Corkscrew Palms Cir • Suite 101 • Estero, FL 33928
© 2026 Trinity Commercial Group
This information is considered accurate, but not guaranteed.



NEW CONSTRUCTION OFFICE SPACE

1380 CENTER ROAD, VENICE, FLORIDA 34292



TrinityCRE.com
9450 Corkscrew Palms Cir • Suite 101 • Estero, FL 33928
© 2026 Trinity Commercial Group
This information is considered accurate, but not guaranteed.



NEW CONSTRUCTION OFFICE SPACE

1380 CENTER ROAD, VENICE, FLORIDA 34292



TrinityCRE.com
9450 Corkscrew Palms Cir • Suite 101 • Estero, FL 33928
© 2026 Trinity Commercial Group
This information is considered accurate, but not guaranteed.

