



FOR LEASE

7093 SOUTHERN BOULEVARD
WEST PALM BEACH, FL 33413

INDUSTRIAL OUTDOOR STORAGE



OVERVIEW

STL Commercial is pleased to present the opportunity to lease a ±1.21 acre industrial outdoor storage property located at 7093 Southern Blvd in West Palm Beach FL.

7093 Southern Blvd is a prime ±1.21-acre industrial outdoor storage (IOS) site offered for lease. The property features a fully crushed asphalt surface, fencing, and is configured for immediate yard, fleet, contractor or laydown use.

Ideally positioned along Southern Boulevard, one of Palm Beach County's most heavily traveled commercial corridors, offering high visibility, prominent frontage for equipment, fleet, and signage, and convenient ingress and egress for seamless access.

The property provides exceptional regional connectivity with easy access to I-95, FL Turnpike, Downtown West Palm Beach, Port of Palm Beach, Palm Beach International Airport, Martin County, Broward County and Miami Dade.

SITE SUMMARY

ADDRESS: 7093 Southern Blvd

CITY: West Palm Beach

ASKING RENT / MONTH: \$16,000 + NNN

ASKING RENT PSF: \$3.66 PSF + NNN

LAND SF: 52,512 SF

LAND ACRES: 1.21 AC

ZONING: IL - Industrial

PROPERTY TYPE: Industrial Outdoor Storage "IOS"

HIGHLIGHTS

- EASY ACCESS TO I-95 AND THE FL TURNPIKE
- 1.21 ACRES
- ZONED IL - LIGHT INDUSTRIAL
- FRONTAGE ON SOUTHERN BLVD



7093 SOUTHERN BLVD - WEST PALM BEACH, FL 33413

MAX LORIA | MANAGING BROKER | 561.901.1402

DAVID RICHMAN | VP INVESTMENT SALES | 847.772.7159

This information has been obtained from sources believed reliable. We have not verified it and make no guarantee, warranty or representation about it.

AERIAL PHOTOS



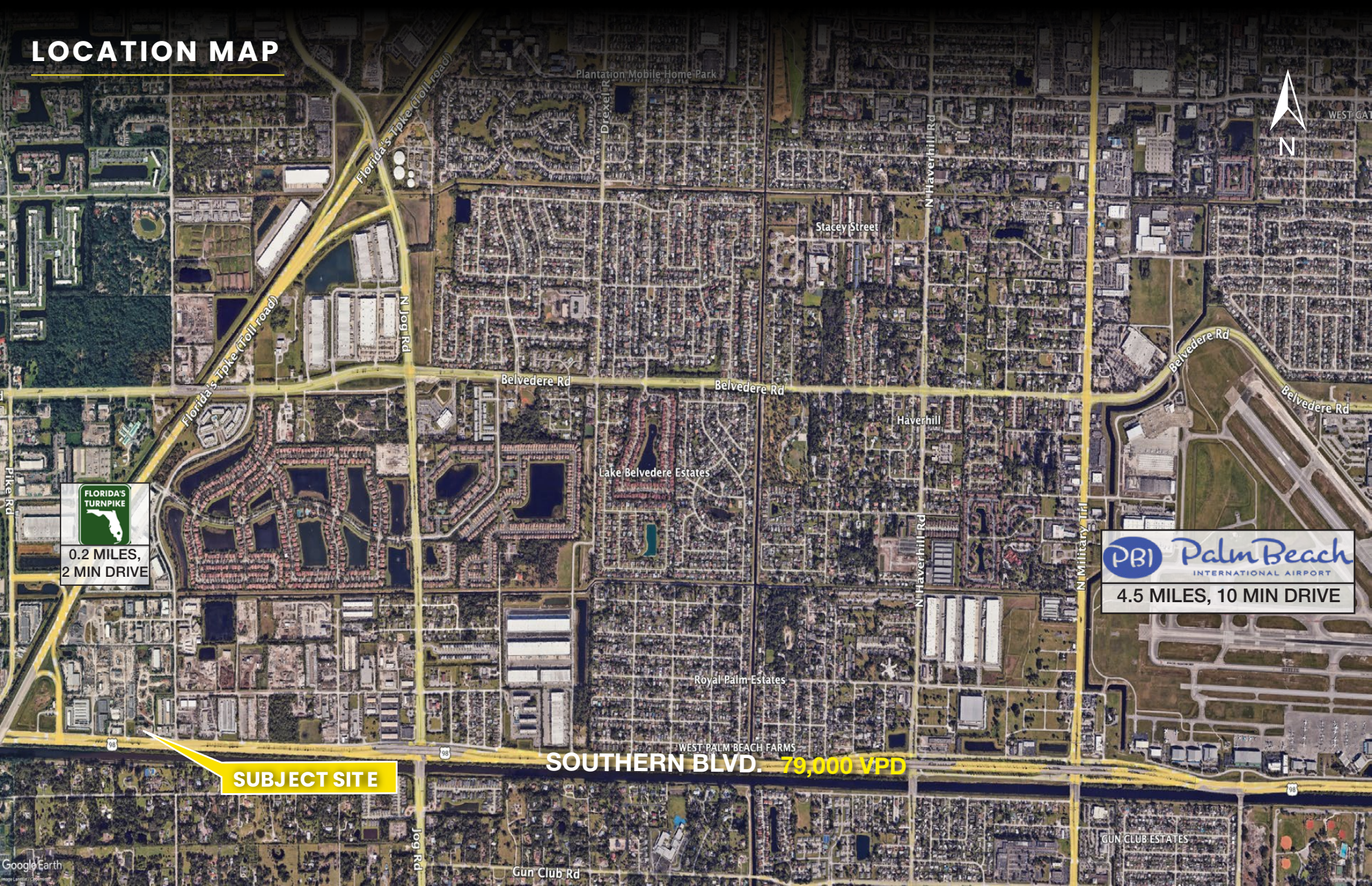
7093 SOUTHERN BLVD - WEST PALM BEACH, FL 33413

MAX LORIA | MANAGING BROKER | 561.901.1402
DAVID RICHMAN | VP INVESTMENT SALES | 847.772.7159

This information has been obtained from sources believed reliable. We have not verified it and make no guarantee, warranty or representation about it.

STL
COMMERCIAL

LOCATION MAP



FLORIDA'S TURNPIKE
0.2 MILES,
2 MIN DRIVE

PBI Palm Beach INTERNATIONAL AIRPORT
4.5 MILES, 10 MIN DRIVE

SUBJECT SITE

SOUTHERN BLVD. 79,000 VPD

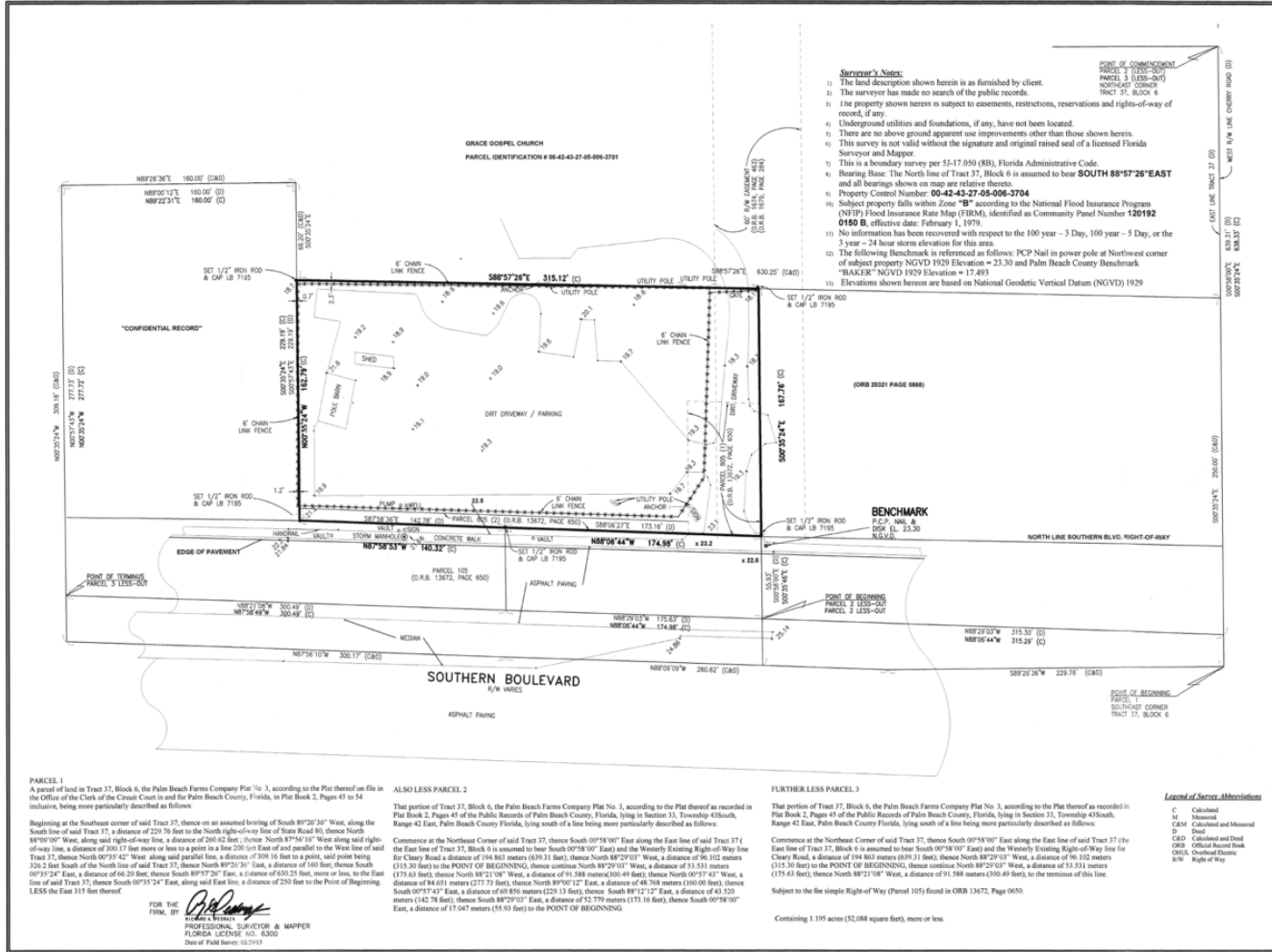
7093 SOUTHERN BLVD - WEST PALM BEACH, FL 33413

MAX LORIA | MANAGING BROKER | 561.901.1402
DAVID RICHMAN | VP INVESTMENT SALES | 847.772.7159

This information has been obtained from sources believed reliable. We have not verified it and make no guarantee, warranty or representation about it.

STL
COMMERCIAL

SITE SURVEY



PRISM SURVEYING, INC.
Surveyors - Mappers - Consultants
17721 62nd Road N, Loxahatchee, FL 33470
561-204-1055 - Fax 561-793-3574

BOUNDARY SURVEY

7093 SOUTHERN BOULEVARD WEST PALM BEACH, FL.

PREPARED FOR
7093 L.L.C.

PROJECT NO.
15-014

DRAWN BY
D.L.M.

APPROVED BY
ROD PEDRAZA, PSM 0438105

NO DATE REVISION

SHEET TITLE
BOUNDARY SURVEY

SHEET NUMBER
1 OF 1

7093 SOUTHERN BLVD - WEST PALM BEACH, FL 33413

MAX LORIA | MANAGING BROKER | 561.901.1402
DAVID RICHMAN | VP INVESTMENT SALES | 847.772.7159

This information has been obtained from sources believed reliable. We have not verified it and make no guarantee, warranty or representation about it.





MAX LORIA
MANAGING BROKER
MAX@STL-ADVISORS.COM
561.901.1402

DAVID RICHMAN
VP INVESTMENT SALES
DAVID@STL-ADVISORS.COM
847.772.7159