



LEASE

1848 Industrial Way

Sanger, CA 93657

PRESENTED BY:

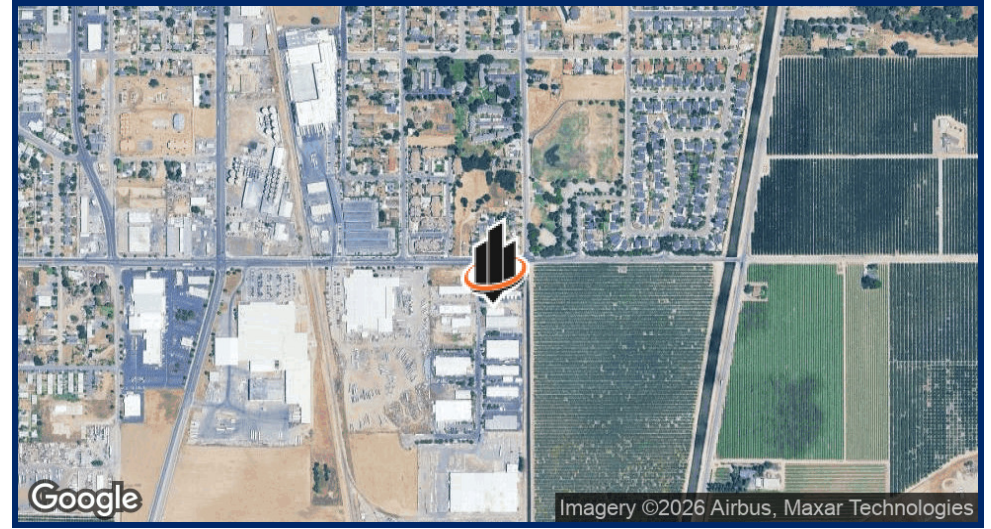
CAMERON GRAHAM

Phone: 559.400.0830

cameron.graham@svn.com

CalDRE #01970844

PROPERTY SUMMARY



OFFERING SUMMARY

LEASE RATE:	\$1.00 SF/month (NNN)
BUILDING SIZE:	4,940 SF
LOT SIZE:	28,593 SF
YEAR BUILT:	1999
ZONING:	M-L
APN:	332-190-27

PROPERTY OVERVIEW

1848 Industrial Way offers a modern industrial space with a flexible layout, high ceilings, and ample parking. The well-maintained facility provides easy access for trucks and heavy machinery, along with the option for custom build-outs and modifications. Managed by a professional team, this efficient property is designed to accommodate a variety of business needs.

PROPERTY HIGHLIGHTS

- Versatile customizable industrial space
- High ceilings and modern design
- Ample parking for tenants and visitors
- Easy access for trucks and heavy machinery
- Prime location in Sanger, CA

CAMERON GRAHAM

O: 559.400.0830
cameron.graham@svn.com
CalDRE #01970844

ADDITIONAL PHOTOS

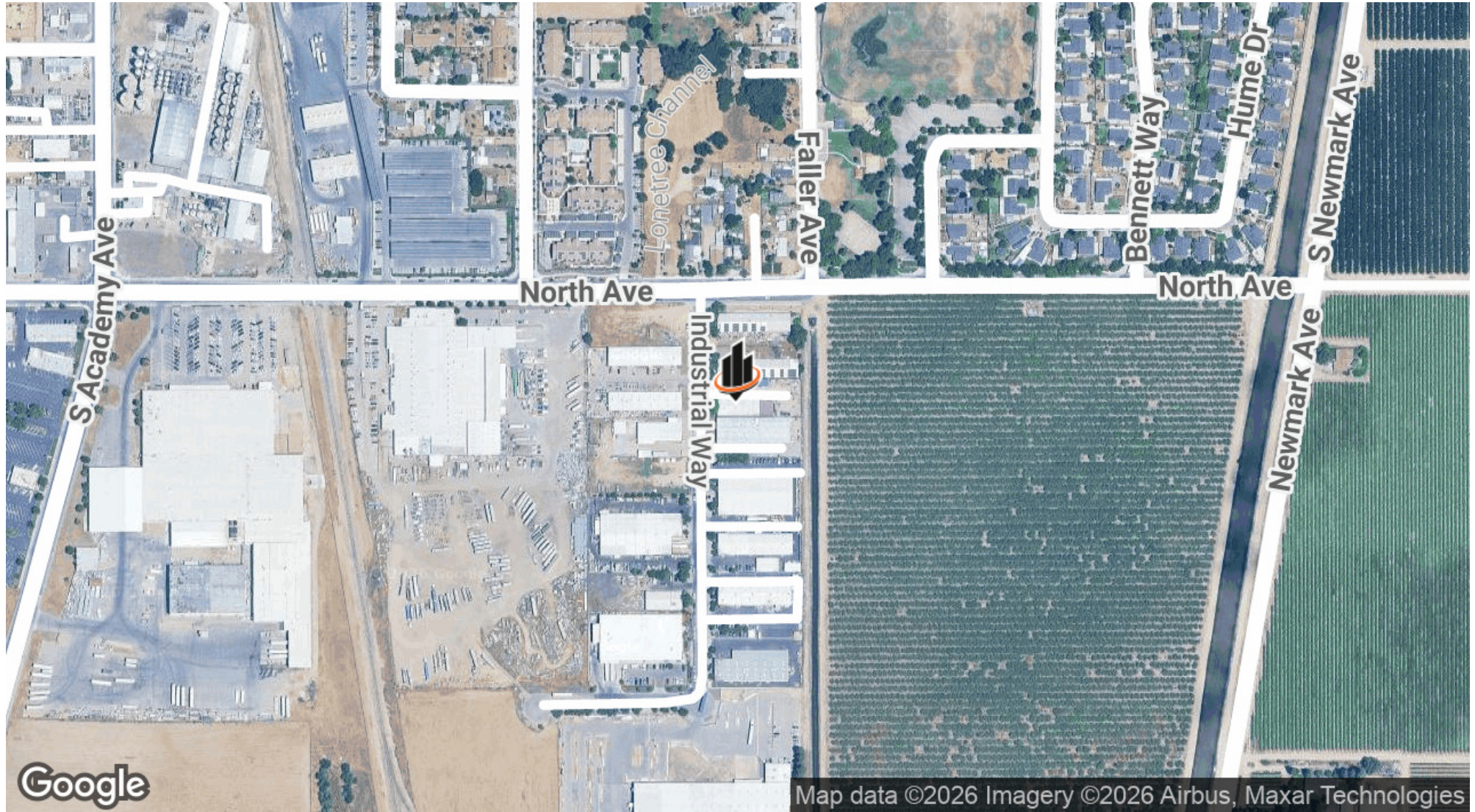


CAMERON GRAHAM
O: 559.400.0830
cameron.graham@svn.com
CalDRE #01970844

INDUSTRIAL WAY, SANGER | 1848 Industrial Way Sanger, CA 93657

SVN | CLOVIS COMMERCIAL 3

LOCATION MAP



CAMERON GRAHAM
O: 559.400.0830
cameron.graham@svn.com
CalDRE #01970844

INDUSTRIAL WAY, SANGER | 1848 Industrial Way Sanger, CA 93657

SVN | CLOVIS COMMERCIAL 4