

OFFICE SUITES AVAILABLE
22362 GILBERTO
RANCHO SANTA MARGARITA, CA 92688



PROPERTY FEATURES

- ±18,538 SF 2-Story, Elevator Served Office Building
- Corporate Headquarters Building with Formal Entry Lobby
- Entire Building Available or Divisible Into Flexible Suite Sizes
- Spectacular Panoramic Saddleback Mountain Views
- 4.1:1000 Parking Ratio
- Easy Access to the 241 FTC
- Close Proximity to Retail Amenities

AVAILABILITY

SUITE	SIZE	LEASE RATE
215	1,104	\$2.10 FSG
230	577	\$2.45 FSG
250	1,909	\$2.10 FSG

Mark Jerue
CalDRE 01073399
949.790.3121
mjerue@leeirvine.com

Craig Fitterer
CalDRE 01246929
949.790.3123
cfitterer@leeirvine.com

BJ Fell
CalDRE 01929179
949.790.3144
bfell@leeirvine.com

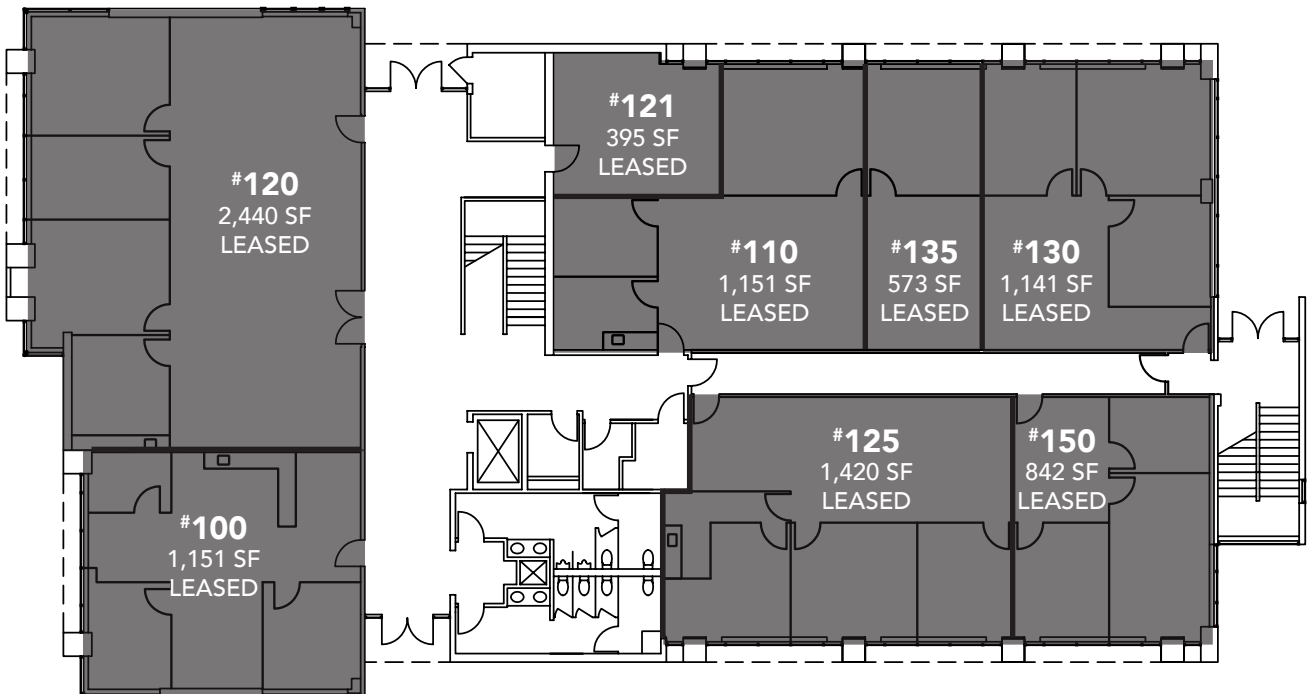
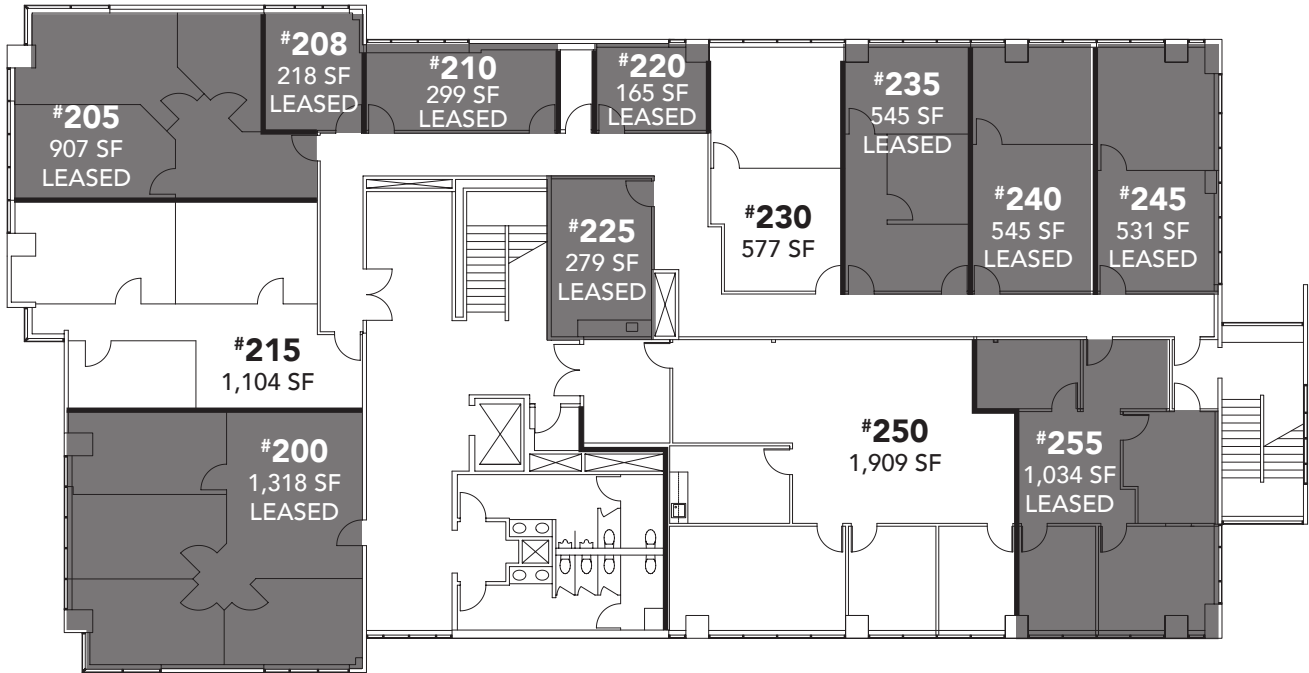
GianCarlo Spinosi
CalDRE 02065254
949.790.3109
gspinosi@leeirvine.com

All information furnished regarding property for sale, rental or financing is from sources deemed reliable, but no warranty or representation is made to the accuracy thereof and same is submitted to errors, omissions, change of price, rental or other conditions prior to sale, lease or financing or withdrawal without notice. No liability of any kind is to be imposed on the broker herein.

OFFICE SUITES AVAILABLE

22362 GILBERTO

RANCHO SANTA MARGARITA, CA 92688



Mark Jerue
CalDRE 01073399
949.790.3121
mjerue@leeirvine.com

Craig Fitterer
CalDRE 01246929
949.790.3123
cfitterer@leeirvine.com

BJ Fell
CalDRE 01929179
949.790.3144
bfell@leeirvine.com

GianCarlo Spinosi
CalDRE 02065254
949.790.3109
gspinosi@leeirvine.com

All information furnished regarding property for sale, rental or financing is from sources deemed reliable, but no warranty or representation is made to the accuracy thereof and same is submitted to errors, omissions, change of price, rental or other conditions prior to sale, lease or financing or withdrawal without notice. No liability of any kind is to be imposed on the broker herein.