

# 19847 CENTURY BLVD

Germantown, MD 20874

Medical Office For Lease

240 - 3,728 SF



Leasing Information:  
301.304.8300

**Paul "Rocky" Kern**    **Richard Coppola**  
301.304.8399            301.304.8405  
pkern@lpc.com        rcoppola@lpc.com

## Lincoln

Lincoln Property Company  
1101 Wootton Pkwy Suite 410  
Rockville, MD 20854

[www.lpc.com](http://www.lpc.com)

# 19847 CENTURY BLVD

Germantown, MD 20874

## Medical Office For Lease

240 - 3,728 SF



### Property Highlights

- Prime location for medical tenants, close to Holy Cross Hospital
- Located in the heart of Germantown Town Center
- Numerous nearby restaurants and amenities
- Free parking, high parking ratio (covered and surface)

### Availabilities

### SF

### Lease Rate

### Date Available

Suite 202

3,728 SF

Call For Pricing

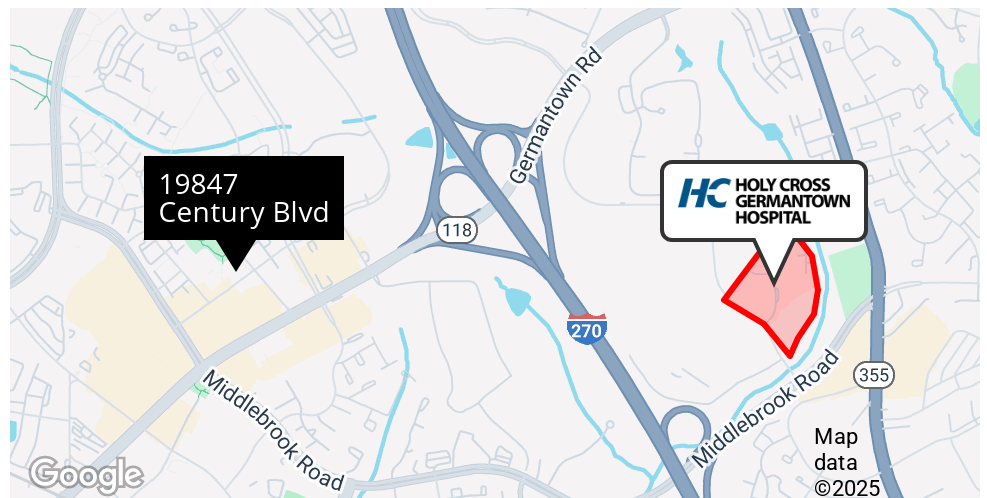
Immediately

Suite 202D

240 SF

\$750 / month FS

Immediately



**Paul "Rocky" Kern**

301.304.8399  
pkern@lpc.com

**Richard Coppola**

301.304.8405  
rcoppola@lpc.com

# Lincoln

# 19847 CENTURY BLVD

Germantown, MD 20874

Century Center Retail

240 - 3,728 SF



Google

Map data ©2025 Imagery ©2025 Airbus, Maxar Technologies

Paul "Rocky" Kern

301.304.8399  
pkern@lpc.com

Richard Coppola

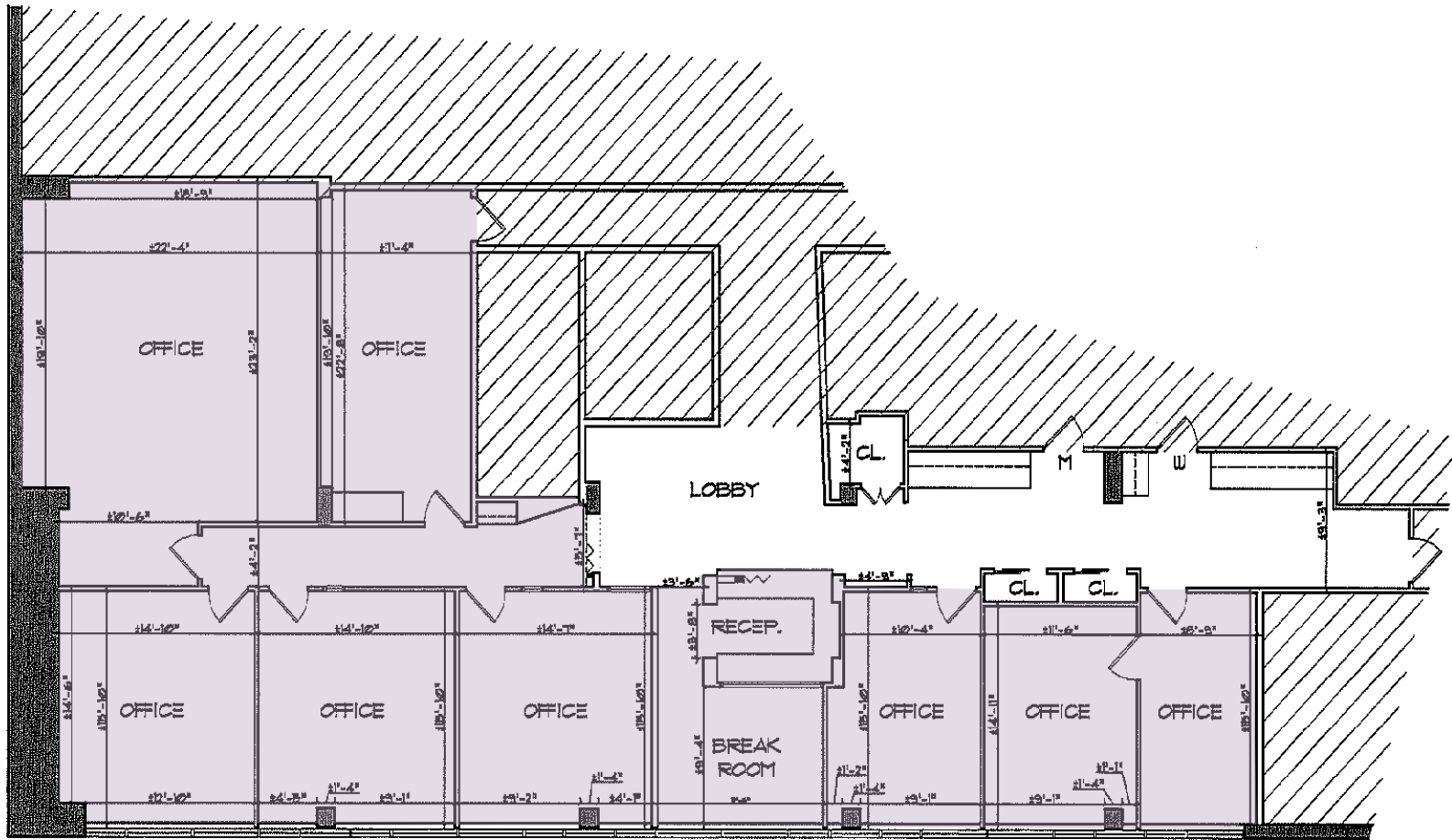
301.304.8405  
rcoppola@lpc.com

# Lincoln

# 19847 CENTURY BLVD

Germantown, MD 20874

Suite 202



| Suite       | Size     | Description            |
|-------------|----------|------------------------|
| ■ Suite 202 | 3,728 SF | Available immediately. |

Paul "Rocky" Kern Richard Coppola  
301.304.8399 301.304.8405  
pkern@lpc.com rcoppola@lpc.com

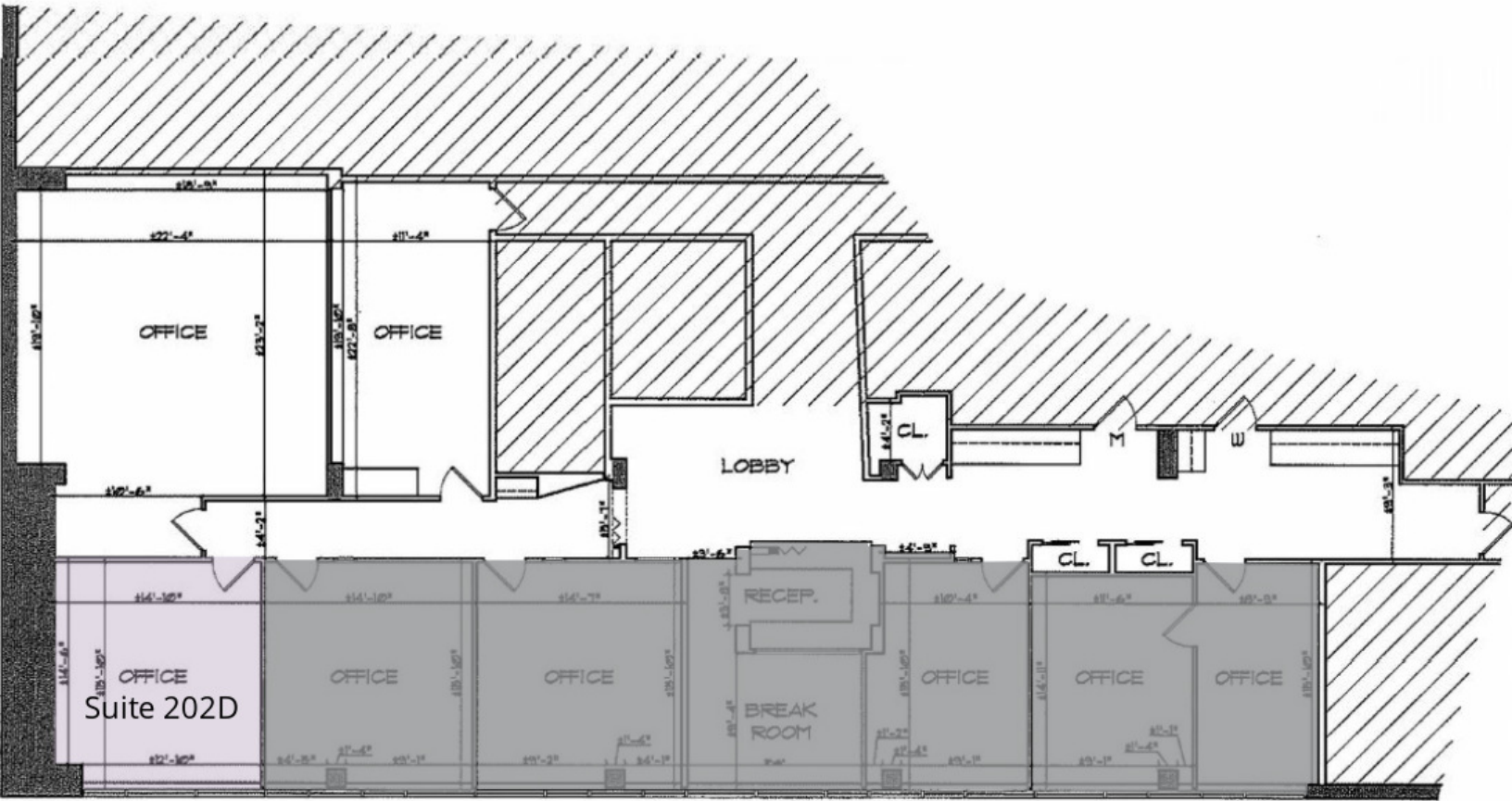
## Lincoln

# 19847 CENTURY BLVD

Germantown, MD 20874

Suite 202: Individual Offices

240 SF



| Suite        | Size   | Lease Rate       | Description            |
|--------------|--------|------------------|------------------------|
| ■ Suite 202D | 240 SF | \$750 / month FS | Available Immediately. |

**Paul "Rocky" Kern**    **Richard Coppola**  
301.304.8399            301.304.8405  
pkern@lpc.com        rcoppola@lpc.com

## Lincoln



# 19847 CENTURY BLVD

Germantown, MD 20874

Leasing Information:  
301.304.8300

**Paul "Rocky" Kern**  
301.304.8399  
pkern@lpc.com

**Richard Coppola**  
301.304.8405  
rcoppola@lpc.com

## Lincoln

Lincoln Property Company  
1101 Wootton Pkwy Suite 410  
Rockville, MD 20854

[www.lpc.com](http://www.lpc.com)