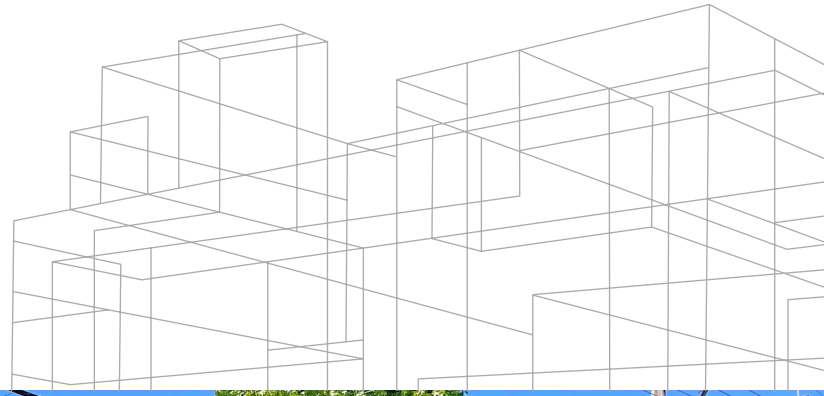


# OFFICE SPACE FOR LEASE

1260-1290 B ST, HAYWARD, CA



*Professional office building  
conveniently located close  
to downtown Hayward*

**6,708 SF**  
TOTAL AVAILABLE

**696 - 1,931 SF**  
RANGE AVAILABLE PER SUITE

On-site management

Flexible lease term

Ample covered and surface parking

Short walk to BART station

Asking Rate: \$2.35 PSF/month, Full Service

Call agent to tour

**JOHN MCLELLAN**  
415.418.9880  
john.mclellan@kidder.com  
LIC N° 01869489

**DREW RAMIREZ**  
650.430.1433  
drew.ramirez@kidder.com  
LIC N° 02209477

**BRETT WEBER**  
650.771.3000  
brett.weber@kidder.com  
LIC N° 00901454

**STEVE DIVNEY**  
650.400.8065  
steve.divney@kidder.com  
LIC N° 01216239

**KIDDER.COM**

This information supplied herein is from sources we deem reliable. It is provided without any representation, warranty, or guarantee, expressed or implied as to its accuracy. Prospective Buyer or Tenant should conduct an independent investigation and verification of all matters deemed to be material, including, but not limited to, statements of income and expenses. Consult your attorney, accountant, or other professional advisor.



# 1260 B ST - SUITE 300

*±696 SF*

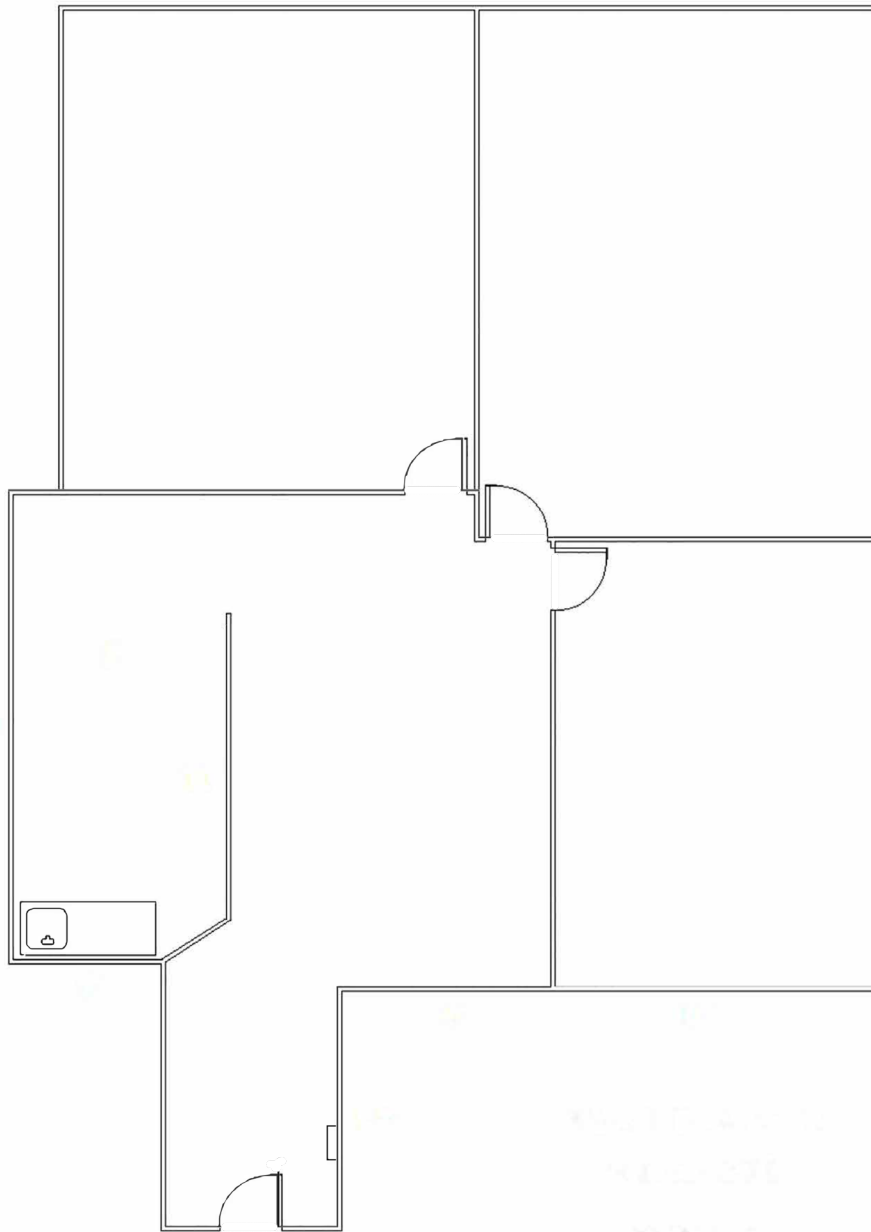
AVAILABLE

*\$2.35 PSF*

LEASE RATE (SF/YR)

*5/31/26*

EXPECTED MOVE OUT



FLOOR PLAN NOT TO SCALE

[KIDDER.COM](http://KIDDER.COM)

This information supplied herein is from sources we deem reliable. It is provided without any representation, warranty, or guarantee, expressed or implied as to its accuracy. Prospective Buyer or Tenant should conduct an independent investigation and verification of all matters deemed to be material, including, but not limited to, statements of income and expenses. Consult your attorney, accountant, or other professional advisor.



# 1260 B ST - SUITE 375

***±1,931 SF***

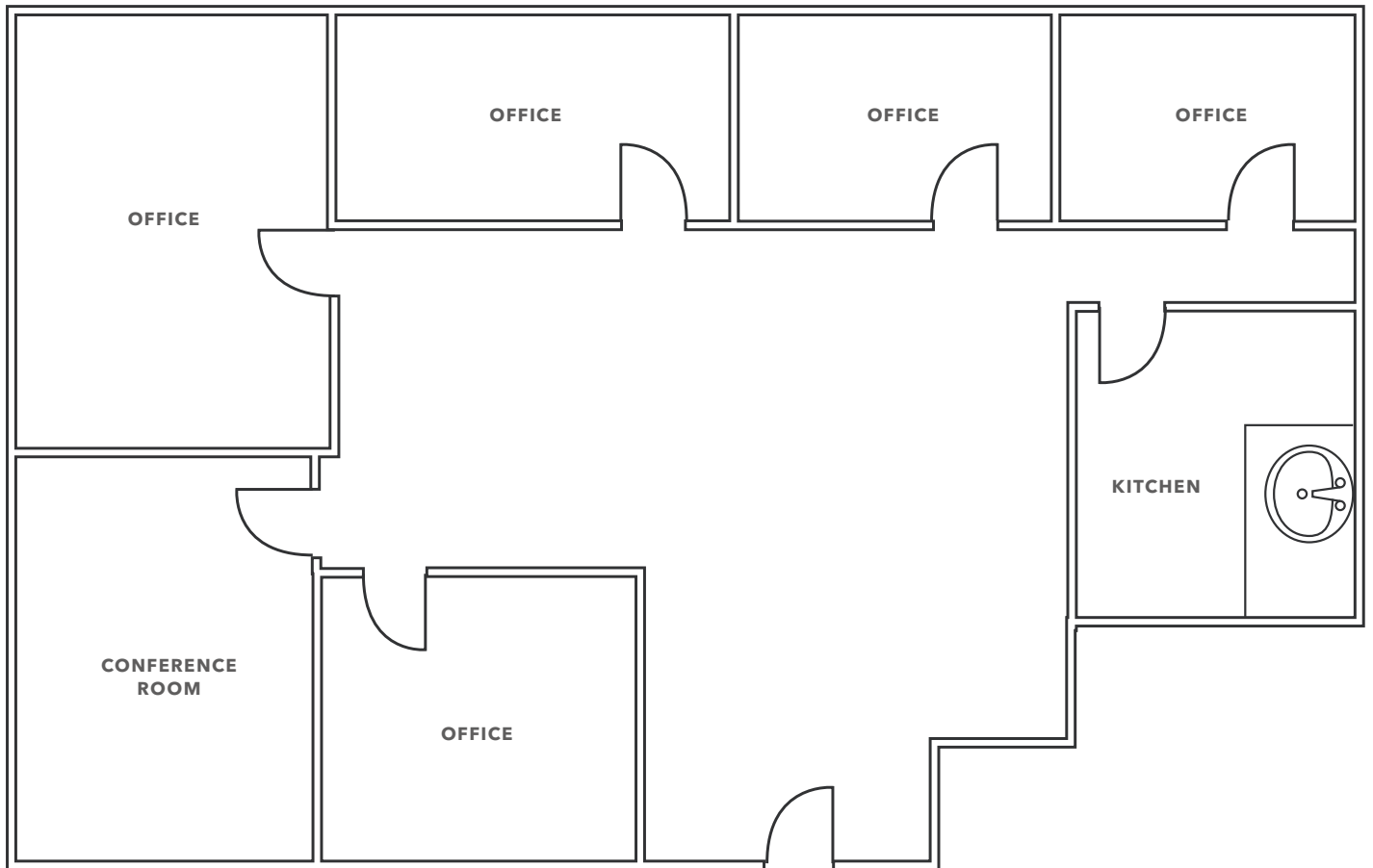
AVAILABLE

***\$2.35 PSF***

LEASE RATE (SF/YR)

***NOW***

AVAILABLE



FLOOR PLAN NOT TO SCALE

**KIDDER.COM**

This information supplied herein is from sources we deem reliable. It is provided without any representation, warranty, or guarantee, expressed or implied as to its accuracy. Prospective Buyer or Tenant should conduct an independent investigation and verification of all matters deemed to be material, including, but not limited to, statements of income and expenses. Consult your attorney, accountant, or other professional advisor.



# 1290 B ST - SUITE 114

*±1,000 SF*

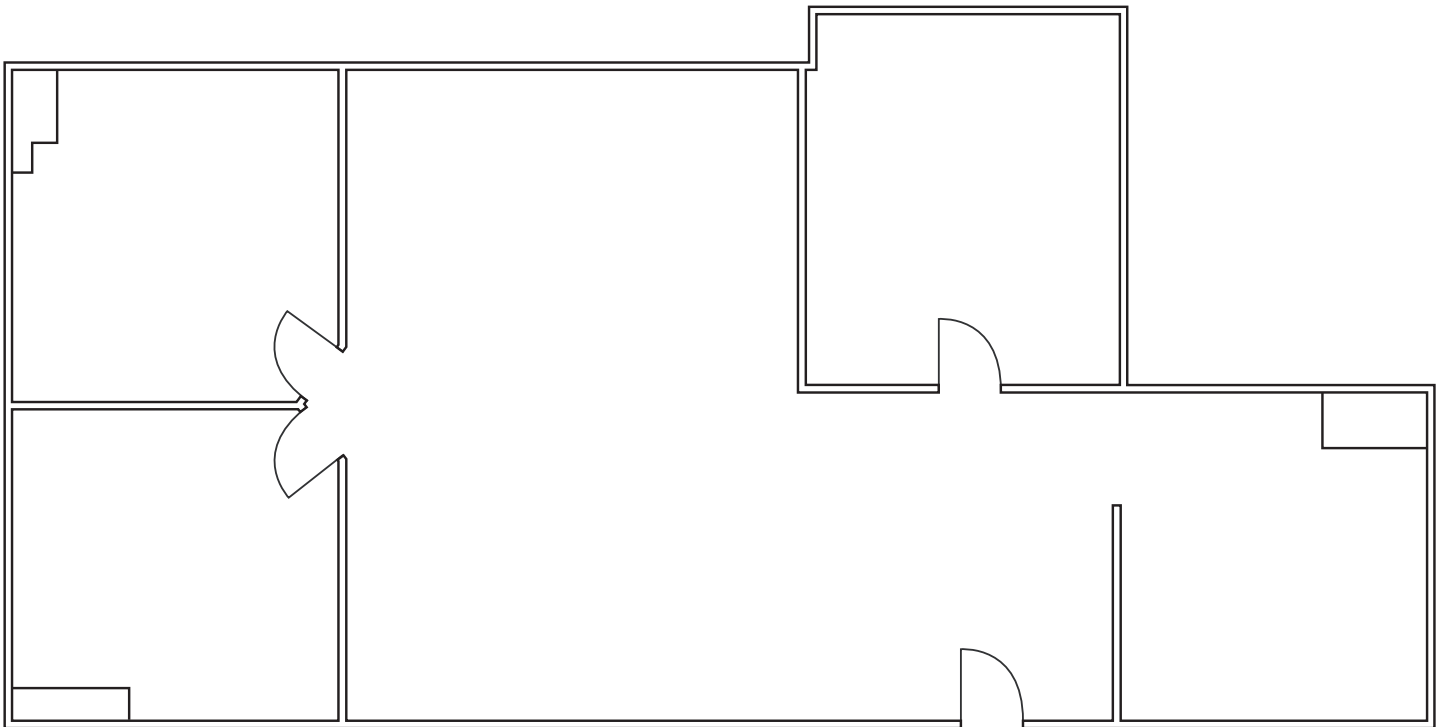
AVAILABLE

*\$2.35 PSF*

LEASE RATE (SF/YR)

*NOW*

AVAILABLE



FLOOR PLAN NOT TO SCALE

[KIDDER.COM](http://KIDDER.COM)

This information supplied herein is from sources we deem reliable. It is provided without any representation, warranty, or guarantee, expressed or implied as to its accuracy. Prospective Buyer or Tenant should conduct an independent investigation and verification of all matters deemed to be material, including, but not limited to, statements of income and expenses. Consult your attorney, accountant, or other professional advisor.



# 1290 B ST - SUITE 307

*±1,352 SF*

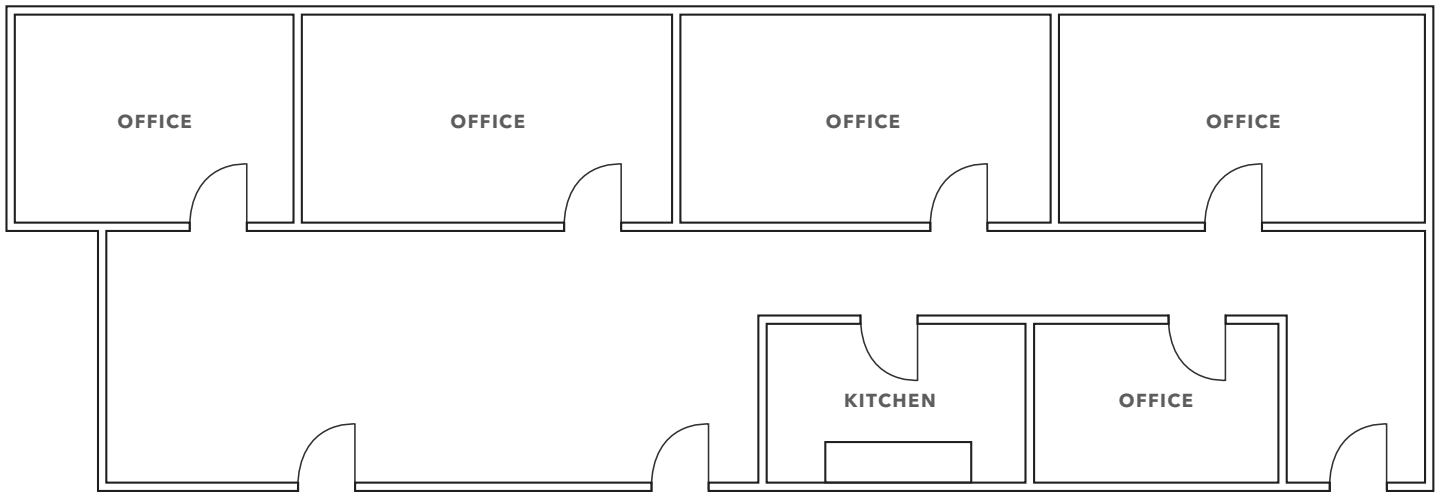
AVAILABLE

*\$2.35 PSF*

LEASE RATE (SF/YR)

*04/01/26*

AVAILABLE



FLOOR PLAN NOT TO SCALE

# 1290 B ST - SUITE 309

*±954 SF*

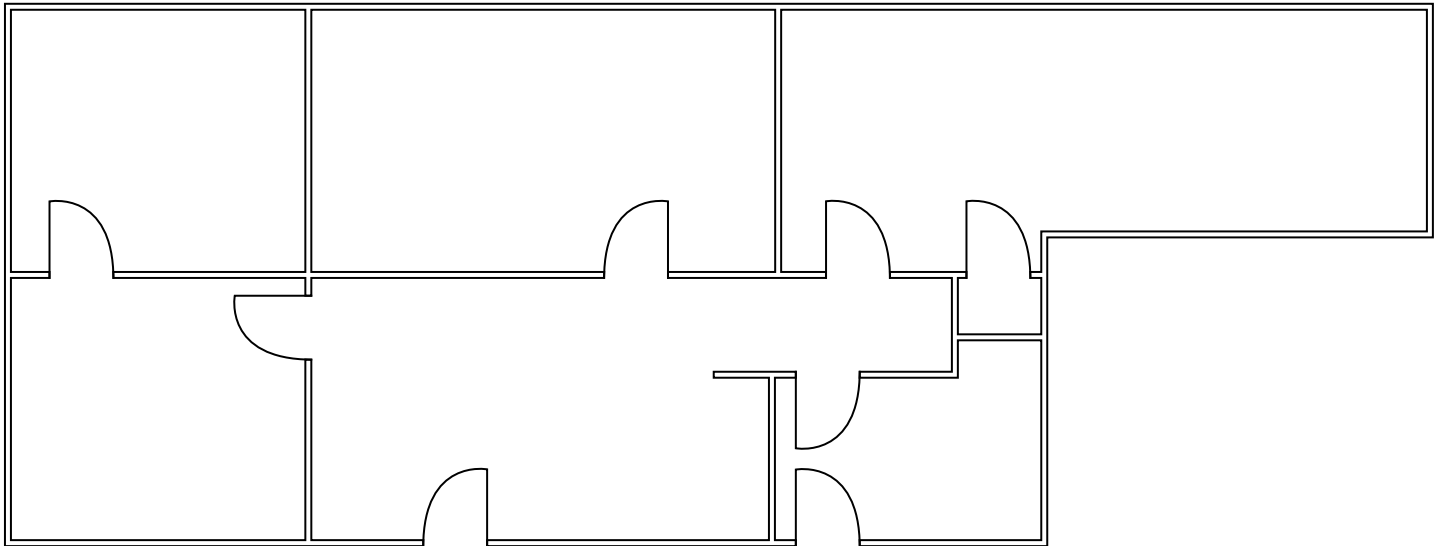
AVAILABLE

*\$2.35 PSF*

LEASE RATE (SF/YR)

*04/01/26*

AVAILABLE



FLOOR PLAN NOT TO SCALE

[KIDDER.COM](http://KIDDER.COM)

This information supplied herein is from sources we deem reliable. It is provided without any representation, warranty, or guarantee, expressed or implied as to its accuracy. Prospective Buyer or Tenant should conduct an independent investigation and verification of all matters deemed to be material, including, but not limited to, statements of income and expenses. Consult your attorney, accountant, or other professional advisor.

# 1290 B ST - SUITE 316

*±775 SF*

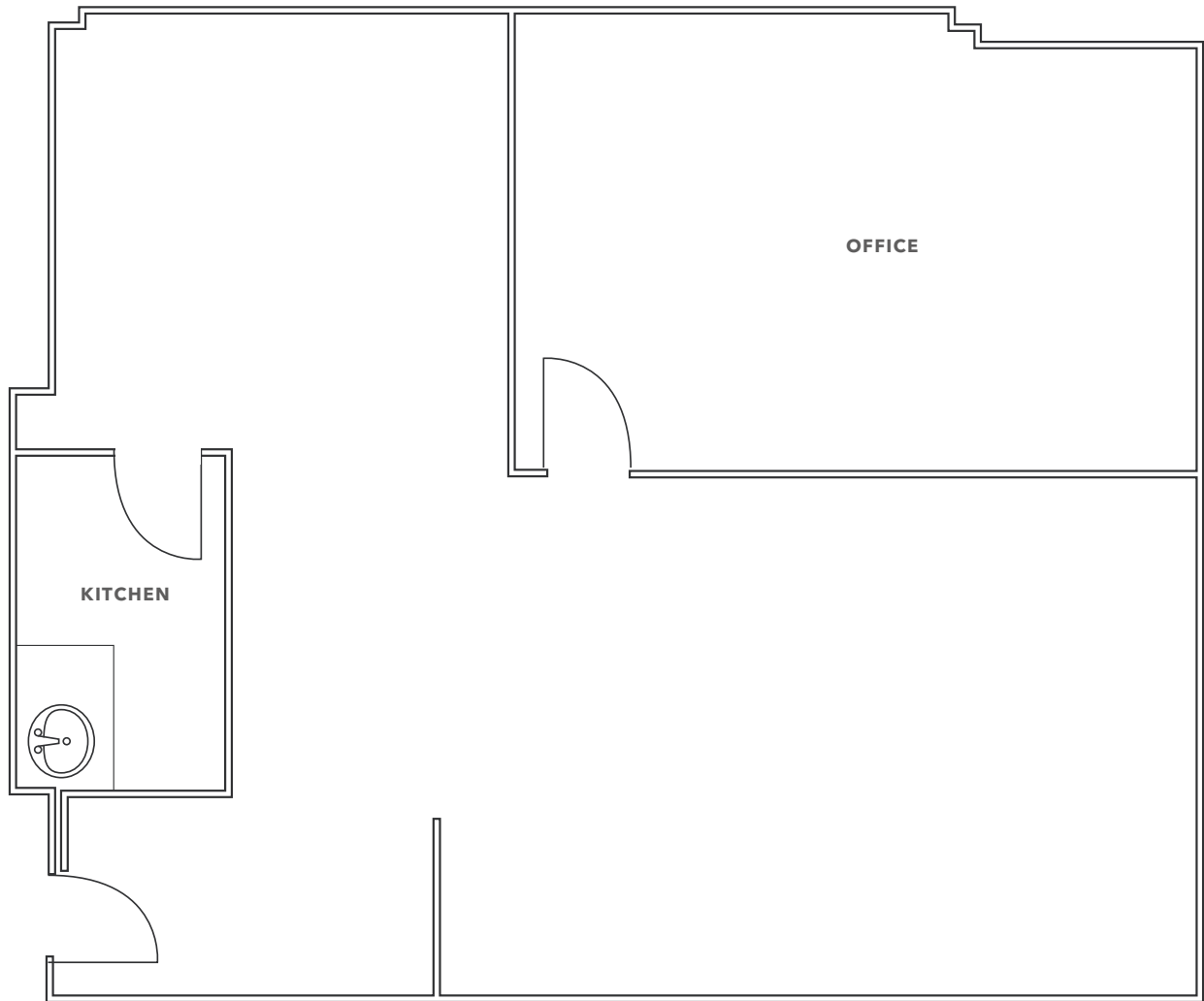
AVAILABLE

*\$2.35 PSF*

LEASE RATE (SF/YR)

*NOW*

AVAILABLE



FLOOR PLAN NOT TO SCALE

[KIDDER.COM](http://KIDDER.COM)

This information supplied herein is from sources we deem reliable. It is provided without any representation, warranty, or guarantee, expressed or implied as to its accuracy. Prospective Buyer or Tenant should conduct an independent investigation and verification of all matters deemed to be material, including, but not limited to, statements of income and expenses. Consult your attorney, accountant, or other professional advisor.





KIDDER.COM

This information supplied herein is from sources we deem reliable. It is provided without any representation, warranty, or guarantee, expressed or implied as to its accuracy. Prospective Buyer or Tenant should conduct an independent investigation and verification of all matters deemed to be material, including, but not limited to, statements of income and expenses. Consult your attorney, accountant, or other professional advisor.

**km** Kidder Mathews