

AVAILABLE FOR LEASE | ±3,122 SF INDUSTRIAL SUITE | KEARNY MESA



5038 RUFFNER STREET | SUITE B | SAN DIEGO, CA 92111

CHRIS DUNCAN, SIOR
Senior Vice President | Lic. #01324067
858.458.3307 | cduncan@voitco.com

Voit
REAL ESTATE SERVICES

5038 RUFFNER STREET | SUITE B | SAN DIEGO, CA 92111

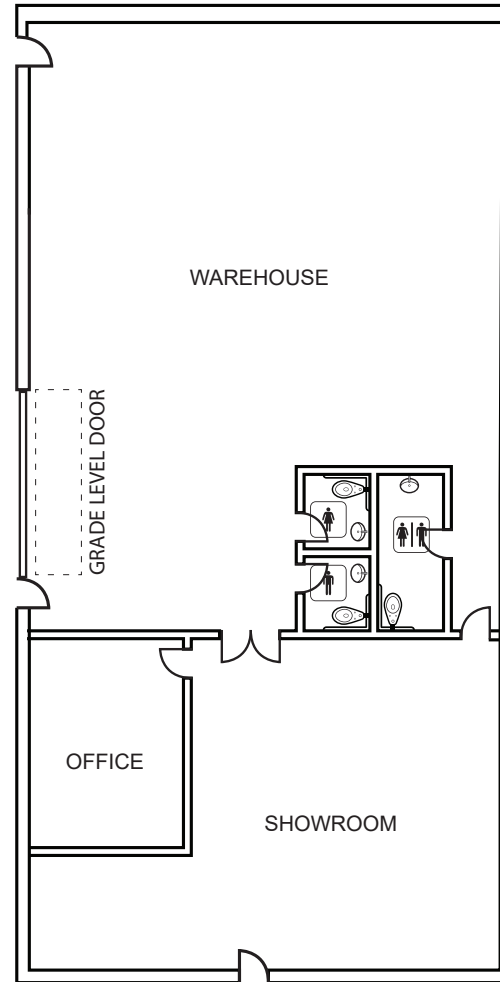
PROPERTY FEATURES

- ±3,122 SF Industrial Suite Available
- 25% Office with Balance Warehouse
- Grade Level Loading
- 13' - 15' Clear Height
- Frontage on Ruffner St. with Good Visibility
- Right Off Clairemont Mesa Blvd.
- Walking Distance to Retail Amenities
- Gas Service Available
- Drive Around Truck Access
- Minutes to I-805, and Highways 52 & 163
- Available Immediately

LEASE RATE: \$2.05 PSF/Mo. MG



FLOOR PLAN



CHRIS DUNCAN, SIOR

Senior Vice President | Lic. #01324067

858.458.3307 | cduncan@voitco.com

Voit

REAL ESTATE SERVICES