

Truck Terminal | For Lease | Westside Submarket

900 N Canal St
Jacksonville, FL 32209



Building SF: 40,936 SF Available

Asking Rate: Please Inquire

For More Information, Please Contact:

Kyle Fisher

First Vice President
+1 864 540 5926
kyle.fisher@cbre.com

Kyle Murphy

Associate
+1 845 416 3890
kyle.murphy@cbre.com

Alliah Hardee

Associate
+1 904 814 9961
alliah.hardee@cbre.com

9606CAPITAL

CBRE

Building Specifications

Load Configuration Cross Dock

Space Available 40,936 SF

Warehouse Space 34,636 SF

Office Space 6,300 SF

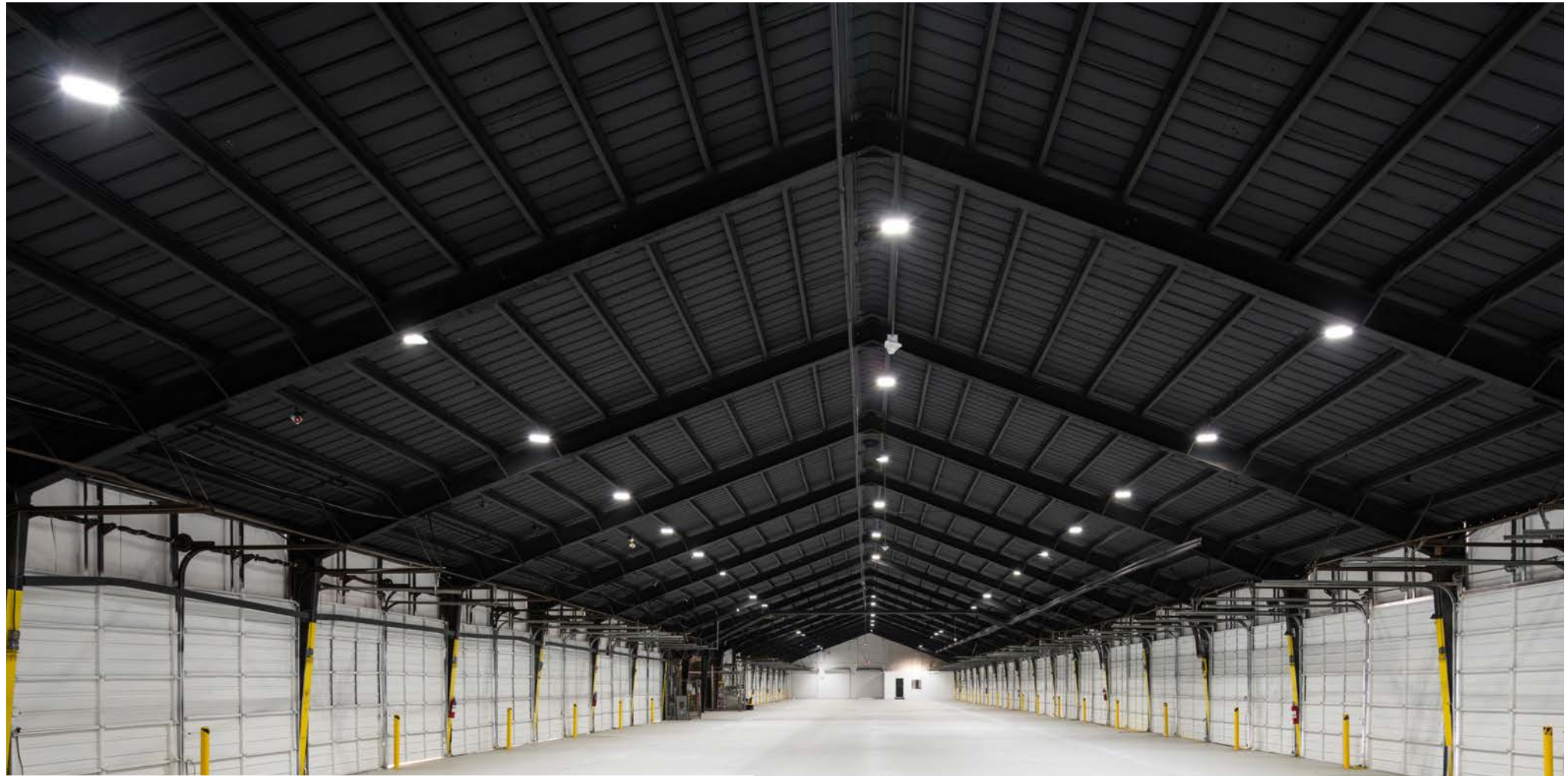
Dock Doors 75 Dock High (8' x 10')

Ramp 1

Zoning Light Industrial (IL)

Total Land Area 8.07 acres

Ceiling Height 14'



Interior Office



Interior Warehouse



Industrial space with fully paved drive-in bays, stabilized land, fencing and security

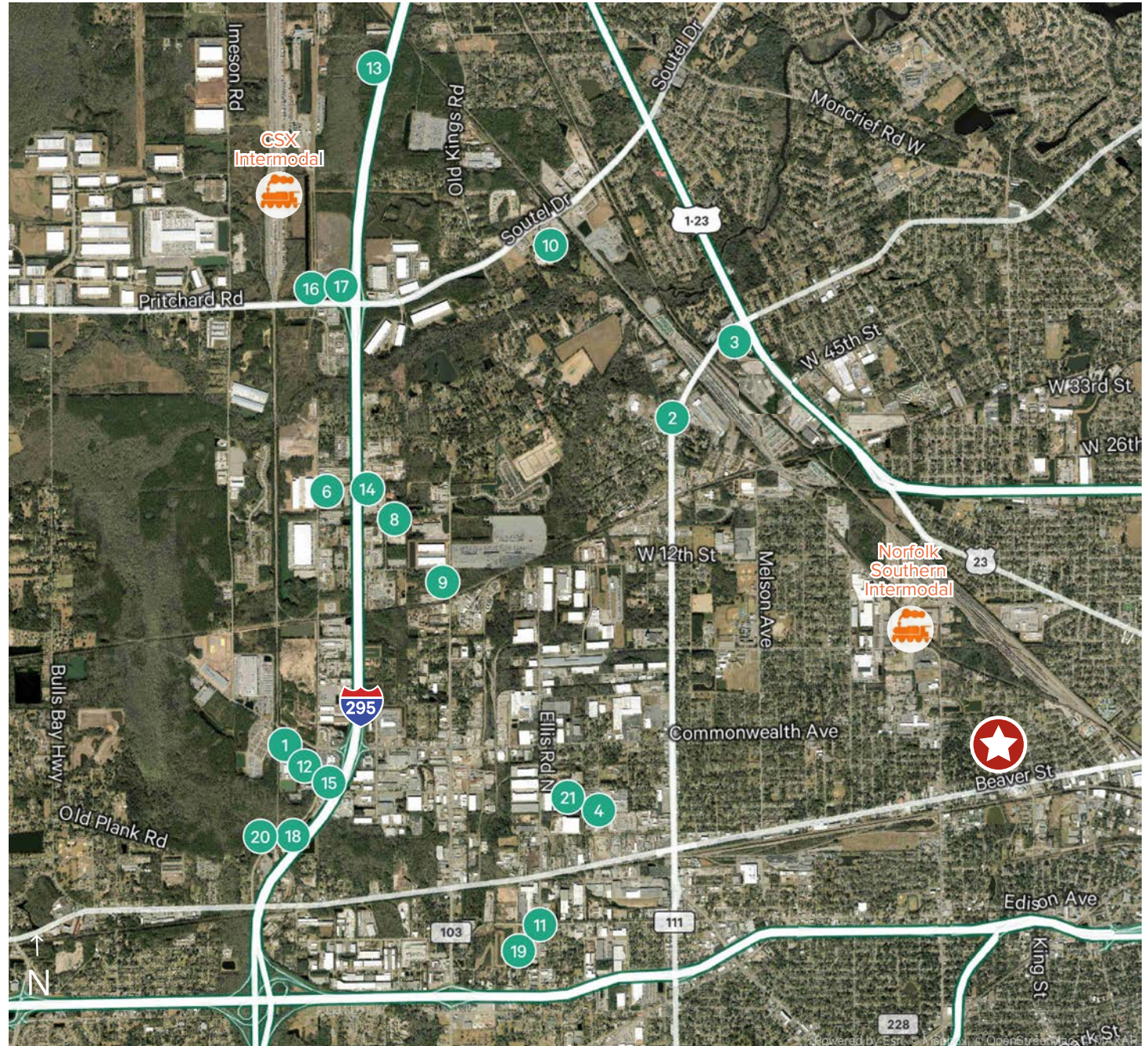
- Renovated in 2024 and move in ready
 - Property is fully paved with 300 parking spaces
-



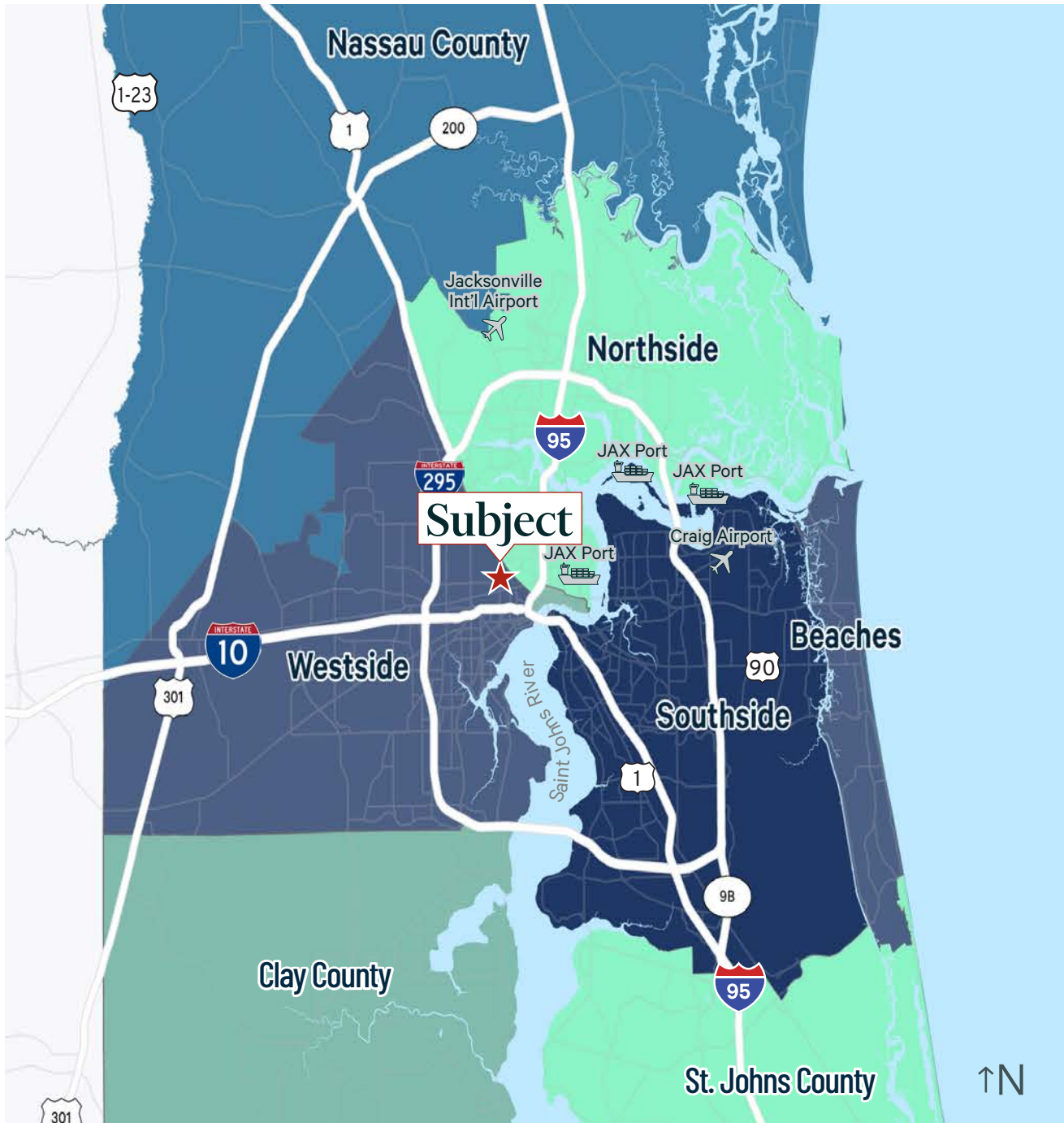
Trade Aerial

Nearby Tenants

- | | |
|--|--|
| 1 | Averitt Express |
| 2 | Southeastern Freight Lines |
| 3 | Centurion Auto Logistics |
| 4 | Old Dominion Freight Line |
| 5 | Trailer Leasing Company |
| 6 | Thermo King Of North Florida |
| 7 | FedEx |
| 8 | Central Freight Lines |
| 9 | Arrowpac |
| 10 | Mulch Mfg |
| 11 | SSI Petroleum |
| 12 | Ryder |
| 13 | Central Transport |
| 14 | North Atlantic Ocean and Air Consolidators |
| 15 | Sunbelt Rentals |
| 16 | Vineland Construction Company |
| 17 | Salem Leasing Corporation |
| 18 | US Foods |
| 19 | XPO Logistics |
| 20 | Penn Tank Lines |
| 21 | Estes Express Lines |
|  | CSX Intermodal |
|  | Norfolk Southern Intermodal |



Points of Interest | Prime Connectivity



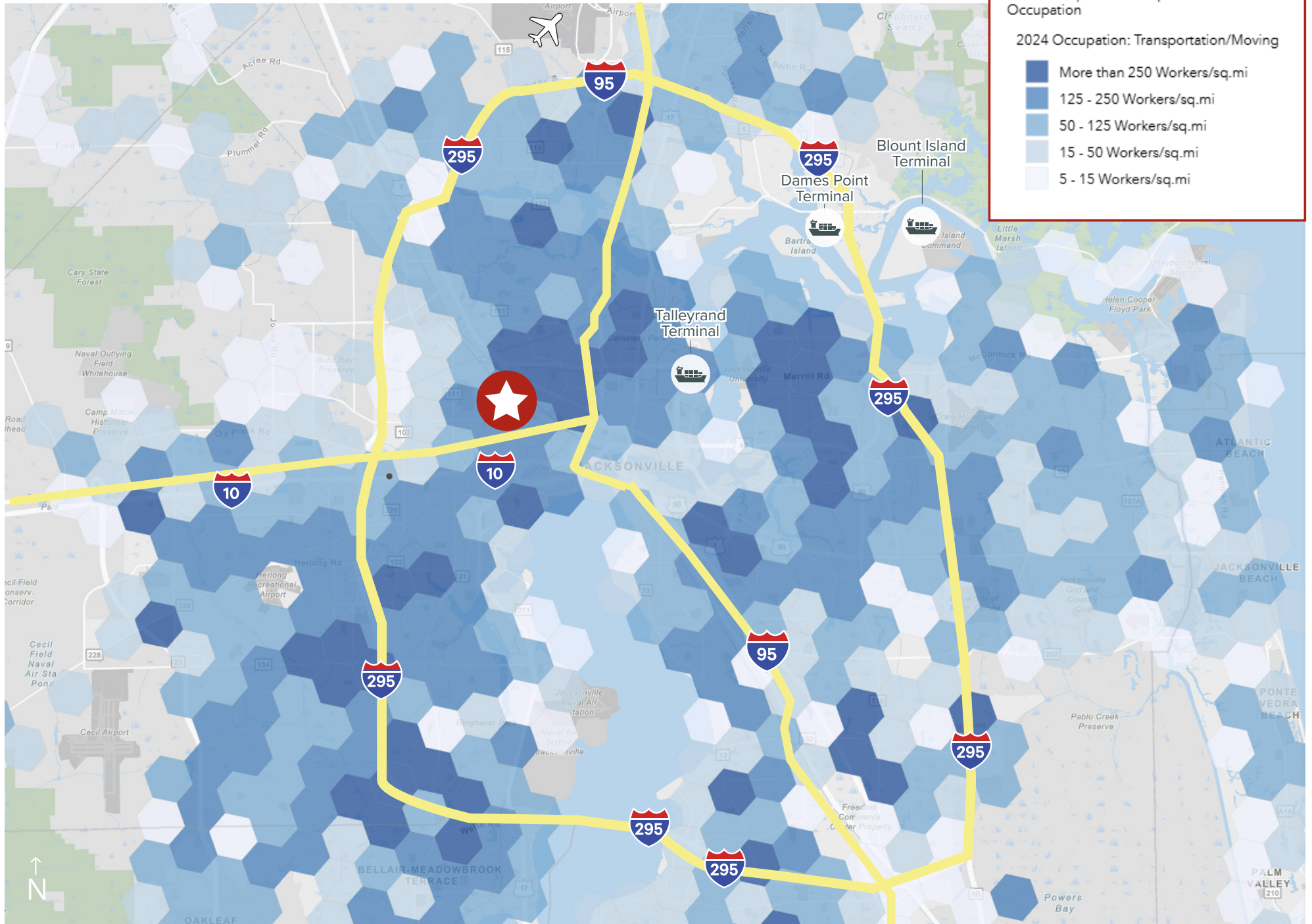
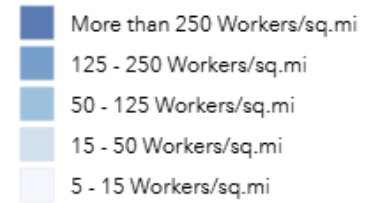
Points of Interest	Distance
Interstate 95	2.3 miles
US-10	2.3 miles
US-1	3.8 miles
Interstate 295	6.6 miles
Norfolk Southern Intermodal Facility	6.5 miles
CSX Intermodal Facility	7.8 miles
FEC Intermodal Facility	16.1 miles
Jacksonville Int'l Airport	15.8 miles
JAXPORT Talleyrand	6.4 miles
JAXPORT Dames Point	14.3 miles
JAXPORT Blount Island	16 miles
Port of Savannah	142 miles
Port of Tampa	197 miles
Port of Charleston	241 miles

Transportation/Warehousing Workforce Density

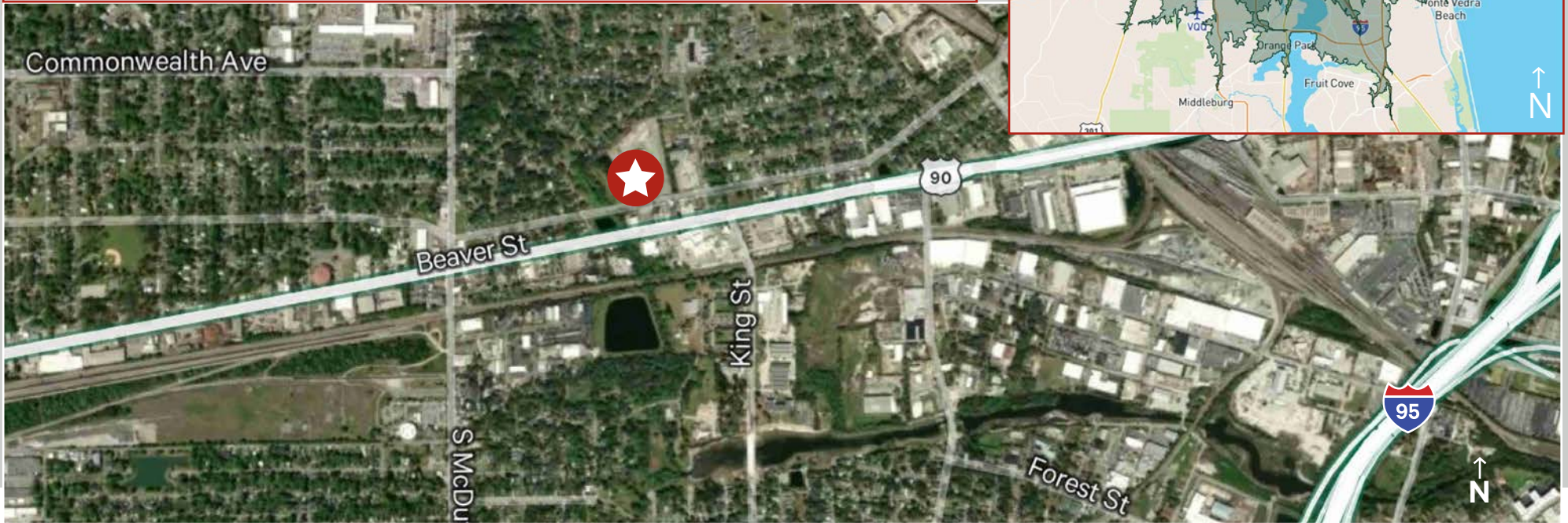
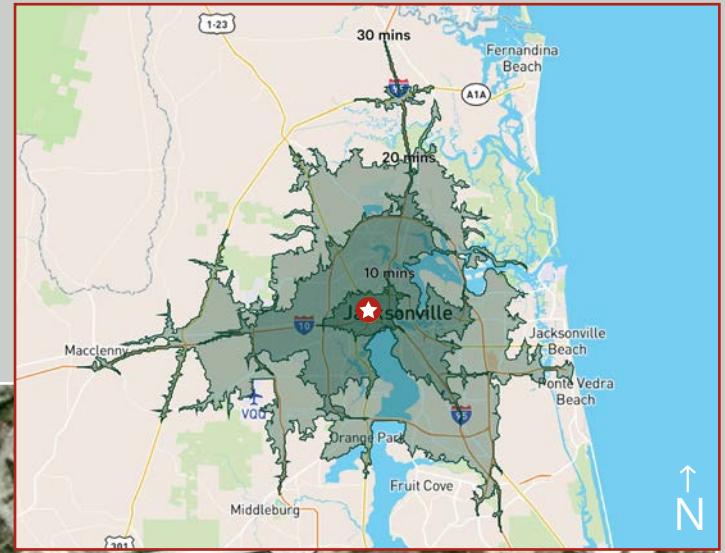
2024 Transportation/Warehouse Labor

Workers/sq. mi. in Transportation/Warehouse Occupation

2024 Occupation: Transportation/Moving



Key Metrics (Drive Time)	10 minutes	20 minutes	30 minutes
Population	44,201	365,548	970,359
Daytime Population	92,558	488,778	1,065,903
Labor Force (Transportation, Production, Material Moving)	20,872	178,135	502,332
Bachelor's Degree or Higher	4,956	42,101	153,946
Businesses	2,859	20,765	41,391
Avg Household Income	\$61,427	\$78,697	\$94,817



For More Information, Please Contact:

Kyle Fisher

First Vice President
+1 864 540 5926
kyle.fisher@cbre.com

Kyle Murphy

Associate
+1 845 416 3890
kyle.murphy@cbre.com

Alliah Hardee

Associate
+1 904 814 9961
alliah.hardee@cbre.com

© 2026 CBRE, Inc. All rights reserved. This information has been obtained from sources believed reliable, but has not been verified for accuracy or completeness. You should conduct a careful, independent investigation of the property and verify all information. Any reliance on this information is solely at your own risk. CBRE and the CBRE logo are service marks of CBRE, Inc. All other marks displayed on this document are the property of their respective owners, and the use of such logos does not imply any affiliation with or endorsement of CBRE. Photos herein are the property of their respective owners. Use of these images without the express written consent of the owner is prohibited.